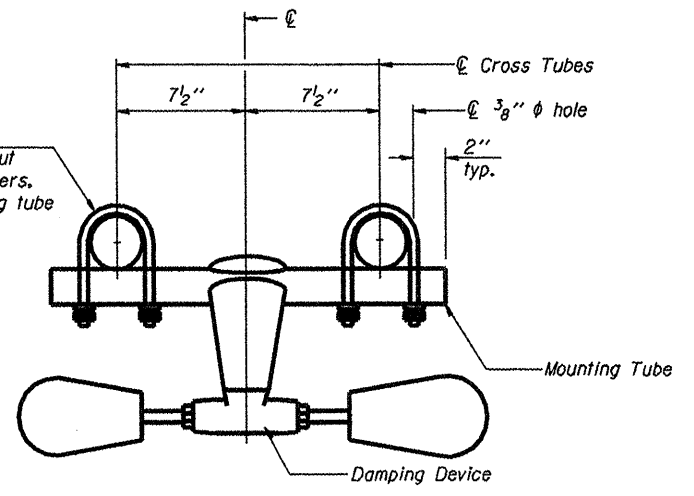
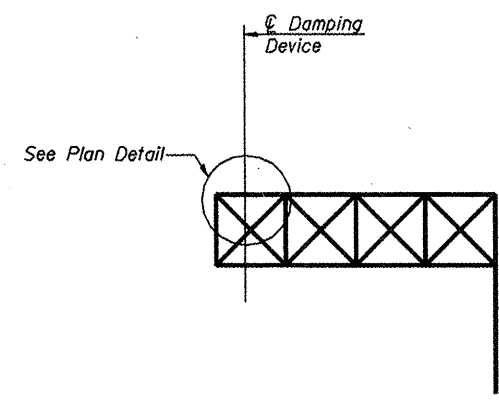


**PLAN DETAIL**



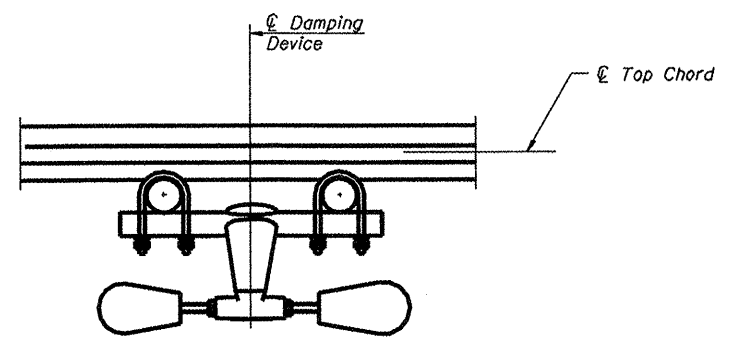
**TRUSS DAMPING DEVICE CONNECTION DETAIL**



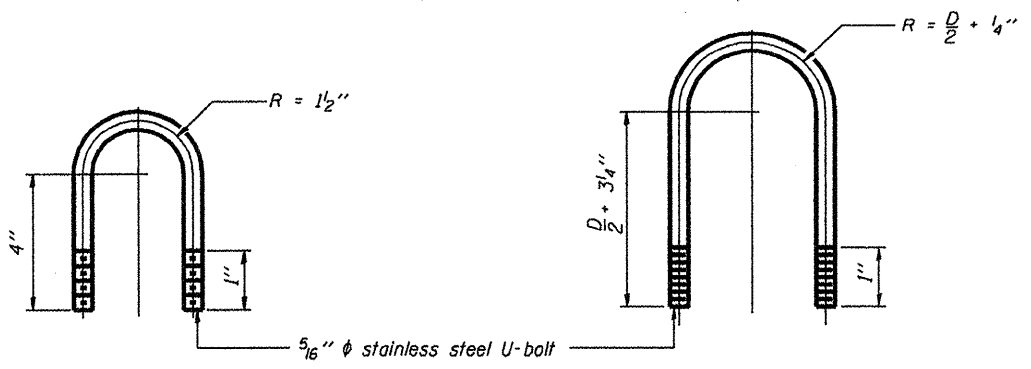
**ELEVATION**  
Aluminum Cantilever Sign Structure

**GENERAL NOTES**

- Damper: One damper per truss. (31 lbs. Stockbridge-Type Aluminum-29" minimum between ends of weights)
- Materials: Aluminum tubes shall be ASTM B221 alloy 6061 temper T6



**SECTION A-A**



**DAMPING DEVICE MOUNTING TUBE U-BOLT DETAIL**  
(Typical)

**TOP CHORD TO CROSS TUBE U-BOLT DETAIL**  
(Typical)

OSC-A-D

1-20-11

FILE NAME =	USER NAME = linkd	DESIGNED -	REVISED -
ONBR\SIGN TRUSS\CADD Plans\2011-2 cont\act\PLANeng.dgn		DRAWN -	REVISED -
PLOT SCALE = 100.0000 1/ IN.		CHECKED -	REVISED -
PLOT DATE = Wed Apr 06 15:31:47 2011		DATE -	REVISED -

STATE OF ILLINOIS  
DEPARTMENT OF TRANSPORTATION

SCALE: _____		SHEET NO. ____ OF ____ SHEETS		STA. _____ TO STA. _____	
--------------	--	-------------------------------	--	--------------------------	--

F.A. RTE.	SECTION	COUNTY	TOTAL SHEETS	SHEET NO.
var 0-2 OVD SIN STR REPL 12-03	VARIOUS		28	18
CONTRACT NO. 46176			ILLINOIS FED. AID PROJECT	