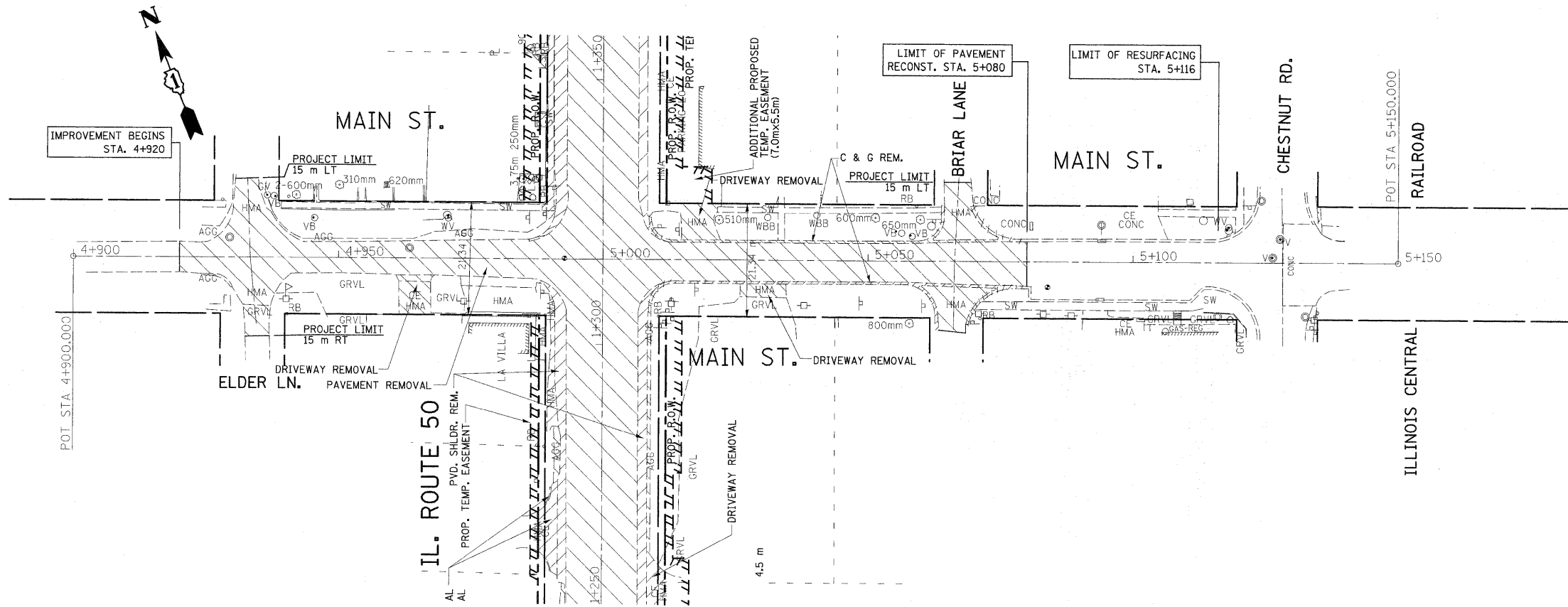
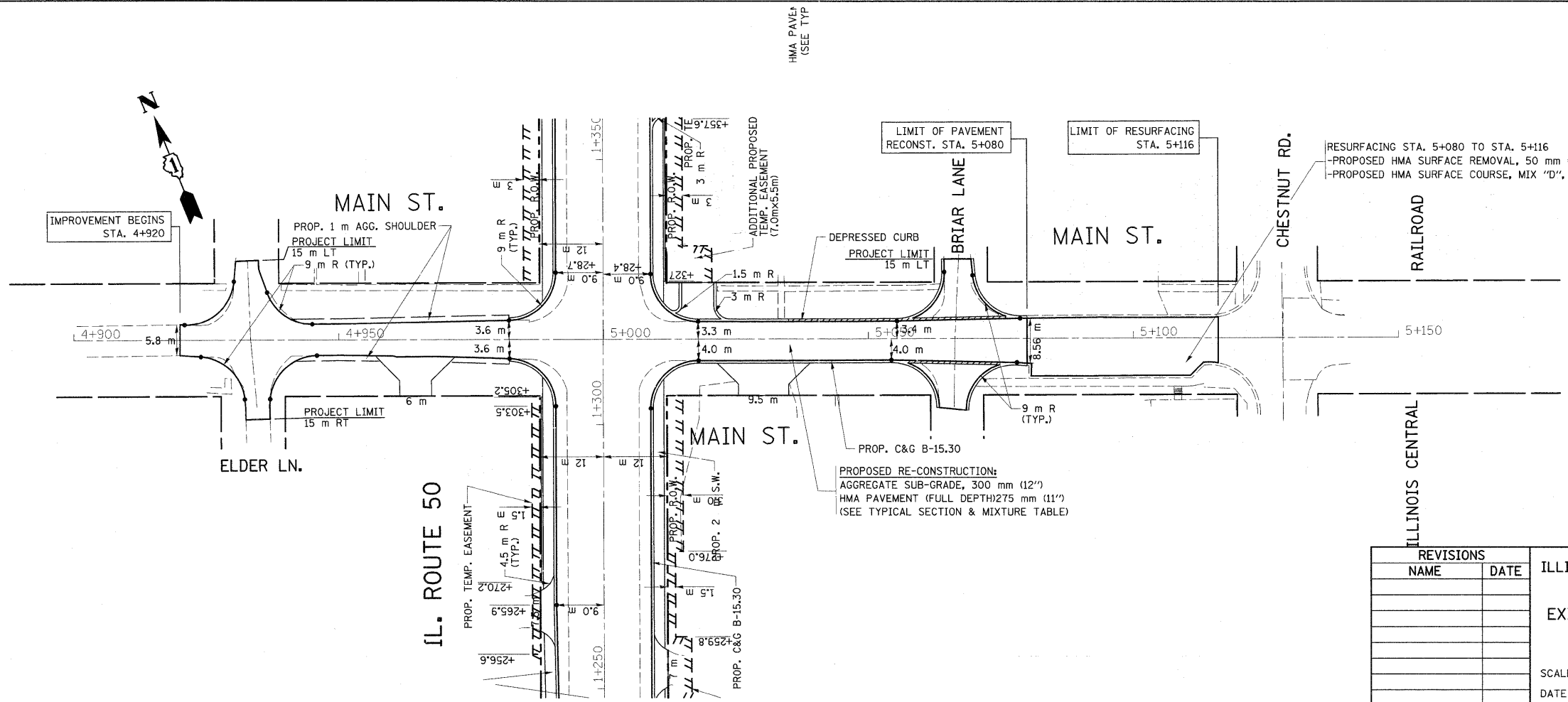


| F.A.P. RTE. | SECTION | COUNTY | TOTAL SHEETS | SHEET NO. |
|---------------------|---------|---------------------------|--------------|-----------|
| 840 | 143N | WILL | 121 | 36 |
| STA. 4+900 | | TO STA. 5+150 | | |
| FED. ROAD DIST. NO. | | ILLINOIS FED. AID PROJECT | | |



EXISTING



PROPOSED

RESURFACING STA. 5+080 TO STA. 5+116
 -PROPOSED HMA SURFACE REMOVAL, 50 mm (2")
 -PROPOSED HMA SURFACE COURSE, MIX "D", N70, 50 mm (2")

| REVISIONS | |
|-----------|------|
| NAME | DATE |
| | |
| | |
| | |
| | |
| | |

ILLINOIS DEPARTMENT OF TRANSPORTATION
 EXISTING & PROPOSED ROADWAY PLAN
 MAIN ST.

SCALE 1:500
 DATE 5/19/2011
 DRAWN BY
 CHECKED BY
 Rev.

5/19/2011
 c:\pw\work\p\widof\bauser\1\0198247\PI02397-str-plan.dgn
 baw:csl