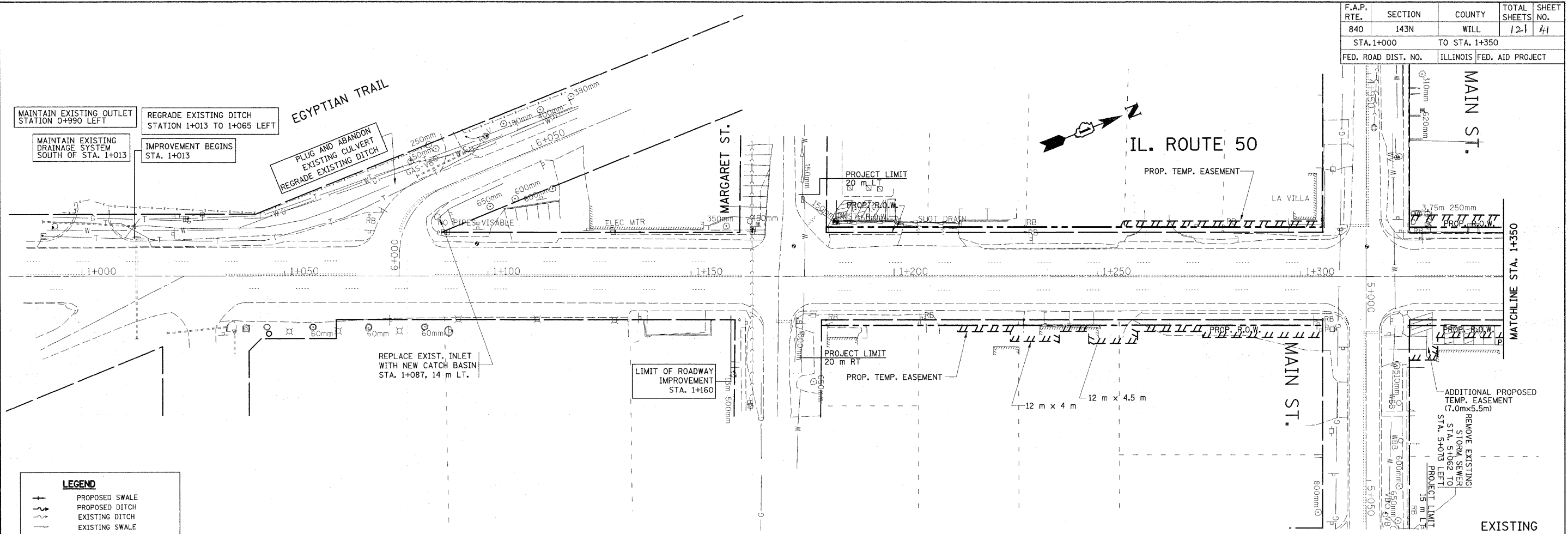
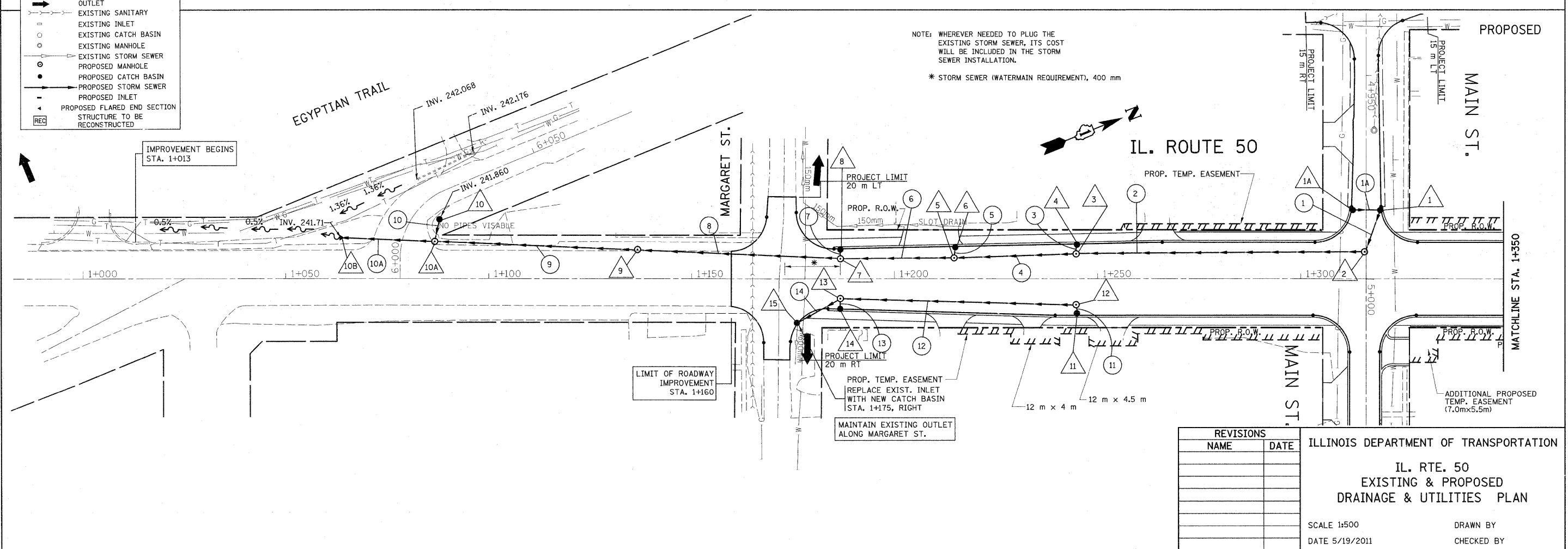


F.A.P. RTE.	SECTION	COUNTY	TOTAL SHEETS	SHEET NO.
840	143N	WILL	121	41
STA. 1+000		TO STA. 1+350		
FED. ROAD DIST. NO.	ILLINOIS	FED. AID PROJECT		



LEGEND

- PROPOSED SWALE
- - - - - PROPOSED DITCH
- - - - - EXISTING DITCH
- - - - - EXISTING SWALE
- OUTLET
- - - - - EXISTING SANITARY
- - - - - EXISTING INLET
- EXISTING CATCH BASIN
- EXISTING MANHOLE
- EXISTING STORM SEWER
- PROPOSED MANHOLE
- PROPOSED CATCH BASIN
- PROPOSED STORM SEWER
- PROPOSED INLET
- REC PROPOSED FLARED END SECTION STRUCTURE TO BE RECONSTRUCTED



NOTE: WHEREVER NEEDED TO PLUG THE EXISTING STORM SEWER, ITS COST WILL BE INCLUDED IN THE STORM SEWER INSTALLATION.
 * STORM SEWER (WATERMAIN REQUIREMENT), 400 mm

REVISIONS

NAME	DATE

ILLINOIS DEPARTMENT OF TRANSPORTATION

**IL. RTE. 50
EXISTING & PROPOSED
DRAINAGE & UTILITIES PLAN**

SCALE 1:500
DATE 5/19/2011

DRAWN BY
CHECKED BY