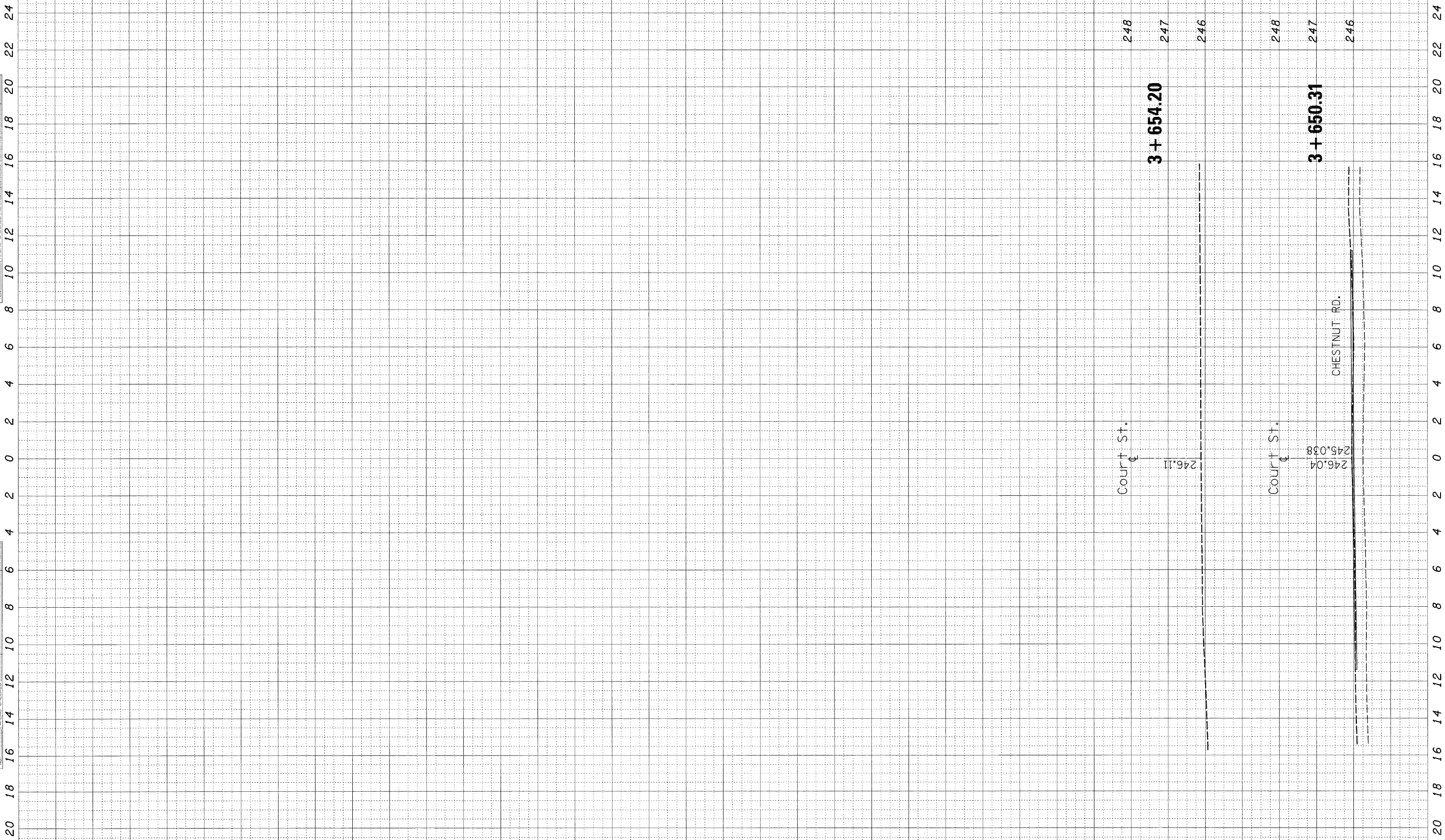


CONTRACT # 60445

FINAL SURVEY	SURVEYED	BY	DATE
NOTE BOOK NO.	PLOTTED AREAS		
	CHECKED		

ORIGINAL SURVEY	SURVEYED	BY	DATE
NOTE BOOK NO.	PLOTTED AREAS		
	CHECKED		

F.A.P. RTE.	SECTION	COUNTY	TOTAL SHEETS	SHEET NO.
840	143N	WILL	121	101
STA.	TO STA.			
FED. ROAD DIST. NO.	ILLINOIS	FED. AID PROJECT		



248
247
246

Court St.
246.11

248
247
246

3 + 654.20

248
247
246

Court St.
246.04

248
247
246

CHESTNUT RD.

3 + 650.31