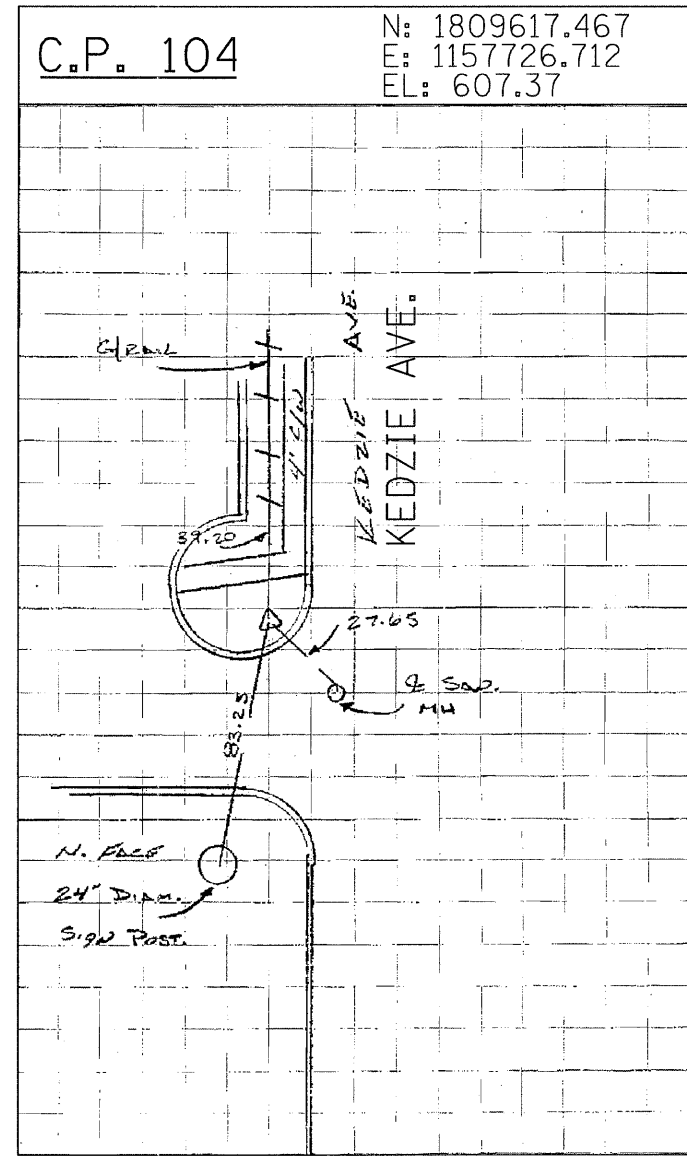
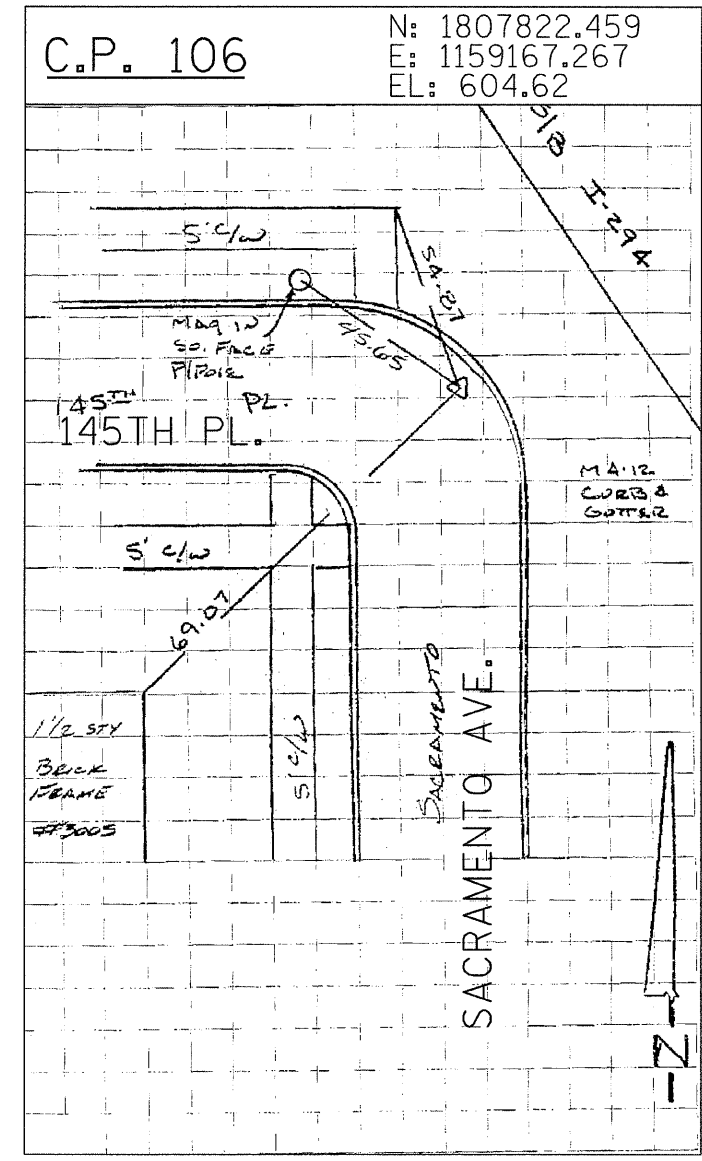


NORTHBOUND I-57 147TH STREET EXIT RAMP



SET 5/8 " IRON ROD 3.42 NORTHWEST OF BACK OF CURB AT NORTHWEST CORNER OF KEDZIE AVE. AND 143RD ST.



SET MAG NAIL AT 145TH PLACE AND SACRAMENTO AVENUE.

TYLIN INTERNATIONAL

USER NAME = #USER#
PLOT SCALE = #SCALE#
PLOT DATE = 4/29/2011

DESIGNED - EMK
DRAWN - EMK
CHECKED - SES
DATE - 5/5/2011

REVISED -
REVISED -
REVISED -
REVISED -

**STATE OF ILLINOIS
DEPARTMENT OF TRANSPORTATION**

**KEDZIE AVENUE PROJECT
SURVEY TIES FOR CONTROL POINTS**
SCALE: N.T.S. SHEET NO. 7 OF 10 SHEETS STA. TO STA.

F.A. RTE.	SECTION	COUNTY	TOTAL SHEETS	SHEET NO.
57	1313.1B-1	COOK	162	16
FED. ROAD DIST. NO.			ILLINOIS FED. AID PROJECT	
			CONTRACT NO. 60K14	