

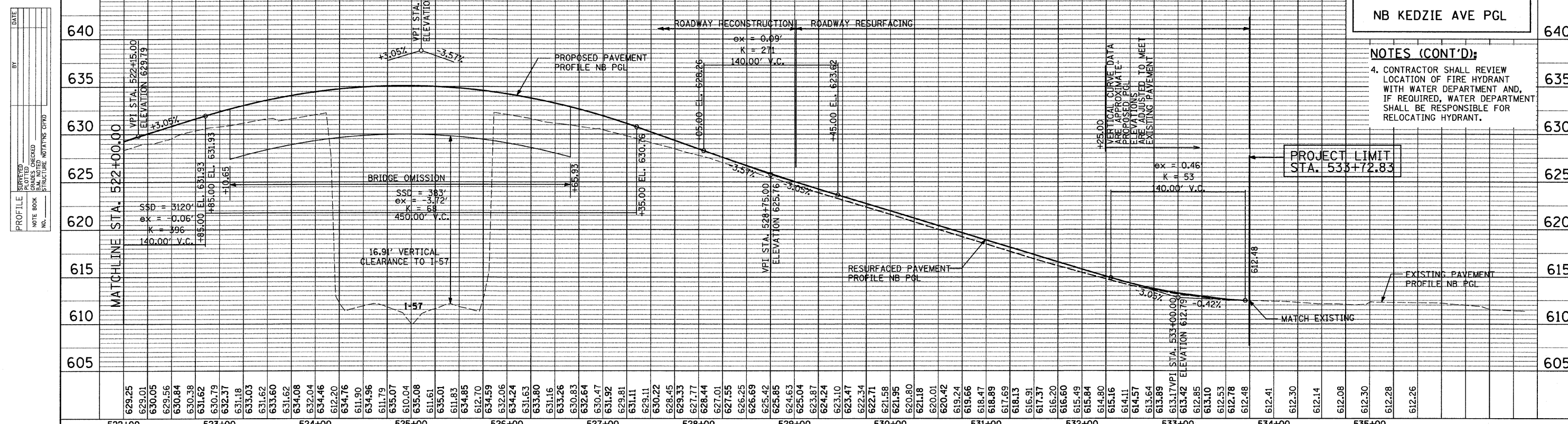
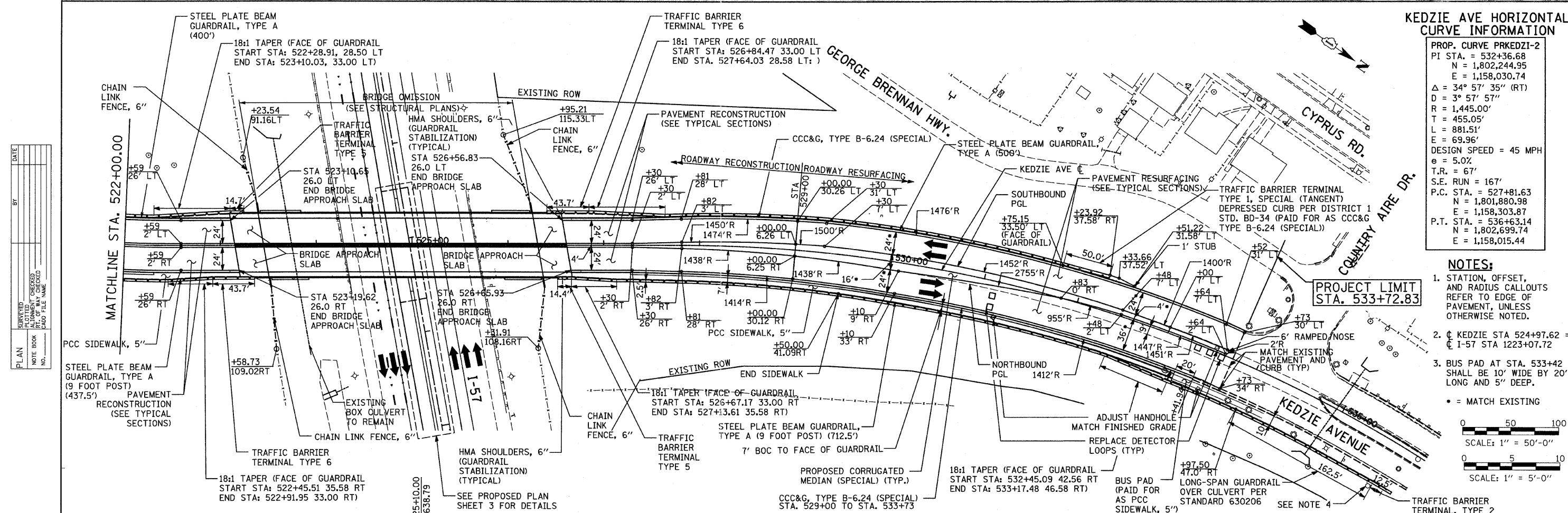
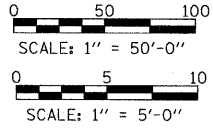
**KEDZIE AVE HORIZONTAL CURVE INFORMATION**

PROP. CURVE PRKEDZI-2  
 PI STA. = 532+36.68  
 N = 1,802,244.95  
 E = 1,158,030.74  
 Δ = 34° 57' 35" (RT)  
 D = 3° 57' 57"  
 R = 1,445.00'  
 T = 455.05'  
 L = 881.51'  
 E = 69.96'  
 DESIGN SPEED = 45 MPH  
 e = 5.0%  
 T.R. = 67'  
 S.E. RUN = 167'  
 P.C. STA. = 527+81.63  
 N = 1,801,880.98  
 E = 1,158,303.87  
 P.T. STA. = 536+63.14  
 N = 1,802,699.74  
 E = 1,158,015.44

**NOTES:**

- STATION, OFFSET, AND RADIUS CALLOUTS REFER TO EDGE OF PAVEMENT, UNLESS OTHERWISE NOTED.
- KEDZIE STA 524+97.62 = C 1-57 STA 1223+07.72
- BUS PAD AT STA. 533+42 SHALL BE 10' WIDE BY 20' LONG AND 5" DEEP.

\* = MATCH EXISTING



**NB KEDZIE AVE PGL**

**NOTES (CONT'D):**

- CONTRACTOR SHALL REVIEW LOCATION OF FIRE HYDRANT WITH WATER DEPARTMENT AND, IF REQUIRED, WATER DEPARTMENT SHALL BE RESPONSIBLE FOR RELOCATING HYDRANT.

<b>TYLIN INTERNATIONAL</b> USER NAME = #USER# PLOT SCALE = #SCALE# PLOT DATE = 5/3/2011	DESIGNED - JU DRAWN - EMK CHECKED - SES DATE - 5/5/2011	REVISED - REVISED - REVISED - REVISED -	STATE OF ILLINOIS DEPARTMENT OF TRANSPORTATION	KEDZIE AVENUE PROJECT KEDZIE AVE PLAN AND PROFILES	F.A. RTE. 57 SECTION 1313.1B-1 COUNTY COOK TOTAL SHEETS 162 SHEET NO. 27 CONTRACT NO. 60K14 FED. ROAD DIST. NO. ILLINOIS FED. AID PROJECT
	SCALE: 1"=50' SHEET NO. 2 OF 3 SHEETS STA. 522+00 TO STA. 533+72			SHEET NO. 2 OF 3 SHEETS STA. 522+00 TO STA. 533+72	
	DATE: 5/5/2011			CONTRACT NO. 60K14	