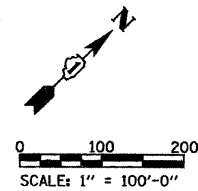
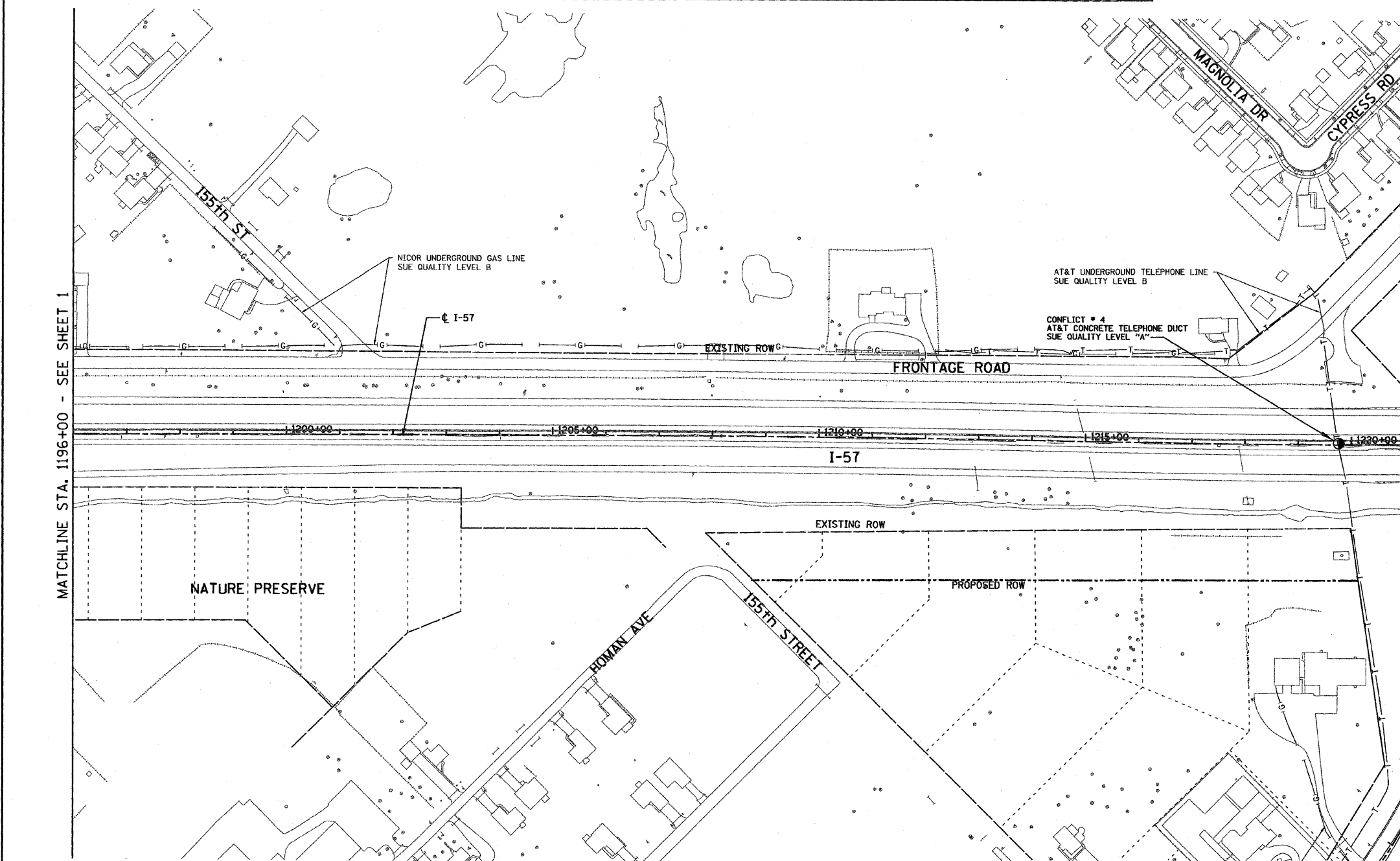


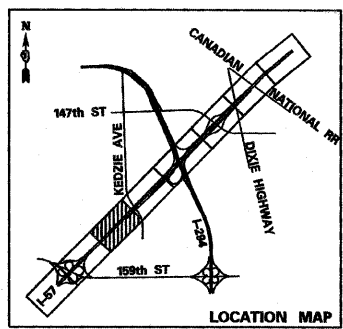
VERIFIED UTILITY INFORMATION - SUE QUALITY LEVEL A

CONFLICT NO.	SIZE / TYPE	NORTHING	EASTING	STATION	OFFSET	TOP OF UTILITY	EXISTING CUT	REFERENCE GROUND ELEV.	COMMENTS
4	CONCRETE DUCT	1801415.713	1158243.120	1219+75.8	2.98 LT.	605.62	5.25	610.87	AT&T



STATE OF ILLINOIS)
 COUNTY OF COOK) S.S.
 UTILITY(IES) SHOWN HEREON HAVE BEEN INVESTIGATED BY ASE IN ACCORDANCE WITH SUE INDUSTRY STANDARDS QUALITY LEVEL A (QLA) AND B (QLB). ALL OTHER INFORMATION SHOWN HAS BEEN PROVIDED BY OTHERS.
 FIELD WORK WAS PERFORMED BETWEEN THE 8TH OF APRIL AND 22ND DAY OF APRIL, A.D., 2010.
 IN WITNESS WHEREOF, I HAVE HEREUNTO SET MY HAND AND SEAL THIS 23RD DAY OF APRIL A.D., 2010. CHICAGO, IL.

Steven M. Riens
 STEVEN M. RIENS - ILLINOIS PROFESSIONAL ENGINEER NUMBER 62-044619
 MY LICENSE EXPIRES 11/30/2011



AMERICAN
 SURVEYING & ENGINEERING, P.C.
 SURVEYORS - ENGINEERS
 GEODESISTS - MAPPING SCIENTISTS
 Chicago 312-277-2000 / Fax 312-277-2002
 Dixon 815-288-6231 / Fax 815-288-6277
 Aurora 603-897-4105 / Fax 630-897-4121
 Illinois Professional Design Firm No. 184-003192

UTILITY LINE LEGEND

	EXISTING UNDERGROUND TELEPHONE		EXISTING UNDERGROUND GAS
	EXISTING UNDERGROUND WATER		EXISTING UNDERGROUND CABLE TV
	EXISTING UNDERGROUND ELECTRIC		EXISTING UNDERGROUND FIBER OPTIC

CONFLICT * (SUE QUALITY LEVEL A)

NOTES:
 1. HORIZONTAL CONTROL, VERTICAL CONTROL, CENTERLINE ALIGNMENT, AND TOPOGRAPHIC FEATURES WERE SUPPLIED BY ILLINOIS DEPARTMENT OF TRANSPORTATION.

APPROVED: _____ CHIEF ENGINEER DATE: _____	TYLIN INTERNATIONAL	THE ILLINOIS STATE TOLL HIGHWAY AUTHORITY 2700 OGDEN AVENUE DOWNERS GROVE, ILLINOIS 60515	REVISIONS	STA. 1196+00 TO STA. 1221+00	DRAWING NO.			
			<table border="1"> <thead> <tr> <th>NO.</th> <th>DATE</th> <th>DESCRIPTION</th> </tr> </thead> <tbody> <tr> <td> </td> <td> </td> <td> </td> </tr> </tbody> </table>	NO.	DATE	DESCRIPTION		
NO.	DATE	DESCRIPTION						

TYLIN INTERNATIONAL USER NAME = #USER# PLOT SCALE = #SCALE# PLOT DATE = 5/3/2011	DESIGNED - DM DRAWN - DM CHECKED - SES DATE - 5/5/2011	REVISED - REVISED - REVISED - REVISED -	STATE OF ILLINOIS DEPARTMENT OF TRANSPORTATION	KEDZIE AVENUE PROJECT SUBSURFACE UTILITY LOCATIONS	SCALE: N.T.S.	SHEET NO. 1 OF 2 SHEETS	STA. TO STA.	F.A. RTE. 57	SECTION 1313.1B-1	COUNTY COOK	TOTAL SHEETS 162	SHEET NO. 48
					FED. ROAD DIST. NO.	ILLINOIS FED. AID PROJECT	CONTRACT NO. 60K14					

p:\602540(57-294)\road\p2_kedzie\VP2_SUE_SHT01.dgn 11:37:20 AM 5/3/2011