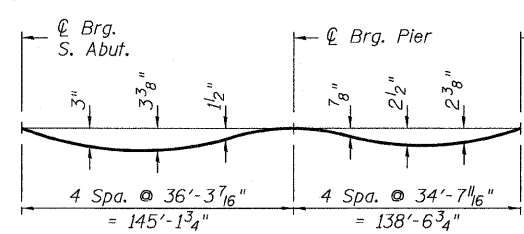


**EXTERIOR GIRDER
DEAD LOAD DEFLECTION DIAGRAM**

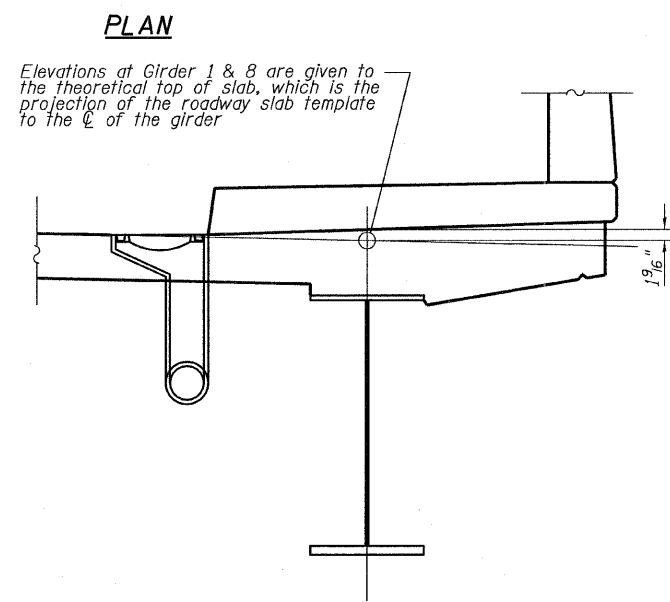
(Includes weight of concrete only.)



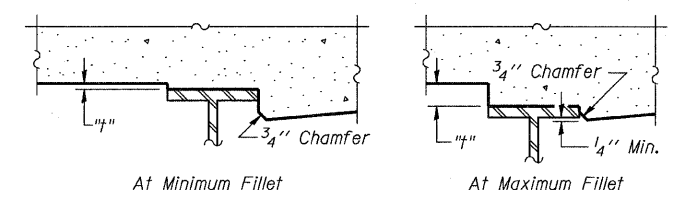
**INTERIOR GIRDER
DEAD LOAD DEFLECTION DIAGRAM**

(Includes weight of concrete only.)

Note:
The above deflections are not for use in the field if the Engineer is working from the "Theoretical Grade Elevations Adjusted for Dead Load Deflections".



LOCATION OF ELEVATIONS AT GIRDERS 1 & 8



To determine "t": After all structural steel has been erected, elevations of the top flanges of the girders shall be taken at intervals shown in the "Dead Load Deflection Diagram". These elevations subtracted from the "Theoretical Grade Elevations Adjusted for Dead Load Deflection" shown on the following sheets, minus slab thickness, equals the fillet heights "t" above top flange of girders.

FILLET HEIGHTS

TYLIN INTERNATIONAL

USER NAME =	DESIGNED - JKO	REVISED -
PLOT SCALE =	CHECKED - CPT	REVISED -
PLOT DATE = 5/5/2011	DRAWN - TSK	REVISED -
	CHECKED - JKO	REVISED -

**STATE OF ILLINOIS
DEPARTMENT OF TRANSPORTATION**

**TOP OF SLAB ELEVATIONS - LAYOUT
STRUCTURE NO. 016-1196**

SHEET NO. 6 OF 40 SHEETS

F.A.I. RTE. 57	SECTION 1313.1B-1	COUNTY COOK	TOTAL SHEETS 162	SHEET NO. 67
ILLINOIS FED. AID PROJECT			CONTRACT NO. 60K14	

P:\602540(57-294)\STRUCTURAL\kedzie over 157\final structure plans-active\0161196-60J27-006-Top_Slab_Elev.L.dwg 5/3/2011 1:34:12 PM