

PLAN

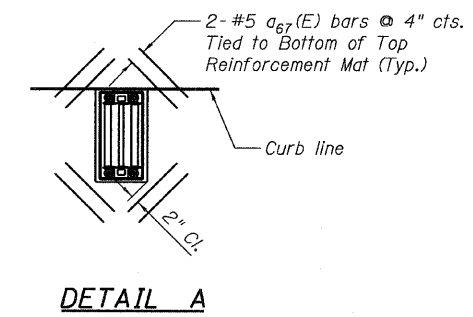
NOTES:

1. For Bill of Material, see sheet 15 of 40.
2. For Section A-A see sheet 16 of 40.
3. Bars indicated thus: 20x3-#5 etc. indicates 20 lines of bars with 3 lengths per line.
4. Cut longitudinal bars to clear drainage scuppers.
5. For parapet reinforcement details, see sheet 17 of 40.
6. For Scupper locations, See Sheet 21 of 40.
7. 1/8" Aluminum Sheet ASTM B209 alloy 3003-H14, coated to minimize reaction with wet concrete. Cost included with Concrete Superstructure.

* Order a₆₅(E) and a₆₆(E) bars full length. Cut to fit skew and use the remainder of bars in opposite end.

MINIMUM BAR LAPS

Bar	Lap
#5	3'-3"
#6	3'-10"



TYLIN INTERNATIONAL	USER NAME =	DESIGNED - JKO	REVISED -	STATE OF ILLINOIS DEPARTMENT OF TRANSPORTATION	SUPERSTRUCTURE STRUCTURE NO. 016-1196	F.A.I. RTE. 57	SECTION 1313.1B-1	COUNTY COOK	TOTAL SHEETS 162	SHEET NO. 74	
	PLOT SCALE =	CHECKED - CPT	REVISED -			CONTRACT NO. 60K14					
	PLOT DATE = 5/5/2011	DRAWN - TSK	REVISED -			ILLINOIS FED. AID PROJECT					
		CHECKED - JKO	REVISED -			SHEET NO. 13 OF 40 SHEETS					