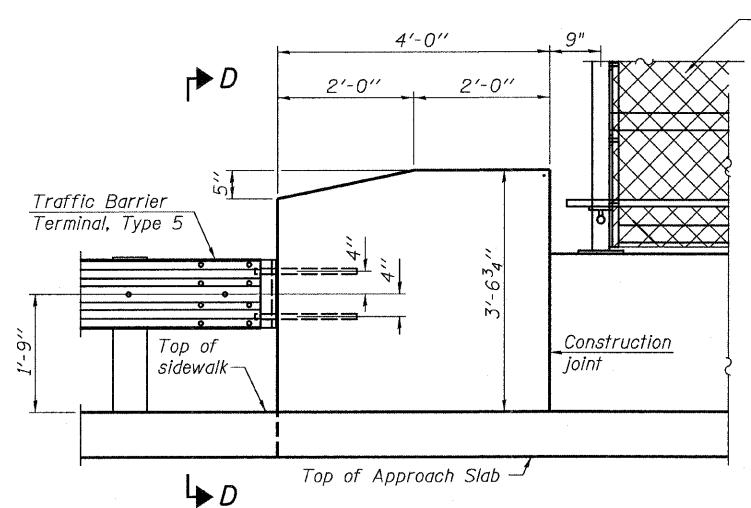


**PLAN**

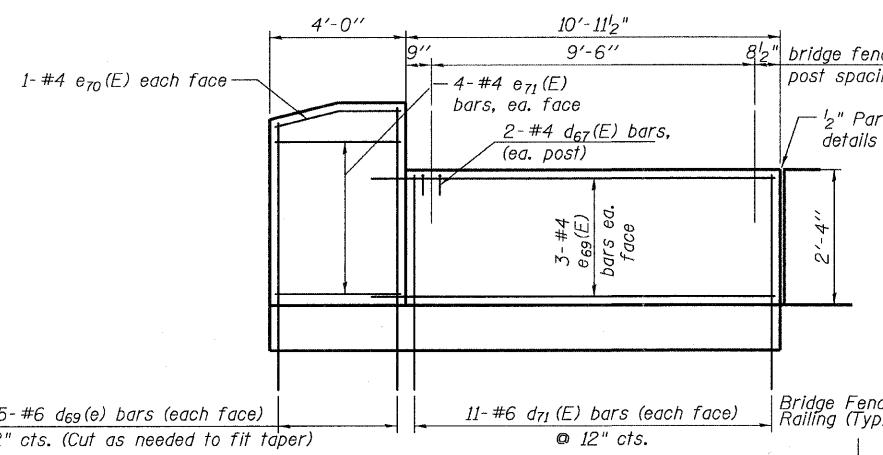
\* Tilt #9 b<sub>72</sub>(E) bars as required to maintain clearance.

**NOTES:**

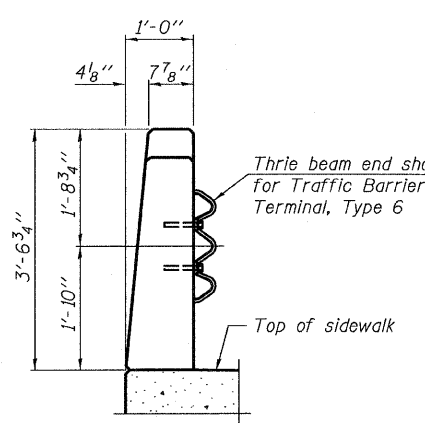
1. South Approach shown, North Approach similar.



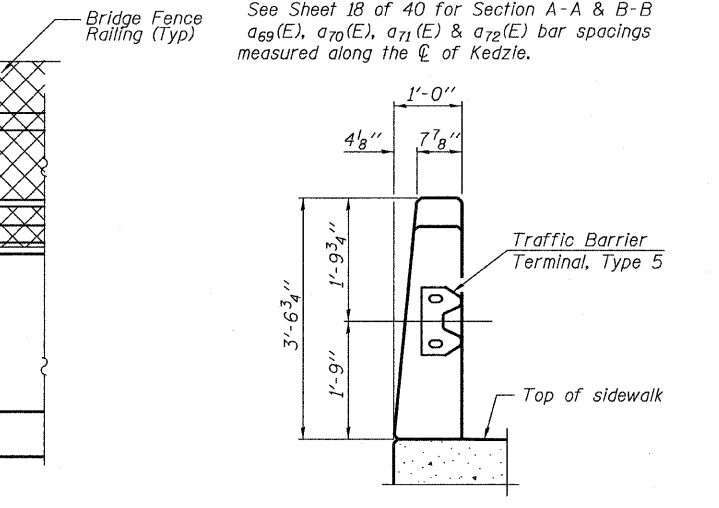
**DETAIL B**  
(At Traffic Barrier Terminal, Type 5)



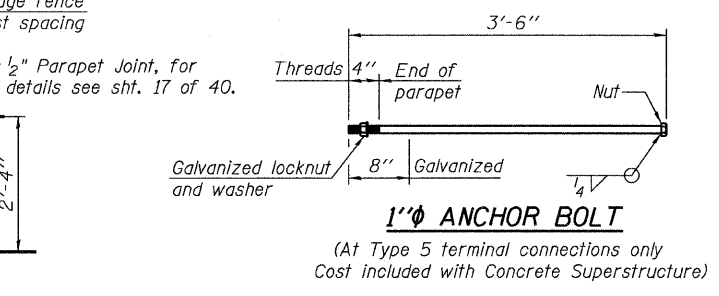
**VIEW C-C**  
(typical at opposite parapet also)



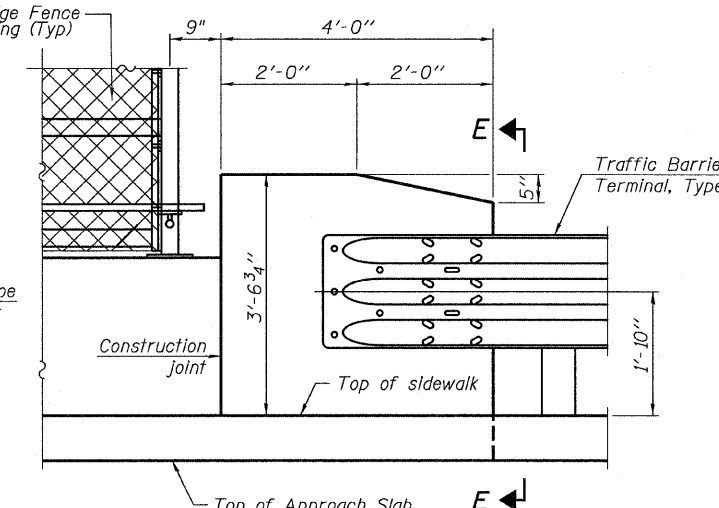
**VIEW E-E**



**VIEW D-D**



**1\"/>**



**DETAIL C**  
(At Traffic Barrier Terminal, Type 6)

<b>TYLIN INTERNATIONAL</b>	USER NAME =	DESIGNED - JKO	REVISED -
	PLOT SCALE =	CHECKED - CPT	REVISED -
	PLOT DATE = 5/5/2011	DRAWN - TSK	REVISED -
		CHECKED - JKO	REVISED -

**STATE OF ILLINOIS**  
**DEPARTMENT OF TRANSPORTATION**

**APPROACH SLAB - 1**  
**STRUCTURE NO. 016-1196**  
SHEET NO. 18 OF 40 SHEETS

F.A.I. RTE. 57	SECTION 1313.1B-1	COUNTY COOK	TOTAL SHEETS 162	SHEET NO. 79
ILLINOIS FED. AID PROJECT				CONTRACT NO. 60K14

P:\602540\57-294\STRUCTURAL\kedzie over I57\final structure plans-active\0161196-60J27-018-App\_Slab\_Dtls.I.dgn 5/3/2011 1:34:28 PM