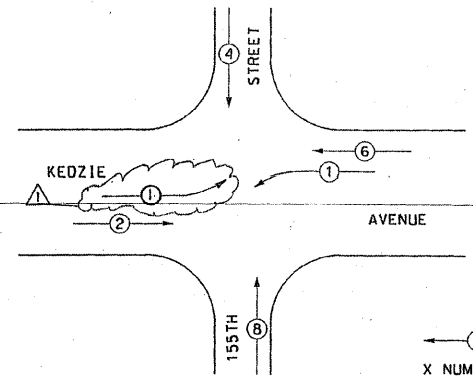


County Highway	Fiscal Year	Sheet No.	Total Sheets
W46	1998	65	105
Section 96-W4608-01-RP			

CONTROLLER SEQUENCE

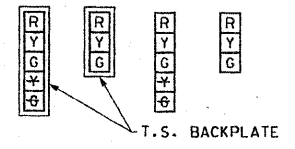
REFERRING TO STANDARD 857001. THE VEHICULAR PHASES USED ARE DESIGNATED BELOW.



PHASE DESIGNATION DIAGRAM

LEGEND
 X — VEHICULAR MOVEMENT
 X NUMBER REFERS TO ASSOCIATED PHASE

SIGNAL FACES



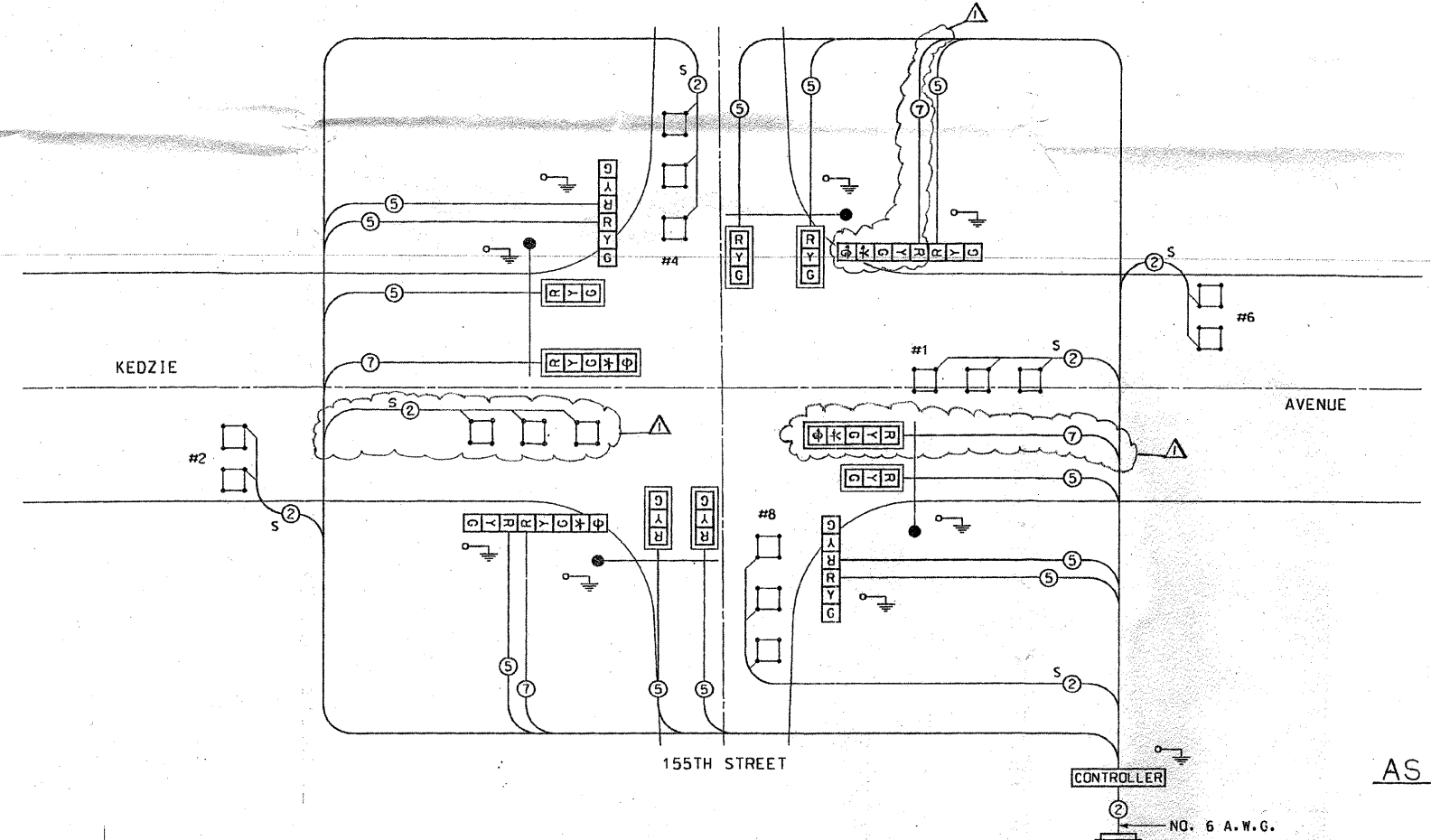
NOTE: ALL 300mm LENSES

SIGNAL LENSES

- R RED
- Y YELLOW
- G GREEN
- Y YELLOW TURN INDICATOR
- G GREEN TURN INDICATOR

CABLE PLAN LEGEND

- [R] 300mm TRAFFIC SIGNAL SECTION
- [CONTROLLER] CONTROLLER CABINET
- [] VEHICLE DETECTOR INDUCTION LOOP
- (2) DENOTES NUMBER OF CONDUCTORS (NEW) ALL LOOP DETECTOR CABLE TO BE TWISTED & SHIELDED. ALL CABLE NO. 14 EXCEPT AS INDICATED.
- 'P' [R] SIGNAL FACE WITH BACKPLATE 'P' INDICATES PROGRAMMED
- S GROUNDING SYSTEM CONNECTION
- S SHIELDED & TWISTED
- S SERVICE INSTALLATION, TYPE C



ITEM	UNIT	QUANTITY	DESCRIPTION
AZ-5	EACH	2	TRAFFIC SIGNAL, I-FACE, 5 SECTION
AZ-10	EACH	1	TRAFFIC SIGNAL BACKPLATE
AZ-23	EACH	1	INDUCTIVE LOOP DETECTOR
AZ-24	FOOT	135	DETECTOR LOOP, TYPE I
AZ-30	FOOT	268	ELECTRIC CABLE IN CONDUIT SIGNAL-NO.14 7/C
AZ-31	FOOT	87	ELECTRIC CABLE IN CONDUIT LEAD IN- NO. 14 2/C TWISTED AND SHIELDED
AZ-57	EACH	2	REMOVE EXISTING TRAFFIC SIGNAL HEAD
AZ-65	EACH	1	MODIFY EXISTING TRAFFIC SIGNAL CONTROLLER, PER PHASE
GX-3	FOOT	0	GALVANIZE STEEL CONDUIT PUSHED- 2 IN.
GX-28	FOOT	268	PULL ELECTRIC CABLE FROM CONDUIT
GX-29	FOOT	0	TRENCH AND BACKFILL FOR ELECTRICAL WORK
GX-34	EACH	0	CONCRETE HEAVY DUTY HANDHOLE
GX-39	EACH	0	DRILL EXISTING HANDHOLE

CCHD DOES NOT GUARANTEE THE ACCURACY OF THESE PLANS. THE RECIPIENT IS REQUIRED TO FIELD CHECK THE EXISTING INSTALLATION TO VERIFY THE EQUIPMENT LOCATIONS

COUNTY OF COOK
DEPARTMENT OF HIGHWAYS

TRAFFIC SIGNAL INSTALLATION
KEDZIE AVENUE
AT 155TH STREET

COMPUTED JAJ
DRAWN JAJ
CHECKED COR/DGW

AS BUILT

CABLE PLAN
N.T.S.

FOR INFORMATION ONLY

ADD N.B. LEFT TURN PHASE 7-1-01 UNDER 01-8EM2M29-6M

24-JAN-1998 16:44 JJones
e:\23401\cedd\td\cads\kedzie03.dgn

TYLIN INTERNATIONAL

USER NAME = #USER#	DESIGNED - DM	REVISED -
PLCT SCALE = #SCALE#	DRAWN - DM	REVISED -
PLCT DATE = 5/3/2011	CHECKED - SES	REVISED -
	DATE - 5/5/2011	REVISED -

STATE OF ILLINOIS
DEPARTMENT OF TRANSPORTATION

KEDZIE AVENUE PROJECT
EXISTING TRAFFIC SIGNAL PLANS - 155TH STREET

SCALE: N.T.S. SHEET NO. 2 OF 4 SHEETS STA. TO STA.

F.A. R.T.E.	SECTION	COUNTY	TOTAL SHEETS	SHEET NO.
57	1313.1B-1	COOK	162	103
CONTRACT NO. 60K14			ILLINOIS FED. AID PROJECT	