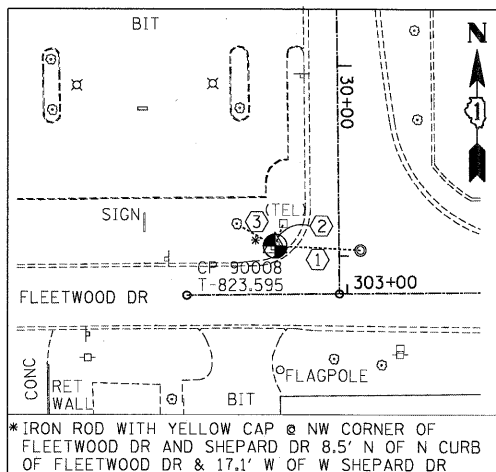
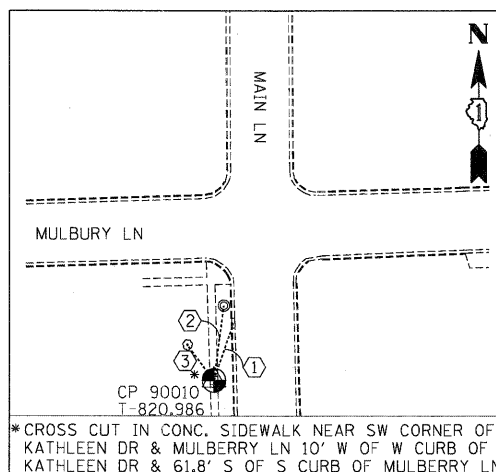


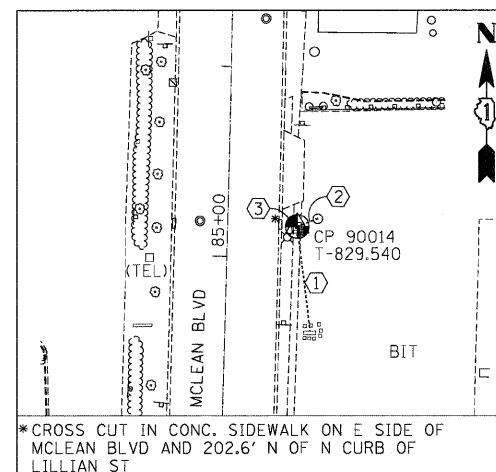
- (N 1950816.625, E 988336.015, ELEV. 826.040)
 ① 13.05' TO THE BACK OF CURB
 ② 66.30' TO THE CENTER OF FIRE HYDRANT
 ③ 52.20' TO THE CENTER OF WATER VALVE VAULT (MH)



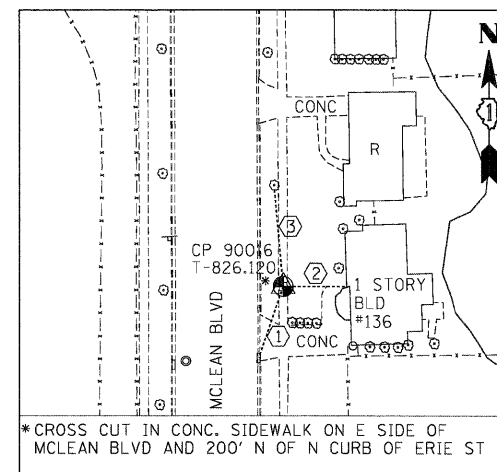
- (N 1950212.996, E 989020.547, ELEV. 823.480)
 ① 45.30' TO THE CENTER OF WATER VALVE VAULT (MH)
 ② 12.40' TO THE CENTER OF TELEPHONE CABLE BOX
 ③ 20.50' TO THE PK NAIL SET ON SOUTH FACE OF 12" TREE



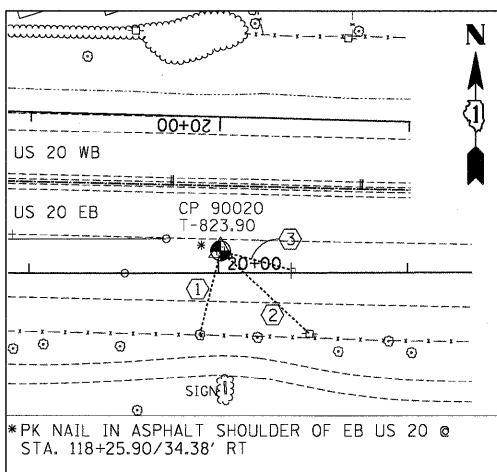
- (N 1952288.720, E 988592.527, ELEV. 820.880)
 ① 31.90' TO THE CENTER OF GUTTER INLET
 ② 39.50' TO THE CENTER OF CATCH BASIN (MH)
 ③ 23.40' TO THE PK NAIL SET IN EAST FACE OF 6" TREE



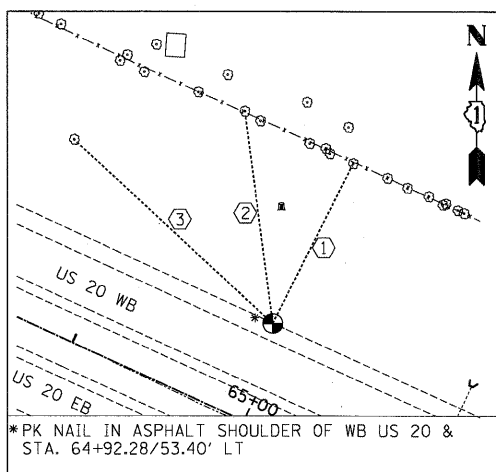
- (N 1952198.206, E 990110.538, ELEV. 829.370)
 ① 54.45' TO THE NW CORNER OF PIETROS PIZZA'S SIGN
 ② 11.60' TO THE CENTER OF CATCH BASIN
 ③ 7.80' TO THE CENTER OF LIGHT POLE



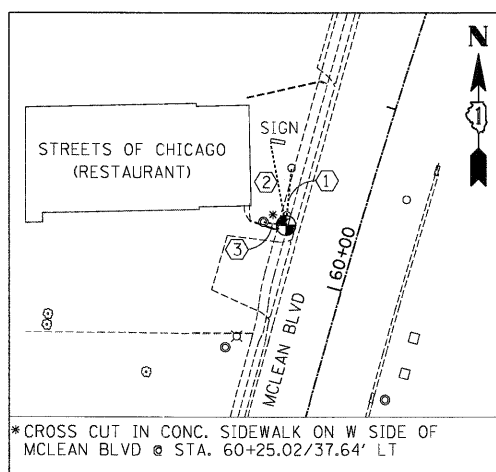
- (N 1953522.787, E 990122.104, ELEV. 825.980)
 ① 39.10' TO THE CENTER OF GUTTER INLET
 ② 33.85' TO THE CORNER OF THE 1 STORY FRAME BLD #169
 ③ 51.60' TO THE PK NAIL SET IN SOUTH FACE OF 26" TREE



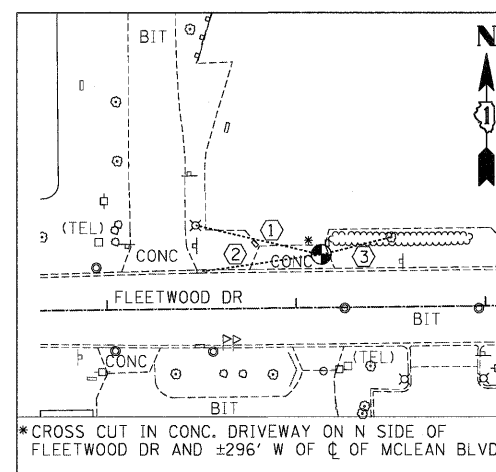
- (N 1950792.807, E 991980.556, ELEV. 823.810)
 ① 45.00' TO THE PK NAIL SET IN NORTH FACE OF 16" TREE
 ② 64.10' TO THE PK NAIL SET IN NORTH FACE OF POWER POLE
 ③ 38.70' TO THE CENTER OF SNTG (EMERGENCY PARKING ONLY)



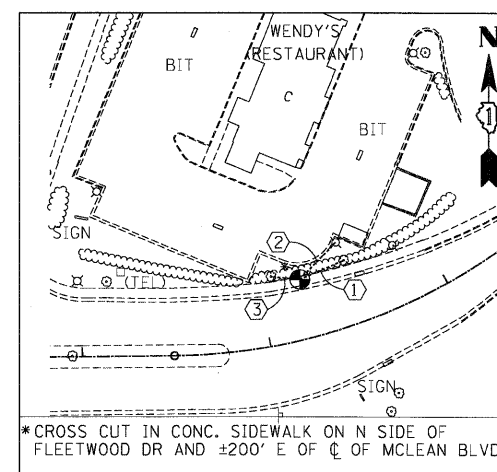
- (N 1952521.485, E 986984.329, ELEV. 823.490)
 ① 94.20' TO THE PK NAIL SET IN SOUTH FACE OF 10" TREE
 ② 110.85' TO THE PK NAIL SET IN SOUTH FACE OF 12" TREE
 ③ 142.50' TO THE PK NAIL SET IN EAST FACE OF 12" TREE



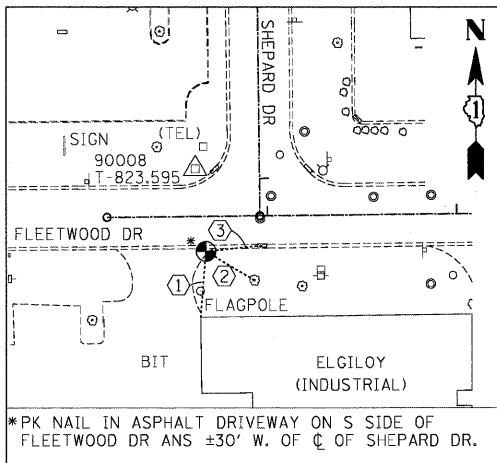
- (N 1949781.472, E 989579.743, ELEV. 826.940)
 ① 30.40' TO THE CENTER OF WATER BUFFALO BOX
 ② 44.35' TO THE SW CORNER OF RESTAURANT'S SIGN
 ③ 12.00' TO THE CENTER OF SANITARY MANHOLE



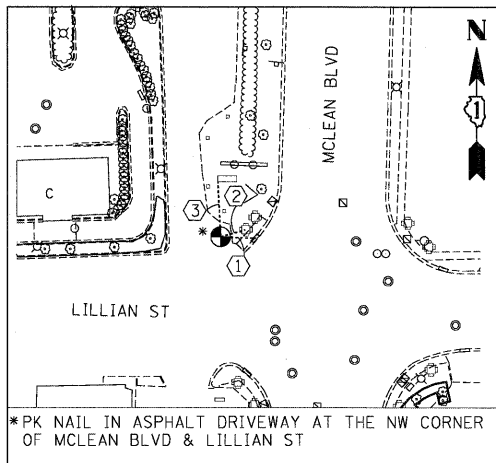
- (N 1950220.667, E 989471.903, ELEV. 825.320)
 ① 68.20' TO THE CENTER OF LIGHT POLE
 ② 64.20' TO THE CENTER OF GUTTER INLET
 ③ 37.50' TO THE PK NAIL SET IN SOUTH FACE OF 16" TREE



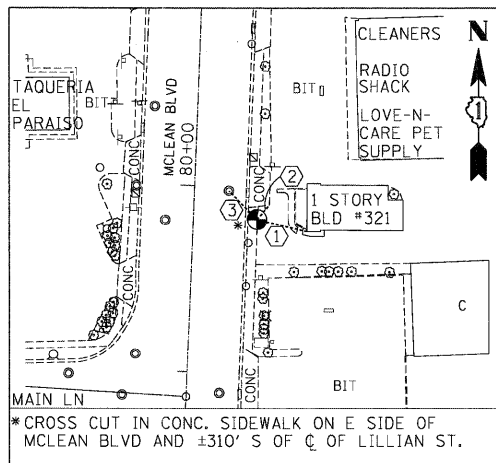
- (N 1950237.454, E 989973.590, ELEV. 824.710)
 ① 25.30' TO THE PK NAIL SET IN SOUTH FACE OF 12" TREE
 ② 27.45' TO THE CENTER OF LIGHT POLE
 ③ 15.35' TO THE PK NAIL SET IN SOUTH FACE OF 14" TREE



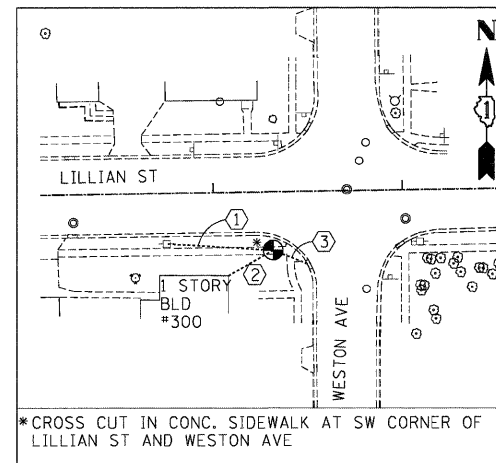
- (N 1950169.350, E 989026.104, ELEV. 823.170)
 ① 34.70' TO THE NW CORNER OF 1 STORY BRICK BLD
 ② 29.40' TO THE PK NAIL SET IN NORTH FACE OF 18" TREE
 ③ 30.00' TO THE CENTER OF GUTTER INLET



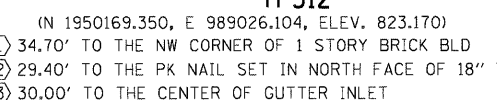
- (N 1952013.765, E 990009.054, ELEV. 829.860)
 ① 18.60' TO THE CENTER OF GUTTER INLET
 ② 13.55' TO THE CENTER OF TRAFFIC SIGNAL POLE
 ③ 29.25' TO THE SW CORNER OF ELGIN MALL'S SIGN



- (N 1951665.021, E 990089.560, ELEV. 831.840)
 ① 28.30' TO THE SW CORNER OF 1 STORY FRAME BLD #321
 ② 10.10' TO THE SE CORNER OF CONC. DRIVEWAY
 ③ 21.00' TO THE CENTER OF SANITARY MANHOLE



- (N 1951948.255, E 990397.884, ELEV. 831.060)
 ① 56.05' TO THE PK NAIL SET IN EAST FACE OF POWER POLE
 ② 27.25' TO THE NE CORNER OF 1 STORY FRAME BLD #300
 ③ 20.40' TO THE CENTER OF GUTTER INLET



- (N 1950169.350, E 989026.104, ELEV. 823.170)
 ① 34.70' TO THE NW CORNER OF 1 STORY BRICK BLD
 ② 29.40' TO THE PK NAIL SET IN NORTH FACE OF 18" TREE
 ③ 30.00' TO THE CENTER OF GUTTER INLET

5:12:2011.002344
 \\S:\8044\KAW\1011\081213\79-081\CV\11\KAD\606\98\98\SHEET\1\606\98-SIT-ALL\DMNT84.DGN
 TENG & ASSOCIATES, INC.
 ENGINEERS/ARCHITECTS/PLANNERS
 CHICAGO, ILLINOIS

FILE NAME =	USER NAME = #USER#	DESIGNED - MRK	REVISED -
#FILE#		DRAWN - JFS	REVISED -
		CHECKED - DDH	REVISED -
		DATE - 05/18/11	REVISED -

STATE OF ILLINOIS
DEPARTMENT OF TRANSPORTATION
 FAP ROUTE 345 / US ROUTE 20

ALIGNMENT, TIES & BENCHMARKS IV				
SCALE: 1"=200'	SHEET NO.	OF SHEETS	STA.	TO STA.

F.A.P. RTE.	SECTION	COUNTY	TOTAL SHEETS	SHEET NO.
345	BR-HB-2-BY-1	KANE	434	36
FED. ROAD DIST. NO.		ILLINOIS FED. AID PROJECT		CONTRACT NO. 60K90