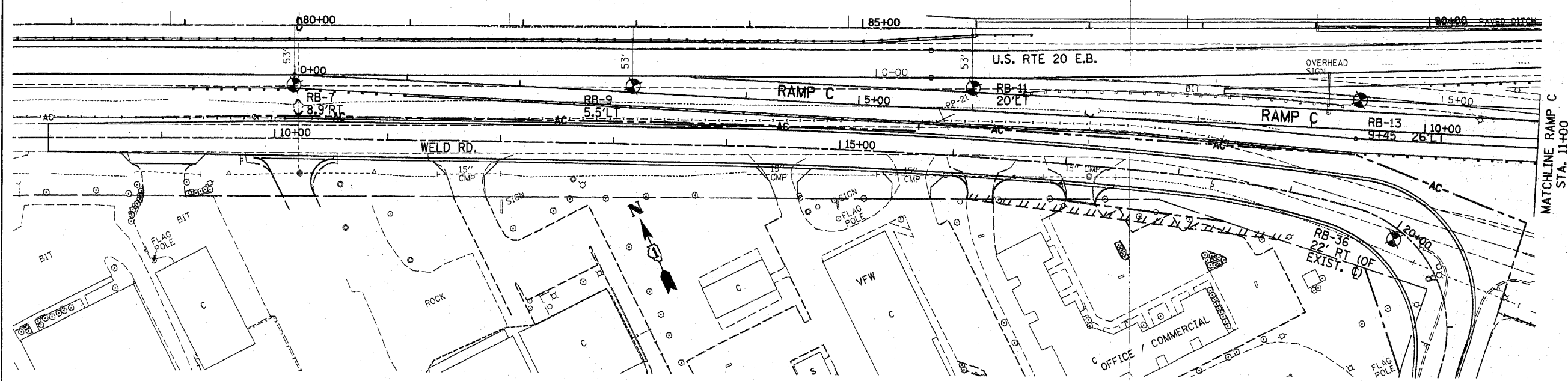
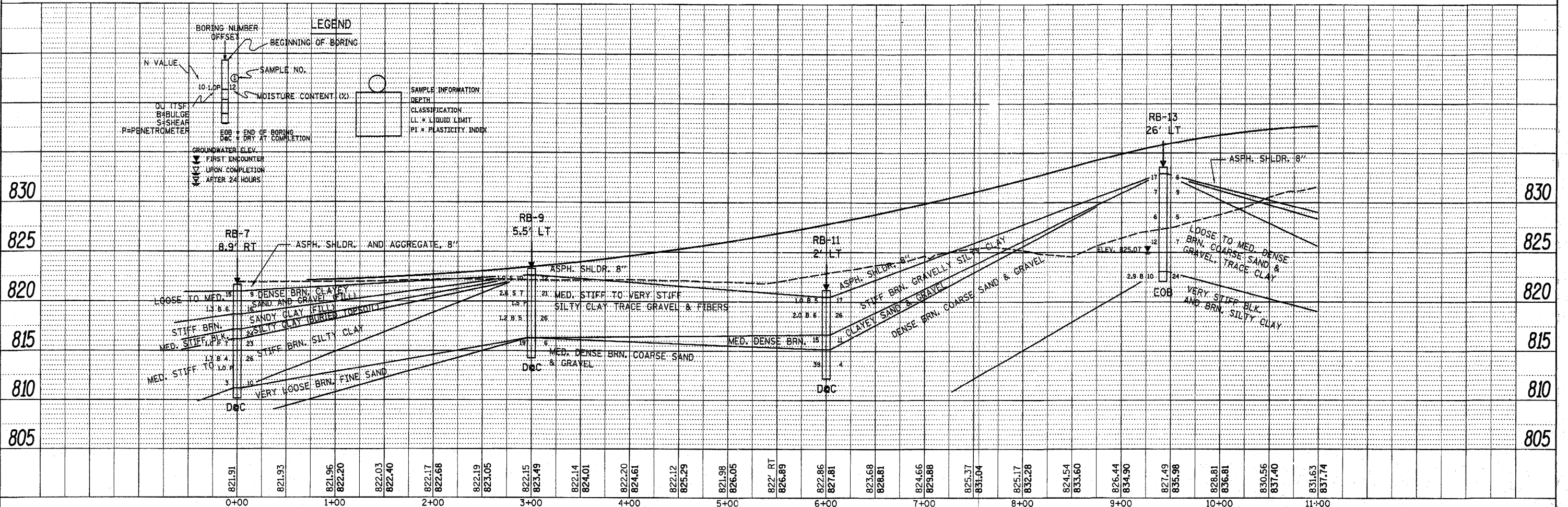


DATE	
BY	
REVIEWED	
PLANNED	
ALIGNED	
CHECKED	
NOTE BOOK	
CADD FILE NAME	
NO.	



DATE	
BY	
REVIEWED	
PLANNED	
ALIGNED	
CHECKED	
NOTE BOOK	
STRUCTURE NOTATIONS CHKD	
NO.	



FILE NAME =	USER NAME = lszekrf	DESIGNED -	REVISED -	STATE OF ILLINOIS DEPARTMENT OF TRANSPORTATION		SOILS PLAN AND PROFILE RAMP "C" (U.S. RTE. 20)		F.A.P. RTE. 345	SECTION 8R-HB-2-BY-1	COUNTY KANE	TOTAL SHEETS 434	SHEET NO. 68
ci:\pwwork\pwwork\l\szekrf\d0161624\shs-RampsSoils.dgn		DRAWN -	REVISED -								CONTRACT NO. 60K90	
PLOT SCALE = 50.0000' / IN.		CHECKED -	REVISED -					SCALE:	SHEET NO. OF	SHEETS	STA. TO STA.	ILLINOIS FED. AID PROJECT
PLOT DATE = 10/28/2010		DATE	REVISED									