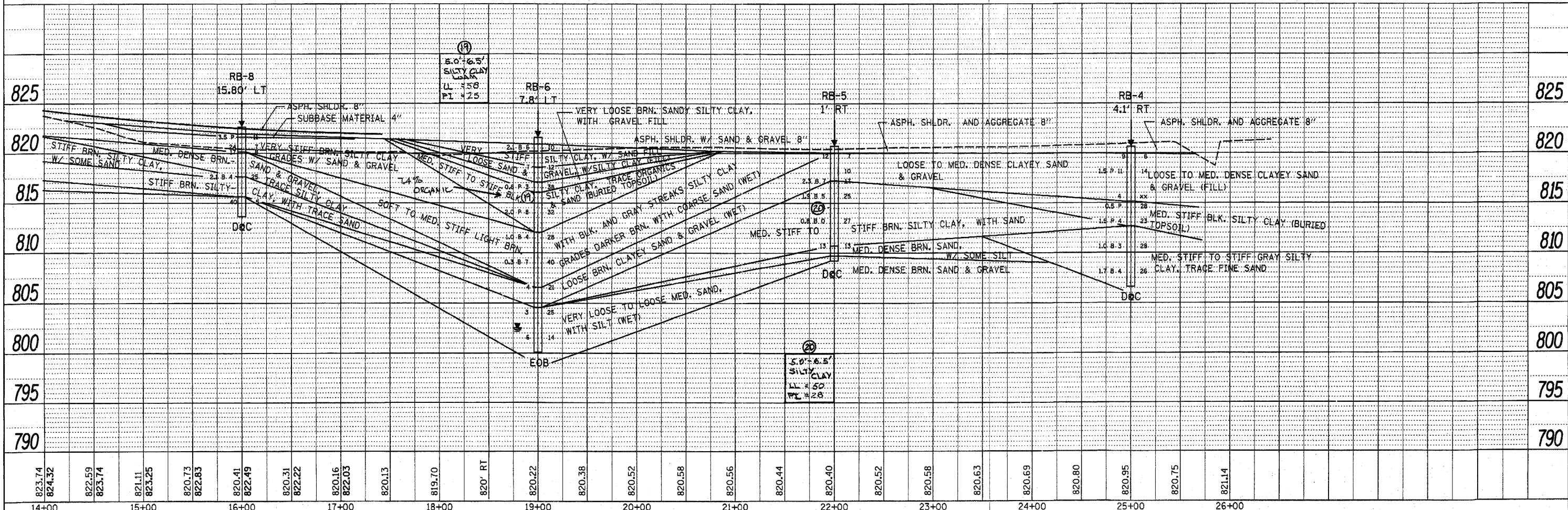
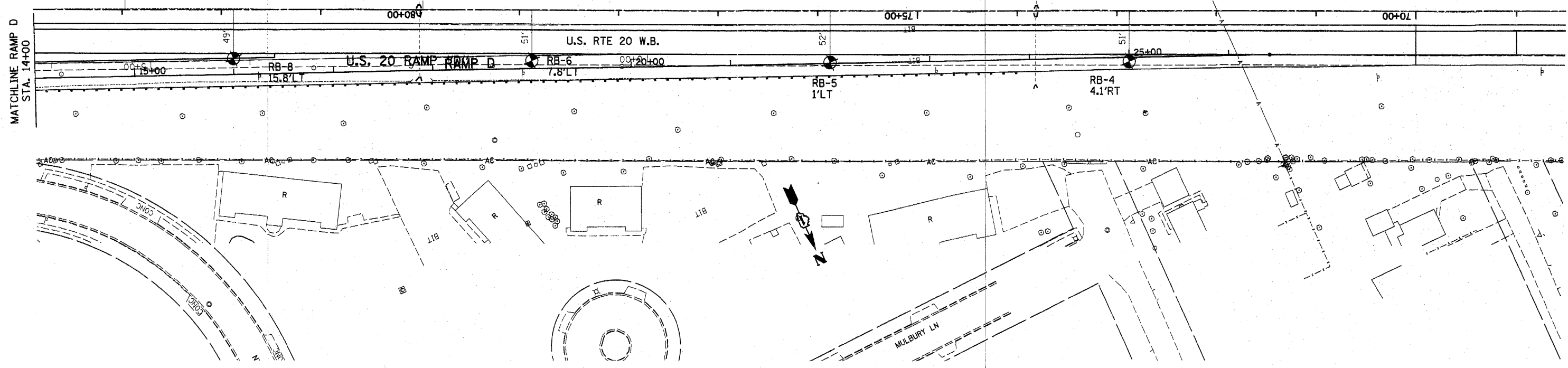


DATE	
BY	
SURVEYED	
PLAN	
NOTE BOOK	
NO.	
ALIGNMENT CHECKED	
RT. OF WAY CHECKED	
FIELD FILE NAME	

DATE	
BY	
SURVEYED	
PROFILE	
NOTE BOOK	
NO.	
GRADES CHECKED	
STRUCTURE NOTATIONS CHECKED	



823.74	824.32	822.59	823.74	821.11	823.25	820.73	822.83	820.41	822.49	820.31	822.22	820.16	822.03	820.13	819.70	820' RT	820.22	820.38	820.52	820.58	820.56	820.44	820.40	820.52	820.58	820.63	820.69	820.80	820.95	820.75	821.14
14+00	15+00	16+00	17+00	18+00	19+00	20+00	21+00	22+00	23+00	24+00	25+00	26+00																			

FILE NAME =
 c:\p\work\p\dot\1\izekr-f\8161624\ht-Rep\Soila.dgn

USER NAME = 1izekr-f
 DESIGNED -
 DRAWN -
 CHECKED -
 DATE -

REVISIED -
 REVISIED -
 REVISIED -
 REVISIED -

REVISIED -
 REVISIED -
 REVISIED -
 REVISIED -

STATE OF ILLINOIS
 DEPARTMENT OF TRANSPORTATION

SOILS PLAN AND PROFILE
 RAMP "D" (U.S. RTE. 20)

F.A.P. RTE.	SECTION	COUNTY	TOTAL SHEETS	SHEET NO.
345	8R-HB-2-BY-1	KANE	434	71
CONTRACT NO. 60K90				
ILLINOIS FED. AID PROJECT				