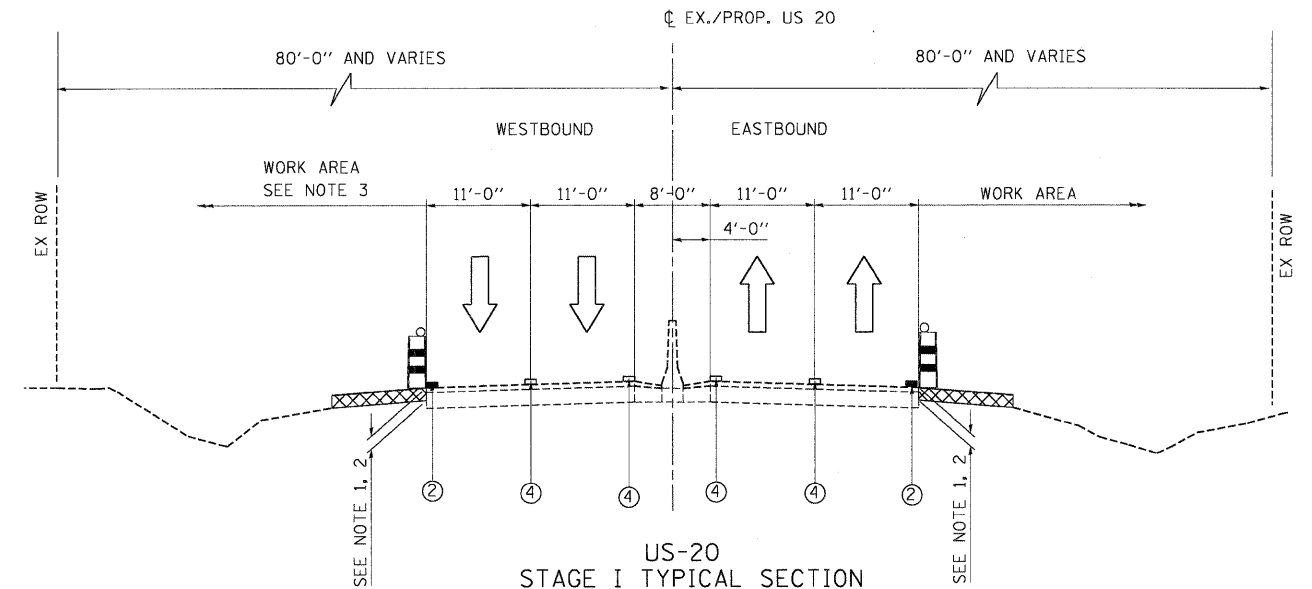
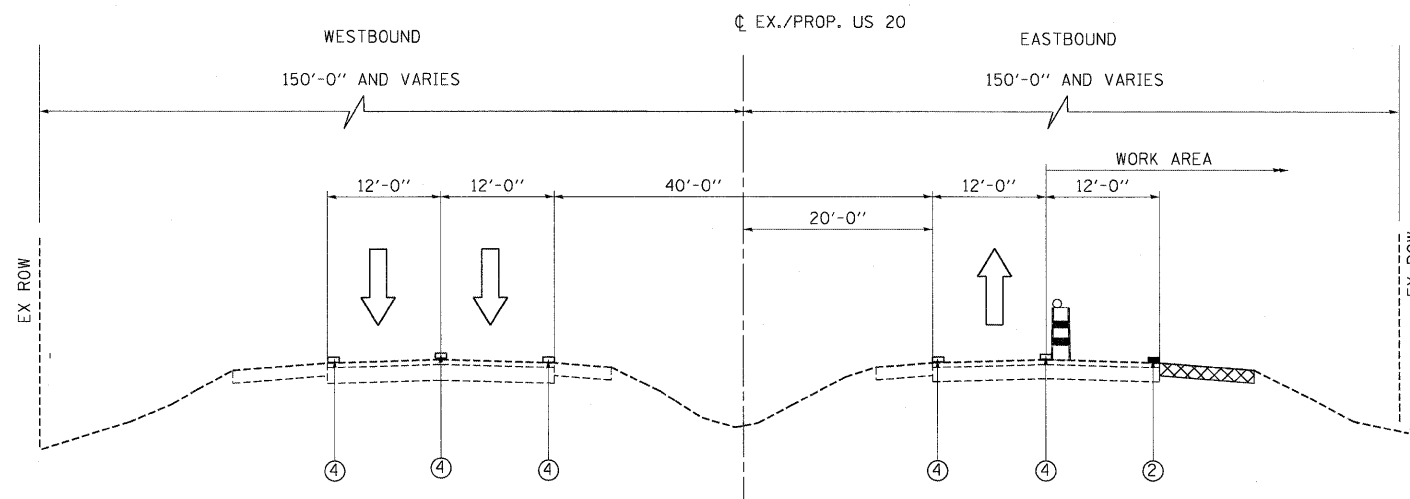


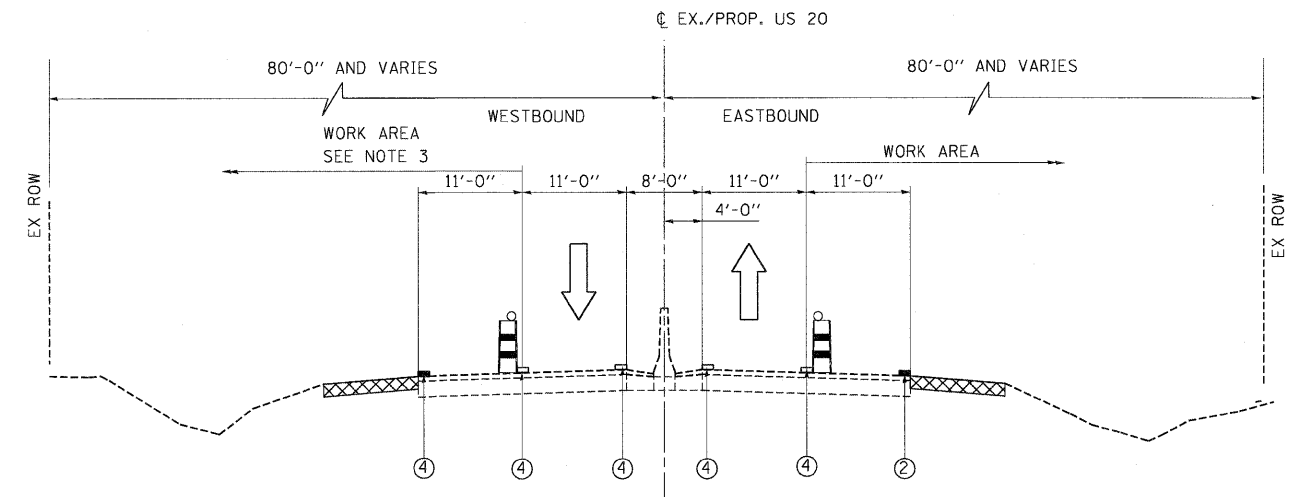
US-20
STAGE I TYPICAL SECTION
WEST OF MCLEAN BLVD.
SHOULDER CLOSURE



US-20
STAGE I TYPICAL SECTION
EAST OF MCLEAN BLVD.
SHOULDER CLOSURE



US-20
STAGE I TYPICAL SECTION
WEST OF MCLEAN BLVD.
SINGLE LANE NIGHT TIME LANE CLOSURE



US-20
STAGE I TYPICAL SECTION
EAST OF MCLEAN BLVD.
SINGLE LANE NIGHT TIME LANE CLOSURE

NOTES:

1. THE DROP-OFF HEIGHT AT THE EDGE OF PAVEMENT SHOULD BE LESS THAN OR EQUAL TO 12 INCH WHEN THE TRAFFIC IS ADJACENT TO THE DROP OFF LOCATION. IF THE DROP-OFF HEIGHT IS GREATER THAN 12 INCH AND LESS THAN OR EQUAL TO 18 INCHES THEN CONSTRUCTION SHALL BE LIMITED TO 0.5 MILE OR LESS THAN 48 HOURS.
2. CHANNELIZING DEVICES ALONG US ROUTE 20 SHALL BE PLACED AT THE DROP-OFF LOCATIONS TO PRESERVE LANE WIDTH DURING DAY TIME. THE REFLECTIVE AREA SHALL BE RAISED TO THE ELEVATION ABOVE TRAVELING LANE OR SHOULDER PROFILE AS REQUIRED BY STANDARD 701901.
3. FOR THE LIMITS OF WESTBOUND OUTSIDE SHOULDER RECONSTRUCTION AND RESURFACING LIMITS, REFER TO ROADWAY PLANS.

LEGEND

- TEMPORARY CONCRETE BARRIER
- VERTICAL PANELS WITH FLASHING LIGHT
- DRUM OR BARRICADE WITH FLASHING LIGHT (SEE NOTE 2)
- TRAFFIC FLOW
- TEMPORARY PAVEMENT
- REMOVAL

- ① WET REFLECTIVE TEMP. TAPE TYPE III - LINE 4" YELLOW
- ② WET REFLECTIVE TEMP. TAPE TYPE III - LINE 4" WHITE
- ③ WET REFLECTIVE TEMP. TAPE TYPE III - LINE 4" WHITE (10' DASH - 30' SKIP)
- ④ EXISTING PVMT. MARKING

I:\60K90\XSCST1.DGN ... I:\60K90\BORDER.DGN ... I:\60K90\LEGEND.DGN
 I:\60K90\PARTS\PARTS.DGN ... I:\60K90\PARTS\PARTS.DGN ... I:\60K90\PARTS\PARTS.DGN
 I:\60K90\PARTS\PARTS.DGN ... I:\60K90\PARTS\PARTS.DGN ... I:\60K90\PARTS\PARTS.DGN

FILE NAME =	USER NAME = #USER#	DESIGNED - MM	REVISED -	STATE OF ILLINOIS DEPARTMENT OF TRANSPORTATION FAP ROUTE 345 / US ROUTE 20	STAGING AND TRAFFIC CONTROL U.S. ROUTE 20 TYPICAL SECTIONS STAGE I		F.A.P. RTE.	SECTION	COUNTY	TOTAL SHEETS	SHEET NO.	
#FILE#		DRAWN - MM	REVISED -		SCALE: 1"=10'	SHEET NO. OF SHEETS	STA. TO STA.	345	8R-HB-2-BY-1	KANE	434	77
PLOT SCALE = #SCALE#		CHECKED - PB	REVISED -									
PLOT DATE = #DATE#		DATE - 05/18/11	REVISED -									
							CONTRACT NO. 60K90 FED. ROAD DIST. NO. ILLINOIS FED. AID PROJECT					

