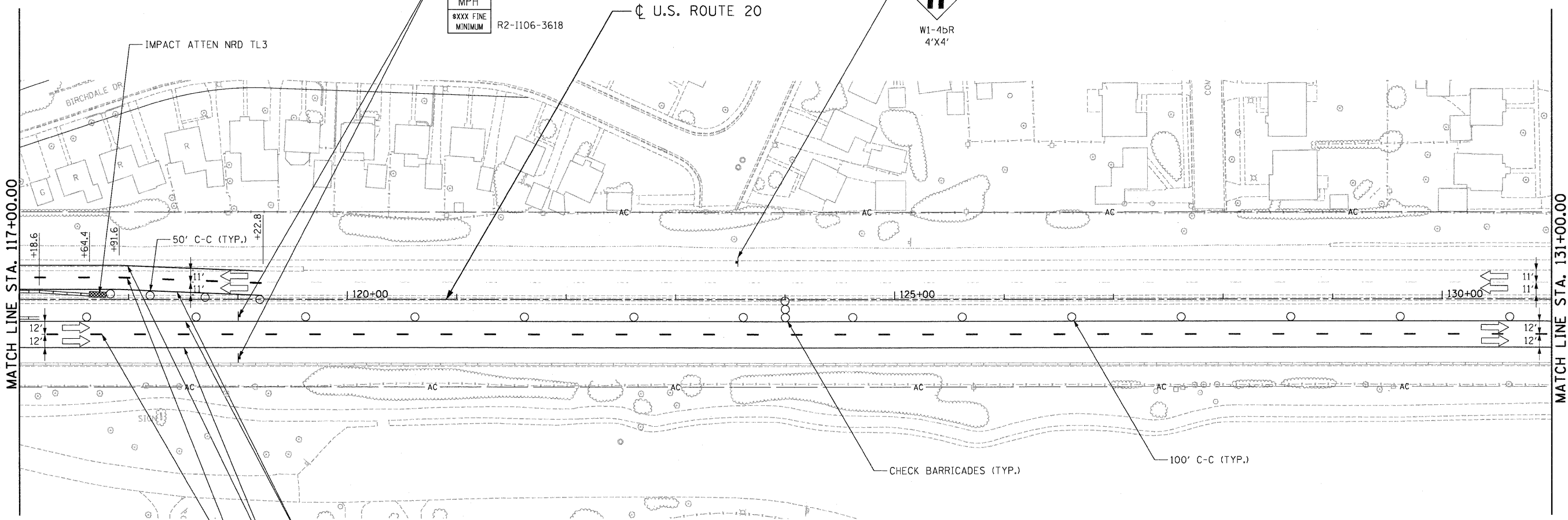




WORK ZONE	W2-1115(0)-3618
SPEED LIMIT	R2-1-3648
45 MPH	
XXXX FINE MINIMUM	R2-1106-3618



**LEGEND**

- WORK AREA
- IMPACT ATTENUATOR
- TEMPORARY CONCRETE BARRIER
- TYPE II BARRICADES OR DRUMS WITH STEADY BURN MONODIRECTIONAL LIGHT (AT SPECIFIED SPACING)
- TRAFFIC FLOW
- SIGN
- VERTICAL PANELS WITH STEADY BURNING LIGHTS (AT SPECIFIED SPACING)
- ARROW BOARD
- TYPE III BARRICADE
- DIRECTION INDICATOR BARRICADE
- TYPE B MONODIRECTIONAL FLASHING LIGHT
- TEMPORARY PAVEMENT, INTERSTATE

- WET REF TEM TAPE T3 4 (SOLID, YELLOW)
- WET REF TEM TAPE T3 4 (SOLID, WHITE)
- WET REF TEM TAPE T3 4 (DASH 10' - SKIP 30', WHITE)

\D:\6099\BORDER\01.DGN, \D:\MASTER\ALIGNMENT.DGN, \D:\6099\BORDER\02.DGN, \D:\6099\BORDER\03.DGN, \D:\6099\BORDER\04.DGN, \D:\6099\BORDER\05.DGN, \D:\6099\BORDER\06.DGN, \D:\6099\BORDER\07.DGN, \D:\6099\BORDER\08.DGN, \D:\6099\BORDER\09.DGN, \D:\6099\BORDER\10.DGN, \D:\6099\BORDER\11.DGN, \D:\6099\BORDER\12.DGN, \D:\6099\BORDER\13.DGN, \D:\6099\BORDER\14.DGN, \D:\6099\BORDER\15.DGN, \D:\6099\BORDER\16.DGN, \D:\6099\BORDER\17.DGN, \D:\6099\BORDER\18.DGN, \D:\6099\BORDER\19.DGN, \D:\6099\BORDER\20.DGN, \D:\6099\BORDER\21.DGN, \D:\6099\BORDER\22.DGN, \D:\6099\BORDER\23.DGN, \D:\6099\BORDER\24.DGN, \D:\6099\BORDER\25.DGN, \D:\6099\BORDER\26.DGN, \D:\6099\BORDER\27.DGN, \D:\6099\BORDER\28.DGN, \D:\6099\BORDER\29.DGN, \D:\6099\BORDER\30.DGN, \D:\6099\BORDER\31.DGN, \D:\6099\BORDER\32.DGN, \D:\6099\BORDER\33.DGN, \D:\6099\BORDER\34.DGN, \D:\6099\BORDER\35.DGN, \D:\6099\BORDER\36.DGN, \D:\6099\BORDER\37.DGN, \D:\6099\BORDER\38.DGN, \D:\6099\BORDER\39.DGN, \D:\6099\BORDER\40.DGN, \D:\6099\BORDER\41.DGN, \D:\6099\BORDER\42.DGN, \D:\6099\BORDER\43.DGN, \D:\6099\BORDER\44.DGN, \D:\6099\BORDER\45.DGN, \D:\6099\BORDER\46.DGN, \D:\6099\BORDER\47.DGN, \D:\6099\BORDER\48.DGN, \D:\6099\BORDER\49.DGN, \D:\6099\BORDER\50.DGN, \D:\6099\BORDER\51.DGN, \D:\6099\BORDER\52.DGN, \D:\6099\BORDER\53.DGN, \D:\6099\BORDER\54.DGN, \D:\6099\BORDER\55.DGN, \D:\6099\BORDER\56.DGN, \D:\6099\BORDER\57.DGN, \D:\6099\BORDER\58.DGN, \D:\6099\BORDER\59.DGN, \D:\6099\BORDER\60.DGN, \D:\6099\BORDER\61.DGN, \D:\6099\BORDER\62.DGN, \D:\6099\BORDER\63.DGN, \D:\6099\BORDER\64.DGN, \D:\6099\BORDER\65.DGN, \D:\6099\BORDER\66.DGN, \D:\6099\BORDER\67.DGN, \D:\6099\BORDER\68.DGN, \D:\6099\BORDER\69.DGN, \D:\6099\BORDER\70.DGN, \D:\6099\BORDER\71.DGN, \D:\6099\BORDER\72.DGN, \D:\6099\BORDER\73.DGN, \D:\6099\BORDER\74.DGN, \D:\6099\BORDER\75.DGN, \D:\6099\BORDER\76.DGN, \D:\6099\BORDER\77.DGN, \D:\6099\BORDER\78.DGN, \D:\6099\BORDER\79.DGN, \D:\6099\BORDER\80.DGN, \D:\6099\BORDER\81.DGN, \D:\6099\BORDER\82.DGN, \D:\6099\BORDER\83.DGN, \D:\6099\BORDER\84.DGN, \D:\6099\BORDER\85.DGN, \D:\6099\BORDER\86.DGN, \D:\6099\BORDER\87.DGN, \D:\6099\BORDER\88.DGN, \D:\6099\BORDER\89.DGN, \D:\6099\BORDER\90.DGN, \D:\6099\BORDER\91.DGN, \D:\6099\BORDER\92.DGN, \D:\6099\BORDER\93.DGN, \D:\6099\BORDER\94.DGN, \D:\6099\BORDER\95.DGN, \D:\6099\BORDER\96.DGN, \D:\6099\BORDER\97.DGN, \D:\6099\BORDER\98.DGN, \D:\6099\BORDER\99.DGN, \D:\6099\BORDER\100.DGN

FILE NAME =	USER NAME = #USER#	DESIGNED - MM	REVISED -
#FILE#		DRAWN - MM	REVISED -
	PLOT SCALE = #SCALE#	CHECKED - PB	REVISED -
	PLOT DATE = #DATE#	DATE - 05/18/11	REVISED -

**STATE OF ILLINOIS**  
**DEPARTMENT OF TRANSPORTATION**  
 FAP ROUTE 345 / US ROUTE 20

<b>STAGING AND TRAFFIC CONTROL</b>			
<b>U.S. ROUTE 20</b>			
<b>STAGE II</b>			
SCALE: 1"=50'	SHEET NO.	OF SHEETS	STA. 117+00.00 TO STA. 131+00.00

F.A.P. RTE.	SECTION	COUNTY	TOTAL SHEETS	SHEET NO.
345	BR-HB-2-BY-1	KANE	434	117
FED. ROAD DIST. NO.			ILLINOIS FED. AID PROJECT	
			CONTRACT NO. 60K90	

