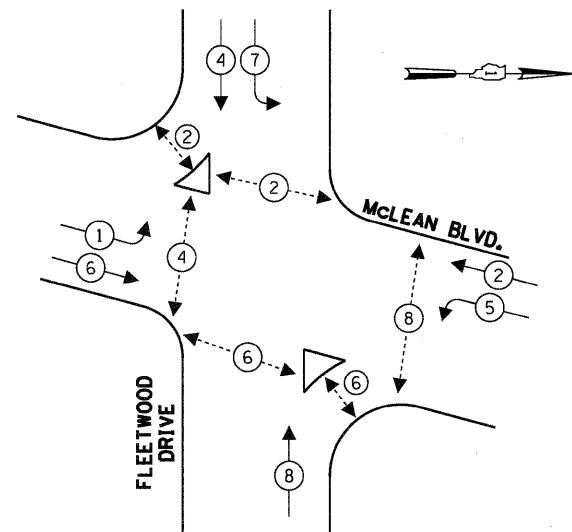
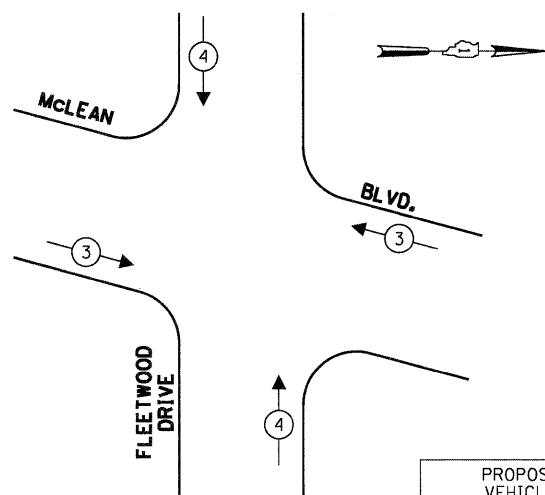


**CONTROLLER SEQUENCE**

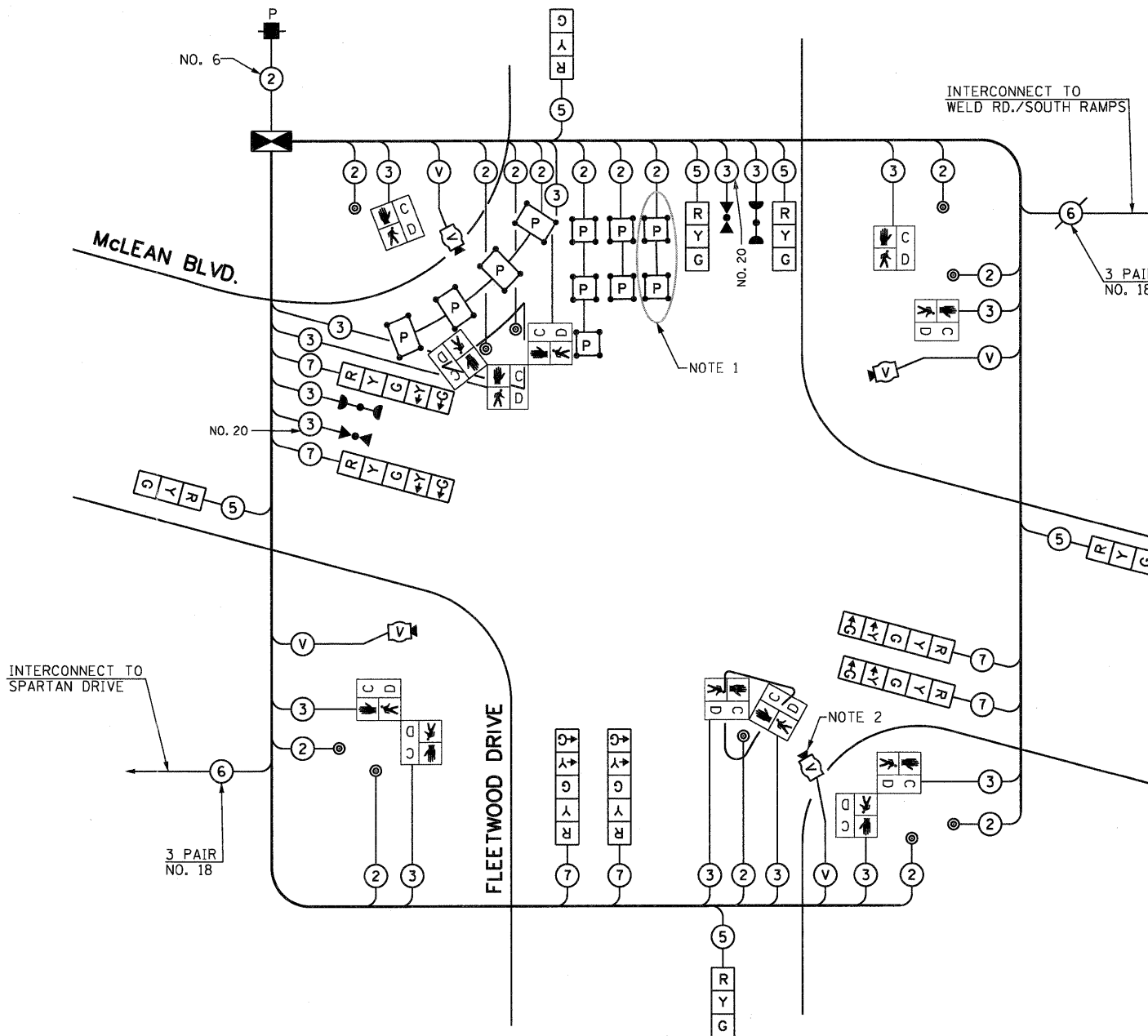


TEMPORARY PHASE DESIGNATION DIAGRAM

**EMERGENCY VEHICLE PREEMPTION SEQUENCE**



PROPOSED EMERGENCY VEHICLE PREEMPTIONS		
EMERGENCY VEHICLE PREEMPTOR	3	4
MOVEMENT	←→	↑↓



**TEMPORARY CABLE PLAN**

(NOT TO SCALE)

NOTE 1: THE DETECTOR LOOPS IN THE WESTBOUND LANE SHALL NOT BE ACTIVATED UNTIL THE PERMANENT SIGNAL INSTALLATION IS PUT IN OPERATION. THE DETECTOR LOOP CABLES, FOR THE LOOPS TO BE ACTIVATED, SHALL BE CONNECTED INTO THE TEMPORARY CONTROLLER. THE 1-PAIR CABLES FOR THE DETECTOR LOOPS SHALL BE IN CONDUITS AS SHOWN IN THE DETAIL ON SHEET 157.

NOTE 2: THE VIDEO DETECTION CAMERA FOR THE WEST APPROACH OF THE INTERSECTION SHALL BE DISABLED UPON ACTUATION OF THE DETECTOR LOOPS FOR THE WEST APPROACH.

THE TRAFFIC SIGNAL CONTROL EQUIPMENT FOR THIS PROJECT SHALL BE "MULTISONICS 820A" TO MATCH THE EXISTING ADJACENT SYSTEM.

I.D.O.T. TRAFFIC SIGNAL INSTALLATION ELECTRICAL SERVICE REQUIREMENTS					TOTAL WATTAGE
TYPE	NO LAMPS	WATTAGE	%OPERATION		
		INCAND.	LED		
SIGNAL (RED)	12	135	17	0.50	102
(YELLOW)	12	135	25	0.25	75
(GREEN)	12	135	15	0.25	45
ARROW	12	135	12	0.10	14.4
PED. SIGNAL	12	90	25	1.00	300
CONTROLLER	1	100	100	1.00	100
ILLUM. SIGN				0.05	
VIDEO SYSTEM	1	150		1.00	150
FLASHER				0.50	
ENERGY COSTS TO:				TOTAL =	786.4
CITY OF ELGIN 150 DEXTER COURT ELGIN, ILLINOIS 60120-5570					
ENERGY SUPPLY CONTACT: ELLIE SARALLO PHONE: (630) 424 5124 COMPANY: COMMONWEALTH EDISON					

FILE NAME =	USER NAME = #USER#	DESIGNED - PKG	REVISED -
#FILE#		DRAWN - MAA, EA	REVISED -
	PLOT SCALE = #SCALE#	CHECKED - PKG	REVISED -
	PLOT DATE = #DATE#	DATE - 5/18/2011	REVISED -

STATE OF ILLINOIS  
DEPARTMENT OF TRANSPORTATION

TEMPORARY CABLE PLAN			
AFTER THE WEST LEG OF FLEETWOOD DRIVE IS BUILT			
MCLEAN BOULEVARD AT FLEETWOOD DRIVE (SHEET 6 OF 6)			
SCALE:	SHEET NO.	OF SHEETS	STA. TO STA.

F.A.P. RTE.	SECTION	COUNTY	TOTAL SHEETS	SHEET NO.
345	8R-HB-2-BY-1	KANE	434	222
FED. ROAD DIST. NO. - ILLINOIS FED. AID PROJECT				CONTRACT NO. 60K90