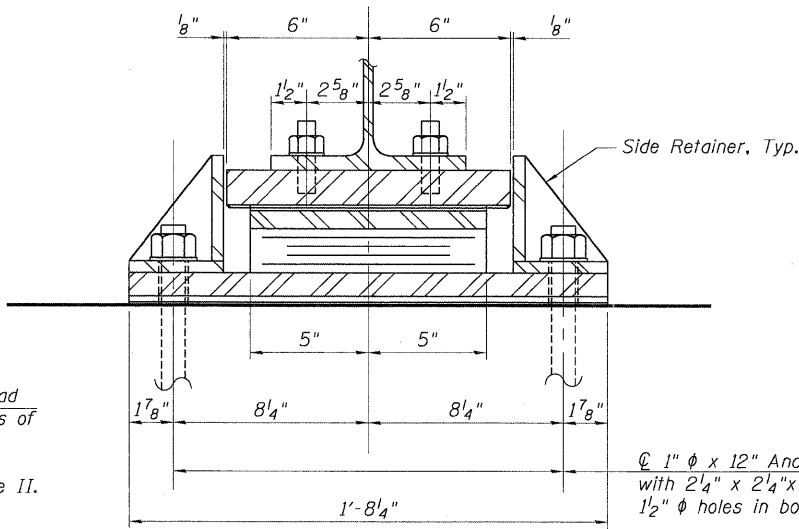
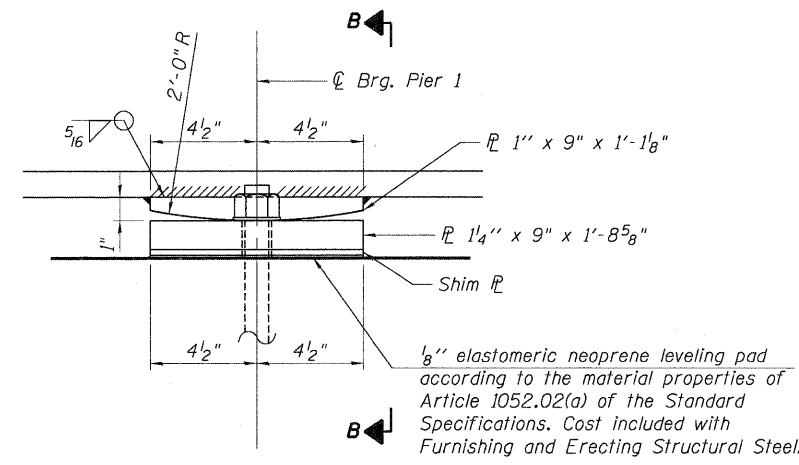


**ELEVATION AT E. ABUT.**  
(Looking South)



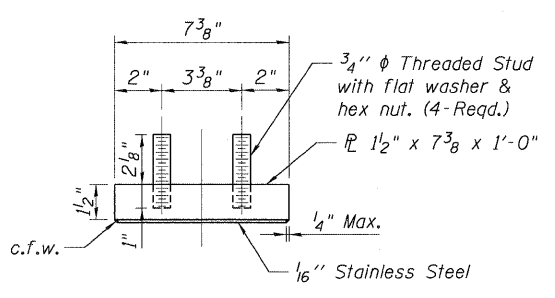
**SECTION A-A**



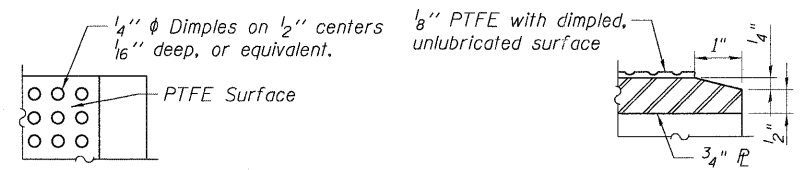
**ELEVATION AT PIER 1**  
**LOW PROFILE FIXED BEARINGS**

**TYPE II ELASTOMERIC EXPANSION BEARINGS**

(2 Thus)

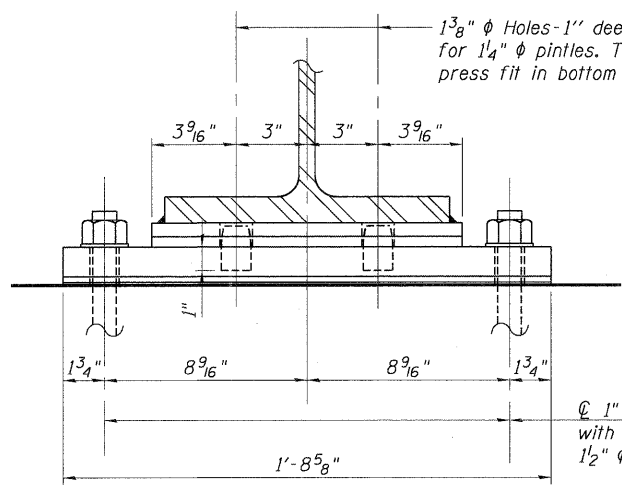


**TOP BEARING ASSEMBLY**

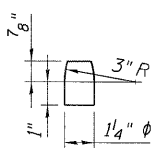


**PLAN - PTFE SURFACE**

**SECTION THRU PTFE**



**SECTION B-B**



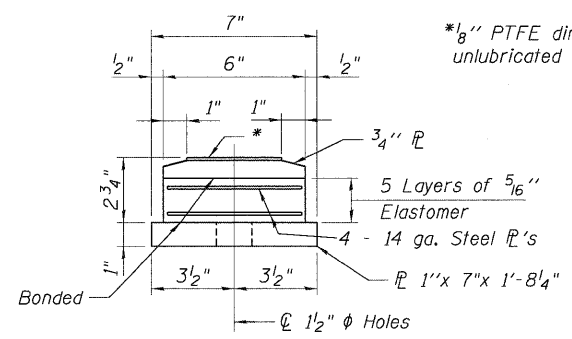
**PINTLE**

**BILL OF MATERIAL**

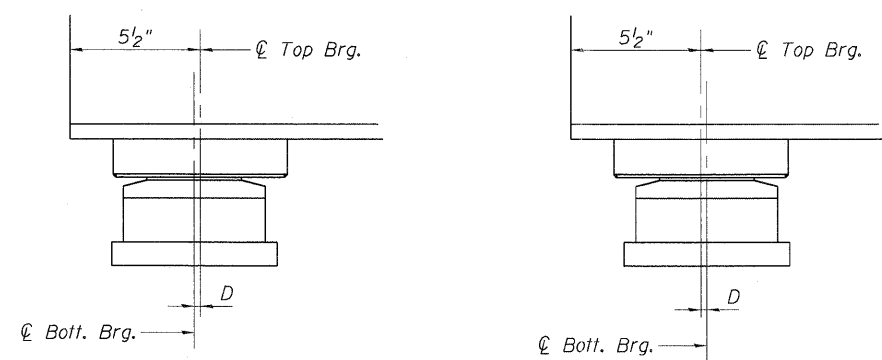
Item	Unit	Total
Elastomeric Bearing Assembly, Type II	Each	2
Anchor Bolts, 1"	Each	8

**Notes:**

- See Sht. S-18 for side retainer details.
- Anchor bolts shall be ASTM F1554 all-thread (or an Engineer-approved alternate material) of the grade and diameter specified. ASTM A307 Grade C anchor bolts may be used in lieu of ASTM F1554 Grade 36 (Fy = 36ksi). The corresponding specified grade of AASHTO M314 anchor bolts may be used in lieu of ASTM F1554.
- Anchor bolts at fixed bearings may be either cast in place or installed in holes drilled after the supported member is in place.
- Anchor bolts for Type II bearings shall be placed in holes drilled in the concrete through holes in the bottom bearing plate after members are in place. Side retainers shall be placed after bolts are installed.
- Drilled and set anchor bolts shall be installed according to Article 521.06 of the Standard Specifications.
- Side retainers and other steel members required for the elastomeric expansion bearing assembly shall be included in the cost of Elastomeric Bearing Assembly, Type II.
- The 1/8" PTFE sheet shall be bonded directly to the top steel plate with a two-component, medium viscosity epoxy resin, conforming to the requirements of the Federal Specification MMM-A-134, Type I. The bond agent shall be applied on the full area of the contact surfaces.
- Bonding of 1/8" PTFE sheet during vulcanizing process will be permitted provided the process and method of adjusting assembly height is approved by the Engineer.
- The structural steel plates of the Bearing Assembly shall conform to the requirements of AASHTO M 270 Grade 50.
- Two 1/8" adjusting shims shall be provided for each bearing in addition to all other plates and placed as shown on bearing details.
- Fixed bearing assemblies, including pintles, shim plates, adjusting shims and elastomeric neoprene leveling pads, included in Furnishing and Erecting Structural Steel.



**BOTTOM BEARING ASSEMBLY**



**SETTING ANCHOR BOLTS AT EXPANSION BEARINGS**

D = 1/8" per each 100' of expansion for every 15° temp. change from the normal temp. of 50°F.

5-13-2011 15:27:59 HAYMARZ \NF5-004\4\MM\VAULT\J.D. FRANS. 07.2202\21379-001\STRUCT\CAD\60K\90 04-500003\SHEET 04500003-60K\90-002-BEARING.SHT.DGN  
 5-13-2011 15:27:59 HAYMARZ \NF5-004\4\MM\VAULT\J.D. FRANS. 07.2202\21379-001\STRUCT\CAD\60K\90 04-500003\SHEET 04500003-60K\90-002-BEARING.SHT.DGN