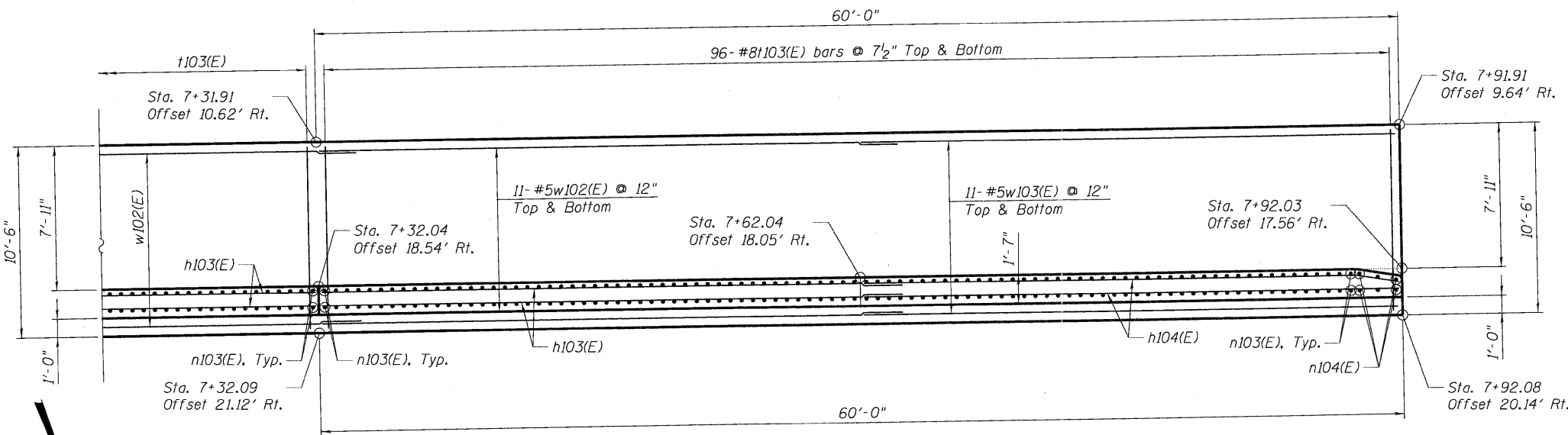
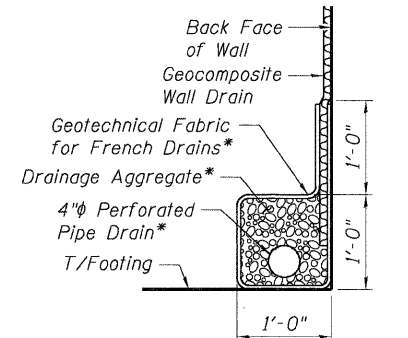


**ELEVATION**

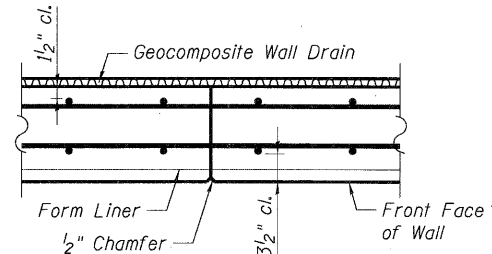


**PLAN**

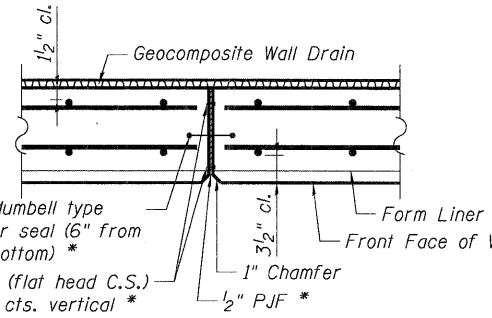


**PIPE UNDERDRAIN DETAIL**

\* Included in the cost of Pipe Underdrains for Structures.

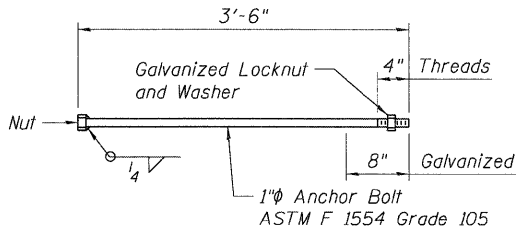


**CONSTRUCTION JOINT DETAIL**



**EXPANSION JOINT DETAIL**

\* Cost included with Concrete Structures.



**ANCHOR BOLT DETAILS**

(For Type 5 Traffic Barrier Terminal connection)

**Note:**  
See Sht. RW10-2 for notes.

FILE NAME: \\V:\S\1010-6069-RET WALL.DGN  
 USER: RW10-6  
 DESIGNED: MDB  
 DRAWN: MDB  
 CHECKED: PK  
 DATE: 05/18/11  
 REVISIONS:  
 REVISION NO. | DATE | BY | DESCRIPTION  
 1 | 05/18/11 | PK |  
 2 | 05/18/11 | RW10-6 |  
 3 | 05/18/11 | RW10-6 |  
 4 | 05/18/11 | RW10-6 |  
 5 | 05/18/11 | RW10-6 |  
 6 | 05/18/11 | RW10-6 |  
 7 | 05/18/11 | RW10-6 |  
 8 | 05/18/11 | RW10-6 |  
 9 | 05/18/11 | RW10-6 |  
 10 | 05/18/11 | RW10-6 |  
 11 | 05/18/11 | RW10-6 |  
 12 | 05/18/11 | RW10-6 |  
 13 | 05/18/11 | RW10-6 |  
 14 | 05/18/11 | RW10-6 |  
 15 | 05/18/11 | RW10-6 |  
 16 | 05/18/11 | RW10-6 |  
 17 | 05/18/11 | RW10-6 |  
 18 | 05/18/11 | RW10-6 |  
 19 | 05/18/11 | RW10-6 |  
 20 | 05/18/11 | RW10-6 |  
 21 | 05/18/11 | RW10-6 |  
 22 | 05/18/11 | RW10-6 |  
 23 | 05/18/11 | RW10-6 |  
 24 | 05/18/11 | RW10-6 |  
 25 | 05/18/11 | RW10-6 |  
 26 | 05/18/11 | RW10-6 |  
 27 | 05/18/11 | RW10-6 |  
 28 | 05/18/11 | RW10-6 |  
 29 | 05/18/11 | RW10-6 |  
 30 | 05/18/11 | RW10-6 |  
 31 | 05/18/11 | RW10-6 |  
 32 | 05/18/11 | RW10-6 |  
 33 | 05/18/11 | RW10-6 |  
 34 | 05/18/11 | RW10-6 |  
 35 | 05/18/11 | RW10-6 |  
 36 | 05/18/11 | RW10-6 |  
 37 | 05/18/11 | RW10-6 |  
 38 | 05/18/11 | RW10-6 |  
 39 | 05/18/11 | RW10-6 |  
 40 | 05/18/11 | RW10-6 |  
 41 | 05/18/11 | RW10-6 |  
 42 | 05/18/11 | RW10-6 |  
 43 | 05/18/11 | RW10-6 |  
 44 | 05/18/11 | RW10-6 |  
 45 | 05/18/11 | RW10-6 |  
 46 | 05/18/11 | RW10-6 |  
 47 | 05/18/11 | RW10-6 |  
 48 | 05/18/11 | RW10-6 |  
 49 | 05/18/11 | RW10-6 |  
 50 | 05/18/11 | RW10-6 |  
 51 | 05/18/11 | RW10-6 |  
 52 | 05/18/11 | RW10-6 |  
 53 | 05/18/11 | RW10-6 |  
 54 | 05/18/11 | RW10-6 |  
 55 | 05/18/11 | RW10-6 |  
 56 | 05/18/11 | RW10-6 |  
 57 | 05/18/11 | RW10-6 |  
 58 | 05/18/11 | RW10-6 |  
 59 | 05/18/11 | RW10-6 |  
 60 | 05/18/11 | RW10-6 |  
 61 | 05/18/11 | RW10-6 |  
 62 | 05/18/11 | RW10-6 |  
 63 | 05/18/11 | RW10-6 |  
 64 | 05/18/11 | RW10-6 |  
 65 | 05/18/11 | RW10-6 |  
 66 | 05/18/11 | RW10-6 |  
 67 | 05/18/11 | RW10-6 |  
 68 | 05/18/11 | RW10-6 |  
 69 | 05/18/11 | RW10-6 |  
 70 | 05/18/11 | RW10-6 |  
 71 | 05/18/11 | RW10-6 |  
 72 | 05/18/11 | RW10-6 |  
 73 | 05/18/11 | RW10-6 |  
 74 | 05/18/11 | RW10-6 |  
 75 | 05/18/11 | RW10-6 |  
 76 | 05/18/11 | RW10-6 |  
 77 | 05/18/11 | RW10-6 |  
 78 | 05/18/11 | RW10-6 |  
 79 | 05/18/11 | RW10-6 |  
 80 | 05/18/11 | RW10-6 |  
 81 | 05/18/11 | RW10-6 |  
 82 | 05/18/11 | RW10-6 |  
 83 | 05/18/11 | RW10-6 |  
 84 | 05/18/11 | RW10-6 |  
 85 | 05/18/11 | RW10-6 |  
 86 | 05/18/11 | RW10-6 |  
 87 | 05/18/11 | RW10-6 |  
 88 | 05/18/11 | RW10-6 |  
 89 | 05/18/11 | RW10-6 |  
 90 | 05/18/11 | RW10-6 |  
 91 | 05/18/11 | RW10-6 |  
 92 | 05/18/11 | RW10-6 |  
 93 | 05/18/11 | RW10-6 |  
 94 | 05/18/11 | RW10-6 |  
 95 | 05/18/11 | RW10-6 |  
 96 | 05/18/11 | RW10-6 |  
 97 | 05/18/11 | RW10-6 |  
 98 | 05/18/11 | RW10-6 |  
 99 | 05/18/11 | RW10-6 |  
 100 | 05/18/11 | RW10-6 |

FILE NAME: \\V:\S\1010-6069-RET WALL.DGN	USER NAME: RW10-6	DESIGNED: MDB	REVISED:	<b>STATE OF ILLINOIS</b> <b>DEPARTMENT OF TRANSPORTATION</b> US 20 OVER MCLEAN BOULEVARD	<b>WALL PLAN AND ELEVATION</b> <b>5 OF 5</b>	F.A.P. RTE. 345	SECTION 8R-HB-2-BY-1	COUNTY KANE	TOTAL SHEETS 434	SHEET NO. 276
SCALE: 1"=10'-0"	SCALE: 1"=10'-0"	CHECKED: PK	REVISED:			SN 045-W010	CONTRACT NO. 60K90			
DATE: 05/18/11	DATE: 05/18/11	DATE: 05/18/11	DATE: 05/18/11			FED. ROAD DIST. NO. 7	ILLINOIS FED. AID PROJECT			
TENG & ASSOCIATES, INC. ENGINEERS/ARCHITECTS/PLANNERS CHICAGO, ILLINOIS										