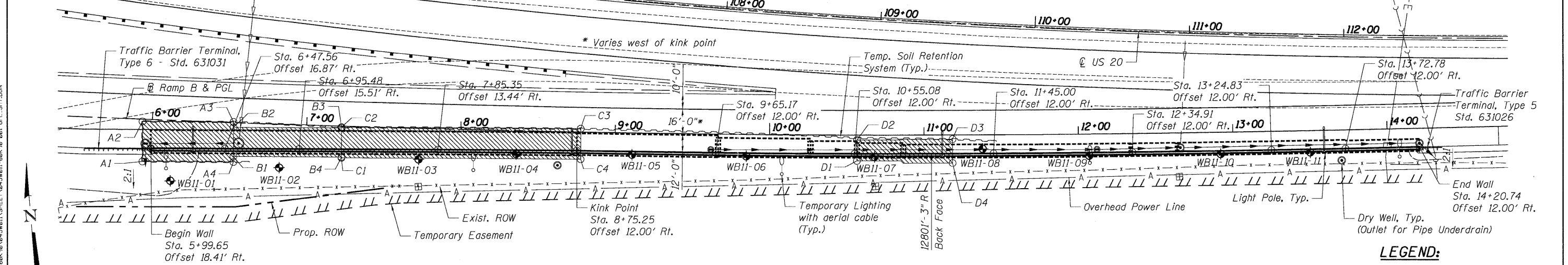
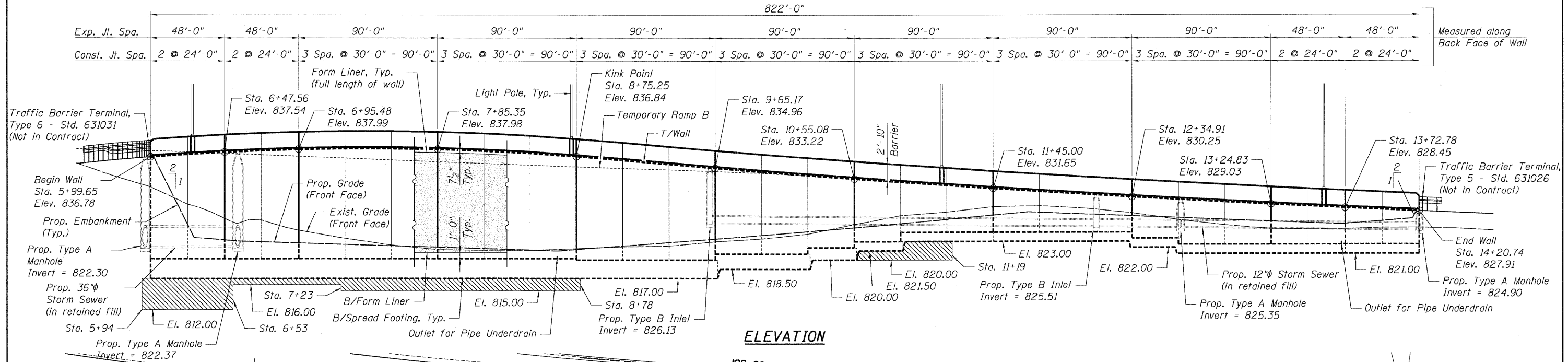


Benchmark: Top of iron rod near S. edge of shoulder of E.B. US-20 and near E.B. entrance ramp from McLean Boulevard, located 0.5' S. of the S. edge of shoulder and 29.9' E. of the center of easterly most guardrail post. Elev. 840.37 (NAVD 88)

Existing Structure: None.



LEGEND:

- A - Exist. Aerial Utility Line
- SS - Exist. Storm Sewer
- S - Prop. Storm Sewer
- O - Exist. Drainage Structure
- (O) - Prop. Drainage Structure
- T - Prop. Temporary Lighting
- P - Prop. Permanent Lighting
- [Hatched Area] - Removal and Disposal of Unsuitable Material for Structures

Notes:

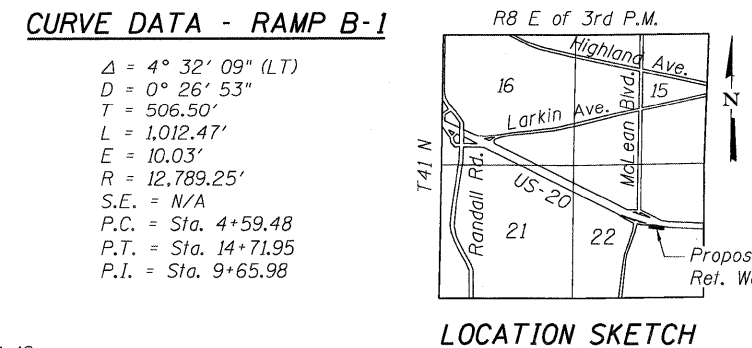
- Offsets are measured from @ Ramp B to the back face of wall.
- Wall backfilling will be staged, accommodating Temporary Ramp B pavement and traffic during Contract 60K90 Stage II MOT.
- Outlet pipe underdrain to dry wells as shown. See Drainage Plans for details of storm sewer, manholes, inlets and dry wells.

APPROVED
FOR STRUCTURAL ADEQUACY ONLY
D. Carl Pusey, JCD
ENGINEER OF BRIDGES AND STRUCTURES

STATE OF ILLINOIS
VINOD C. PATEL
REGISTERED STRUCTURAL ENGINEER
CHICAGO, ILL.
DATE: 5/16/2011
EXP.: 11/30/2012

LIMITS OF REMOVAL AND DISPOSAL OF UNSUITABLE MATERIAL FOR STRUCTURES

Location	Station	Offset	Location	Station	Offset
A1	5+94.45	27.18' Rt.	B1	6+53.20	21.78' Rt.
A2	5+93.57	1.44' Rt.	B2	6+52.64	3.04' Rt.
A3	6+52.53	0.46' Lt.	B3	7+22.60	1.14' Rt.
A4	6+53.30	25.28' Rt.	B4	7+23.06	19.89' Rt.
C1	7+23.07	20.39' Rt.	D1	10+56.58	16.58' Rt.
C2	7+22.59	0.64' Rt.	D2	10+56.58	3.08' Rt.
C3	8+77.57	2.20' Lt.	D3	11+18.52	2.58' Rt.
C4	8+77.82	17.55' Rt.	D4	11+18.52	18.08' Rt.



DESIGN SPECIFICATIONS

2002 AASHTO Standard Specifications for Highway Bridges, 17th Edition

DESIGN STRESSES

FIELD UNITS

f'c = 3.5 ksi
fy = 60 ksi (Reinforcement)

* Maximum Allowable Soil Bearing Pressure:
Sta. 5+99.65 - 13+24.83 = 4.0 ksf
Sta. 13+24.83 - 14+20.74 = 2.4 ksf

* Maximum Applied and Equivalent Uniform Soil Bearing Pressures are provided on Sht. RW11-12.

STATE OF ILLINOIS
DEPARTMENT OF TRANSPORTATION
US 20 OVER MCLEAN BOULEVARD

GENERAL PLAN AND ELEVATION

SCALE: SHEET NO. RW11-1 OF RW11-18 STA. 5+99.65 TO STA. 14+20.74

F.A.P. RTE.	SECTION	COUNTY	TOTAL SHEETS	SHEET NO.
345	8R-HB-2-BY-1	KANE	434	281
SN 045-W011		CONTRACT NO. 60K90		
FED. ROAD DIST. NO. 7 ILLINOIS FED. AID PROJECT				

W:\13-2011\51291815\45451815\132022\21379\001\STRUCT\CAD\60K90\045451815\SHEET\045451815-001.DWG
 W:\13-2011\51291815\45451815\132022\21379\001\STRUCT\CAD\60K90\045451815\SHEET\045451815-001.DWG
 W:\13-2011\51291815\45451815\132022\21379\001\STRUCT\CAD\60K90\045451815\SHEET\045451815-001.DWG
 W:\13-2011\51291815\45451815\132022\21379\001\STRUCT\CAD\60K90\045451815\SHEET\045451815-001.DWG
 W:\13-2011\51291815\45451815\132022\21379\001\STRUCT\CAD\60K90\045451815\SHEET\045451815-001.DWG
 W:\13-2011\51291815\45451815\132022\21379\001\STRUCT\CAD\60K90\045451815\SHEET\045451815-001.DWG
 W:\13-2011\51291815\45451815\132022\21379\001\STRUCT\CAD\60K90\045451815\SHEET\045451815-001.DWG
 W:\13-2011\51291815\45451815\132022\21379\001\STRUCT\CAD\60K90\045451815\SHEET\045451815-001.DWG
 W:\13-2011\51291815\45451815\132022\21379\001\STRUCT\CAD\60K90\045451815\SHEET\045451815-001.DWG
 W:\13-2011\51291815\45451815\132022\21379\001\STRUCT\CAD\60K90\045451815\SHEET\045451815-001.DWG
 W:\13-2011\51291815\45451815\132022\21379\001\STRUCT\CAD\60K90\045451815\SHEET\045451815-001.DWG

FILE NAME = USER NAME = #USERS#
DESIGNED - MDB REVISIONS -
DRAWN - MDB REVISIONS -
CHECKED - PK REVISIONS -
DATE - 05/18/11 REVISIONS -

TENG & ASSOCIATES, INC.
ENGINEERS/ARCHITECTS/PLANNERS
CHICAGO, ILLINOIS