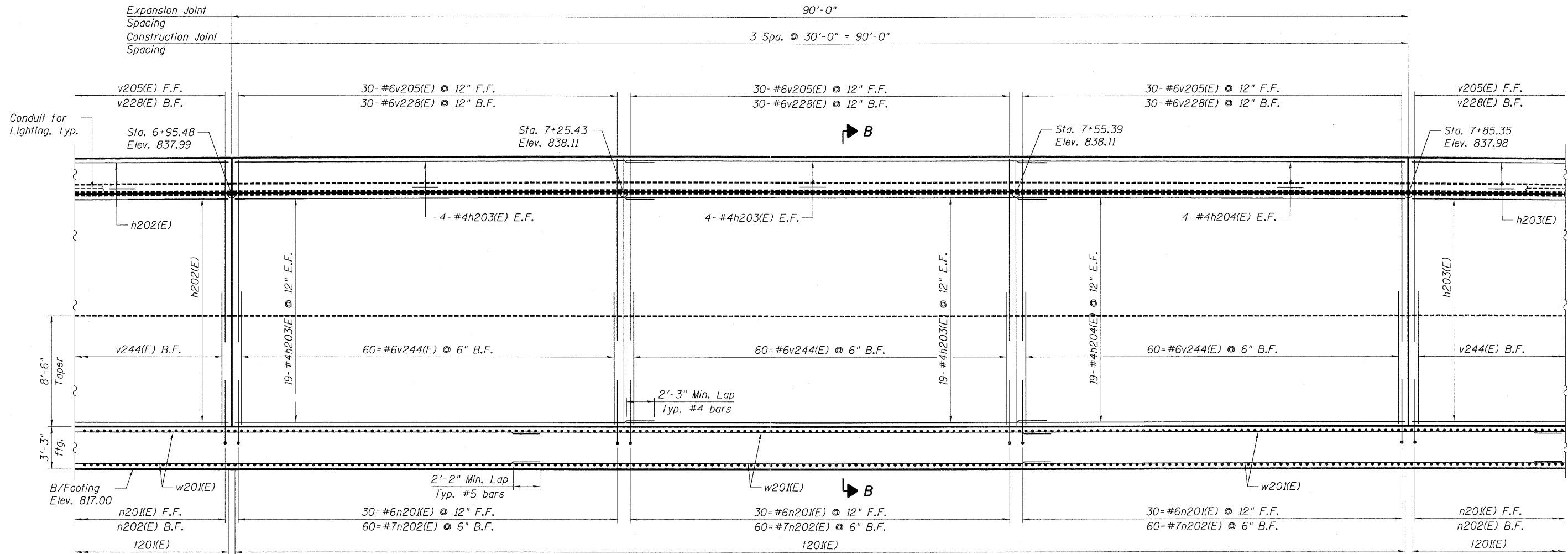
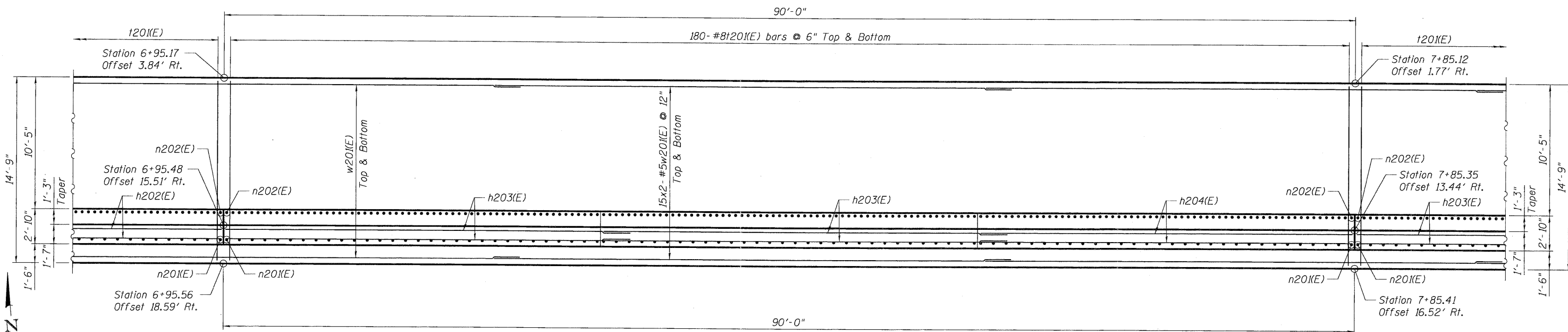


822'-0" End to End of Wall



ELEVATION



PLAN

Note:  
See Sht. RW11-11 for notes.

\045W011-60K90-002-RET WALL.DGN, \ALLSNUM-60K90-001-BORDERLGN  
 5-13-2011, 15:29:22  
 HAYMARZ \AFS-004\4\AMVAUL\J.D. TRANS. 07\2222\21379-00A\STRUCT\CAD\60K90-045W011\SHEET 045W011-60K90-002-RET WALL.SHT.DGN

FILE NAME =	USER NAME = #USER#	DESIGNED - MDB	REVISED -	<b>STATE OF ILLINOIS</b> <b>DEPARTMENT OF TRANSPORTATION</b> US 20 OVER MCLEAN BOULEVARD	<b>WALL PLAN AND ELEVATION</b> 2 OF 9		F.A.P. RTE.	SECTION	COUNTY	TOTAL SHEETS	SHEET NO.		
#FILE#		DRAWN - MDB	REVISED -		SCALE:	SHEET NO. RW11-4	OF RW11-18	STA. 5+99.65 TO STA. 14+20.74	345	8R-HB-2-BY-1	KANE	434	284
		CHECKED - PK	REVISED -		SN 045-W011 CONTRACT NO. 60K90								
		DATE - 05/18/11	REVISED -		FED. ROAD DIST. NO. 7 ILLINOIS FED. AID PROJECT								

