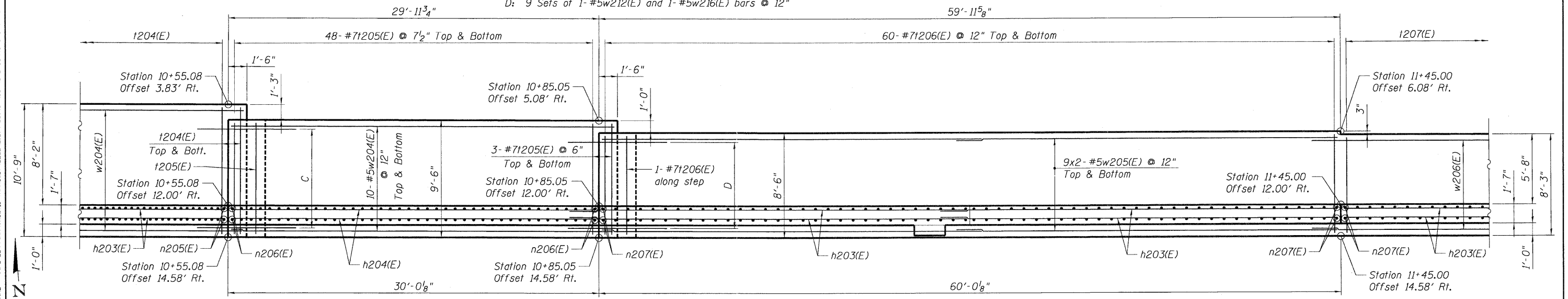


**ELEVATION**

C: 10 Sets of 1-#5w212(E) and 1-#5w216(E) bars @ 12"  
 D: 9 Sets of 1-#5w212(E) and 1-#5w216(E) bars @ 12"



**PLAN**

**Note:**  
 See Sht. RW11-11 for notes.

\045\011-60K90-006-RET WALL.DGN, \ALLENUM-60K90-001-BORDER.DGN  
 \AYM\RMZ, \S-5-0244\ANVAULT.D-TRANS.07.2202\21379-201\STRUCT\CAD\60K90\045\011-SHEET\045\011-60K90-006-RET WALL-SHT.DGN  
 5-13-2011, 15:28:32

<b>TENG</b> TENG & ASSOCIATES, INC. ENGINEERS/ARCHITECTS/PLANNERS CHICAGO, ILLINOIS	FILE NAME = #FILE#	USER NAME = #USER#	DESIGNED - MDB DRAWN - MDB CHECKED - PK DATE - 05/18/11	REVISED - REVISED - REVISED - REVISED -	<b>STATE OF ILLINOIS</b> <b>DEPARTMENT OF TRANSPORTATION</b> US 20 OVER MCLEAN BOULEVARD	<b>WALL PLAN AND ELEVATION</b> <b>6 OF 9</b>	SCALE:	SHEET NO. RW11-8 OF RW11-18	STA. 5+99.65 TO STA. 14+20.74	F.A.P. RTE. 345	SECTION BR-HB-2-BY-1	COUNTY KANE	TOTAL SHEETS 434	SHEET NO. 288
	PLOT SCALE = #SCALE# PLOT DATE = #DATE#	SN 045-W011	CONTRACT NO. 60K90	FED. ROAD DIST. NO. 7 ILLINOIS FED. AID PROJECT										