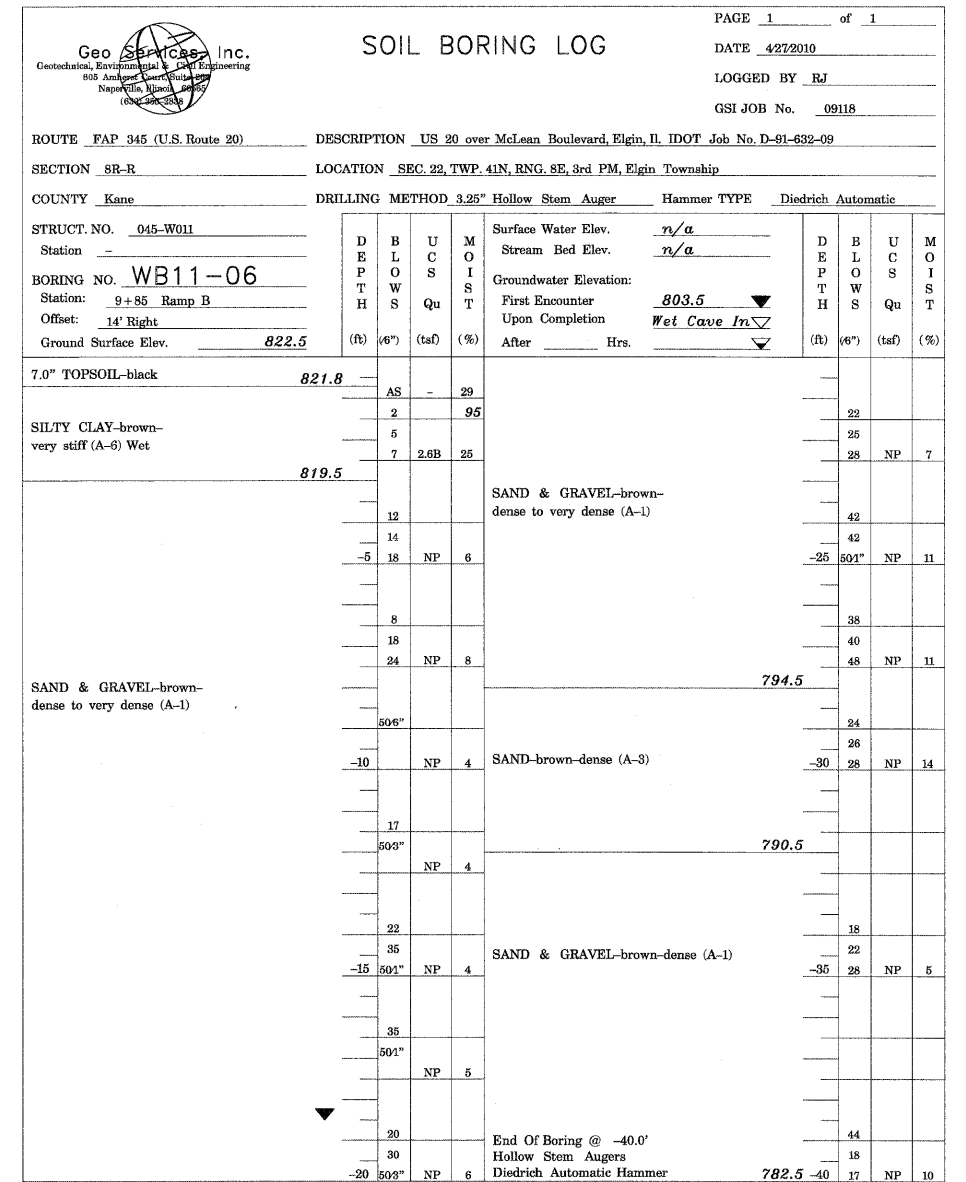
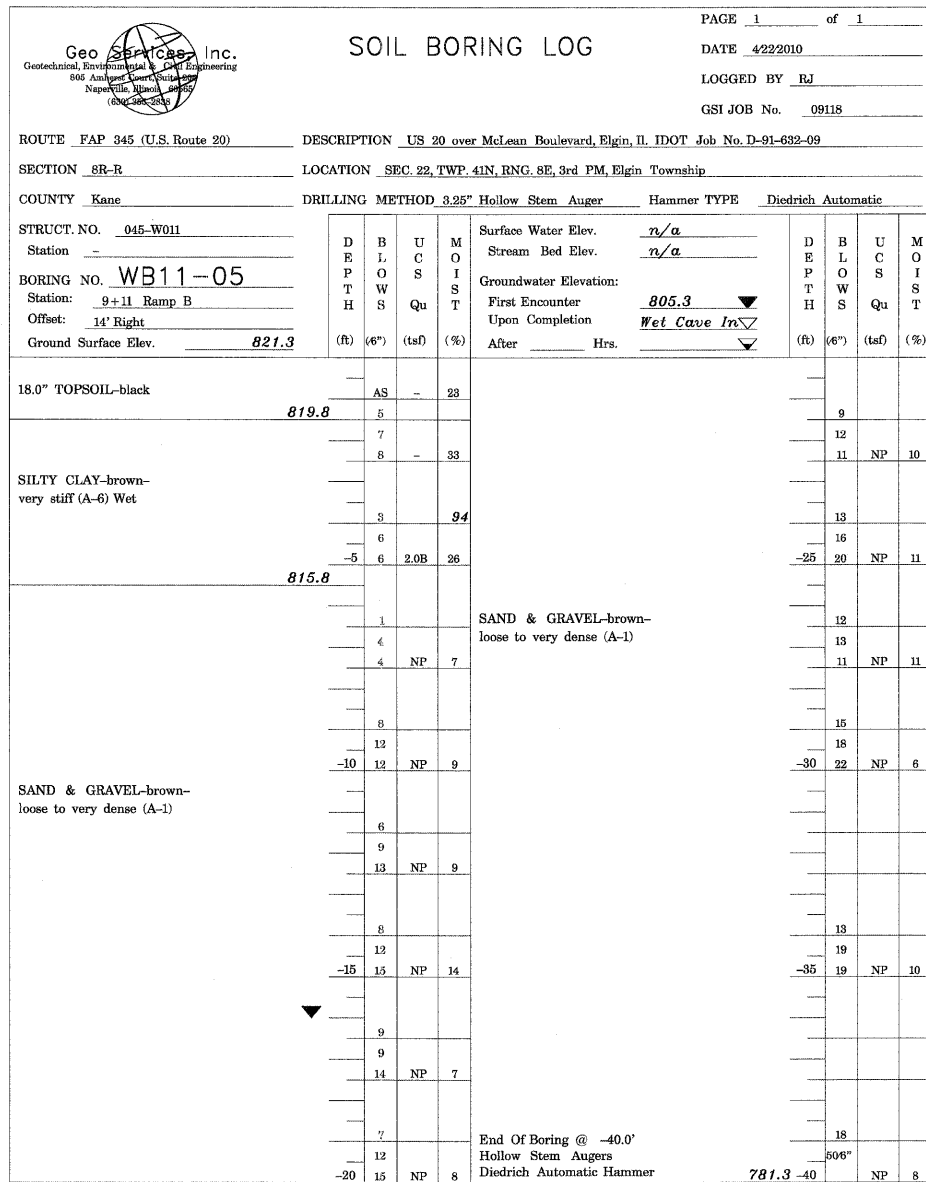
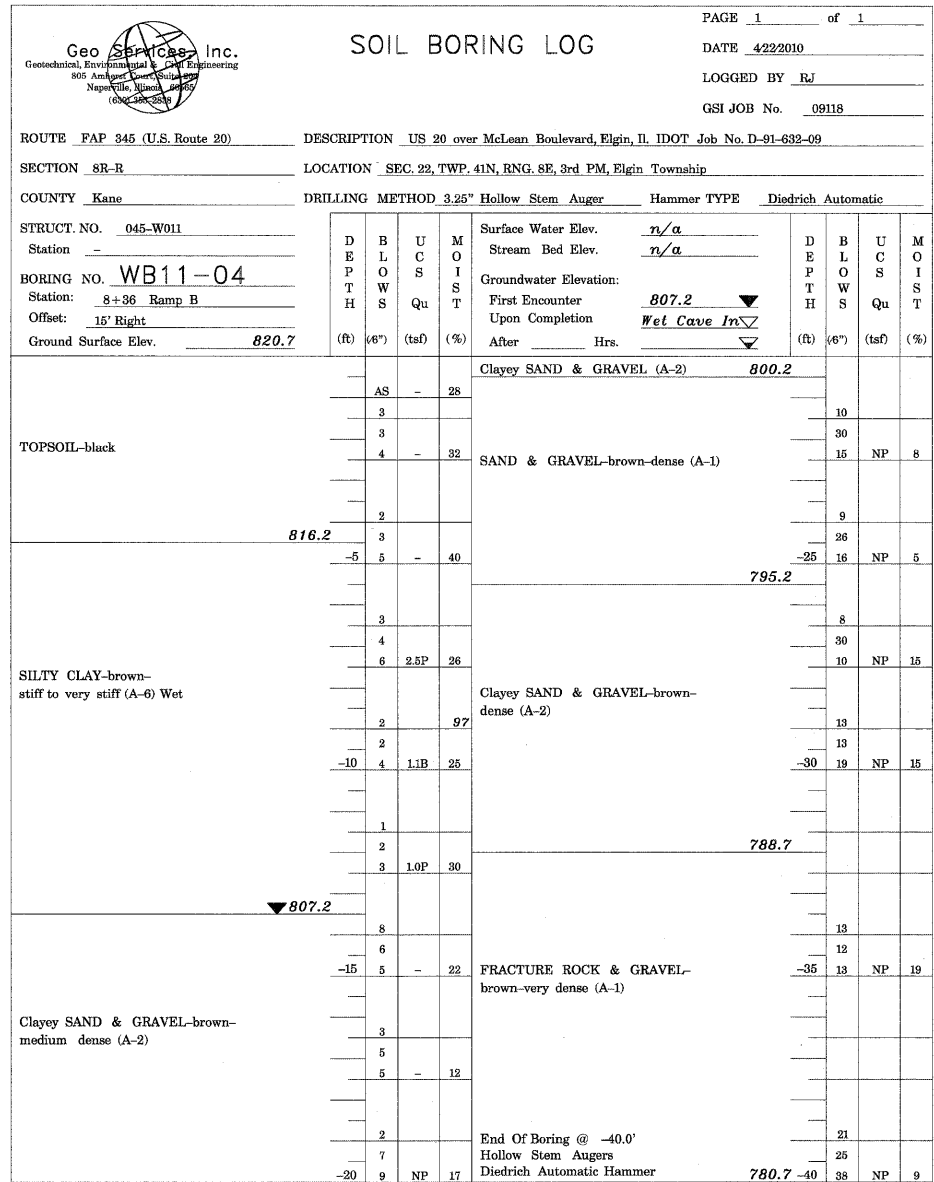


SOIL BORING WB11-04

SOIL BORING WB11-05

SOIL BORING WB11-06



045W011-60K90-001-SOILBORING.DWG, VAL, SNUM, 60K90-001-BORDER.DWG
 5-13-2011, 15:39:05
 HAYMARRZ \\FS-0044\AMVAULT\T-D-TRANS_072202\21379-801\STRUCT\CAD\60K90-045W011\SHEET\045W011-60K90-002-SOILBORING-SHT.DWG

The Unconfined Compressive Strength (UCS) Failure Mode is indicated by (B-Bulge, S-Shear, P-Penetrometer) ST-Shelby Tube Sample VS-Vane Shear Test
 The SPT (N value) is the sum of the last two blow values in each sampling zone (AASHTO T206) The Unit Dry Weight (pcf) is noted in italics above moist (%)
 NR-No Recovery

FILE NAME =	USER NAME = #USER#	DESIGNED -	REVISED -	STATE OF ILLINOIS DEPARTMENT OF TRANSPORTATION US 20 OVER MCLEAN BOULEVARD	SOIL BORING LOGS 2 OF 4	F.A.P. R.T.E.	SECTION	COUNTY	TOTAL SHEETS	SHEET NO.
#FILE#		DRAWN - MDB	REVISED -			345	8R-HB-2-BY-1	KANE	434	296
PLOT SCALE = #SCALE#		CHECKED - PK	REVISED -			SN 045-W011		CONTRACT NO. 60K90		
PLOT DATE = #DATE#		DATE - 05/18/11	REVISED -	SCALE:	SHEET NO. RW11-16 OF RW11-18	STA. 5+99.65 TO STA. 14+20.74	FED. ROAD DIST. NO. 7 ILLINOIS FED. AID PROJECT			