

**STATE OF ILLINOIS
DEPARTMENT OF TRANSPORTATION
DIVISION OF HIGHWAYS**

**PROPOSED
HIGHWAY PLANS**

**FAU ROUTE 1600: ILL 7 (143rd STREET)
WOLF RD. TO SOUTHWEST HWY.
SECTION 80 R-RS-1
PROJECT: M-1600(002)
RESURFACING (3P)
COOK COUNTY
C-91-630-10**

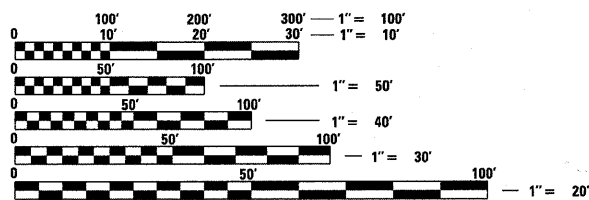
FOR INDEX OF SHEETS, SEE SHEET NO. 2

**THE PROJECT IS LOCATED IN THE
VILLAGE OF ORLAND PARK.**

TRAFFIC DATA:

2009 ADT = 15200

POSTED SPEED LIMIT = 30 - 40 MPH

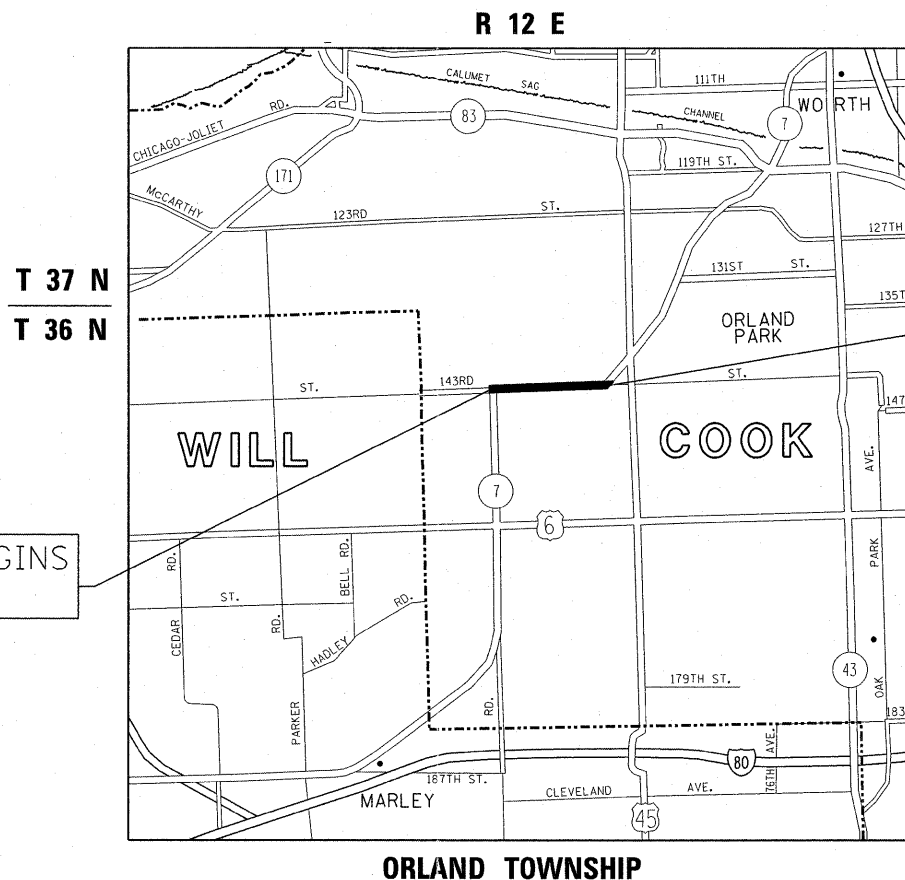


FULL SIZE PLANS HAVE BEEN PREPARED USING STANDARD ENGINEERING SCALES. REDUCED SIZED PLANS WILL NOT CONFORM TO STANDARD SCALES. IN MAKING MEASUREMENTS ON REDUCED PLANS, THE ABOVE SCALES MAY BE USED.

J.U.L.I.E.
JOINT UTILITY LOCATION INFORMATION FOR EXCAVATION
1-800-892-0123
OR 811

PROJECT ENGINEER JENPAI CHANG 847-705-4432
PROJECT MANAGER KEN ENG

CONTRACT NO. 60L02



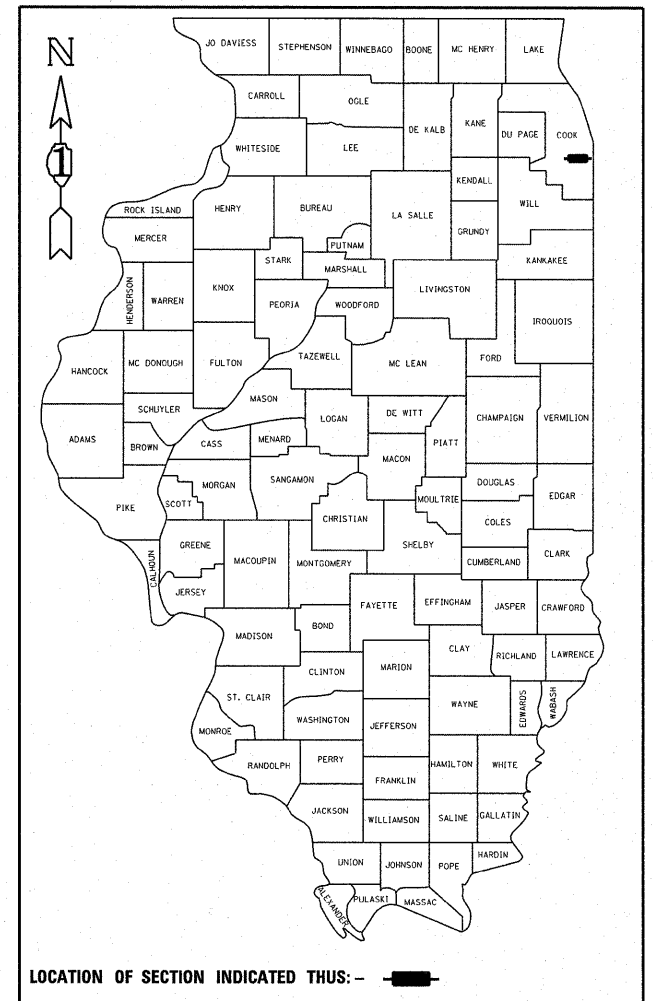
PROJECT BEGINS
63+44

PROJECT ENDS
150+22

GROSS LENGTH = 8,678.00 FT. = 1.640 MILE
NET LENGTH = 8,678.00 FT. = 1.640 MILE

F.A.U. RTE.	SECTION	COUNTY	TOTAL SHEETS	SHEET NO.
1600	80 R-RS-1	COOK	24	1
		ILLINOIS	CONTRACT NO. 60L02	

D-91-630-10



LOCATION OF SECTION INDICATED THIS: — [black rectangle]

STATE OF ILLINOIS
DEPARTMENT OF TRANSPORTATION
DIVISION OF HIGHWAYS

SUBMITTED May 12, 20 11

Diane M. O'Keefe
DEPUTY DIRECTOR OF HIGHWAYS, REGION ENGINEER

July 1 20 11
Scott E. Stitt
acting ENGINEER OF DESIGN AND ENVIRONMENT

July 1 20 11
Christine M. Rodler
DIRECTOR OF HIGHWAYS, CHIEF ENGINEER

**PRINTED BY THE AUTHORITY
OF THE STATE OF ILLINOIS**