

Geometry is based on 6" block heights.  
Geometry shall be adjusted per block dimensions used.

**WALL ELEVATION**  
(Dimensions along back face of ditch)

**EDGE OF PAVEMENT STATIONS & OFFSETS**

Station	*Offset (Rt.)
503+34.00	22.45'
503+40.00	23.15'
503+50.00	24.33'
503+60.00	25.50'
503+70.00	26.68'
503+80.00	27.96'
503+90.00	29.34'
504+00.00	30.82'
504+10.00	32.40'
504+20.00	34.08'
504+30.00	35.86'
504+40.00	37.74'
504+50.00	39.05'
504+60.00	39.69'
504+70.00	40.30'
504+80.00	40.87'
504+93.25	41.57'

\* Offsets refer to the distance from  $\odot$  South leg of US 34 to the edge of proposed pavement, measured at right angles or radially from Sta. 503+34.00 to Sta. 504+93.25. See Sheet 2 of 2 for typical cross-section.

**THEORETICAL TOP OF CAP BLOCK ELEVATIONS**

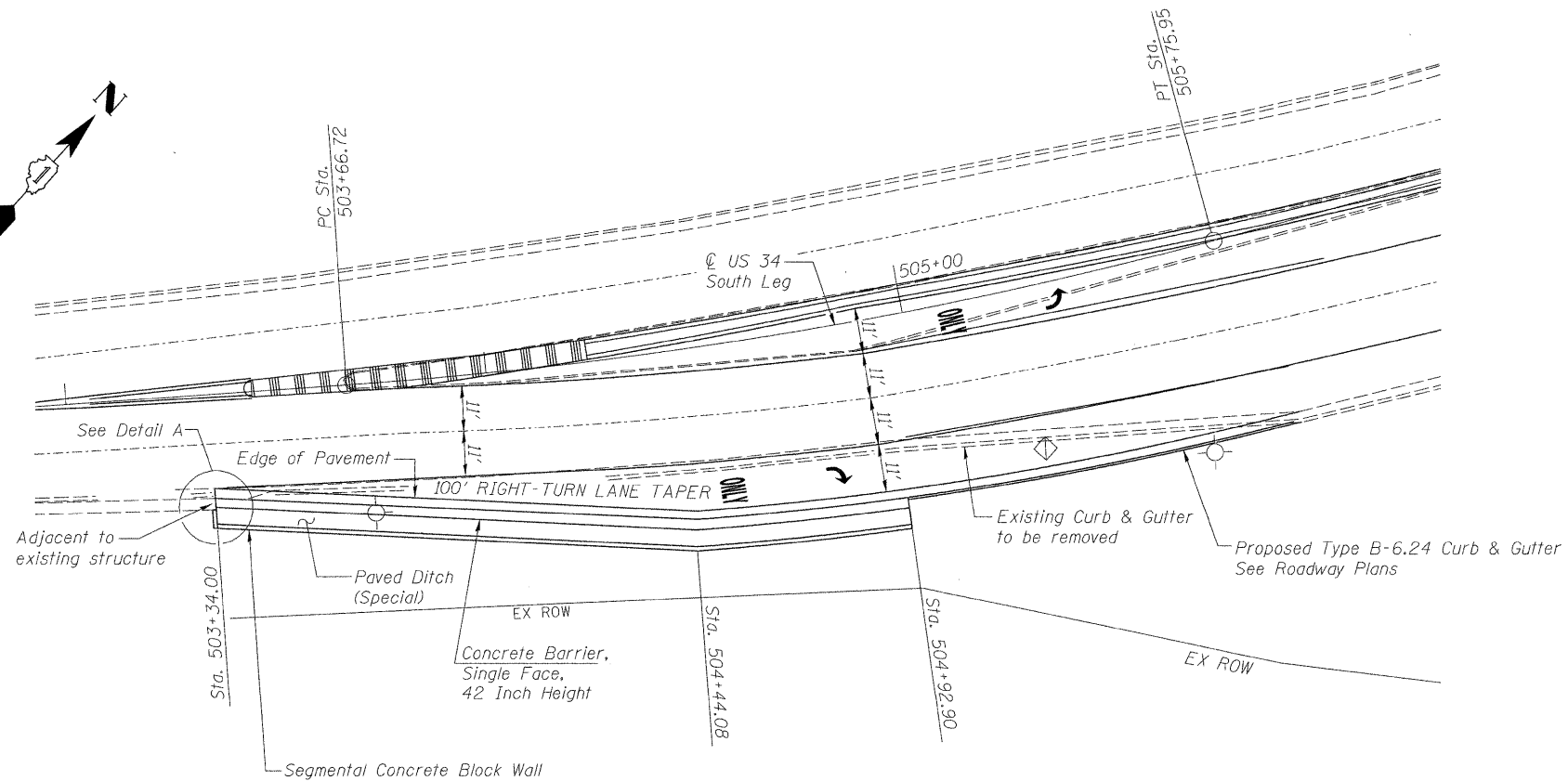
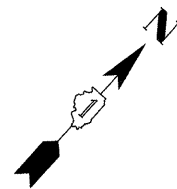
①	Elev. 689.47
②	Elev. 689.97
③	Elev. 690.47
④	Elev. 690.97
⑤	Elev. 691.47
⑥	Elev. 691.97
⑦	Elev. 692.47
⑧	Elev. 692.97
⑨	Elev. 693.47
⑩	Elev. 693.97
⑪	Elev. 694.47
⑫	Elev. 694.97
⑬	Elev. 695.47
⑭	Elev. 694.97
⑮	Elev. 694.47
⑯	Elev. 693.97
⑰	Elev. 693.47

**CURVE DATA**

PI Sta. = 504+71.67  
 $\Delta = 11^\circ 08' 02''$  (LT)  
 D = 5° 19' 17"  
 R = 1,076.73'  
 T = 104.95'  
 L = 209.23'  
 E = 5.10'  
 P.C. Sta. = 503+66.72  
 P.T. Sta. = 505+75.95

**TOTAL BILL OF MATERIAL**

ITEM	UNIT	TOTAL
Segmental Concrete Block Wall	Sq. Ft.	575
Concrete Barrier, Single Face, 42 Inch Height	Foot	166
Paved Ditch (Special)	Foot	166



**PLAN**

Note:  
Stations are measured to back face of paved ditch.  
See Sheet 2 of 2 for Detail A.