

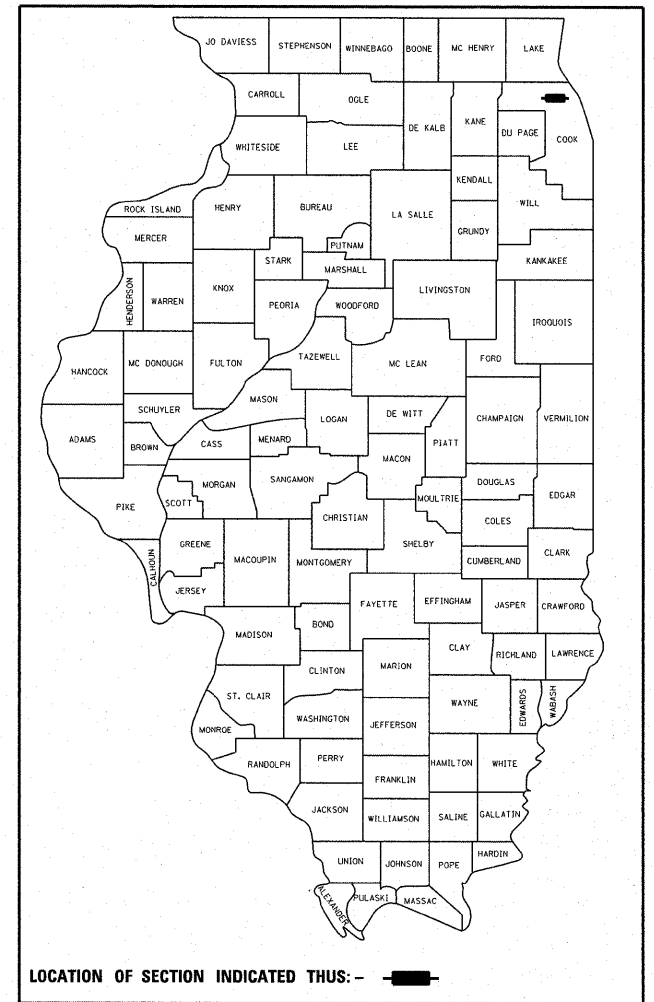
F.A.U. RTE.	SECTION	COUNTY	TOTAL SHEETS	SHEET NO.
1328	0505.1-RS-2	COOK	17	1
		ILLINOIS	CONTRACT NO. 60M19	

STATE OF ILLINOIS
DEPARTMENT OF TRANSPORTATION
DIVISION OF HIGHWAYS
**PROPOSED
HIGHWAY PLANS**
FAU 1328: LINCOLN AVENUE
LINDER AVENUE TO MAIN STREET
SECTION: 0505.1-RS-2
COOK COUNTY

FOR INDEX OF SHEETS, SEE SHEET NO. 2

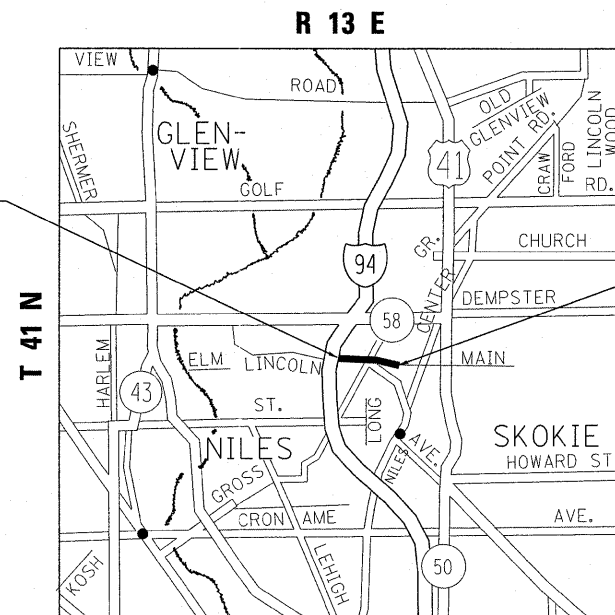
PROJECT LOCATED IN THE VILLAGES OF
MORTON GROVE AND SKOKIE

D-91-086-11



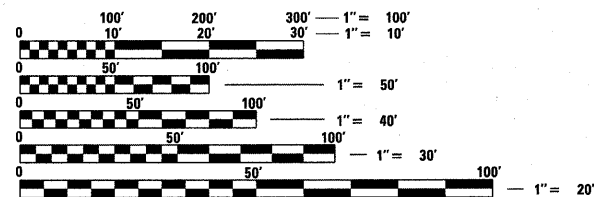
RESURFACING (3P)
C-91-086-11

PROJECT BEGINS:
STATION 3+27



PROJECT ENDS:
STATION 30+32

TRAFFIC DATA
2010 ADT = 8,400 VPD
SPEED LIMIT = 30 MPH



FULL SIZE PLANS HAVE BEEN PREPARED USING STANDARD ENGINEERING SCALES. REDUCED SIZED PLANS WILL NOT CONFORM TO STANDARD SCALES. IN MAKING MEASUREMENTS ON REDUCED PLANS, THE ABOVE SCALES MAY BE USED.

J.U.L.I.E.
JOINT UTILITY LOCATION INFORMATION FOR EXCAVATION
1-800-892-0123
OR 811

PROJECT ENGINEER: DAN WILGREEN (847) 705-4240
PROJECT MANAGER: KEN ENG

CONTRACT NO. 60M19

GROSS LENGTH = NET LENGTH = 2,705 FEET = 0.51 MILES

STATE OF ILLINOIS
DEPARTMENT OF TRANSPORTATION
DIVISION OF HIGHWAYS

SUBMITTED May 10, 2011

Diane M. O'Keefe DEPUTY DIRECTOR OF HIGHWAYS, REGION ENGINEER

July 1, 2011
Scott E. Stitt, P.E. ACTING ENGINEER OF DESIGN AND ENVIRONMENT

July 1, 2011
Christine M. Reed DIRECTOR OF HIGHWAYS, CHIEF ENGINEER

**PRINTED BY THE AUTHORITY
OF THE STATE OF ILLINOIS**