

STATE OF ILLINOIS
 DEPARTMENT OF TRANSPORTATION
 DIVISION OF HIGHWAYS

**PROPOSED
 HIGHWAY PLANS**

F.A.U. ROUTE 1397: ST. CHARLES RD.
 WOLF RD. TO SPEECHLEY BLVD.
 SECTION: 134-Y-RS-1
 RESURFACING

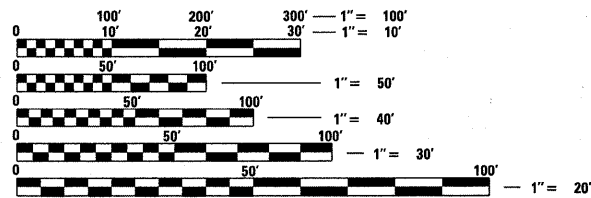
COOK COUNTY

C-91-094-11

F.A.U. RTE.	SECTION	COUNTY	TOTAL SHEETS	SHEET NO.
1397	134-Y-RS-1	COOK	19	1
		ILLINOIS	CONTRACT NO. 60M27	

FOR INDEX OF SHEETS, SEE SHEET NO. 2

THIS PROJECT IS LOCATED
 IN VILLAGE OF BERKELEY

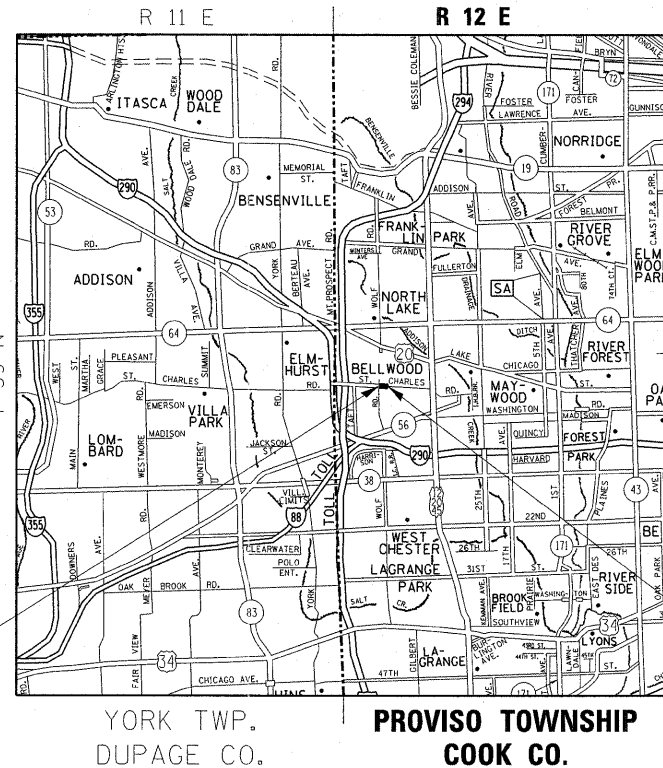


FULL SIZE PLANS HAVE BEEN PREPARED USING STANDARD ENGINEERING SCALES. REDUCED SIZED PLANS WILL NOT CONFORM TO STANDARD SCALES. IN MAKING MEASUREMENTS ON REDUCED PLANS, THE ABOVE SCALES MAY BE USED.

J.U.L.I.E.
 JOINT UTILITY LOCATION INFORMATION FOR EXCAVATION
 1-800-892-0123
 OR 811

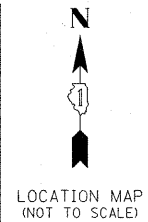
PROJECT ENGINEER: DAN WILGREEN / (847) 705-4240
 PROJECT MANAGER: KEN ENG / (847)-705-4247

CONTRACT NO. 60M27



PROJECT BEGINS
 STA 11+18

PROJECT ENDS
 STA 23+67



TRAFFIC DATA:
 2006 ADT = 16500
 SPEED LIMIT = 30 MPH

GROSS AND NET LENGTH = 1249 FT. = 0.24 MILES

STATE OF ILLINOIS
 DEPARTMENT OF TRANSPORTATION
 DIVISION OF HIGHWAYS

SUBMITTED May 10, 2011

Diana M. O'Keefe DEPUTY DIRECTOR OF HIGHWAYS, REGION ENGINEER

July 1, 2011
Scott E. Stutz PE, ENGINEER OF DESIGN AND ENVIRONMENT

July 1, 2011
Christine M. Reed DIRECTOR OF HIGHWAYS, CHIEF ENGINEER

PRINTED BY THE AUTHORITY
 OF THE STATE OF ILLINOIS