

STATE OF ILLINOIS  
DEPARTMENT OF TRANSPORTATION  
DIVISION OF HIGHWAYS

**PROPOSED  
HIGHWAY PLANS**

FAU ROUTE 2690: WOLF ROAD  
FRANKLIN STREET TO GRAND AVENUE  
SECTION: 2527-RS-2  
COOK COUNTY

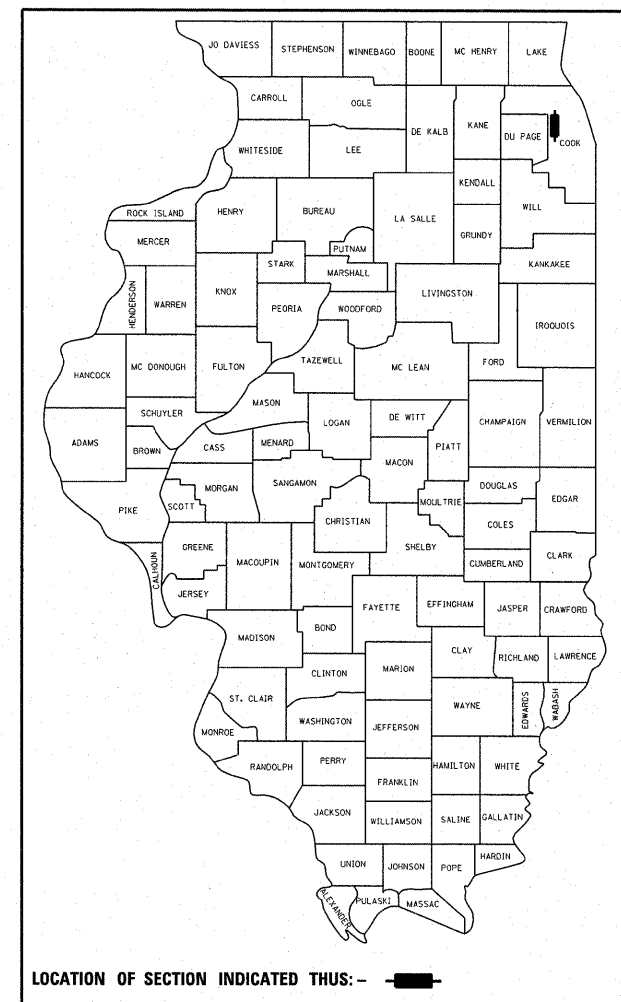
RESURFACING (3P)  
C-91-096-11

F.A.U. RTE.	SECTION	COUNTY	TOTAL SHEETS	SHEET NO.
2690	2527-RS-2	COOK	22	1
ILLINOIS		CONTRACT NO. 60M29		

FOR INDEX OF SHEETS, SEE SHEET NO. 2

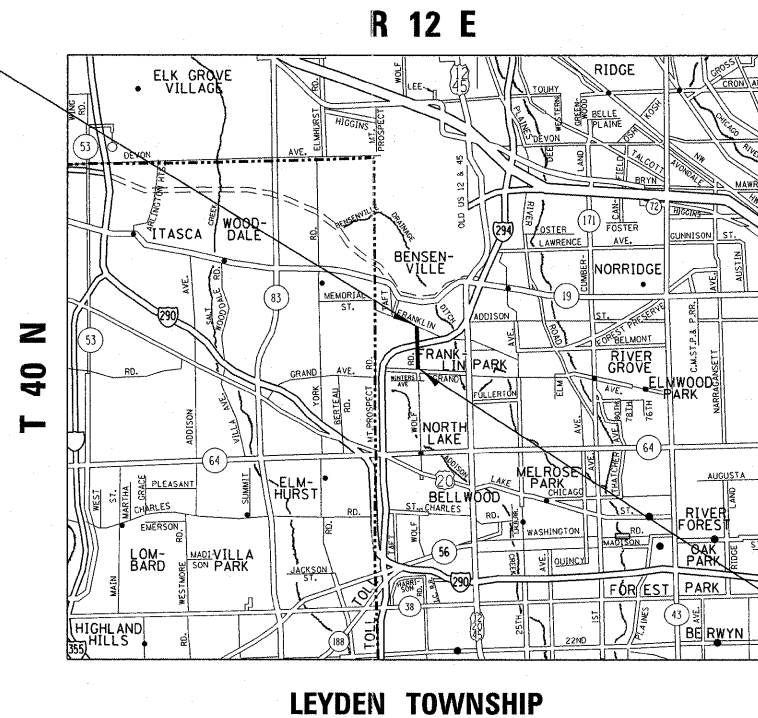
PROJECT IS LOCATED IN  
THE VILLAGE OF FRANKLIN PARK

D-91-096-11



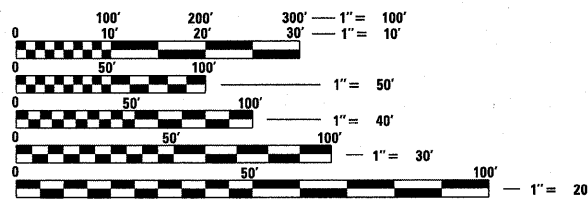
PROJECT ENDS  
STATION 72+08

OMISSIONS:  
STATION 47+55 TO  
STATION 50+14 AND  
STATION 66+62 TO  
STATION 66+72



TRAFFIC DATA  
2010 ADT = 9,100 VPD  
SPEED LIMIT = 35 MPH

PROJECT BEGINS  
STATION 20+62



FULL SIZE PLANS HAVE BEEN PREPARED USING STANDARD ENGINEERING SCALES. REDUCED SIZED PLANS WILL NOT CONFORM TO STANDARD SCALES. IN MAKING MEASUREMENTS ON REDUCED PLANS, THE ABOVE SCALES MAY BE USED.

J.U.L.I.E.  
JOINT UTILITY LOCATION INFORMATION FOR EXCAVATION  
1-800-892-0123  
OR 811

PROJECT ENGINEER: DAN WILGREEN (847) 705-4240  
PROJECT MANAGER: KEN ENG

GROSS LENGTH OF IMPROVEMENT = 5,146 FEET = 0.97 MILES  
NET LENGTH OF IMPROVEMENT = 4877 FEET = 0.92 MILES

CONTRACT NO. 60M29

STATE OF ILLINOIS  
DEPARTMENT OF TRANSPORTATION  
DIVISION OF HIGHWAYS

SUBMITTED May 10, 20 11

Diana M. O'Keefe  
DEPUTY DIRECTOR OF HIGHWAYS, REGION ENGINEER

July 1 20 11  
Scott E. Stitt, P.E.  
ENGINEER OF DESIGN AND ENVIRONMENT

July 1 20 11  
Christine M. Reed  
DIRECTOR OF HIGHWAYS, CHIEF ENGINEER

PRINTED BY THE AUTHORITY  
OF THE STATE OF ILLINOIS