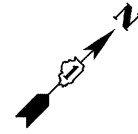


LEGEND

- ① THERMOPLASTIC PAVEMENT MARKING
4" DOUBLE SOLID YELLOW CENTERLINE, 11" C-C, (TYP.)
- ② THERMOPLASTIC PAVEMENT MARKING
4" SOLID YELLOW CENTERLINE (TYP.)
- ③ THERMOPLASTIC PAVEMENT MARKING
4" SOLID YELLOW CENTERLINE, SKIP-DASH, 10'-30' (TYP.)
- ④ THERMOPLASTIC PAVEMENT MARKING LINE
12" SOLID YELLOW DIAGONAL, 150' (5' MIN.), 45° (TYP.)
- ⑤ THERMOPLASTIC PAVEMENT MARKING
4" SOLID WHITE EDGE LINE (TYP.)
- ⑥ THERMOPLASTIC PAVEMENT MARKING
4" SOLID WHITE LANELINE, SKIP-DASH, 10'-30' (TYP.)
- ⑦ THERMOPLASTIC PAVEMENT MARKING
6" SOLID WHITE LANE LINE (TYP.)
- ⑧ THERMOPLASTIC PAVEMENT MARKING LINE
8" SOLID WHITE DIAGONAL, 8" C-C, 45°, (TYP.)
- ⑨ THERMOPLASTIC PAVEMENT MARKING, 24"
SOLID WHITE STOP BAR
- ⑩ THERMOPLASTIC PAVEMENT MARKING
LETTERS & SYMBOLS (TYP.)
- ⑪ THERMOPLASTIC PAVEMENT MARKING
6" DOTTED WHITE LINE, 3'-6" (TYP.)

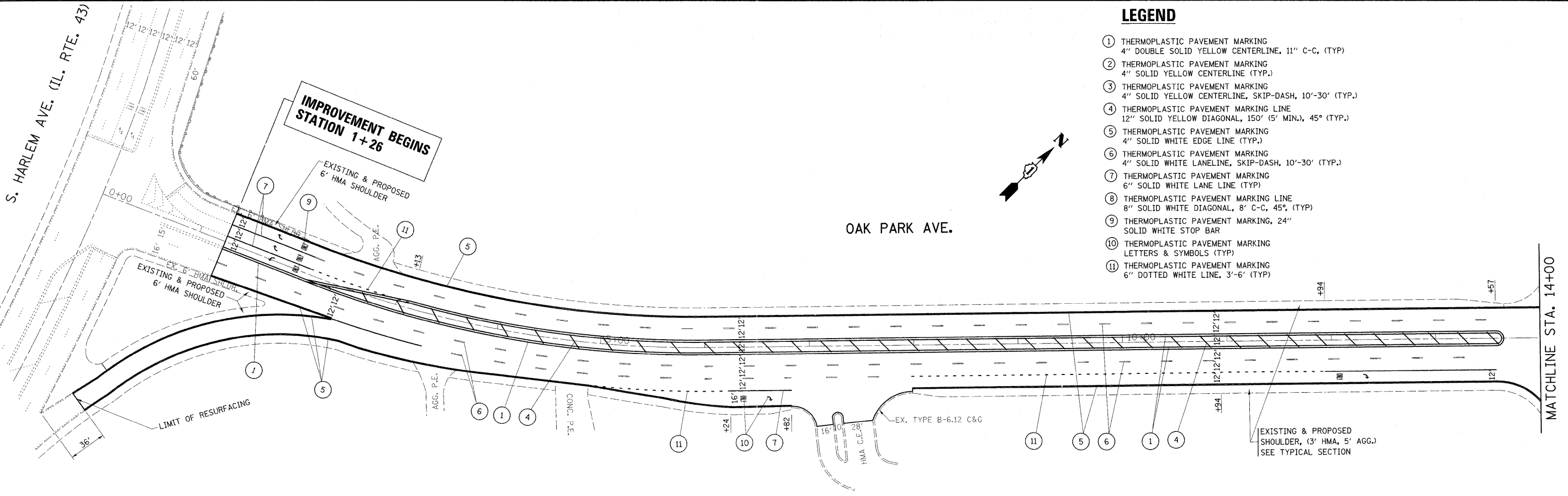


OAK PARK AVE.

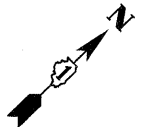
S. HARLEM AVE. (IL. RTE. 43)

IMPROVEMENT BEGINS
STATION 1+26

MATCHLINE STA. 14+00

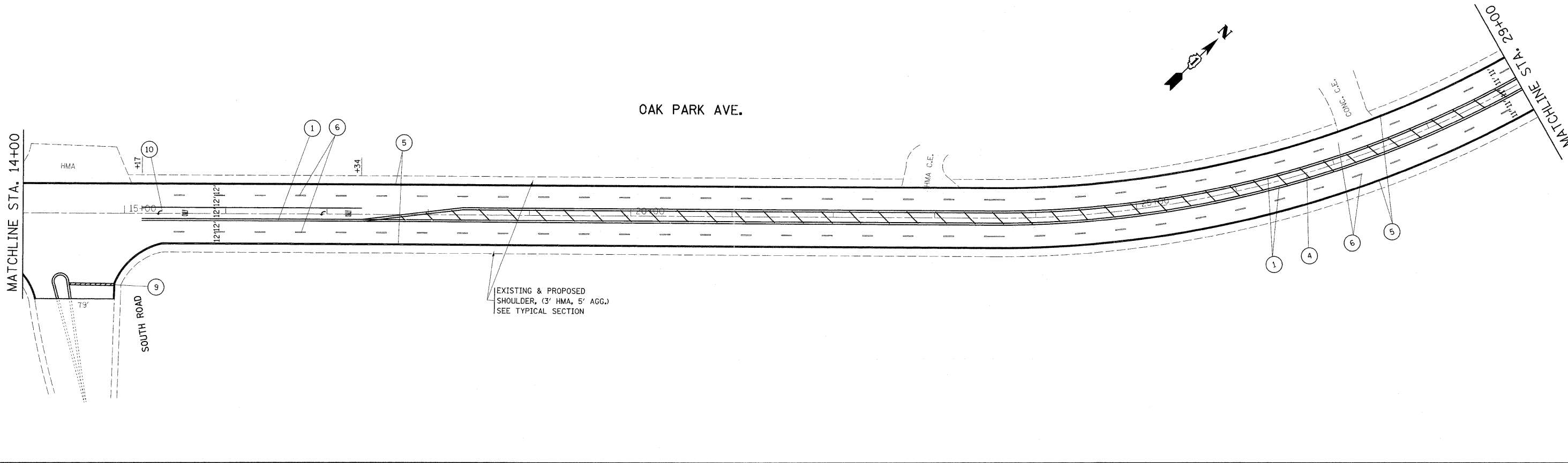


OAK PARK AVE.



MATCHLINE STA. 29+00

MATCHLINE STA. 14+00



FILE NAME = D:\10511-sh-t-plan.dgn	USER NAME = bauer-dl	DESIGNED -	REVISED -	STATE OF ILLINOIS DEPARTMENT OF TRANSPORTATION	OAK PARK AVENUE (I-80 TO IL ROUTE 43 (HARLEM AVENUE)) ROADWAY AND PAVEMENT MARKING PLAN	F.A.U. RTE. 2774	SECTION 2010-110-RS	COUNTY COOK	TOTAL SHEETS 17	SHEET NO. 7		
PLOT SCALE = 50,0000' / in.		CHECKED -	REVISED -			SCALE: 1"=50'	SHEET NO. OF SHEETS	STA. 1+26	TO STA. 29+00	CONTRACT NO. 60M38		
PLOT DATE = 6/27/2011		DATE -	REVISED -			ILLINOIS FED. AID PROJECT						