

ROUTE MARKERS

FOR U.S. ROUTES
M1-40-2424

FOR ILLINOIS ROUTES
M1-50-2424

MAIN STREET
R.R. UNMARKED ROUTES
SPECIAL 24" x 18" VARIABLE
4" BLACK LETTERS ON WHITE
REFLECTIVE BACKGROUND

ARROWS SIGNS

M5-1L-2115

M5-1R-2115

M6-1L-2115

M6-1R-2115

M6-3-2115

CARDINAL DIRECTION & DETOUR SIGNS

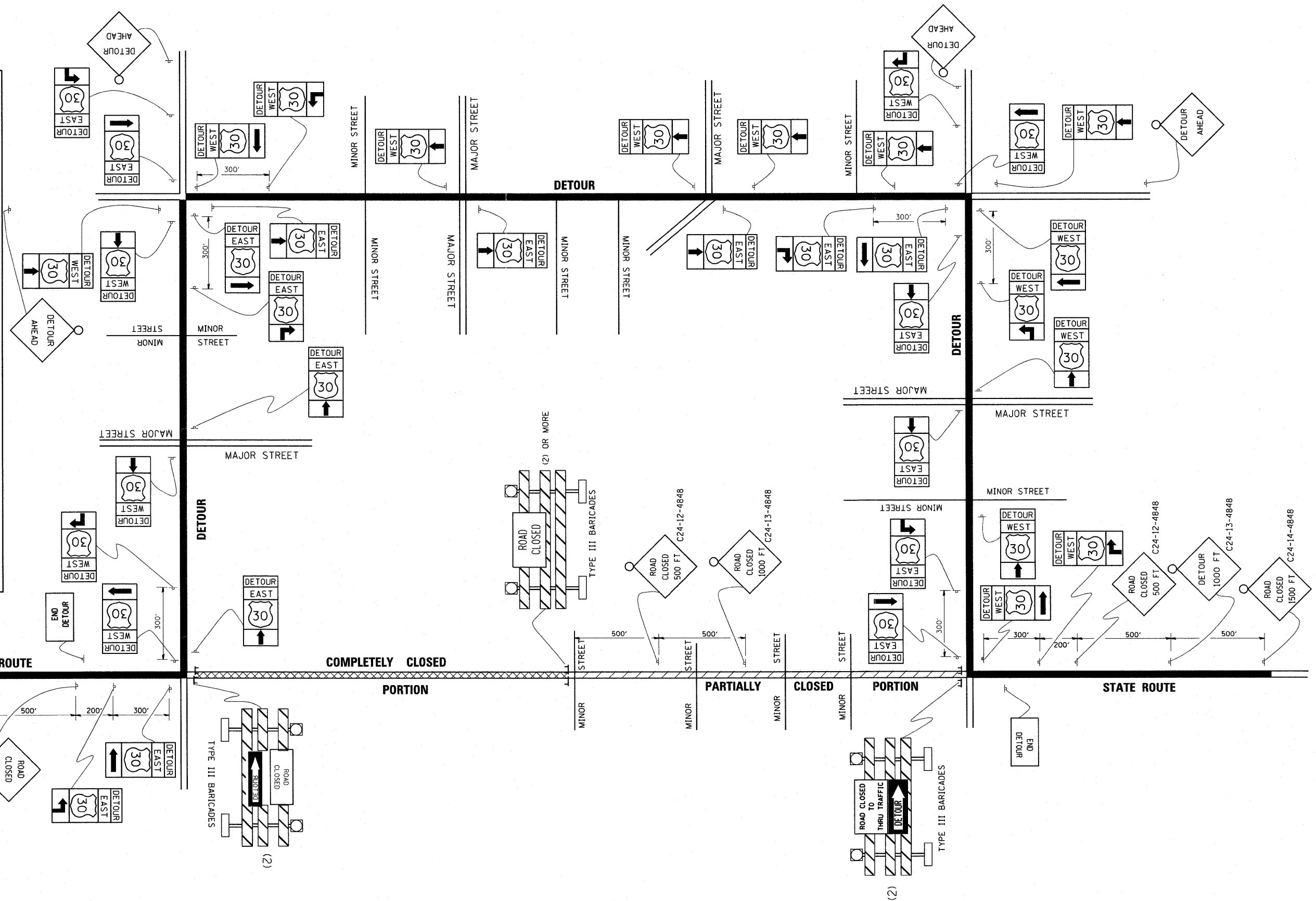
NORTH M3-1-219

EAST M3-2-219

SOUTH M3-3-219

WEST M3-4-219

DETOUR M1-7-219



FILE NAME = W:\diststd\22x34\to21.dgn	USER NAME = gaglianob	DESIGNED - DRAWN -	REVISED - 10-18-02 REVISED - REVISED -	STATE OF ILLINOIS DEPARTMENT OF TRANSPORTATION	TYPICAL MARKING FOR CLOSING STATE HIGHWAYS			F.A. RTE. = 1381	SECTION 0101.1-T	COUNTY COOK	TOTAL SHEETS 47	SHEET NO. 36
PLOT SCALE = 50.0000" / IN.	CHECKED -	DATE -	SCALE: NONE		SHEET NO. 1 OF 1 SHEETS	STA.	TO STA.	TC-21				
PLOT DATE = 1/4/2008								CONTRACT NO. 60M82				
								FED. ROAD DIST. NO. 1 ILLINOIS FED. AID PROJECT				