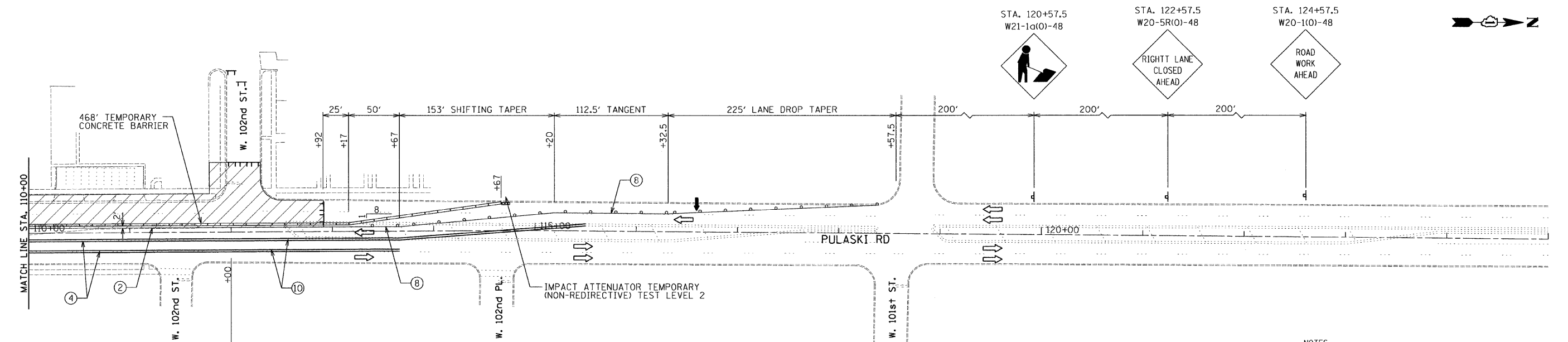
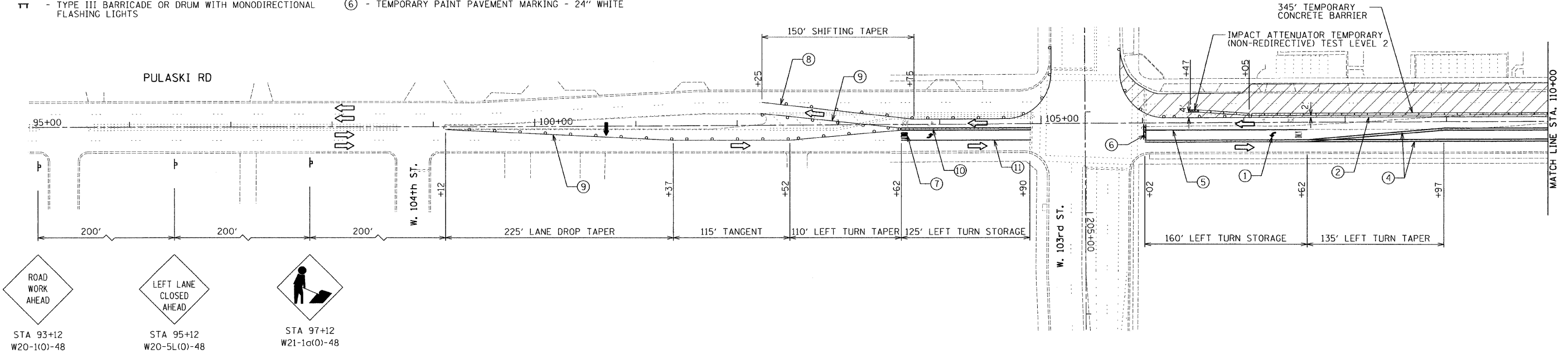
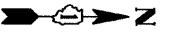


LEGEND:

- FLASHING ARROW BOARD
- WORK ZONE
- DIRECTION OF TRAFFIC
- TYPE II BARRICADES OR DRUMS WITH MONODIRECTIONAL FLASHING LIGHT AT 50' CENTERS
- TYPE III BARRICADE OR DRUM WITH MONODIRECTIONAL FLASHING LIGHTS

- ① - TEMPORARY PAINT PAVEMENT MARKING - SYMBOLS
- ② - TEMPORARY PAINT PAVEMENT MARKING - 4" WHITE SOLID
- ③ - TEMPORARY PAINT PAVEMENT MARKING - 4" YELLOW SOLID
- ④ - TEMPORARY PAINT PAVEMENT MARKING - 4" DOUBLE YELLOW SOLID
- ⑤ - TEMPORARY PAINT PAVEMENT MARKING - 6" WHITE SOLID
- ⑥ - TEMPORARY PAINT PAVEMENT MARKING - 24" WHITE

- ⑦ - WET REFLECTIVE TEMPORARY TAPE, TYPE III - LETTERS AND SYMBOLS
- ⑧ - WET REFLECTIVE TEMPORARY TAPE TYPE III - 4" WHITE SOLID
- ⑨ - WET REFLECTIVE TEMPORARY TAPE TYPE III - 4" YELLOW SOLID
- ⑩ - WET REFLECTIVE TEMPORARY TAPE TYPE III - 4" DOUBLE YELLOW SOLID
- ⑪ - WET REFLECTIVE TEMPORARY TAPE TYPE III - 6" WHITE SOLID



NOTES:
 SEE HIGHWAY STANDARD 701602 FOR ADDITIONAL DETAILS NOT SHOWN ON THIS PLAN.
 MAINTAINING ACCESS TO ADJACENT PROPERTIES WILL BE PAID FOR AS TEMPORARY ACCESS (COMMERCIAL ENTRANCE)

FILE NAME =	USER NAME = .USER.	DESIGNED - EF	REVISED -	STATE OF ILLINOIS DEPARTMENT OF TRANSPORTATION	PULASKI ROAD AT 103rd STREET SUGGESTED CONSTRUCTION STAGING - STAGE 2			F.A.U. RTE. 3778	SECTION 2011-022-T	COUNTY COOK	TOTAL SHEETS 34	SHEET NO. 8
#FILEL#	PLOT SCALE = 50,0000' / IN.	DRAWN - EF	REVISED -		SCALE: 50	SHEET NO. 2	OF 3 SHEETS	STA.	TO STA.	CONTRACT NO. 60P21		
	PLOT DATE = 6/2/2011	CHECKED - RS	REVISED -									
		DATE - 06-02-2011	REVISED -		ILLINOIS FED. AID PROJECT							