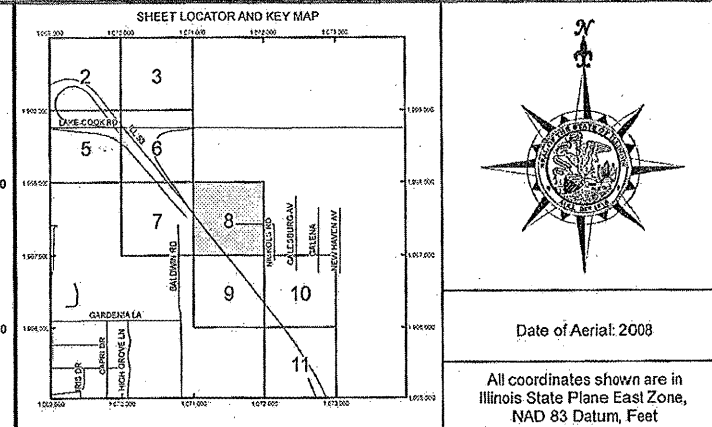
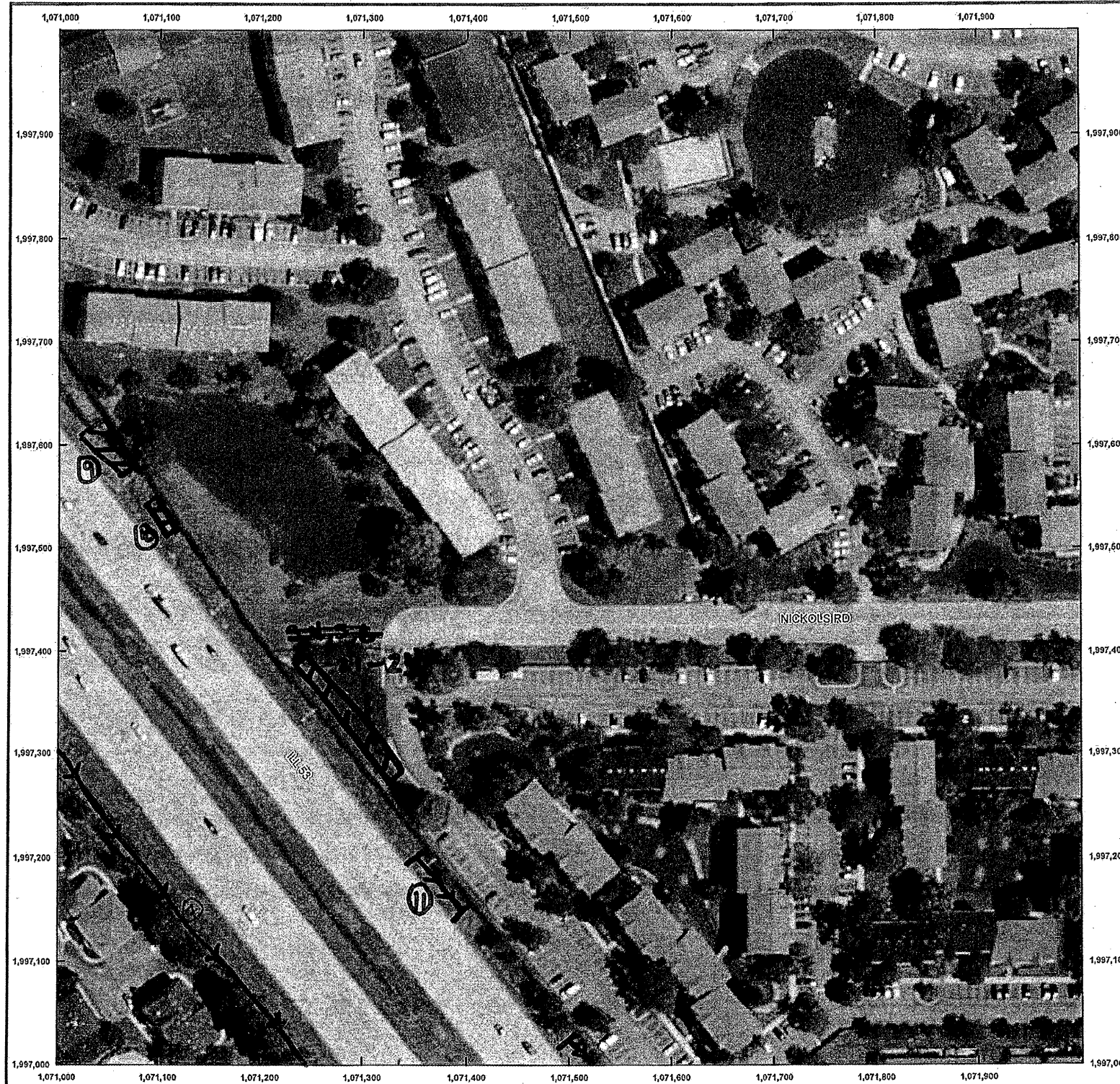


ROUTE	SECTION	COUNTY	TOTAL SHEETS	SHEET NUMBER
FAP 342	2011-026-1	COOK & LAKE	71	65

CONTRACT NO. 60P26



- (SB) West side Wall - Tree Removal
- | | |
|-----|-----|
| 2.7 | 2.6 |
| 3.2 | 3.5 |
| 1 | 5.5 |
- (NB) West side Wall - selective clear (Tree Removal):
- | | |
|----------|-----|
| ① 5'x5' | 6.1 |
| ② 10'x3' | 7.8 |
| ③ 15'x3' | 5.9 |
| | 5.3 |
- (NB) East side wall - selective clearing / Tree Removal:
- | | |
|----------|-----|
| ④ 3'x3' | 3.5 |
| ⑤ 3'x3' | |
| ⑥ 3'x3' | |
| ⑦ 22'x5' | |

ILLINOIS DEPARTMENT OF
TRANSPORTATION
ILL RTE 53
SELECTIVE CLEARING & TREE
REMOVAL
SHEET 5 OF 9