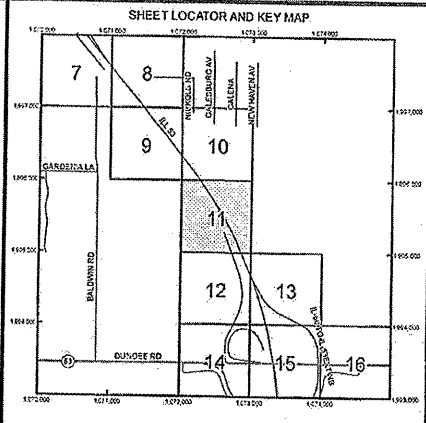
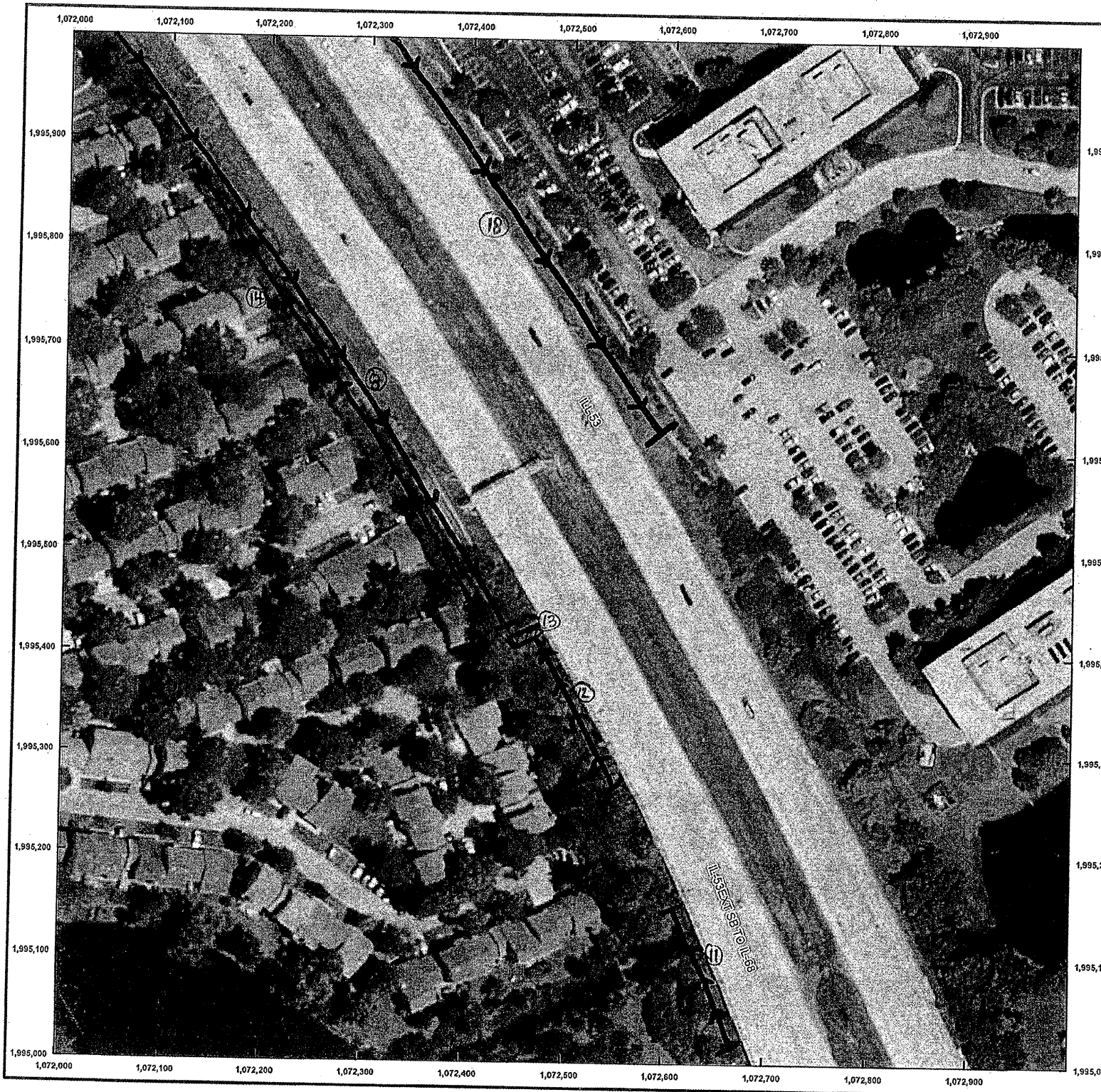


ROUTE	SECTION	COUNTY	TOTAL SHEETS	SHEET NUMBER
FAP 342	2011-026-1	COOK & LAKE	71	68

CONTRACT NO. 60P26



Date of Aerial: 2008
All coordinates shown are in Illinois State Plane East Zone, NAD 83 Datum, Feet

- (SB) East side wall - selective clearing:
- ⑧ 672' x 6'
- (SB) West side wall - selective clearing / Tree Removal:
- ① 131' x 3' 7.4
 - ② 174' x 5' 3.8
 - ③ 41' x 5' (@ wall angle)
 - ④ 484' x 5'
- (NB) West side wall - selective clear / Tree Removal:
- ⑩ 350' x 4' 16.4

ILLINOIS DEPARTMENT OF
TRANSPORTATION
ILL RTE 53
SELECTIVE CLEARING & TREE
REMOVAL
SHEET 8 OF 9