

F.A. RTE.	SECTION	COUNTY	TOTAL SHEETS	SHEET NO.
VAR.	2011-030-1	DUPAGE	33	1
FED. ROAD DIST. NO. 1	ILLINOIS	CONTRACT NO. 60P34		

33 + 1 = 34

STATE OF ILLINOIS
DEPARTMENT OF TRANSPORTATION
DIVISION OF HIGHWAYS

**PROPOSED
HIGHWAY PLANS**

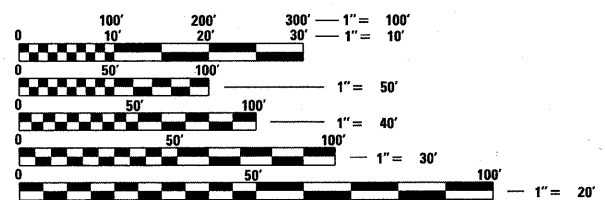
VARIOUS RAMPS
AT VARIOUS DUPAGE COUNTY LOCATIONS
SECTION: 2011-030-1
RESURFACING
DUPAGE COUNTY
C-91-515-11

FOR INDEX OF SHEETS, SEE SHEET NO. 2

D-91-515-11



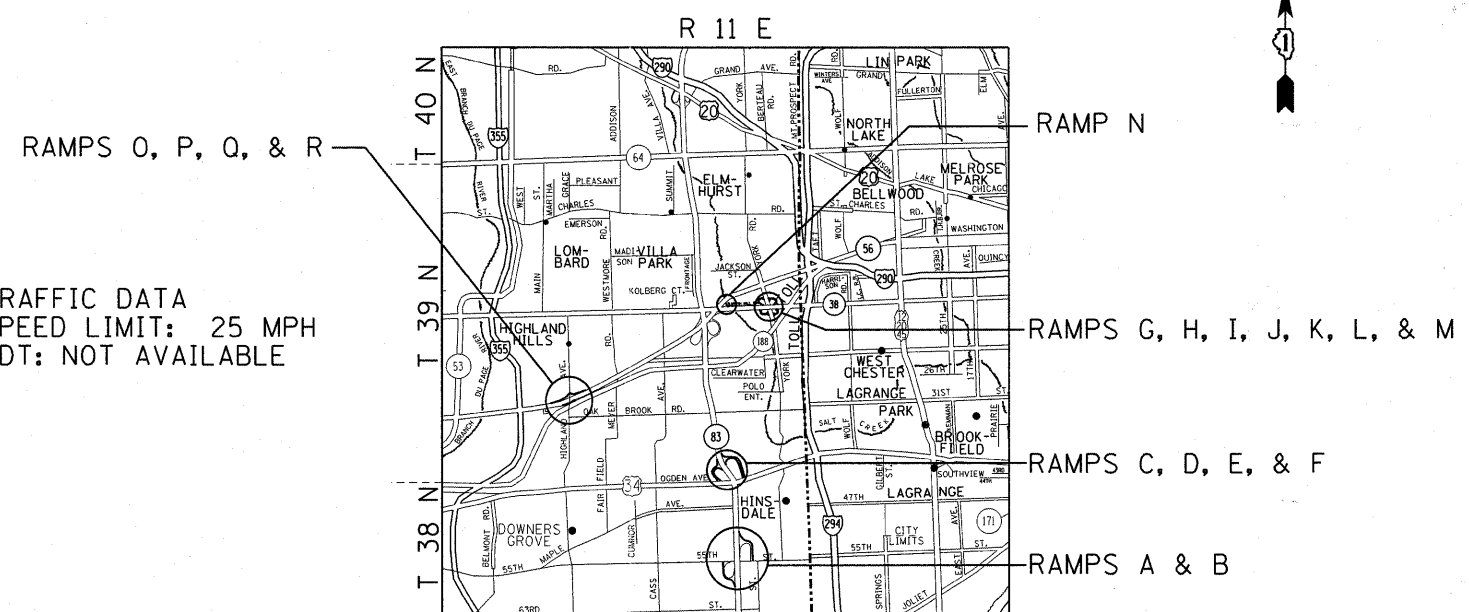
IMPROVEMENT IS LOCATED IN THE CITY OF ELMHURST AND ALSO IN THE VILLAGES OF WESTMONT, LOMBARD, HINDSDALE, DOWNERS GROVE, AND CLARENDON HILLS.



FULL SIZE PLANS HAVE BEEN PREPARED USING STANDARD ENGINEERING SCALES. REDUCED SIZED PLANS WILL NOT CONFORM TO STANDARD SCALES. IN MAKING MEASUREMENTS ON REDUCED PLANS, THE ABOVE SCALES MAY BE USED.

J.U.L.I.E.
JOINT UTILITY LOCATION INFORMATION FOR EXCAVATION
1-800-892-0123
OR 811

TRAFFIC DATA
SPEED LIMIT: 25 MPH
ADT: NOT AVAILABLE



ADDISON, YORK & DOWNERS GROVE TOWNSHIPS

PROJECT ENGINEER: DAN WILGREEN (847) 705-4240
PROJECT MANAGER: KEN ENG

CONTRACT NO. 60P34

GROSS LENGTH OF IMPROVEMENT= NET LENGTH IMPROVEMENT = 18,540 FEET (3.5 MILES)

STATE OF ILLINOIS
DEPARTMENT OF TRANSPORTATION
DIVISION OF HIGHWAYS

SUBMITTED May 16 20 11

Diane M. O'Keefe
DEPUTY DIRECTOR OF HIGHWAYS, REGION ENGINEER

July 1 20 11
Scott E. Stitt P.E.
ENGINEER OF DESIGN AND ENVIRONMENT

July 1 20 11
Christina M. Reed
DIRECTOR OF HIGHWAYS, CHIEF ENGINEER

**PRINTED BY THE AUTHORITY
OF THE STATE OF ILLINOIS**