

STATE OF ILLINOIS
DEPARTMENT OF TRANSPORTATION
DIVISION OF HIGHWAYS

PROPOSED HIGHWAY PLANS

F.A.I. 55 (INTERSTATE 55)
SECTION 2011-041-GRR
US 6 TO WEST OF INTERSTATE 294
GUARDRAIL IMPROVEMENTS
WILL AND DUPAGE COUNTIES
C-91-554-11

F.A.I. RTE.	SECTION	COUNTY	TOTAL SHEETS	SHEET NO.
55	2011-041-GRR	DUPAGE/WILL	19	1
FED. ROAD DIST. NO. 1		ILLINOIS		
D-91-554-11				
CONTRACT NO. 60P47				

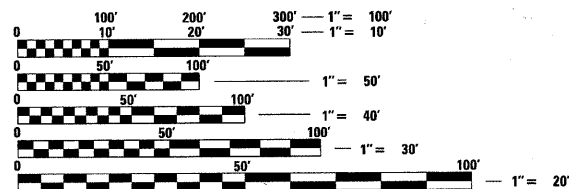
FOR INDEX OF SHEETS, SEE SHEET NO. 2

IMPROVEMENT LOCATED WITHIN THE VILLAGE OF PLAINFIELD, VILLAGE OF ROMEVILLE, VILLAGE OF BOLINGBROOK, CITY OF DARIEN, VILLAGE OF LEMONT, AND THE VILLAGE OF BURR RIDGE.

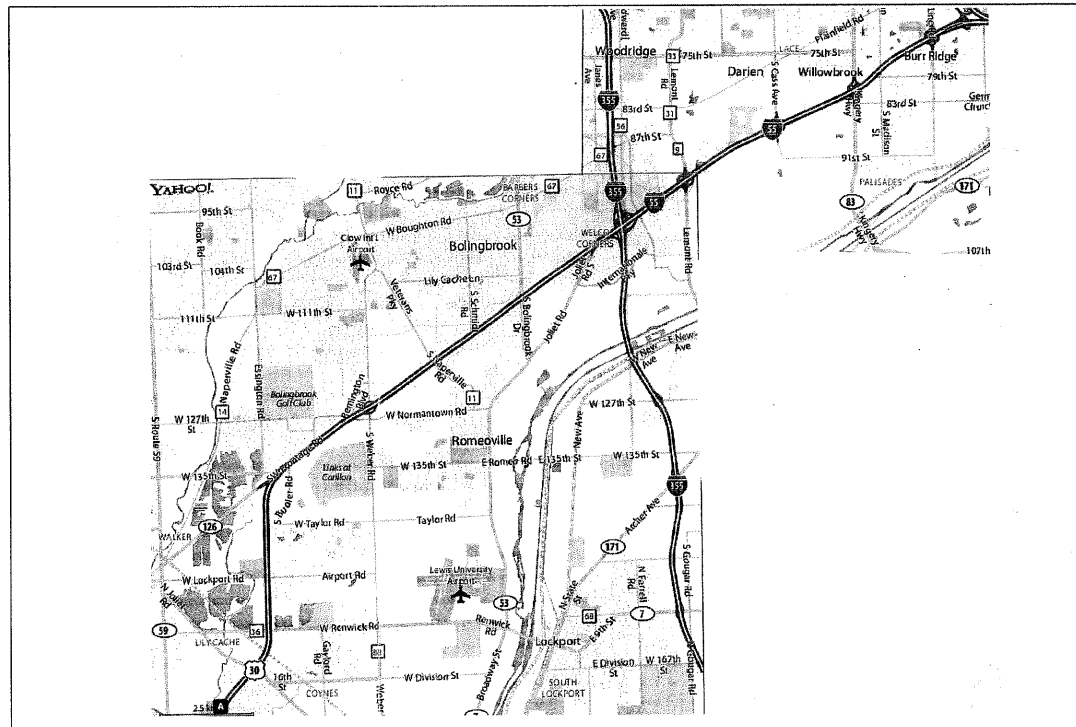
TRAFFIC DATA

I-55
2010 ADT = 24,000 TO 147,400
SPEED LIMIT = 55-65 MPH

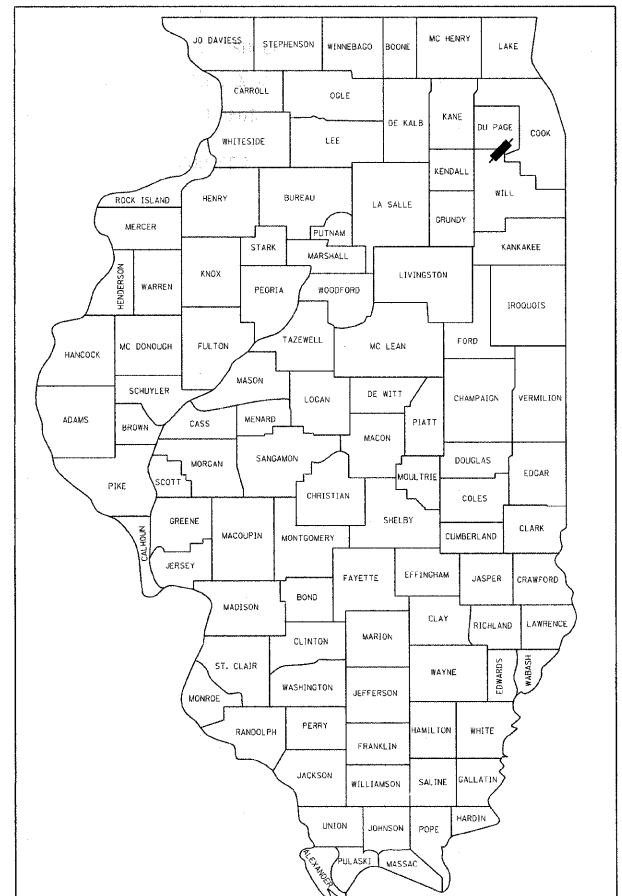
FRONTAGE ROADS
2010 ADT = 2,300 TO 4,000
SPEED LIMIT = 45 MPH



FULL SIZE PLANS HAVE BEEN PREPARED USING STANDARD ENGINEERING SCALES. REDUCED SIZED PLANS WILL NOT CONFORM TO STANDARD SCALES. IN MAKING MEASUREMENTS ON REDUCED PLANS, THE ABOVE SCALES MAY BE USED.



PLAINFIELD, DuPAGE, AND DOWNERS GROVE TOWNSHIPS



LOCATION OF SECTION INDICATED THIS: [Black Rectangle]

STATE OF ILLINOIS
DEPARTMENT OF TRANSPORTATION
DIVISION OF HIGHWAYS

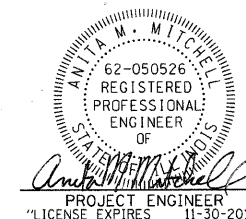
SUBMITTED MAY 23, 20 11
Diane M. O'Keefe DEPUTY DIRECTOR OF HIGHWAYS, REGION ENGINEER
July 1 20 11
Scott E. Stett, P.E. ENGINEER OF DESIGN AND ENVIRONMENT
July 1 20 11
Christine M. Reed DIRECTOR OF HIGHWAYS, CHIEF ENGINEER

PRINTED BY THE AUTHORITY OF THE STATE OF ILLINOIS



CONTACT JULIE AT 811 OR 800-892-0123 WITH THE FOLLOWING:
COUNTY = CE/045(DUPAGE), 197(WILL)
CITY-TWNSHP. = _____
SEC. & 1/4 SEC. NO. = _____
48 HOURS (2 working days) BEFORE YOU DIG

DISTRICT ONE -
I.D.O.T. PROJECT MANAGER: KEN ENG (847) 705-4247
BAXTER & WOODMAN PROJECT ENGINEER: ROBERT W. LENZINI (815) 459-1260



COPYRIGHT © 2010 BY BAXTER & WOODMAN, INC.
 STATE OF ILLINOIS - PROFESSIONAL DESIGN FIRM
 LICENSE NO. 031-00000000-0000-0000-0000-00000000
 230000
 ...:\projects\100153\100153-W0-24-11-55\CADD-SURVEY\DRAWINGS\DOCS\100153_W024-CVR.dgn
 11/20/2010 4:56:06 PM

GENERAL NOTES

1. ALL CONSTRUCTION SHALL BE DONE IN ACCORDANCE WITH THE DETAILS IN THE PLANS, THE SPECIAL PROVISIONS INCLUDED IN THE CONTRACT DOCUMENTS, AND THE LATEST EDITION OF THE FOLLOWING STATE OF ILLINOIS SPECIFICATIONS: "THE STANDARD SPECIFICATIONS FOR ROAD AND BRIDGE CONSTRUCTION" (REFERRED TO AS THE "STANDARD SPECIFICATIONS"), THE "SUPPLEMENTAL SPECIFICATIONS AND RECURRING SPECIAL PROVISIONS", THE "MANUAL ON UNIFORM TRAFFIC CONTROL DEVICES FOR STREETS AND HIGHWAYS" AND THE "MANUAL OF TEST PROCEDURES FOR MATERIALS".
2. BEFORE STARTING ANY EXCAVATION, THE CONTRACTOR SHALL CALL "J.U.L.I.E." AT (800) 892-0123 FOR FIELD LOCATIONS OF BURIED ELECTRIC, TELEPHONE, AND GAS FACILITIES. 48 HOUR NOTIFICATION REQUIRED.
3. THE CONTRACTOR WILL NOT BE ALLOWED TO SET UP A YARD OR FIELD OFFICE ON STATE PROPERTY WITHOUT THE WRITTEN PERMISSION OF THE DEPARTMENT.
4. THE CONTRACTOR SHALL COORDINATE ALL CONSTRUCTION ACTIVITIES WITH UTILITY COMPANIES, IMPROVEMENT LOCATED WITHIN THE VILLAGE OF PLAINFIELD, VILLAGE OF ROMEVILLE, VILLAGE OF BOLINGBROOK, CITY OF DARIEN, VILLAGE OF LEMONT, AND THE VILLAGE OF BURR RIDGE.
5. THE CONTRACTOR SHALL CONTACT THE DISTRICT ONE TRAFFIC CONTROL SUPERVISOR AT (847) 705-4470 A MINIMUM OF 72 HOURS PRIOR TO INSTALLATION OF TEMPORARY TRAFFIC CONTROL DEVICES.
6. THE CONTRACTOR SHALL BE RESPONSIBLE FOR VERIFYING ALL DIMENSIONS AND EXISTING CONDITIONS IN THE FIELD PRIOR TO CONSTRUCTION AND ORDERING MATERIALS.
7. ANY SIGNS OR MAIL BOXES THAT ARE IN CONFLICT WITH THE IMPROVEMENTS SHALL BE REMOVED AND REPLACED IN ACCORDANCE WITH DEPARTMENT STANDARDS AND INCLUDED IN THE COST OF EXCAVATING AND GRADING EXISTING SHOULDERS.
8. ANY SOIL DISTURBED AS A RESULT OF THIS PROJECT SHALL BE DISPOSED OF ONSITE AND NEATLY GRADED TO THE SATISFACTION OF THE ENGINEER AND INCLUDED IN THE COST OF EXCAVATING AND GRADING EXISTING SHOULDERS.
9. BEFORE STARTING ANY EXCAVATION THE STATE ELECTRICAL MAINTENANCE CONTRACTOR AND THE IDOT BUREAU OF TRAFFIC SHALL BE CONTACTED FOR LOCATIONS OF IDOT LIGHTING, SURVEILLANCE AND TRAFFIC SIGNAL UNDERGROUND EQUIPMENT.
10. BEFORE STARTING ANY EXCAVATIONS THE CONTRACTOR CURRENTLY INSTALLING THE NEW SURVEILLANCE SYSTEM UNDER CONTRACT 60E01 SHALL BE CONTACTED TO LOCATE PORTIONS OF THEIR SYSTEM ALREADY INSTALLED BUT NOT YET UNDER THE STATE MAINTENANCE AGREEMENT.

COMMITMENTS

NO COMMITMENTS

HIGHWAY STANDARDS

STANDARD NO.	DESCRIPTION
000001-06	STANDARD SYMBOLS, ABBREVIATIONS AND PATTERNS
630001-09	STEEL PLATE BEAM GUARDRAIL
630301-05	SHOULDER WIDENING FOR TYPE 1 (SPECIAL) GUARDRAIL TERMINALS
631011-07	TRAFFIC BARRIER TERMINAL, TYPE 2
635001-01	DELINEATORS
635006-03	REFLECTOR AND TERMINAL MARKER PLACEMENT
635011-02	REFLECTOR MARKER AND MOUNTING DETAILS
664001-02	CHAIN LINK FENCE
701001-02	OFF-RD OPERATIONS, 2L, 2W, MORE THAN 15' AWAY
701006-03	OFF-RD OPERATIONS, 2L, 2W, 15' TO 24" FROM PAVEMENT EDGE
701011-02	OFF-RD MOVING OPERATIONS, 2L, 2W, DAY ONLY
701101-02	OFF-RD OPERATIONS, MULTILANE, 15' (4.5m) TO 24" (600 mm) FROM PAVEMENT EDGE
701201-04	LANE CLOSURE, 2L, 2W, DAY ONLY, FOR SPEEDS ≥ 45 MPH
701301-04	LANE CLOSURE, 2L, 2W, SHORT TIME OPERATIONS
701306-03	LANE CLOSURE, 2L, 2W, SLOW MOVING OPERATIONS DAY ONLY, FOR SPEEDS ≥ 45 MPH
701311-03	LANE CLOSURE, 2L, 2W, MOVING OPERATIONS DAY ONLY
701326-04	LANE CLOSURE, 2L, 2W, PAVEMENT WIDENING, FOR SPEEDS ≥ 45 MPH
701901-01	TRAFFIC CONTROL DEVICES
720001-01	SIGN PANEL MOUNTING DETAILS
720006-02	SIGN PANEL ERECTION DETAILS

INDEX OF SHEETS

SHEET NO.	DESCRIPTION
1	TITLE SHEET
2	INDEX OF SHEETS, HIGHWAY STANDARDS, GENERAL NOTES AND COMMITMENTS
3	SUMMARY OF QUANTITIES
4	GENERAL LAYOUT
5 - 15	ROADWAY PLANS
16	DETAILS FOR DEPRESSED CURB AND GUTTER AND SHOULDER TREATMENT AT TBT TY 1 SPL (BD-34)
17	TRAFFIC CONTROL DETAILS FOR FREEWAY SINGLE & MULTI-LANE WEAVE (TC-09)
18	TRAFFIC CONTROL AND PROTECTION FOR SIDE ROADS, INTERSECTIONS, AND DRIVEWAYS (TC-10)
19	TRAFFIC CONTROL DETAILS FOR FREEWAY SHOULDER CLOSURES AND PARTIAL RAMP CLOSURES (TC-17)

DRAWN BY: BAXTER & WOODMAN, INC. STATE OF ILLINOIS PROFESSIONAL DESIGNER LICENSE NO. 184-00181 - EXPIRES 4/30/2011
 DESIGNED BY: BAXTER & WOODMAN, INC. STATE OF ILLINOIS PROFESSIONAL ENGINEER LICENSE NO. 572472011
 PROJECT: ILLINOIS STATE ROAD DISTRICT NO. 1 (ILLINOIS)



DESIGNED -	DJS	REVISED -	5-23-11 PER IDOT REVIEW
DRAWN -	UKB	REVISED -	
CHECKED -	LDH	REVISED -	
DATE -	5-03-11	FILE -	100153_W024-GEN-NOTE.sht

**STATE OF ILLINOIS
DEPARTMENT OF TRANSPORTATION**

**INTERSTATE 55 - US 6 TO WEST OF INTERSTATE 294
GUARDRAIL IMPROVEMENTS**
INDEX OF SHEETS, HIGHWAY STANDARDS, GENERAL NOTES AND COMMITMENTS
 SCALE: STA. TO STA.

F.A.I. RTE.	SECTION	COUNTY	TOTAL SHEETS	SHEET NO.
55	2011-041-GRR	DUPAGE/WILL	19	2
CONTRACT NO. 60P47				

SUMMARY OF QUANTITIES			100% STATE URBAN	CONSTRUCTION TYPE CODE			
CODE NO.	ITEM DESCRIPTION	UNIT	TOTAL QUANTITY	WILL COUNTY 0021 QUANTITY	DUPAGE COUNTY 0021 QUANTITY		
* 20200600	EXCAVATING AND GRADING EXISTING SHOULDER	UNIT	31	13	18		
21101615	TOPSOIL FURNISH AND PLACE, 4"	SQ YD	2,928	1,213	1,715		
25000210	SEEDING, CLASS 2A	ACRE	0.62	0.26	0.36		
25000400	NITROGEN FERTILIZER NUTRIENT	POUND	57	24	33		
25000500	PHOSPHORUS FERTILIZER NUTRIENT	POUND	57	24	33		
25000600	POTASSIUM FERTILIZER NUTRIENT	POUND	57	24	33		
25100630	EROSION CONTROL BLANKET	SQ YD	2,928	1,213	1,715		
* 48101620	AGGREGATE SHOULDERS, TYPE B 10"	SQ YD	1,214	444	770		
* 48102100	AGGREGATE WEDGE SHOULDER, TYPE B	TON	185	185	-		
63000001	STEEL PLATE BEAM GUARDRAIL, TYPE A, 6 FOOT POSTS	FOOT	1,412.5	537.5	875.0		
63000003	STEEL PLATE BEAM GUARDRAIL, TYPE A, 9 FOOT POSTS	FOOT	687.5	212.5	475.0		
63100045	TRAFFIC BARRIER TERMINAL, TYPE 2	EACH	6	3	3		
63100167	TRAFFIC BARRIER TERMINAL, TYPE 1 (SPECIAL) TANGENT	EACH	9	5	4		
63200310	GUARDRAIL REMOVAL	FOOT	150	-	150		
67000400	ENGINEER'S FIELD OFFICE, TYPE A	CAL MO	4	2	2		
67100100	MOBILIZATION	L SUM	1	0.5	0.5		
78200410	GUARDRAIL MARKERS, TYPE A	EACH	36	16	20		
78201000	TERMINAL MARKER - DIRECT APPLIED	EACH	9	5	4		
* X2020110	GRADING AND SHAPING SHOULDERS	UNIT	66	66	-		
X2503100	MOWING	UNIT	265	110	155		
X6640306	CHAIN LINK FENCE TO BE RELOCATED	FOOT	695	-	695		
X7011015	TRAFFIC CONTROL AND PROTECTION (EXPRESSWAYS)	L SUM	1	0.5	0.5		

* INDICATES SPECIALTY ITEM

COPYRIGHT © 2011 BY BAXTER & WOODMAN, INC. PROJECT: I-55/US 6 WEST OF I-294. DATE: 5/23/2011. 8:03:17 AM. I:\PROJECTS\10063\W024\B&W.TBI\10063\W024\SMQTY.dgn



DESIGNED - DJS	REVISED - 5-23-11 PER IDOT REVIEW
DRAWN - UKB	REVISED -
CHECKED - LDH	REVISED -
DATE - 5-03-11	FILE - 100153-W024-SMQTY.dgn

**STATE OF ILLINOIS
DEPARTMENT OF TRANSPORTATION**

**INTERSTATE 55 - US 6 TO WEST OF INTERSTATE 294
GUARDRAIL IMPROVEMENTS
SUMMARY OF QUANTITIES**

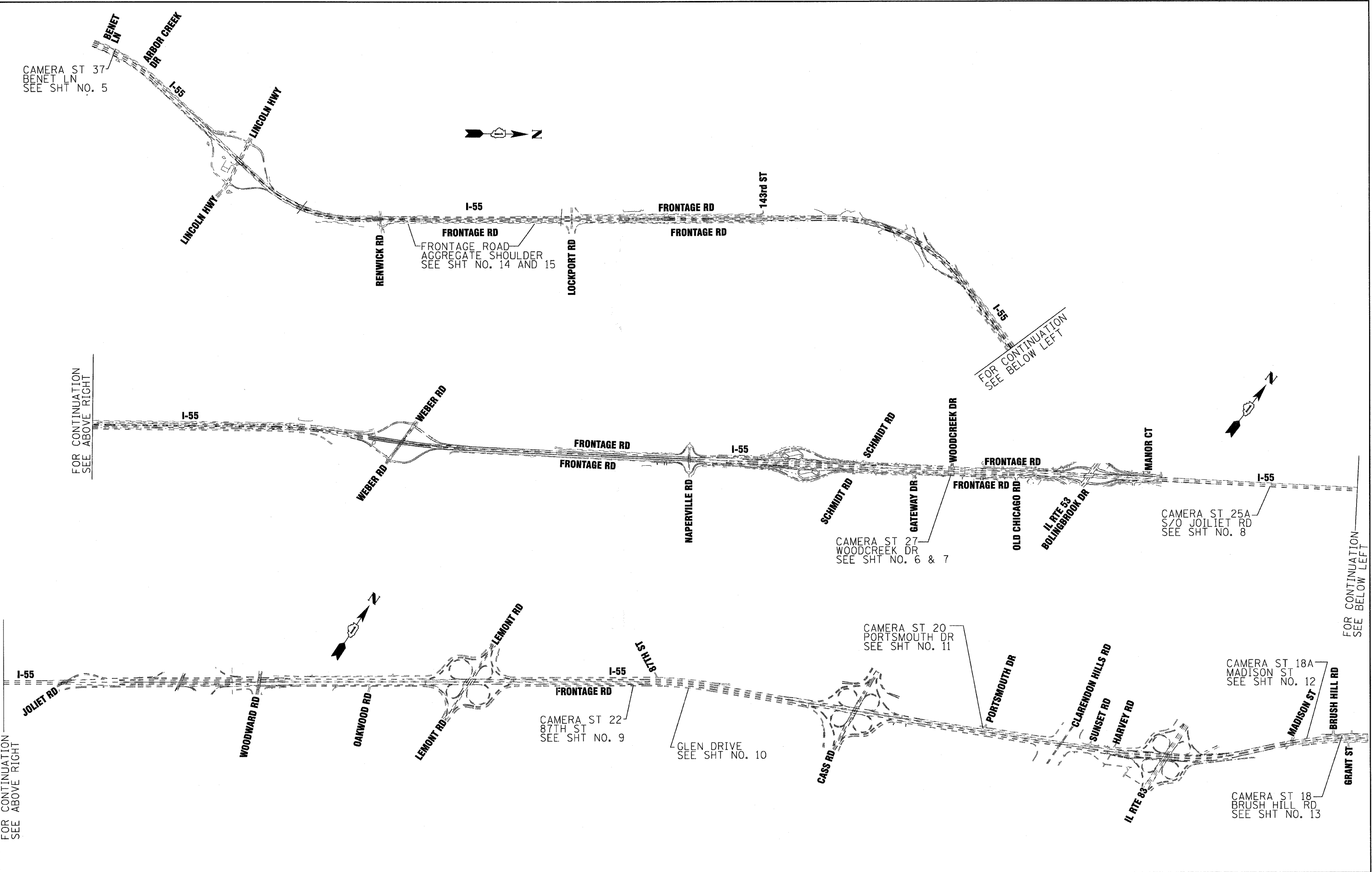
SCALE: STA. TO STA.

F.A.I. RTE.	SECTION	COUNTY	TOTAL SHEETS	SHEET NO.
55	2011-041-GRR	DUPAGE/WILL	19	3
FED. ROAD DIST. NO. 1 ILLINOIS			CONTRACT NO. 60P47	

CAMERA ST 37
BENET LN
SEE SHT NO. 5

FOR CONTINUATION
SEE ABOVE RIGHT

FOR CONTINUATION
SEE ABOVE RIGHT



FOR CONTINUATION
SEE BELOW LEFT

FOR CONTINUATION
SEE ABOVE RIGHT



DESIGNED -	DJS	REVISED -	
DRAWN -	UKB	REVISED -	
CHECKED -	LDH	REVISED -	
DATE -	5-03-11	FILE -	100153-W0-24-OLYOUT.dgn

STATE OF ILLINOIS
DEPARTMENT OF TRANSPORTATION

INTERSTATE 55 - US 6 TO WEST OF INTERSTATE 294
GUARDRAIL IMPROVEMENTS
GENERAL LAYOUT

SCALE: 1"=1200'

STA. TO STA.

F.A.I. RTE.	SECTION	COUNTY	TOTAL SHEETS	SHEET NO.
55	2011-041-GRR	DUPAGE/WILL	19	4
FED. ROAD DIST. NO. 1 [ILLINOIS]			CONTRACT NO. 60P47	

FOR CONTINUATION
SEE ABOVE RIGHT

FOR CONTINUATION
SEE ABOVE RIGHT

CAMERA ST 18A
MADISON ST
SEE SHT NO. 12

CAMERA ST 18
BRUSH HILL RD
SEE SHT NO. 13

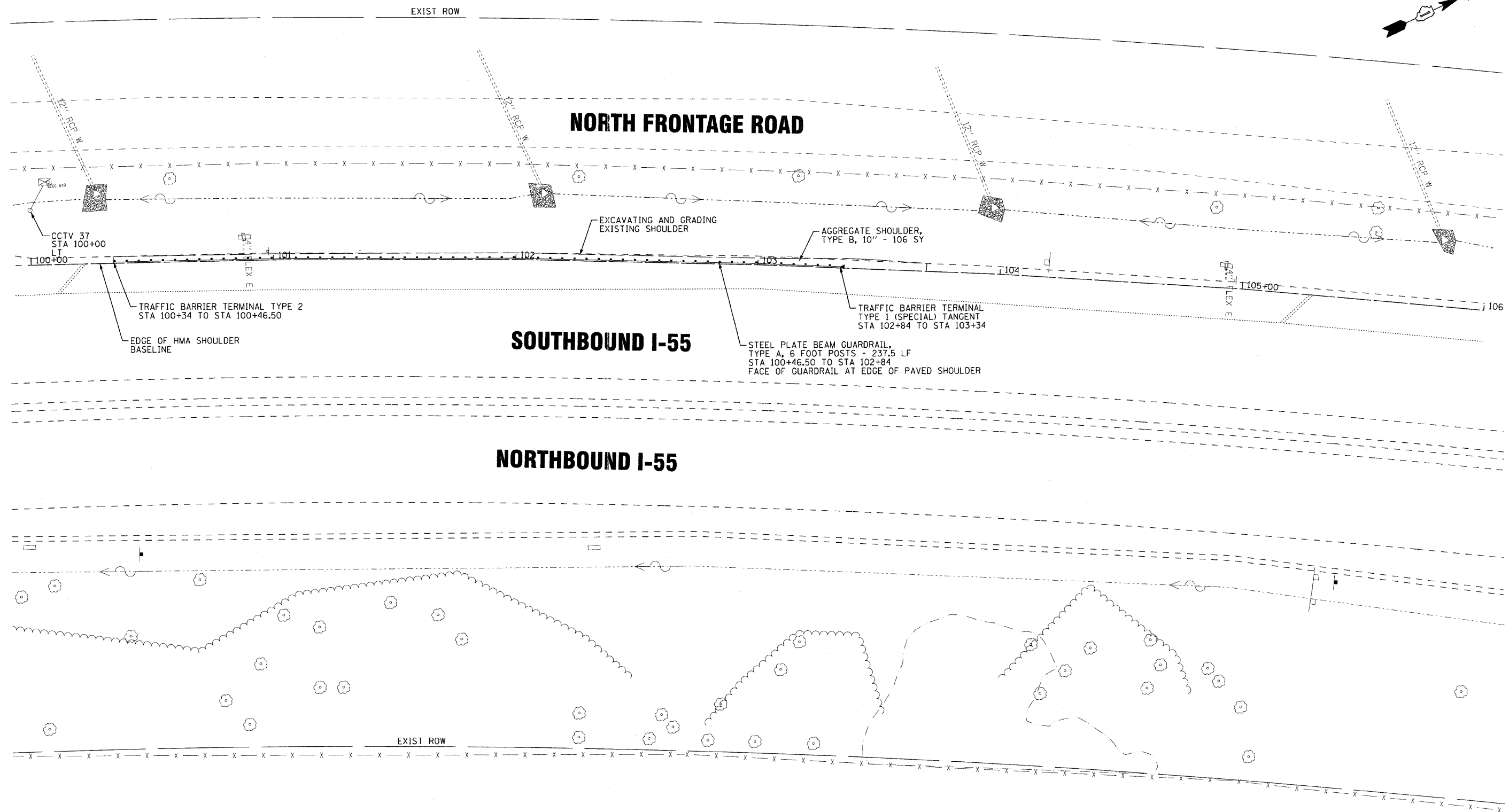
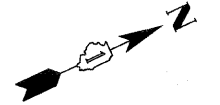
CAMERA ST 27
WOODCREEK DR
SEE SHT NO. 6 & 7

CAMERA ST 22
87TH ST
SEE SHT NO. 9

GLEN DRIVE
SEE SHT NO. 10

CAMERA ST 20
PORTSMOUTH DR
SEE SHT NO. 11

CAMERA ST 25A
S/O JOILLET RD
SEE SHT NO. 8



COPYRIGHT © 2010 BY BAXTER & WOODMAN, INC.
 STATE OF ILLINOIS - PROFESSIONAL DESIGN FIRM
 LICENSE NO. - 184-00121 - EXPIRES 4/30/2011
 509 298 0111 OVER 1100 S. WOODSTOCK AVE. CHICAGO, IL 60623-2101

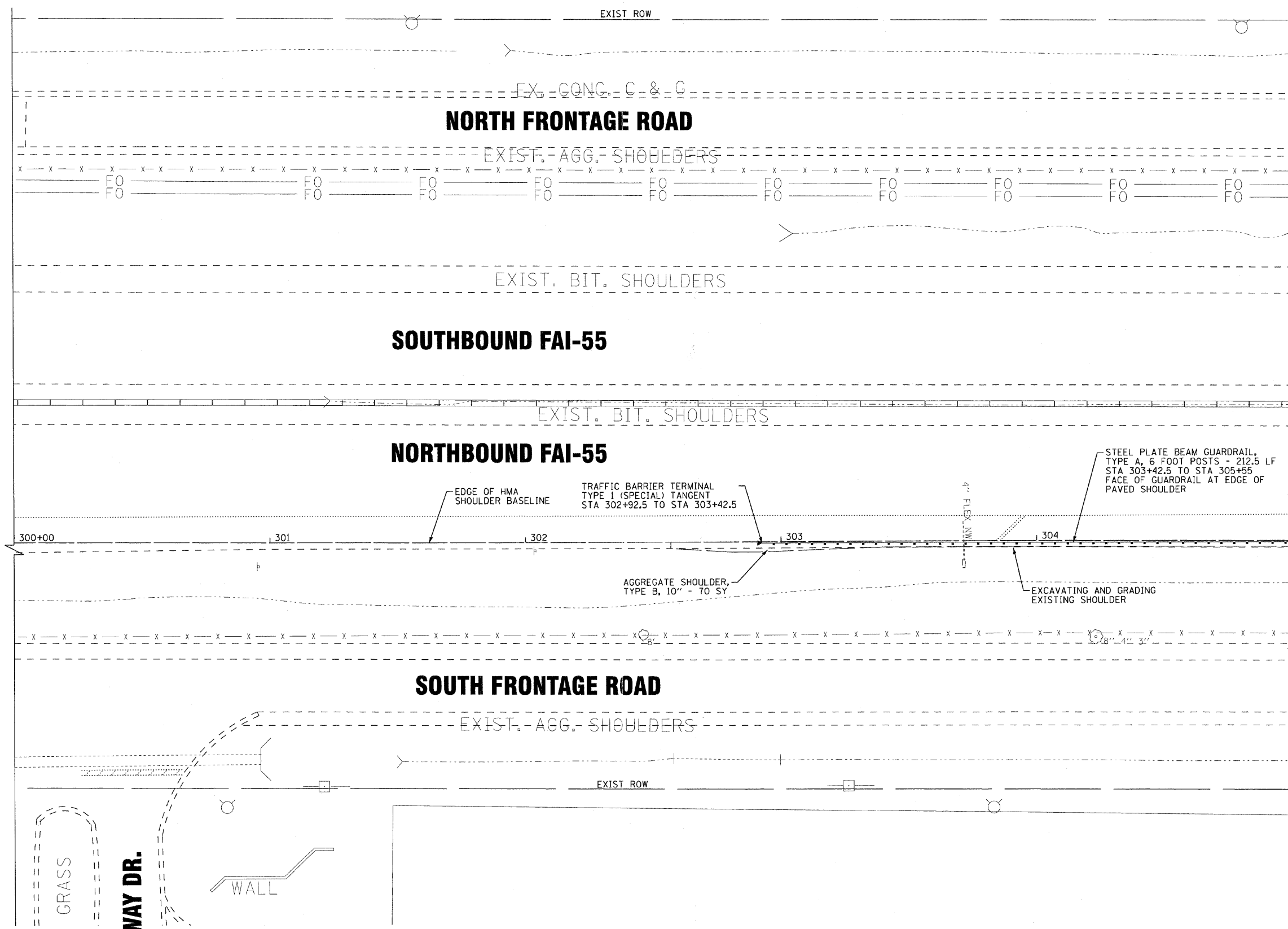
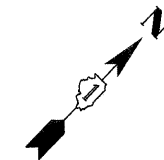


DESIGNED - AMM	REVISED - 5-23-11 PER IDOT REVIEW
DRAWN - UKB	REVISED -
CHECKED - LDH	REVISED -
DATE - 5-03-11	FILE - 100153-W024-PLAN1.dgn

STATE OF ILLINOIS
DEPARTMENT OF TRANSPORTATION

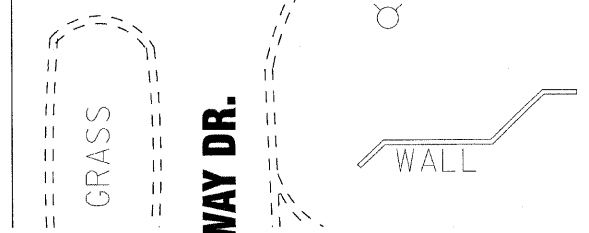
INTERSTATE 55 - US 6 TO WEST OF INTERSTATE 294
GUARDRAIL IMPROVEMENTS
CAMERA ST 37 - BENET LN
 SCALE: 1"=20' STA. 100+00 TO STA. 106+00

F.A.I. RTE.	SECTION	COUNTY	TOTAL SHEETS	SHEET NO.
55	2011-041-GRR	DUPAGE/WILL	19	5
FED. ROAD DIST. NO. 1 [ILLINOIS]			CONTRACT NO. 60P47	



MATCH LINE STA. 305+00 - SEE SHEET NO. 7

COPYRIGHT © 2011 BY BAXTER & WOODMAN, INC.
 STATE OF ILLINOIS - PROFESSIONAL DESIGN FIRM
 LICENSE NO. 184-00191 - EXPIRES 4/30/2011
 5/23/2011



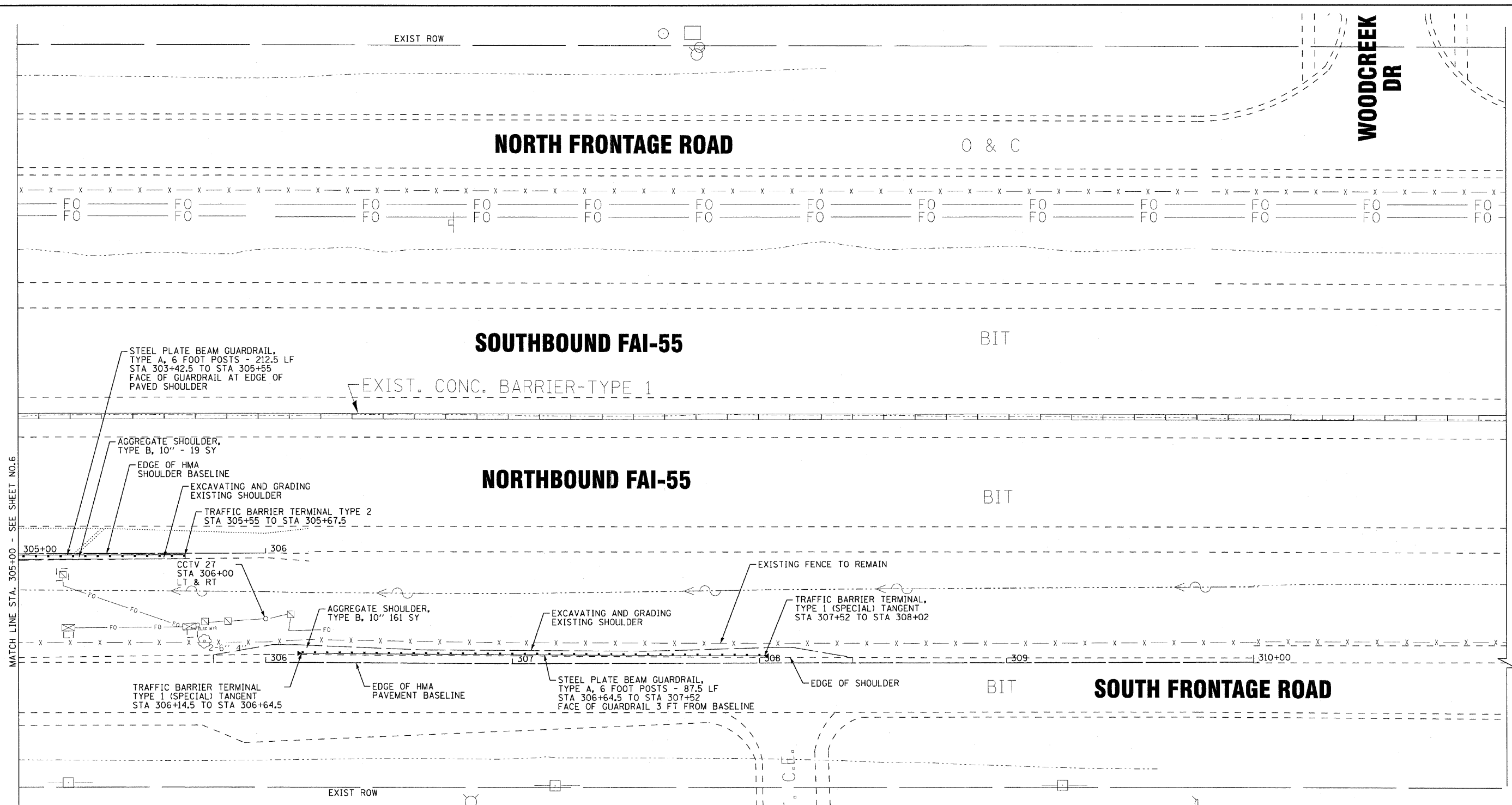
DESIGNED - AMM	REVISED -5-23-11 PER IDOT REVIEW
DRAWN - UKB	REVISED -
CHECKED - LDH	REVISED -
DATE - 5-03-11	FILE - 100153-W024-PLAN2.dgn

**STATE OF ILLINOIS
DEPARTMENT OF TRANSPORTATION**

**INTERSTATE 55 - US 6 TO WEST OF INTERSTATE 294
GUARDRAIL IMPROVEMENTS
CAMERA ST 27 - WOODCREEK DR**

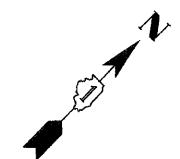
SCALE: 1"=20' STA. 300+00 TO STA. 305+00

F.A.I. RTE.	SECTION	COUNTY	TOTAL SHEETS	SHEET NO.
55	2011-041-GRR	DUPAGE/WILL	19	6
FED. ROAD DIST. NO. 1 (ILLINOIS)				CONTRACT NO. 60P47



WOODCREEK DR

MATCH LINE STA. 305+00 - SEE SHEET NO. 6



COPYRIGHT © 2010 BY BAXTER & WOODMAN, INC.
 STATE OF ILLINOIS - PROFESSIONAL DESIGN FIRM
 230 W. WASHINGTON ST., SUITE 1000, CHICAGO, IL 60601-1000
 312.467.1200 FAX 312.467.1201
 5/23/11 AM



DESIGNED - AMM	REVISED -5-23-11 PER IDOT REVIEW
DRAWN - LKB	REVISED -
CHECKED - LDH	REVISED -
DATE - 5-03-11	FILE - 100153-W024-PLAN2.dgn

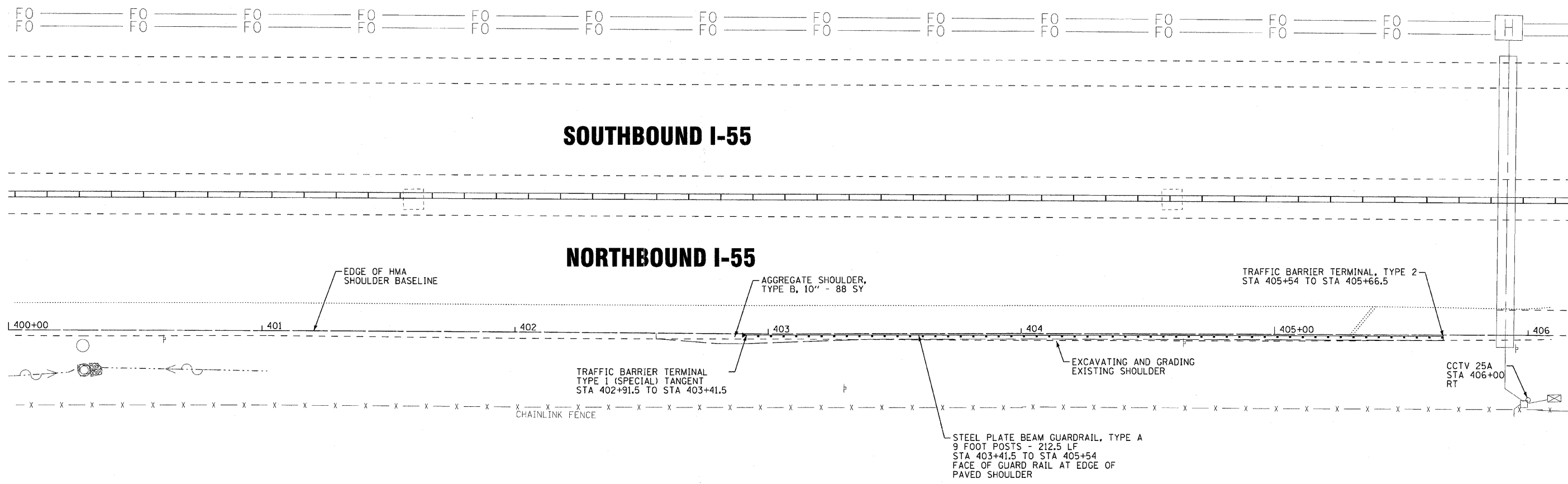
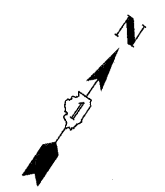
**STATE OF ILLINOIS
DEPARTMENT OF TRANSPORTATION**

**INTERSTATE 55 - US 6 TO WEST OF INTERSTATE 294
GUARDRAIL IMPROVEMENTS
CAMERA ST 27 - WOODCREEK DR**

SCALE: 1"=20'

STA. 305+00 TO STA. 310+00

F.A.I. RTE.	SECTION	COUNTY	TOTAL SHEETS	SHEET NO.
55	2011-041-GRR	DUPAGE/WILL	19	7
FED. ROAD DIST. NO. 1 ILLINOIS				CONTRACT NO. 60P47



COPYRIGHT © 2010 BY BAXTER & WOODMAN, INC.
 STATE OF ILLINOIS - PROFESSIONAL DESIGN FIRM
 No. 12-02237001
 2300MB
 ..:\projects\100153-W024\PLAN3.dgn
 ..:\projects\100153-W024\PLAN3.dgn
 ..:\projects\100153-W024\PLAN3.dgn

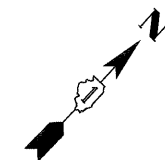
	DESIGNED - AMM	REVISED - 5-23-11 PER IDOT REVIEW
	DRAWN - UKB	REVISED -
	CHECKED - LDH	REVISED -
	DATE - 5-03-11	FILE - 100153-W024-PLAN3.dgn

STATE OF ILLINOIS
DEPARTMENT OF TRANSPORTATION

INTERSTATE 55 - US 6 TO WEST OF INTERSTATE 294
GUARDRAIL IMPROVEMENTS
CAMERA ST 25a - SO JOLIET RD

SCALE: 1"=20'

F.A.I. RTE.	SECTION	COUNTY	TOTAL SHEETS	SHEET NO.
55	2011-041-GRR	DUPAGE/WILL	19	8
FED. ROAD DIST. NO. 1 ILLINOIS			CONTRACT NO. 60P47	

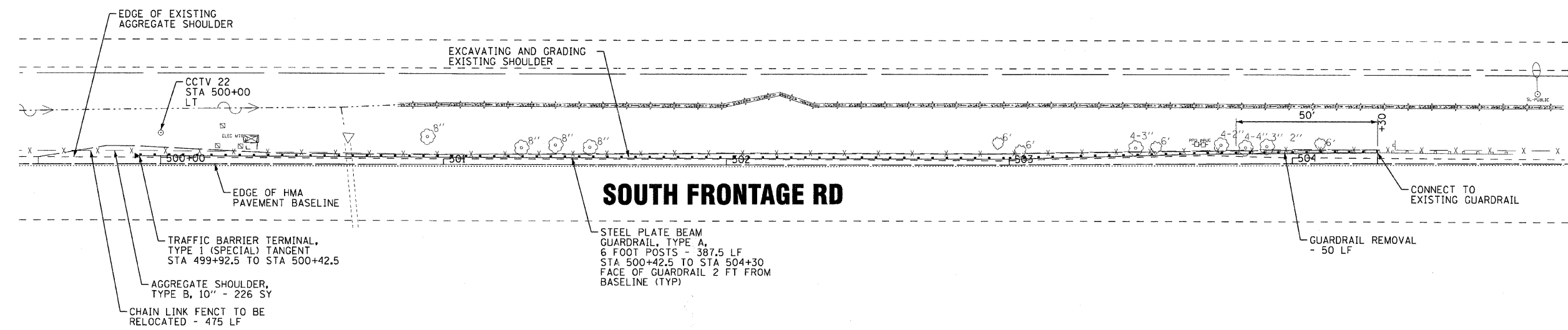


NORTH FRONTAGE RD

SOUTHBOUND I-55

NORTHBOUND I-55

SOUTH FRONTAGE RD



COPYRIGHT © 2011 BY BAXTER & WOODMAN, INC.
 STATE OF ILLINOIS - PROFESSIONAL DESIGN FIRM
 230463 NO. - 08-07-2011
 PROJECT: I-55/US 6 INTERCHANGE
 DRAWING: W024-PLAN4.dgn



DESIGNED - AMM	REVISED -5-23-11 PER IDOT REVIEW
DRAWN - UKB	REVISED -
CHECKED - LDH	REVISED -
DATE - 5-03-11	FILE - 100153-W024-PLAN4.dgn

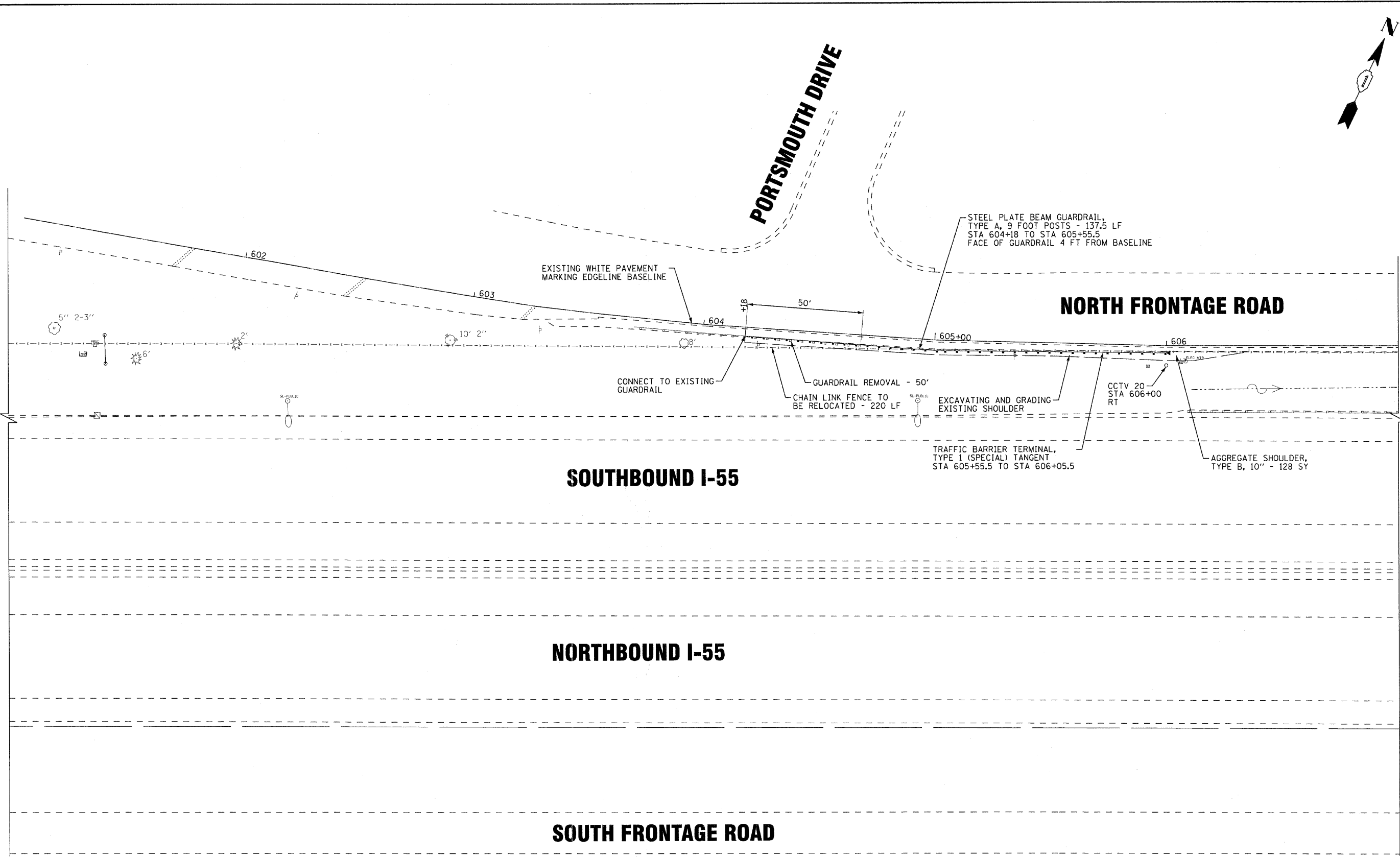
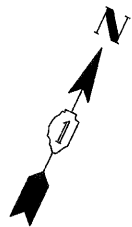
**STATE OF ILLINOIS
DEPARTMENT OF TRANSPORTATION**

**INTERSTATE 55 - US 6 TO WEST OF INTERSTATE 294
GUARDRAIL IMPROVEMENTS
CAMERA ST 22 - 87th ST**

SCALE: 1"=20'

STA. 500+00 TO STA. 505+00

F.A.I. RTE.	SECTION	COUNTY	TOTAL SHEETS	SHEET NO.
55	2011-041-GRR	DUPAGE/WILL	19	9
FED. ROAD DIST. NO. 1 ILLINOIS			CONTRACT NO. 60P47	



COPYRIGHT © 2010 BY BAXTER & WOODMAN, INC.
 ...dot.ctb...
 STATE OF ILLINOIS PROFESSIONAL ENGINEER
 231045 5/21/2011 8:27:42 AM I:\Projects\I-55\Drawings\DOT\00153-W024-PLAN6.dgn



DESIGNED - AMM	REVISED - 5-23-11 PER IDOT REVIEW
DRAWN - LKB	REVISED -
CHECKED - LDH	REVISED -
DATE - 5-03-11	FILE - I00153-W024-PLAN6.dgn

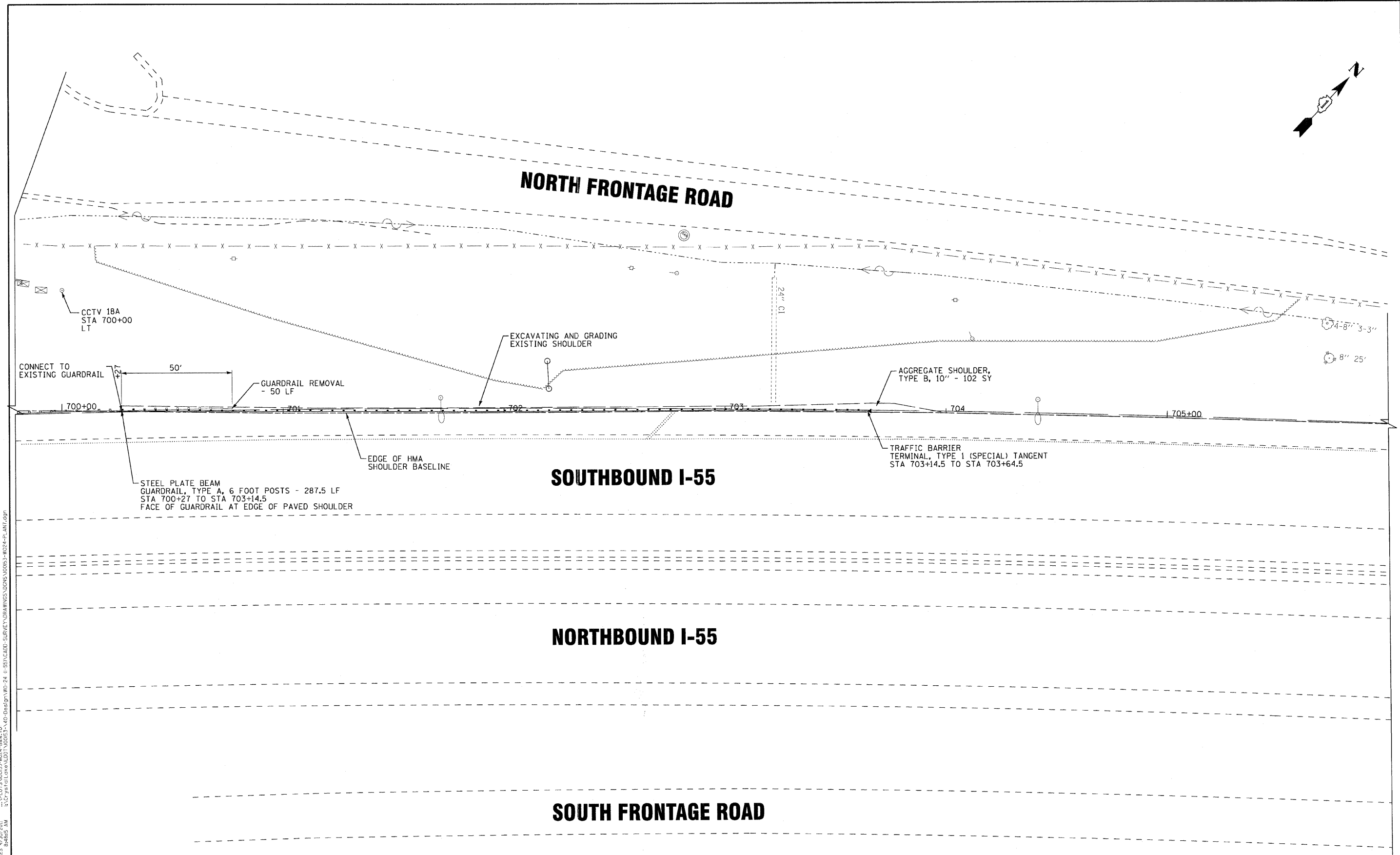
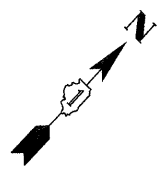
STATE OF ILLINOIS
DEPARTMENT OF TRANSPORTATION

INTERSTATE 55 - US 6 TO WEST OF INTERSTATE 294
GUARDRAIL IMPROVEMENTS
CAMERA ST 20 - PORTSMOUTH DRIVE

SCALE: 1"=20'

STA. 601+00 TO STA. 607+00

F.A.I. RTE. 55	SECTION 2011-041-CRR	COUNTY DUPAGE/WILL	TOTAL SHEETS 19	SHEET NO. 11
FED. ROAD DIST. NO. 1 ILLINOIS			CONTRACT NO. 60P47	



COPYRIGHT © 2010 BY BAXTER & WOODMAN, INC.
 STATE OF ILLINOIS - PROFESSIONAL DESIGN FIRM
 LICENSE NO. 184-00181 - EXPIRES 4/30/2011
 5/23/2010 8:46:55 AM
 \\s0101\dwg\100153\W024-PLANT.dgn
 \\s0101\dwg\100153\W024-PLANT.dgn
 \\s0101\dwg\100153\W024-PLANT.dgn



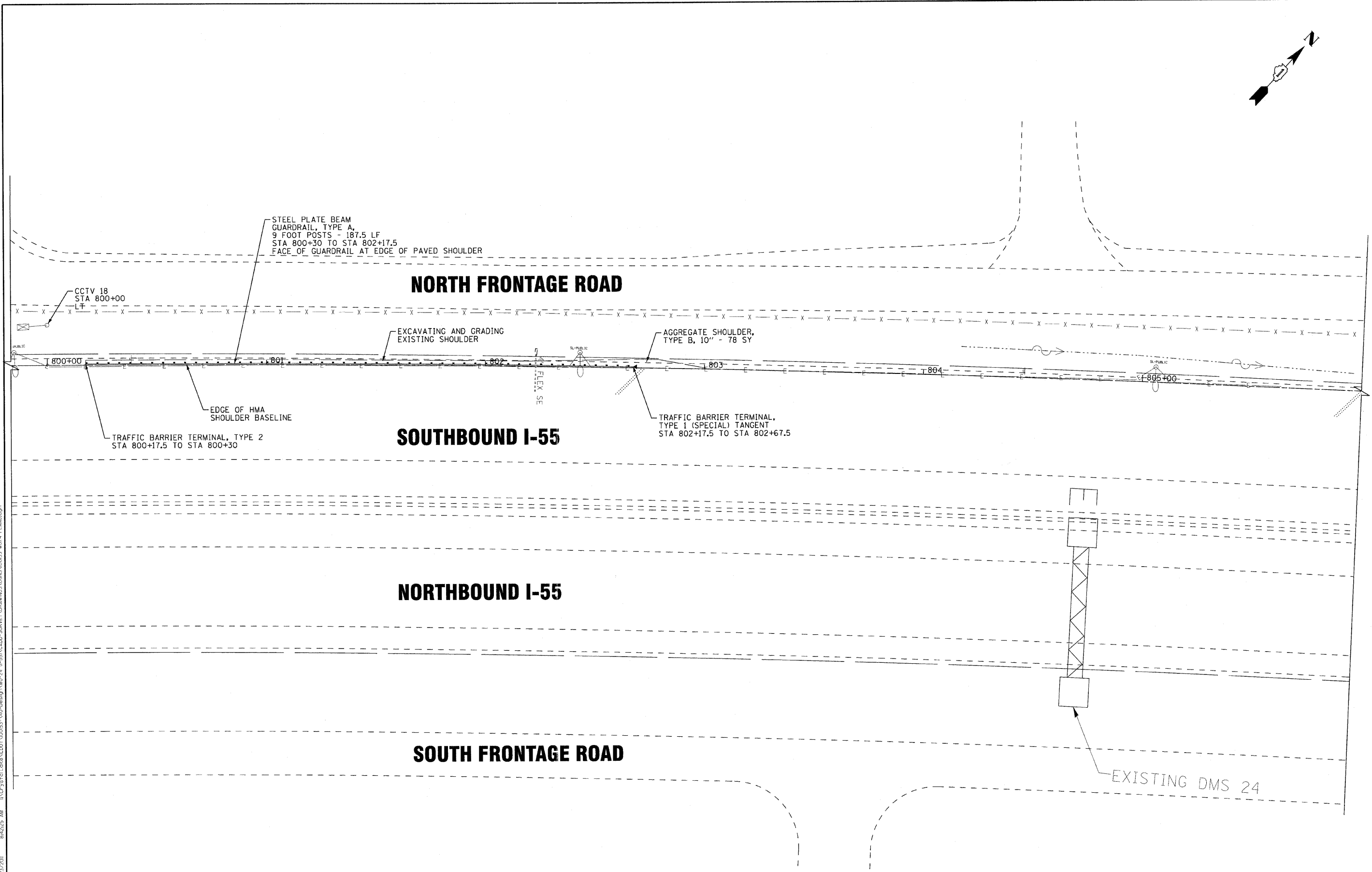
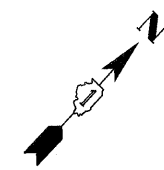
DESIGNED - AMM	REVISED -5-23-11 PER IDOT REVIEW
DRAWN - UKB	REVISED -
CHECKED - LDH	REVISED -
DATE - 5-03-11	FILE - 100153-W024-PLANT.dgn

STATE OF ILLINOIS
DEPARTMENT OF TRANSPORTATION

INTERSTATE 55 - US 6 TO WEST OF INTERSTATE 294
GUARDRAIL IMPROVEMENTS
CAMERA ST 18a - MADISON ST

SCALE: 1"=20' STA. 700+00 TO STA. 706+00

F.A.I. RTE.	SECTION	COUNTY	TOTAL SHEETS	SHEET NO.
55	2011-041-GRR	DUPAGE/WILL	19	12
FED. ROAD DIST. NO. 1 ILLINOIS			CONTRACT NO. 60P47	



COPYRIGHT © 2010 BY BAXTER & WOODMAN, INC.
 ALL RIGHTS RESERVED. NO PART OF THIS DOCUMENT IS TO BE REPRODUCED OR TRANSMITTED IN ANY FORM OR BY ANY MEANS, ELECTRONIC OR MECHANICAL, INCLUDING PHOTOCOPYING, RECORDING, OR BY ANY INFORMATION STORAGE AND RETRIEVAL SYSTEM.
 LICENSE NO. 184-00001 - EXPIRES 4/30/2011
 5/23/2011 8:42:25 AM
 I:\Projects\100153\100153-W024-PLAN8.dgn



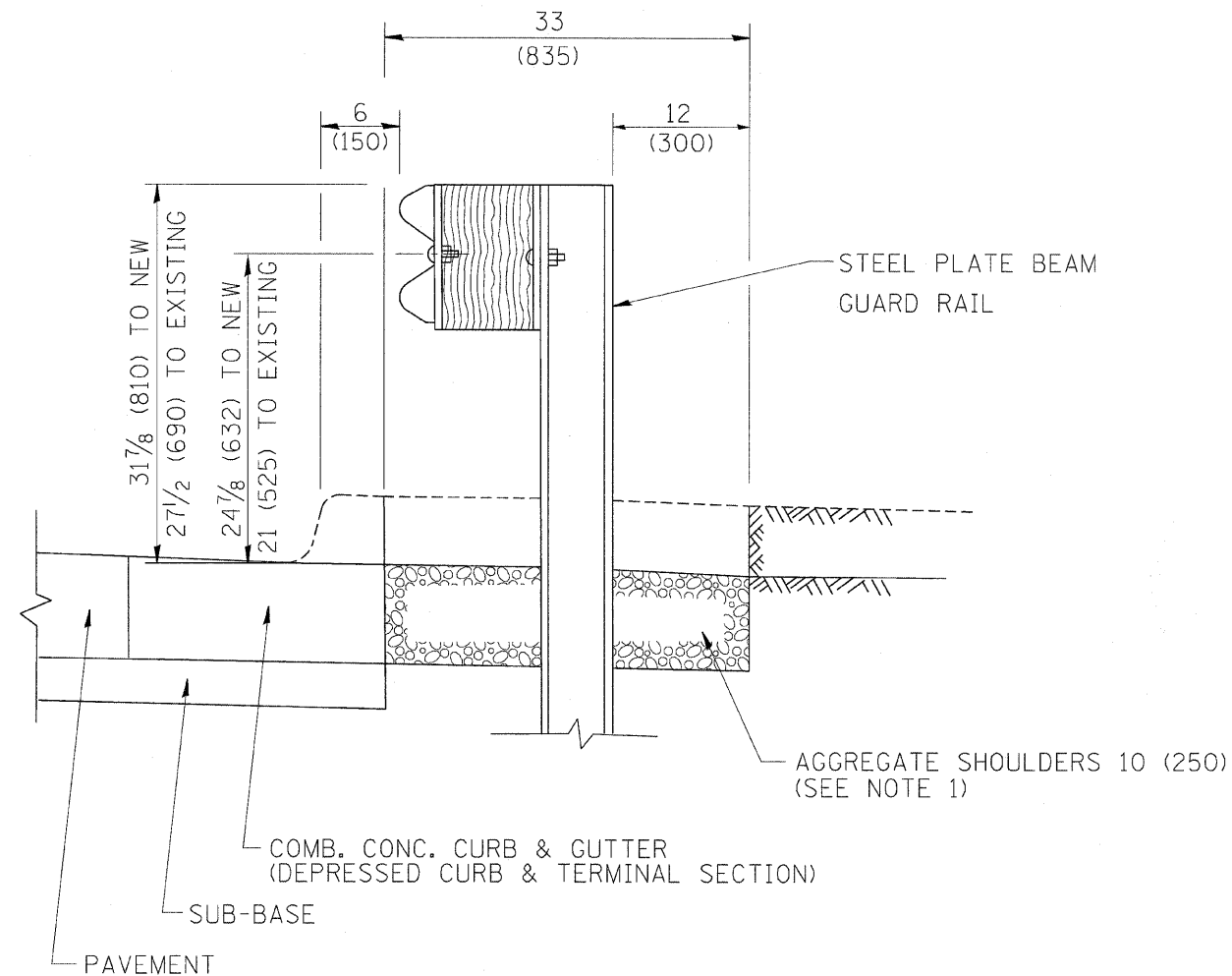
DESIGNED - AMM	REVISED - 5-23-11 PER IDOT REVIEW
DRAWN - UKB	REVISED -
CHECKED - LDH	REVISED -
DATE - 5-03-11	FILE - 100153-W024-PLAN8.dgn

STATE OF ILLINOIS
DEPARTMENT OF TRANSPORTATION

INTERSTATE 55 - US 6 TO WEST OF INTERSTATE 294
GUARDRAIL IMPROVEMENTS
CAMERA ST 18 - BRUSH HILL RD

SCALE: 1"=20' STA. 800+00 TO STA. 806+00

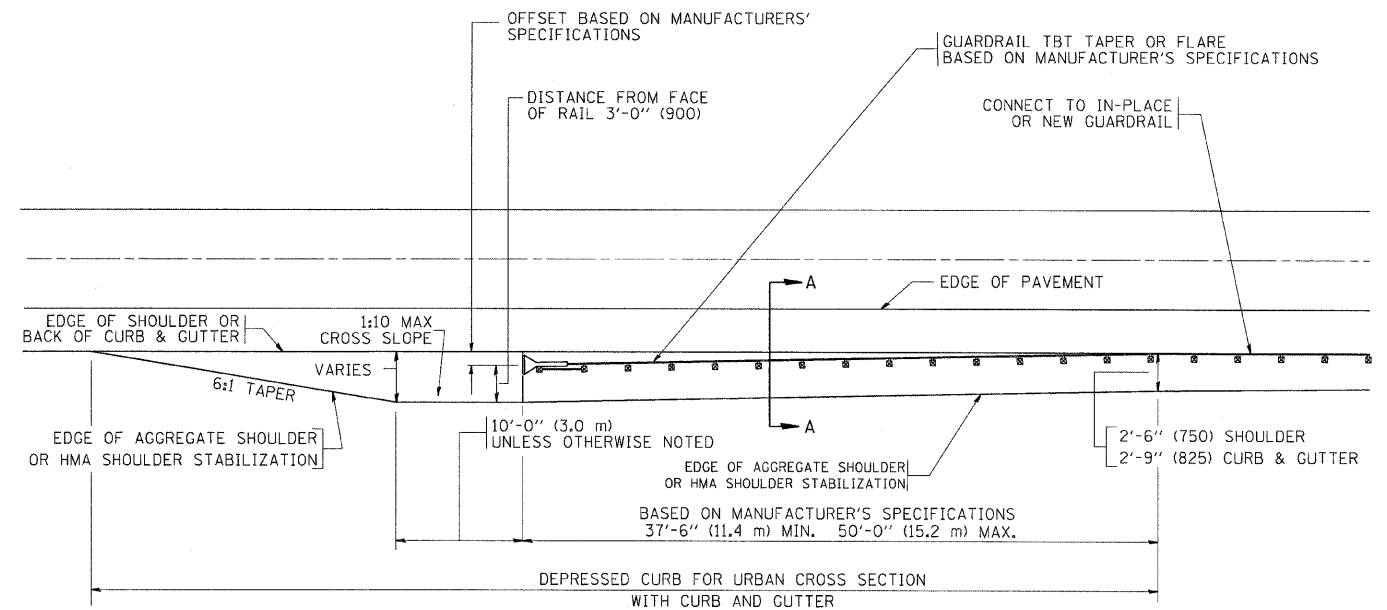
F.A.I. RTE. 55	SECTION 2011-041-GRR	COUNTY	TOTAL SHEETS 19	SHEET NO. 13
FED. ROAD DIST. NO. 1 ILLINOIS		DUPAGE/WILL	CONTRACT NO. 60P47	



SECTION A-A

- NOTES:
1. THE AGGREGATE SHOULDER, 10" OR HMA SHOULDER, 6" (IF REQUIRED) SHALL EXTEND UNDER THE TRAFFIC BARRIER TERMINAL.
 2. "EXISTING" GUARDRAIL REFERS TO CONNECTING TERMINAL SECTION TO GUARD RAILING PRIOR TO THE MIDWEST GUARDRAIL SYSTEM.
 3. THE CONTRACTOR SHALL VERIFY THE TYPE/HEIGHT OF GUARDRAIL IN-PLACE BEFORE ORDERING THE NEW TERMINAL SECTION. COST INCLUDED WITH THE COST OF THE TERMINAL. THE TERMINAL SECTION HEIGHT TO BE PLACED MUST MATCH THE HEIGHT OF THE IN-PLACE GUARDRAIL.

DETAILS FOR STEEL PLATE BEAM
 GUARD RAIL ADJACENT TO CURB AND GUTTER
 [FOR ROADWAY SPEED 35 MPH (60 kmh) TO 45 MPH (70 kmh)]



DEPRESSED CURB AND GUTTER AND
 SHOULDER TREATMENT AT TBT TY. 1 SPL.

BASIS OF PAYMENT: HMA SHOULDERS 6 (150) (IF REQUIRED) WILL BE PAID FOR AT THE CONTRACT UNIT PRICE PER SQUARE YARD (SQUARE METER) FOR "HOT-MIX ASPHALT SHOULDERS 6" (150 mm)".

STEEL PLATE BEAM GUARD RAIL AND TRAFFIC BARRIER TERMINAL, OF THE TYPE SPECIFIED WILL BE PAID FOR SEPARATELY.

TBT = TRAFFIC BARRIER TERMINAL

ALL DIMENSIONS ARE IN INCHES (MILLIMETERS) UNLESS OTHERWISE SHOWN.

FILE NAME =	USER NAME = drvakosgn	DESIGNED - M. DE YONG	REVISED - E. GOMEZ 08-28-00
c:\pwork\p\WIDOT\DRIVAKOSON\d2108315\634.dgn		DRAWN -	REVISED - R. BORO 01-01-07
	PLOT SCALE = 49.9999' / IN.	CHECKED -	REVISED - R. BORO 12-08-2008
	PLOT DATE = 9/21/2009	DATE - 09-22-90	REVISED - R. BORO 09-14-2009

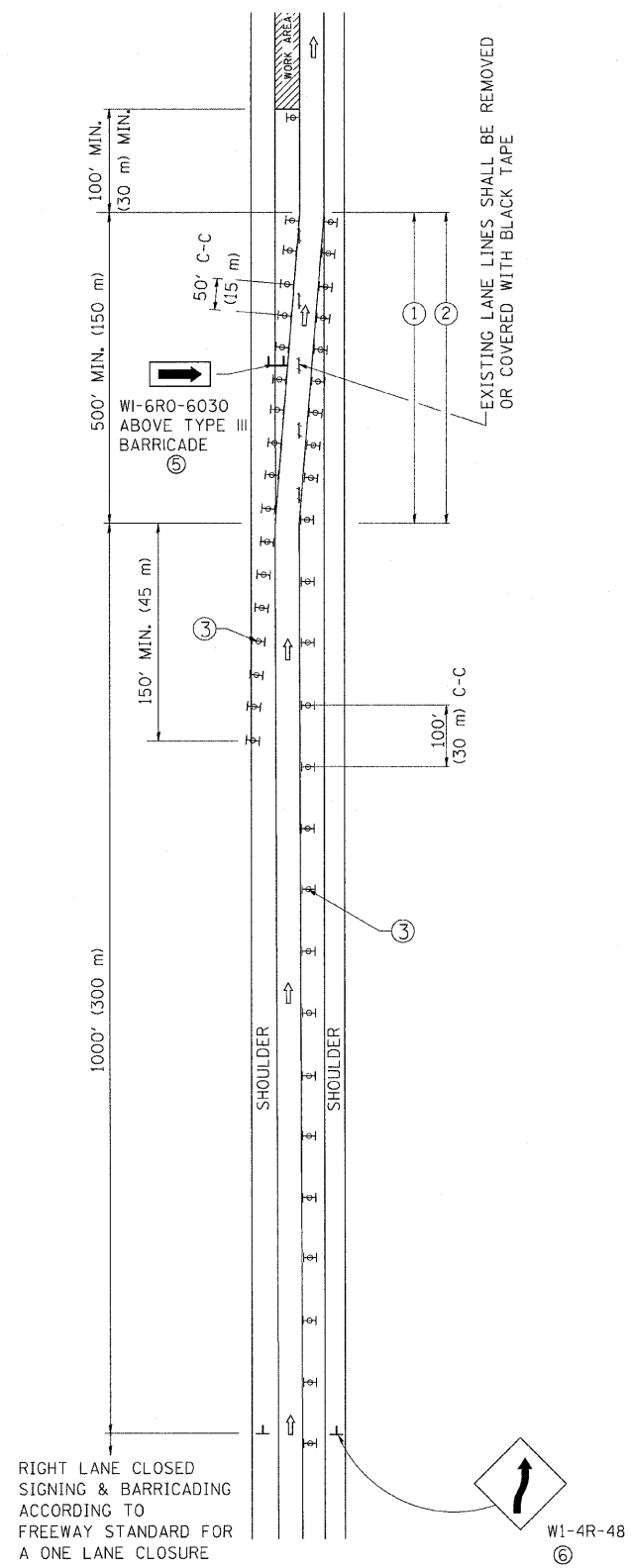
STATE OF ILLINOIS
 DEPARTMENT OF TRANSPORTATION

DETAILS FOR DEPRESSED CURB & GUTTER AND
 SHOULDER TREATMENT AT TBT TY 1 SPL.

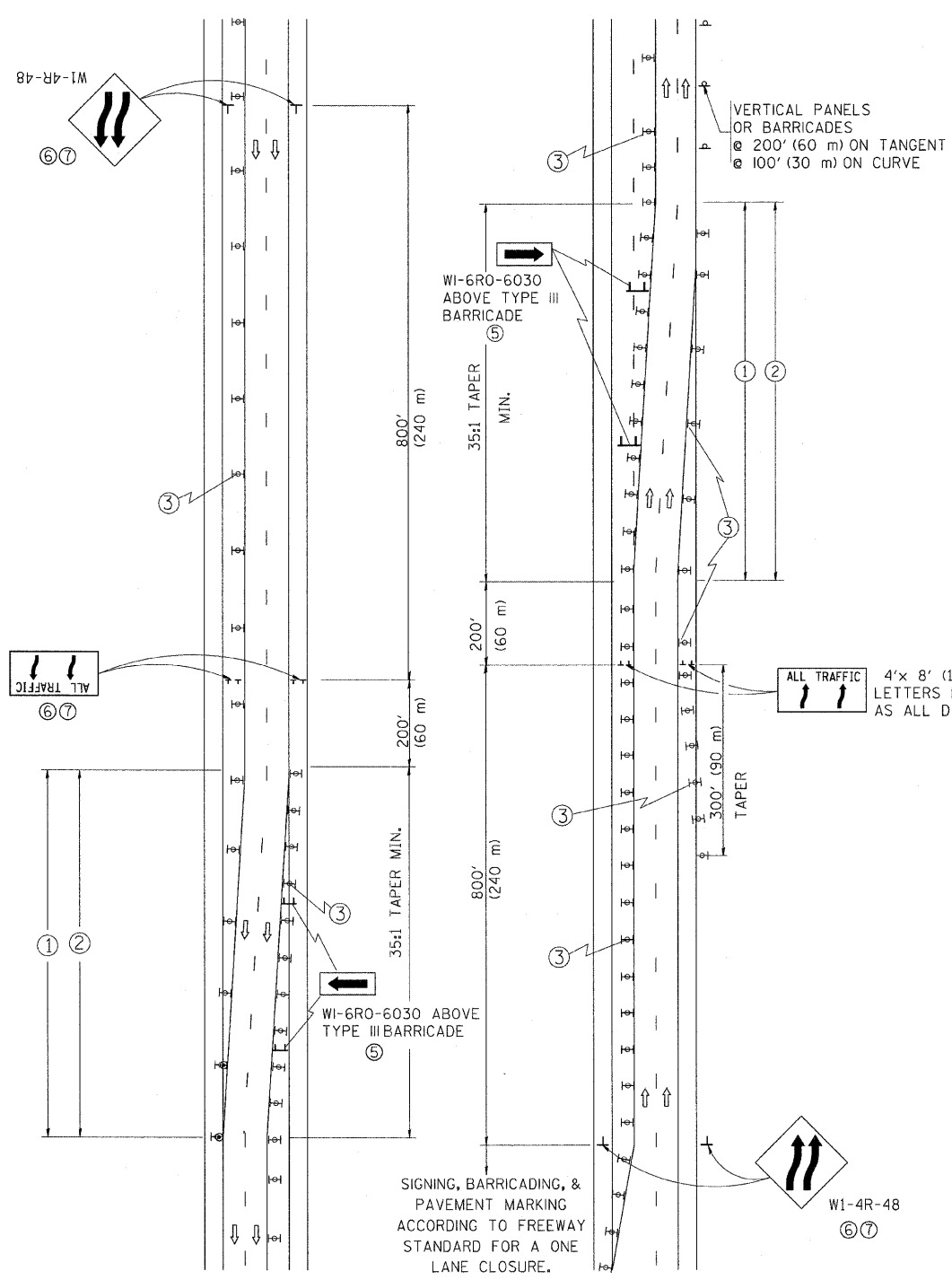
SCALE: NONE SHEET NO. 1 OF 1 SHEETS STA. TO STA.

F.A.I. RTE.	SECTION	COUNTY	TOTAL SHEETS	SHEET NO.
55	2011-041-GRR	DuPAGE/WILL	19	16
BD600-10 (BD 34)			CONTRACT NO. 60P47	
FED. ROAD DIST. NO. 1 ILLINOIS FED. AID PROJECT				

SINGLE LANE WEAVE



MULTI-LANE WEAVE



GENERAL NOTES

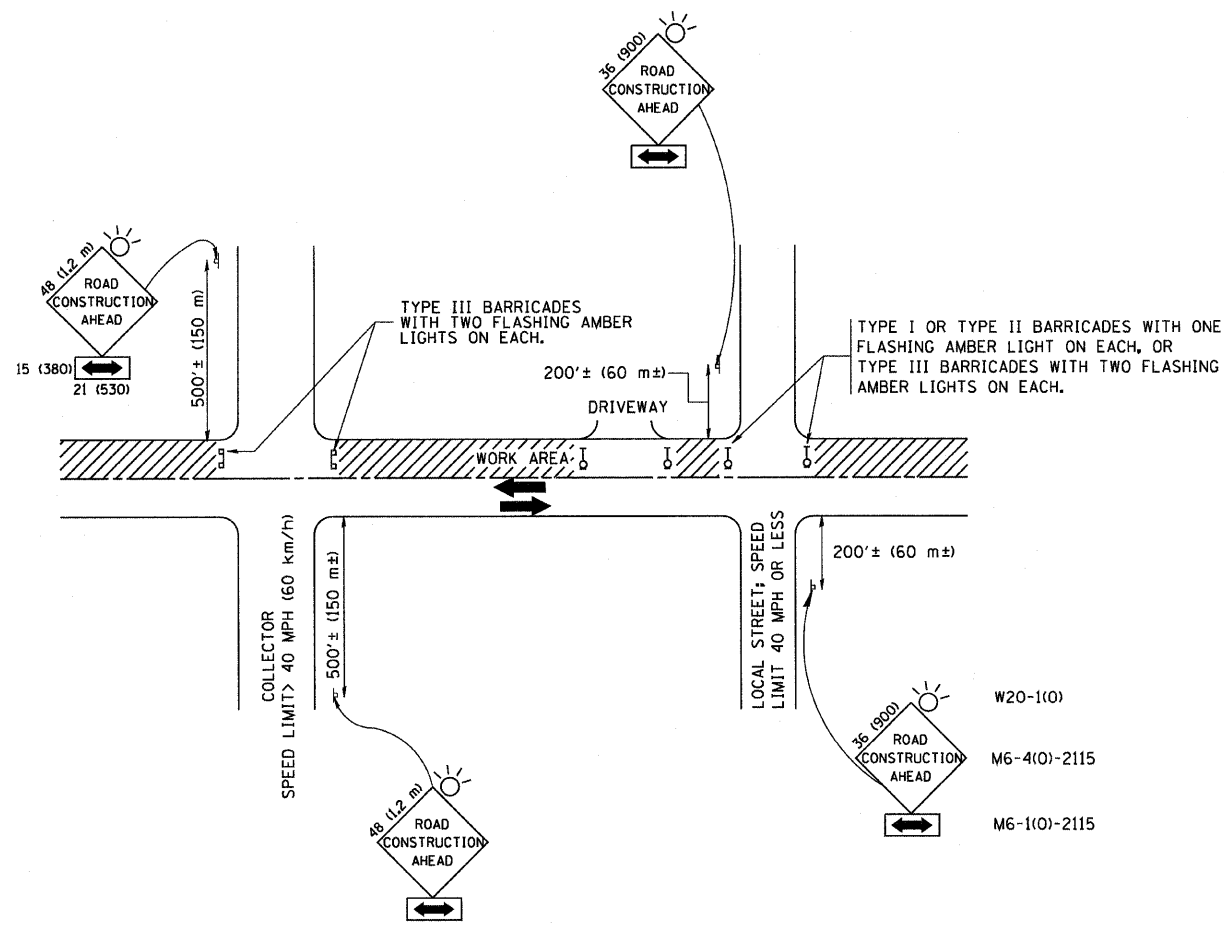
- ① EXISTING CONFLICTING PAVEMENT MARKING LINES SHALL BE REMOVED. PAVEMENT MARKING REMOVAL SHALL NOT BE REQUIRED FOR SINGLE LANE WEAVES UNDER 24 HOURS IN DURATION.
- ② CONTINUOUS REFLECTIVE TEMPORARY PAVEMENT MARKING TAPE SHALL BE PLACED THROUGHOUT THE TAPER AND FOR 300' (90 m) ALONG SIDE THE WORK AREA WHERE THE CLOSURE TIME IS GREATER THAN FOURTEEN DAYS. THE LEFT EDGE LINE SHALL BE YELLOW AND THE RIGHT EDGE LINE SHALL BE WHITE. FOR MULTI-LANE WEAVES LANE LINES SHALL BE 5 INCH, 10'-30' (3 m-9 m) SKIP DASH, WHITE.
- ③ PLASTIC DRUMS WITH STEADY BURN LIGHTS AT 50' (15 m) C-C SPACING IN TAPERS AND 100' (30 m) C-C SPACING IN TANGENTS.
- ④ ALL SIGNS SHALL BE POST MOUNTED IF THE CLOSURE TIME EXCEEDS FOUR DAYS.
- ⑤ IF A TYPE III BARRICADE WITH AN ATTACHED SIGN PANEL WHICH MEETS NCHRP 350 IS NOT AVAILABLE, THE SIGNS MAY BE MOUNTED ON NCHRP 350 TEMPORARY SIGN SUPPORTS. TYPE III BARRICADES MAY BE OMITTED FOR SINGLE-LANE WEAVES UNDER 24-HOURS IN DURATION. W1-6 SIGNS WILL STILL BE REQUIRED. IF THE WIDTH OF OFFSET IS LESS THAN 6' THEN THE TYPE III BARRICADE WITH ATTACHED ARROW SIGN PANEL CAN BE ELIMINATED IN THE TAPER AREAS.
- ⑥ WHEN THE LENGTH OF THE SHIFTED SEGMENT (DISTANCE BETWEEN WEAVE POINTS) IS LESS THAN 1500', DOUBLE REVERSE CURVE SIGNS (W24-1) SHOULD BE USED INSTEAD OF THE REVERSE CURVE (W1-4) SIGNS. ARROWS ON THE 4'X8' "ALL TRAFFIC" SIGNS SHALL BE THE SAME SHAPE.
- ⑦ THE NUMBER OF ARROWS ON THESE SIGNS SHALL MATCH THE NUMBER OF LANES OPEN TO TRAFFIC.

SYMBOLS

- DIRECTION OF TRAFFIC
- WORK AREA
- SIGN ON PORTABLE OR PERMANENT SUPPORT
- TYPE II BARRICADE OR DRUM WITH MONO-DIRECTIONAL STEADY BURNING LIGHT
- W24-1-48

ALL DIMENSIONS ARE IN INCHES (MILLIMETERS) UNLESS OTHERWISE SHOWN

FILE NAME = W:\diststd\22x34\td09.dgn	USER NAME = lsgsa	DESIGNED - DWS	REVISED - JAF 01-03	STATE OF ILLINOIS DEPARTMENT OF TRANSPORTATION	TRAFFIC CONTROL DETAILS FOR FREEWAY SINGLE & MULTI-LANE WEAVE			F.A.J. RTE. 55	SECTION 2011-041-GRR	COUNTY DUPAGE/WILL	TOTAL SHEETS 19	SHEET NO. 17
PLOT SCALE = 50.000' / IN.	CHECKED -	DATE - 02-87	REVISED - JAF 02-06		SCALE: NONE	SHEET NO. 1 OF 1 SHEETS	STA. TO STA.	TC-09 CONTRACT NO. 60P47				
PLOT DATE = 1/26/2010	DATE - 02-87	REVISED - SPB 12-09	REVISED - SPB 01-07		FED. ROAD DIST. NO. 1 [ILLINOIS] FED. AID PROJECT							



TRAFFIC CONTROL AND PROTECTION FOR SIDE ROADS, INTERSECTIONS, AND DRIVEWAYS

NOTES:

A. FOR NO LANE RESTRICTION ON THE SIDE ROAD OR DRIVEWAYS

1. SIDE ROAD WITH A SPEED LIMIT OF 40 MPH (60 km/h) OR LESS AS SHOWN ON THE DRAWING AND AS DIRECTED BY THE ENGINEER:
 - a) ONE ROAD CONSTRUCTION AHEAD SIGN 36 x 36 (900x900) WITH A FLASHER AND FLAG MOUNTED ON IT APPROXIMATELY 200' (60 m) IN ADVANCE OF THE MAIN ROUTE.
 - b) THE CLOSED PORTION OF THE MAIN ROUTE SHALL BE PROTECTED BY BLOCKING WITH TYPE I, TYPE II OR TYPE III BARRICADES, 1/3 OF THE CROSS SECTION OF THE CLOSED PORTION.
2. SIDE ROAD WITH A SPEED LIMIT GREATER THAN 40 MPH (60 km/h) AS SHOWN ON THE DRAWING AND AS DIRECTED BY THE ENGINEER:
 - a) ONE ROAD CONSTRUCTION AHEAD SIGN 48 x 48 (1.2 m x 1.2 m) WITH A FLASHER MOUNTED ON IT APPROXIMATELY 500' (150 m) IN ADVANCE OF THE MAIN ROUTE.
 - b) THE CLOSED PORTION OF THE MAIN ROUTE SHALL BE PROTECTED BY BLOCKING WITH TYPE III BARRICADES, 1/2 OF THE CROSS SECTION OF THE CLOSED PORTION.
3. WHEN THE SIDE ROAD LIES BETWEEN THE BEGINNING OF THE MAINLINE SIGNING AND THE WORK ZONE, A SINGLE HEADED ARROW (M6-1) SHALL BE USED IN LIEU OF THE DOUBLE HEADED ARROW (M6-4).

B. FOR A LANE CLOSURE ON A SIDE ROAD OR DRIVEWAY:

USE APPLICABLE PORTIONS OF THE TYPICAL APPLICATION OF TRAFFIC CONTROL DEVICES (STD. 701501, STD. 701606 OR THE APPROPRIATE STANDARD). THE SPACING OF SIGNS AND BARRICADES SHALL BE ADJUSTED FOR FIELD CONDITIONS AS DIRECTED BY THE ENGINEER. THE DIRECTIONAL ARROW SHALL BE COVERED OR REMOVED WHEN NO LONGER CONSISTENT WITH THE SIDE ROAD LANE CLOSURE.

C. ADVANCE WARNING SIGNS ARE TO BE OMITTED ON DRIVEWAY UNLESS OTHERWISE NOTED.

D. THE TRAFFIC CONTROL AND PROTECTION FOR SIDE ROADS, INTERSECTIONS, AND DRIVEWAYS SHALL BE INCIDENTAL TO THE COST OF SPECIFIED TRAFFIC CONTROL STANDARDS OR ITEMS.

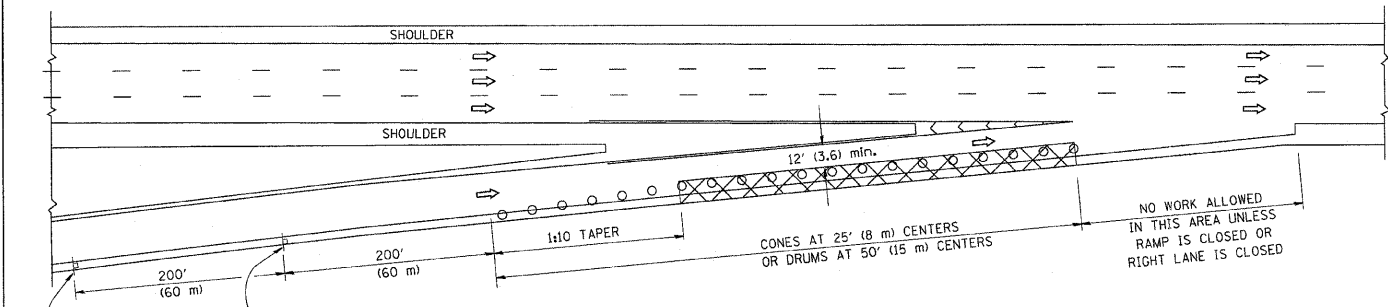
All dimensions are in millimeters (inches) unless otherwise shown.

FILE NAME =	USER NAME = gaglienobt	DESIGNED - LHA	REVISED - J. OBERLE 10-18-95
M:\dstatd\22x34\tcl0.dgn		DRAWN -	REVISED - A. HOUSEH 03-06-96
	PLOT SCALE = 50.000' / IN.	CHECKED -	REVISED - A. HOUSEH 10-15-96
	PLOT DATE = 1/4/2008	DATE - 06-89	REVISED - T. RAMMACHER 01-06-00

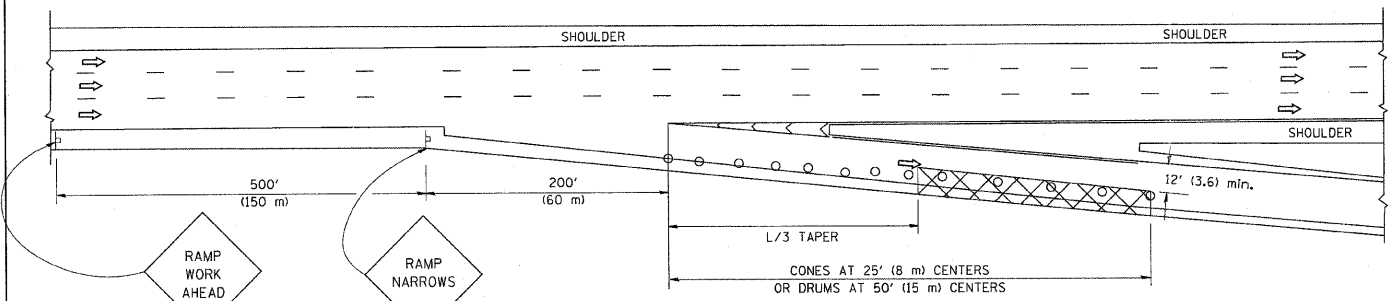
STATE OF ILLINOIS
DEPARTMENT OF TRANSPORTATION

TRAFFIC CONTROL AND PROTECTION FOR SIDE ROADS, INTERSECTIONS, AND DRIVEWAYS		F.A.I. RTE.	SECTION	COUNTY	TOTAL SHEETS	SHEET NO.
SCALE: NONE		55	2011-041-GRR	DuPAGE/WILL	19	18
SHEET NO. 1 OF 1 SHEETS		TC-10		CONTRACT NO. 60P47		
STA. TO STA.		FED. ROAD DIST. NO. 1 ILLINOIS FED. AID PROJECT				

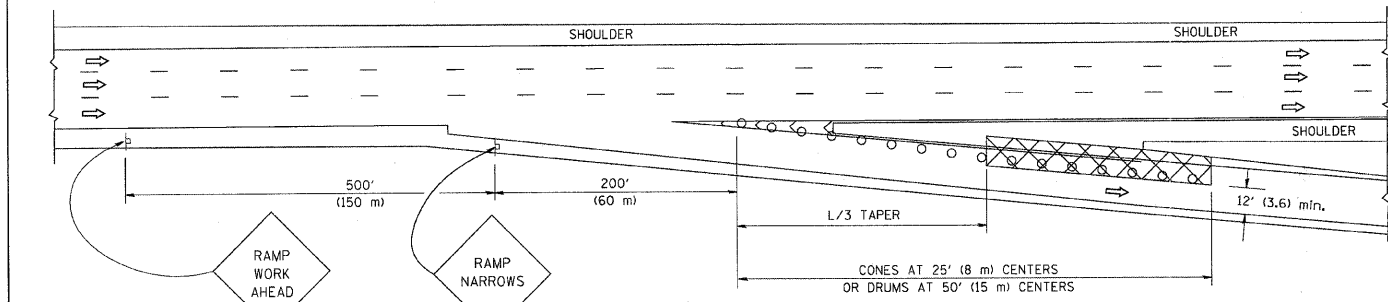
PARTIAL RAMP CLOSURE DETAILS



TYPICAL ENTRANCE RAMP



TYPICAL EXIT RAMP



TYPICAL EXIT RAMP

SYMBOLS

- ACTIVE WORK AREA
- SIGN ON PORTABLE OR PERMANENT SUPPORT
- FLAGGER WITH CONTROL SIGN
- TYPE II BARRICADE, DRUM OR VERTICAL BARRICADE WITH STEADY BURN MONO-DIRECTIONAL LIGHT
- CONE, DRUM OR BARRICADE

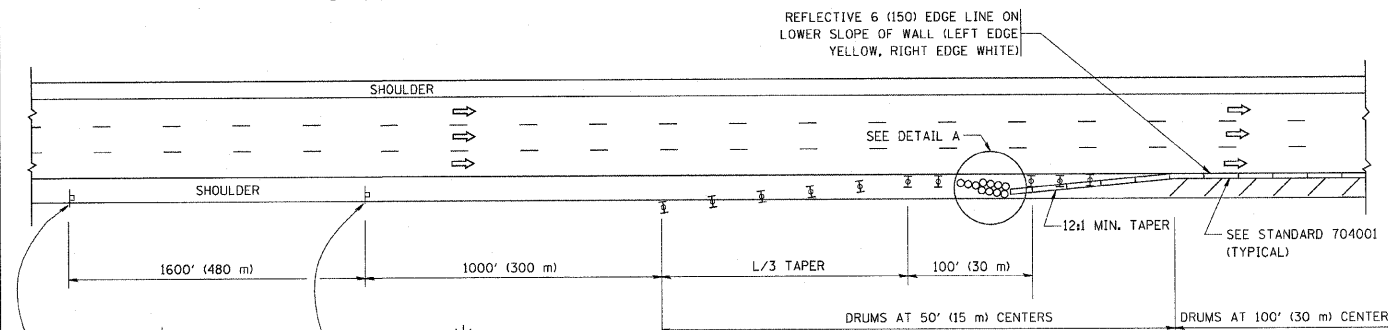
GENERAL NOTES

1. THE "L" DISTANCE EQUALS:

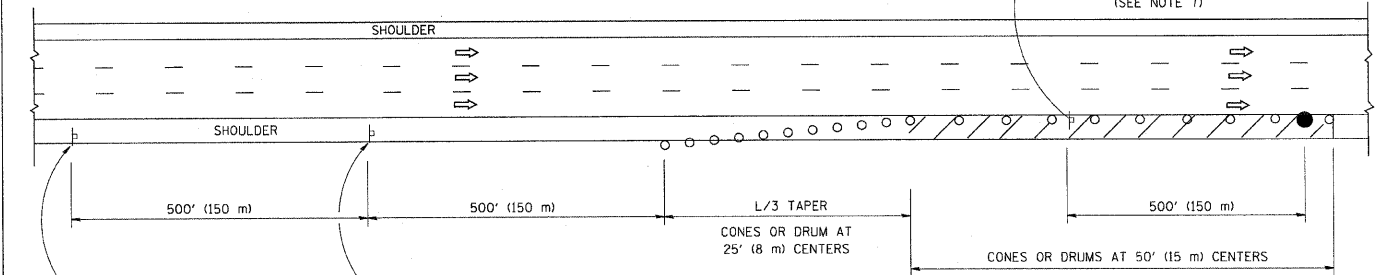
SPEED LIMIT	FORMULAS
45 mph (80 km/h) OR GREATER:	METRIC ENGLISH
	$L=0.65(W)(S)$ $L=(W)(S)$

W = WIDTH OF OFFSET IN FEET (METERS)
S = NORMAL POSTED SPEED MPH (KM/H)
2. PLASTIC DRUMS WITH HIGH PERFORMANCE REFLECTIVE SHEETING AND STEADY BURNING LIGHTS ARE REQUIRED FOR ALL NIGHTTIME CLOSURES.
3. ALL SIGNS SHALL BE POST MOUNTED IF THE CLOSURE TIME EXCEEDS FOUR DAYS.
4. FLASHING LIGHTS SHALL BE USED DURING THE HOURS OF DARKNESS AND SHALL BE INSTALLED ABOVE THE FIRST TWO SETS OF SIGNS.

SHOULDER CLOSURE DETAILS

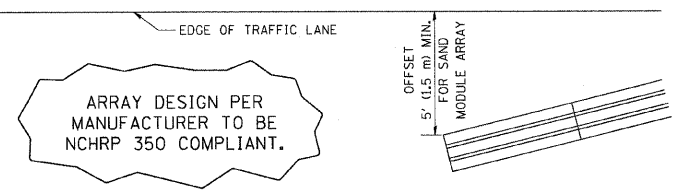


PERMANENT SHOULDER CLOSURE



DAYTIME SHOULDER CLOSURE

THIS DETAIL IS USED WHERE:
1. VEHICLES, EQUIPMENT, WORKERS OR THEIR ACTIVITIES ENCR OACH IN AN AREA CLOSER THAN 15' (4.5 m) TO THE EDGE OF PAVEMENT FOR A PERIOD IN EXCESS OF 15 MINUTES.



DETAIL "A"
IMPACT ATTENUATOR, TEMPORARY
(SEE NOTE 5)

5. THE IMPACT ATTENUATOR, TEMPORARY IS NOT REQUIRED WHEN THE TEMPORARY CONCRETE BARRIER WALL IS PROTECTED BY OR IS TIED INTO THE EXISTING GUARDRAIL. IF OFFSET IS LESS THAN 5 FEET USE NARROW USE TYPE DEVICE TO MEET NCHRP350.
6. AUTHORIZATION FROM THE DISTRICT'S BUREAU OF TRAFFIC IS REQUIRED FOR ALL FREEWAY CLOSURES.
7. THE FLAGGER AND FLAGGER SIGN ARE REQUIRED AT THE ABOVE WORK SITES WHEN:
 - a. FOUR OR MORE WORK VEHICLES ENTER THE TRAFFIC LANES IN A ONE HOUR PERIOD.
 - b. THE WORK AVTIVITY REQUIRES FREQUENT ENCROACHMENT INTO THE LANE OPEN TO TRAFFIC.
 THE FLAGGER SHALL BE STATIONED APPROXIMATELY 100' (30 m) TO 200' (60 m) IN ADVANCE OF THE WORKERS.

ALL DIMENSIONS ARE IN INCHES (MILLIMETERS) UNLESS OTHERWISE SHOWN.

FILE NAME = W:\diststd\22x34\to17.dgn	USER NAME = lsgsa	DESIGNED - DRAWN - D.W.S.	REVISED - 04-03 REVISED - J.A.F. 12-06 REVISED - S.P.B. 01-07 REVISED - S.P.B. 12-09	STATE OF ILLINOIS DEPARTMENT OF TRANSPORTATION	TRAFFIC CONTROL DETAILS FOR FREEWAY SHOULDER CLOSURES AND PARTIAL RAMP CLOSURES	F.A.J. RTE. 55	SECTION 2011-041-GRR	COUNTY DuPAGE/WILL	TOTAL SHEETS 19	SHEET NO. 19
SCALE: NONE SHEET NO. 1 OF 1 SHEETS STA. TO STA.						TC-17 CONTRACT NO. 60P47 FED. ROAD DIST. NO. 1 ILLINOIS FED. AID PROJECT				