

F.A.P. RTE.	SECTION	COUNTY	TOTAL SHEETS	SHEET NO.
330	465Y-RS-5	COOK	21	1
FED. ROAD DIST. NO. 1	ILLINOIS	CONTRACT NO. 60P50		

D-91-566-11

STATE OF ILLINOIS
DEPARTMENT OF TRANSPORTATION
DIVISION OF HIGHWAYS
PROPOSED
HIGHWAY PLANS

F.A.P. 330: US ROUTE 12/45 (MANNHEIM RD.)
SECTION: 465Y-RS-5
WAVELAND AVENUE TO BELMONT AVENUE
RESURFACING (3P)

FOR INDEX OF SHEETS, SEE SHEET NO. 2



LOCATION OF SECTION INDICATED THUS:


STATE OF ILLINOIS
DEPARTMENT OF TRANSPORTATION
DIVISION OF HIGHWAYS

SUBMITTED MAY 25, 20 11

Diane M. O'Keefe
DEPUTY DIRECTOR OF HIGHWAYS, REGION ENGINEER

July 1 20 11
Scott E. Stitt P.E.
acting ENGINEER OF DESIGN AND ENVIRONMENT

July 1 20 11
Christine M. Reed
DIRECTOR OF HIGHWAYS, CHIEF ENGINEER

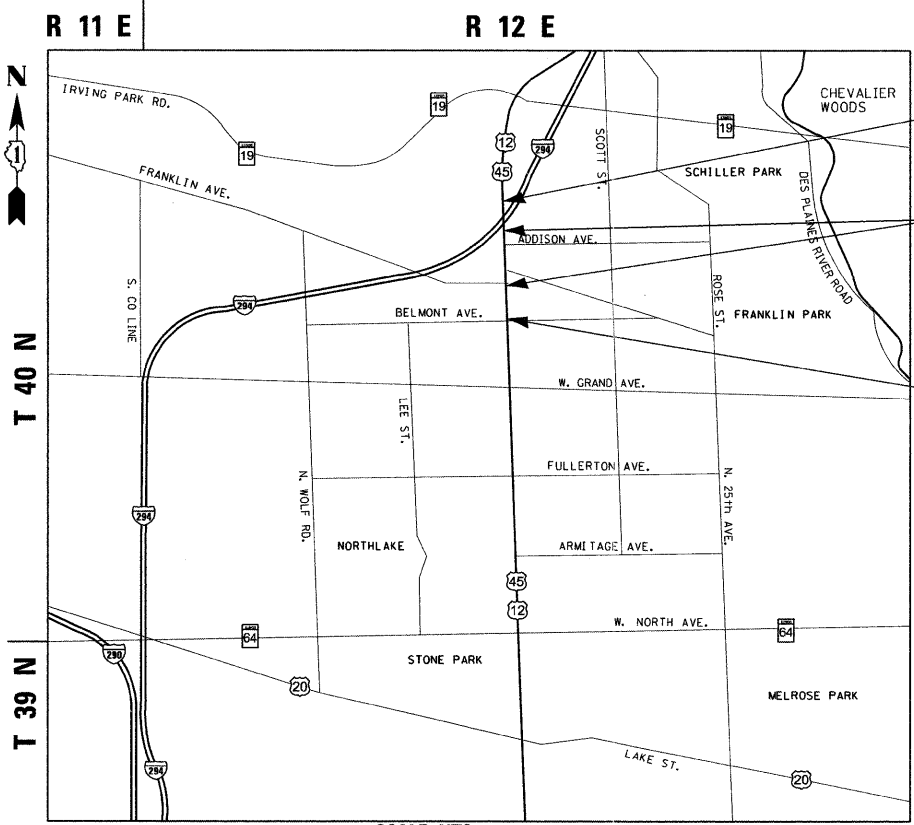


200 22ND Street, Suite 216, Lombard, IL 60148
630.705.0110 voice, 630.839.2566 fax
www.mps-il.com

MILLENNIA PROFESSIONAL SERVICES

PRINTED BY THE AUTHORITY
OF THE STATE OF ILLINOIS

COOK COUNTY
C-91-566-11



PROJECT ENDS
STA. 200 + 49

BRIDGE OMISSION
STA. 173 + 80 TO 193 + 70

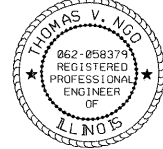
PROJECT BEGINS
STA. 164 + 27

SCALE: NTS
PROVISO TOWNSHIPS

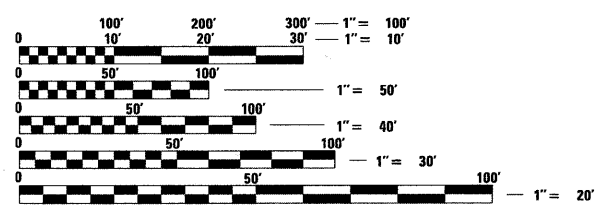
GROSS LENGTH OF PROJECT = 3622 FT = 0.69 MILES
NET LENGTH OF PROJECT = 1632 FT = 0.31 MILES

MILLENNIA PROFESSIONAL SERVICES
THOMAS V. NGO, P.E.
* 062-058379

Thomas V. Ngo
DATE: 05/25/11
SIGNATURE AND SEAL APPLIES TO DRWG.



TRAFFIC DATA
US ROUTE 12/45
2007 ADT = 47,700
SPEED LIMIT = 30 MPH TO 40 MPH



FULL SIZE PLANS HAVE BEEN PREPARED USING STANDARD ENGINEERING SCALES. REDUCED SIZED PLANS WILL NOT CONFORM TO STANDARD SCALES. IN MAKING MEASUREMENTS ON REDUCED PLANS, THE ABOVE SCALES MAY BE USED.

J.U.L.I.E.
JOINT UTILITY LOCATION INFORMATION FOR EXCAVATION
1-800-892-0123
OR 811

DISTRICT ONE - PLAN PREP ENGINEER: KEN ENG (847) 705-4247

CONTRACT NO. 60P50