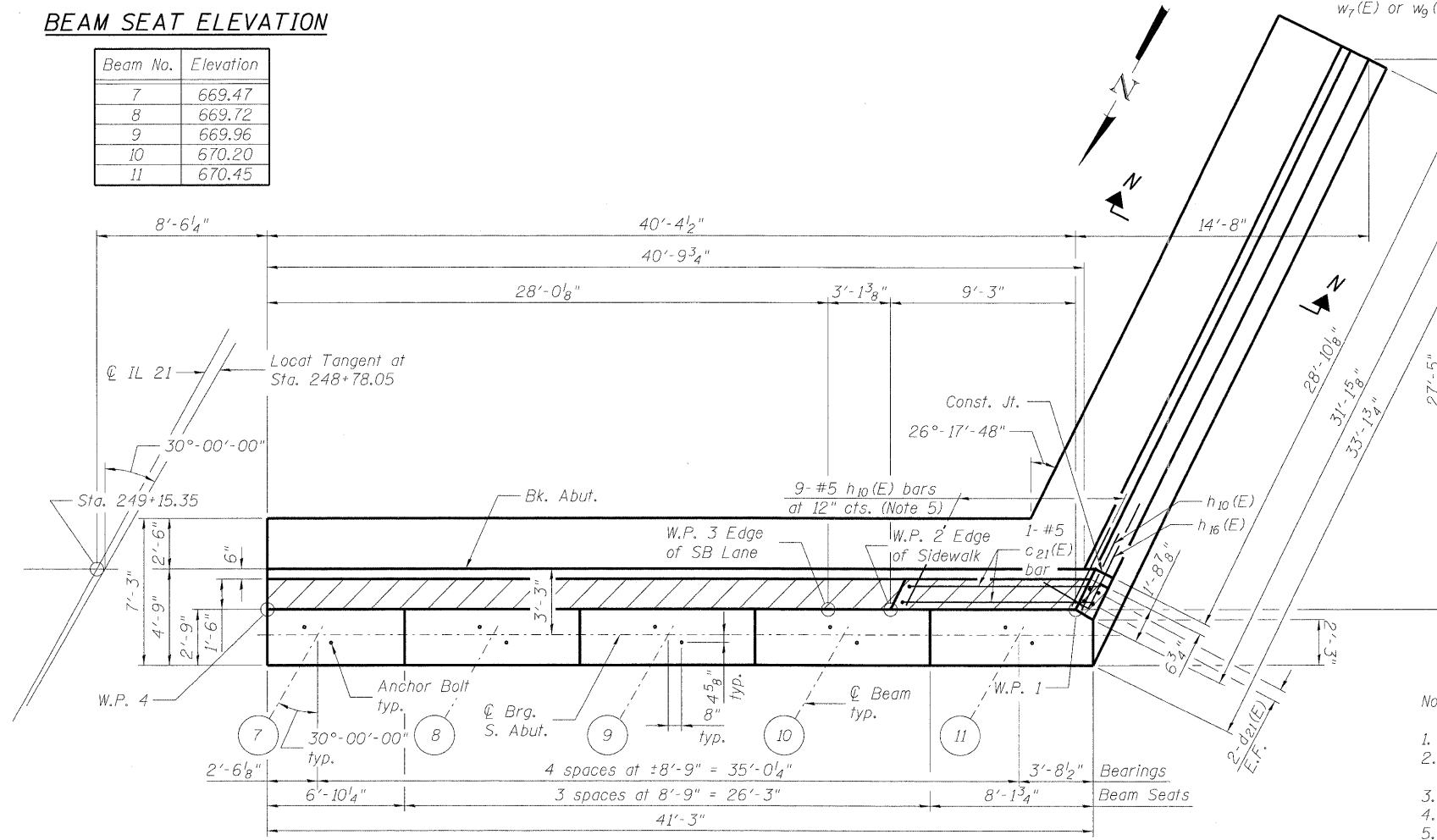


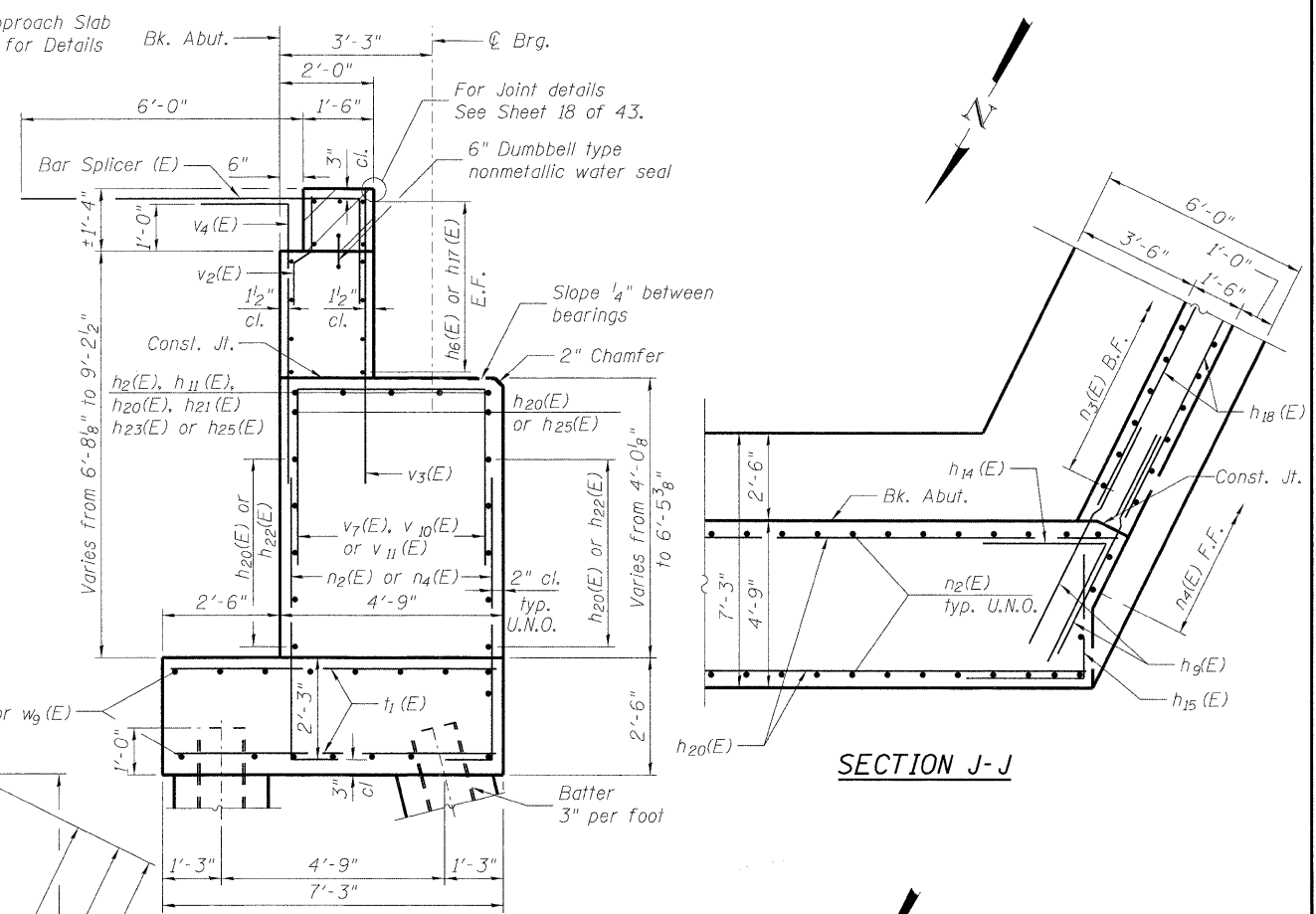
**SOUTH ABUTMENT STAGE I ELEVATION**

**BEAM SEAT ELEVATION**

Beam No.	Elevation
7	669.47
8	669.72
9	669.96
10	670.20
11	670.45



**SOUTH ABUTMENT STAGE I PLAN VIEW**



- Notes:
1. See Section N-N on sheet 37 of 43.
  2. Hatched area to be poured after superstructure false work has been removed. Quantity of concrete included with Concrete Superstructure.
  3. Space reinforcement in cap to miss anchor bolts.
  4. Pour steps monolithically with cap.
  5. Place bar splicer (E), v4(E) and h10(E) bars parallel to beams. Alternate bar splicer with v4(E) bars.
  - \* 6. Field cut h21(E) bars to fit.
  7. Min. lap splice for #5 bar is 2'-11" and #6 bar is 3'-6" unless noted otherwise.

FOR INFORMATION ONLY **MACTEC**

FILE NAME =	USER NAME =	DESIGNED - JY	REVISED -
#FILE#		CHECKED - RMK	REVISED -
		DRAWN - JY	REVISED -
		CHECKED - RMK	REVISED -

**STATE OF ILLINOIS  
DEPARTMENT OF TRANSPORTATION**

**STAGE I SOUTH ABUTMENT PLAN, ELEVATION AND SECTIONS  
STRUCTURE NO. 049-0199**

F.A.P. RTE.	SECTION	COUNTY	TOTAL SHEETS	SHEET NO.
330	128R-2-F	LAKE	28	25
CONTRACT NO. 60P54				
ILLINOIS FED. AID PROJECT				

SHEET NO. 35 OF 43 SHEETS