

F.A.U. RTE.	SECTION	COUNTY	TOTAL SHEETS	SHEET NO.
4061	09-00371-00-RS	McHENRY	12	1
FED. ROAD DIST. NO.	ILLINOIS	CONTRACT NO. 63386		

STATE OF ILLINOIS
DEPARTMENT OF TRANSPORTATION
DIVISION OF HIGHWAYS

FOR INDEX OF SHEETS, SEE SHEET NO. 2

PROJECT LOCATED IN VILLAGE OF RICHMOND.

**PLANS FOR PROPOSED
FEDERAL AID PROJECT**

FAU ROUTE 4061 (BURLINGTON ROAD)

**U.S. ROUTE 12 (FAU 3696) TO WI STATE LINE
RESURFACING**

SECTION NO.: 09-00371-00-RS

PROJECT NO.: M-9003(833)

JOB NO.: C-91-345-10

McHENRY COUNTY

TRAFFIC DATA

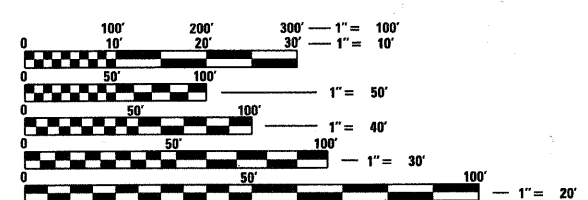
ADT (2007) = 4,390
SPEED LIMIT = 55 MPH

FUNCTIONAL CLASSIFICATION = COLLECTOR (URBAN)

RESURFACING ENDS
STA. 33 + 12.66

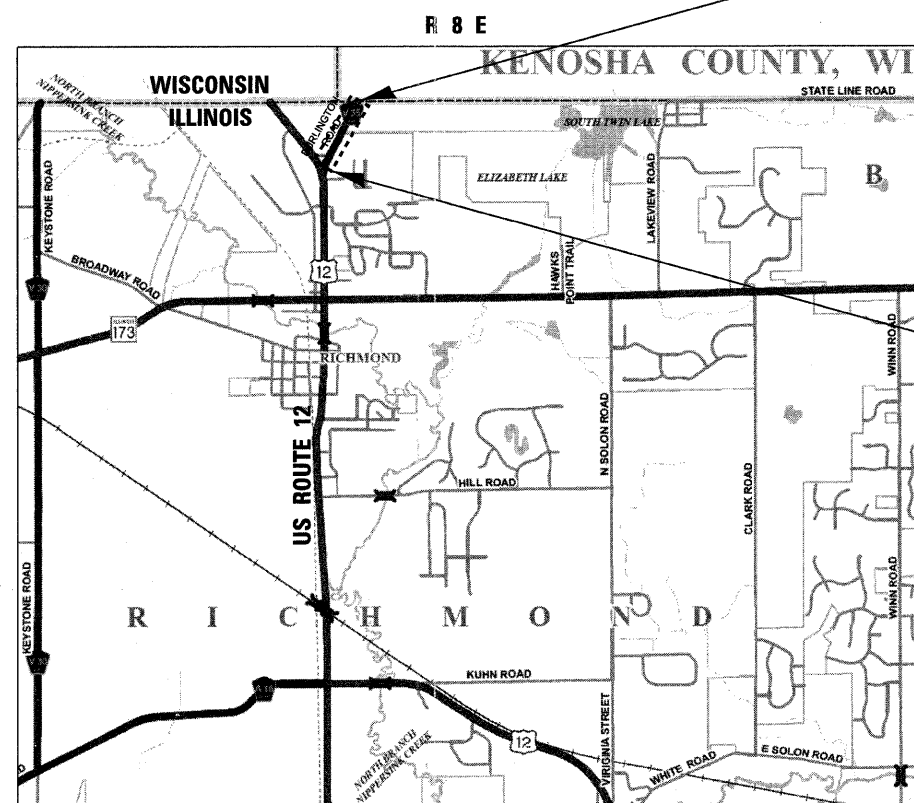
RESURFACING BEGINS
STA. 11 + 16.23

PROGRAM AND OFFICE ENGINEER: CHARLES F. RIDDLE, P.E. (847) 705-4406 / SCHAUMBURG, IL



FULL SIZE PLANS HAVE BEEN PREPARED USING STANDARD ENGINEERING SCALES. REDUCED SIZED PLANS WILL NOT CONFORM TO STANDARD SCALES. IN MAKING MEASUREMENTS ON REDUCED PLANS, THE ABOVE SCALES MAY BE USED.

J.U.L.I.E.
JOINT UTILITY LOCATION INFORMATION FOR EXCAVATION
1-800-892-0123
OR 811



LOCATION MAP

(NOT TO SCALE)

RICHMOND TOWNSHIP

GROSS (NET) LENGTH OF IMPROVEMENT = 2,196.43 LF = 0.42 MILES



**STATE OF ILLINOIS
DEPARTMENT OF TRANSPORTATION
DIVISION OF HIGHWAYS**

APPROVED MAY 25 20 11

Joseph R. Kordecki
McHENRY COUNTY, COUNTY ENGINEER

PASSED MAY 25 20 11

Charles F. Riddle
DISTRICT 1 ENGINEER OF LOCAL ROADS & STREETS

RELEASING FOR BID
BASED ON LIMITED
REVIEW MAY 31 20 11

Diana M. O'Keefe
DEPUTY DIRECTOR OF HIGHWAYS, REGION 1 ENGINEER

**PRINTED BY THE AUTHORITY
OF THE STATE OF ILLINOIS**



CONTRACT NO. 63386

INDEX OF SHEETS

<u>SHEET NO.</u>	<u>TITLE</u>
1	COVER SHEET
2	INDEX OF SHEETS, STANDARDS, AND GENERAL NOTES
3	SUMMARY OF QUANTITIES AND DRIVEWAY DETAIL
4	TYPICAL SECTIONS AND HMA MIXTURE REQUIREMENTS
5-6	PROPOSED PLAN
7	BD-32 BUTT JOINTS AND HMA TAPER DETAILS
8	TC-10 TRAFFIC CONTROL AND PROTECTION FOR SIDE ROADS, INTERSECTIONS, AND DRIVEWAYS
9	TC-13 DISTRICT ONE TYPICAL PAVEMENT MARKINGS
10	TC-18 SIGNING FOR FLAGGING OPERATIONS AT WORK ZONE OPENING
11	TC-22 ARTERIAL ROAD INFORMATION SIGN
12	BD-22 PAVEMENT PATCHING FOR HMA SURFACED PAVEMENT

LISTS OF STANDARDS

000001-06	ABBREVIATIONS, SYMBOLS AND PATTERNS
442201-03	CLASS C AND D PATCHES
482011-03	HMA SHLD. STRIPS/SHLDS. WITH RESURFACING OR WIDENING AND RESURFACING PROJECTS
701011-02	OFF-ROAD MOVING OPERATIONS, 2L, 2W DAY ONLY
701201-04	LANE CLOSURE, 2L, 2W, DAY ONLY, FOR SPEEDS >=45 MPH
701306-03	LANE CLOSURE, 2L, 2W, SLOW MOVING OPERATIONS DAY ONLY, FOR SPEEDS >= 45 MPH
701311-03	LANE CLOSURE, 2L, 2W, MOVING OPERATIONS-DAY ONLY
701901-01	TRAFFIC CONTROL DEVICES
BLR 24-2	MAILBOX TURNOUT FOR LOCAL ROADS

GENERAL NOTES

- ALL CONSTRUCTION SHALL BE DONE IN ACCORDANCE WITH THE DETAILS IN THE PLANS, THE SPECIAL PROVISIONS INCLUDED IN THE CONTRACT DOCUMENTS, AND THE LATEST EDITION OF THE FOLLOWING STATE OF ILLINOIS SPECIFICATIONS: "THE STANDARD SPECIFICATIONS FOR ROAD AND BRIDGE CONSTRUCTION" (REFERRED TO AS THE "STANDARD SPECIFICATIONS"), THE "SUPPLEMENTAL SPECIFICATIONS AND RECURRING SPECIAL PROVISIONS", THE "MANUAL ON UNIFORM TRAFFIC CONTROL DEVICES FOR STREETS AND HIGHWAYS" AND THE "MANUAL OF TEST PROCEDURES FOR MATERIALS".
- BARRICADES:** THE CONTRACTOR SHALL PROVIDE AND INSTALL TWO (2) WEIGHTED SAND BAGS ON EACH TYPE I OR TYPE II BARRICADE USED FOR - ONE (1) WEIGHTED SAND BAG ACROSS EACH BOTTOM RAIL.
- ANY SIGNS THAT ARE IN CONFLICT WITH THE PROPOSED CONSTRUCTION SHALL BE REMOVED AND REPLACED IN ACCORDANCE WITH COUNTY STANDARDS AND INCLUDED IN THE COST OF THE CONTRACT.
- THE CONTRACTOR SHALL BE RESPONSIBLE FOR THE PROTECTION OF ALL UNDERGROUND OR SURFACE UTILITIES EVEN THOUGH THEY MAY NOT BE SHOWN ON THE PLANS. ANY UTILITY THAT IS DAMAGED DURING CONSTRUCTION SHALL BE REPAIRED OR REPLACED AT THE CONTRACTOR'S EXPENSE TO THE SATISFACTION OF THE ENGINEER OR UTILITY COMPANY.
- THE CONTRACTOR SHALL CALL "J.U.L.I.E." AT 800-892-0123 OR 811 AND VILLAGE OF RICHMOND AT 815-678-4040 FOR FIELD LOCATIONS OF BURIED UTILITY FACILITIES PRIOR TO BEGINNING CONSTRUCTION. (48-HOUR NOTIFICATION REQUIRED)
- THE CONTRACTOR SHALL COORDINATE CONSTRUCTION ACTIVITIES WITH UTILITY COMPANIES AND THE ENGINEER.
- THE CONTRACTOR SHALL NOTIFY IDOT BUREAU OF MATERIALS (PHONE (847)-705-4337) AT LEAST 24 HOURS PRIOR TO THE PLACEMENT OF HMA OR CONCRETE.
- SAW CUTTING OF PAVEMENTS, SHOULDERS, ETC. SHALL BE TO FULL DEPTH EXCEPT SIDEROADS AND DRIVEWAYS (1/2" SAW CUT) AND SHALL RESULT IN A CLEAN, STRAIGHT EDGE ON THE PORTION REMAINING. ALL SAWCUTTING SHALL BE CONSIDERED INCLUDED IN THE COST OF THE ITEM BEING REMOVED.
- ALL MAILBOXES IMPACTED AS PART OF THE PROJECT, PER SECTION 107.20 OF THE IDOT STANDARD SPECIFICATIONS, SHALL BE RELOCATED AND WILL NOT BE PAID FOR SEPARATELY, BUT SHALL BE CONSIDERED AS INCLUDED IN THE COST OF THE CONTRACT.
- THE CONTRACTOR SHALL MAINTAIN ACCESS TO COMMERCIAL AND PRIVATE DRIVEWAYS AT ALL TIMES.

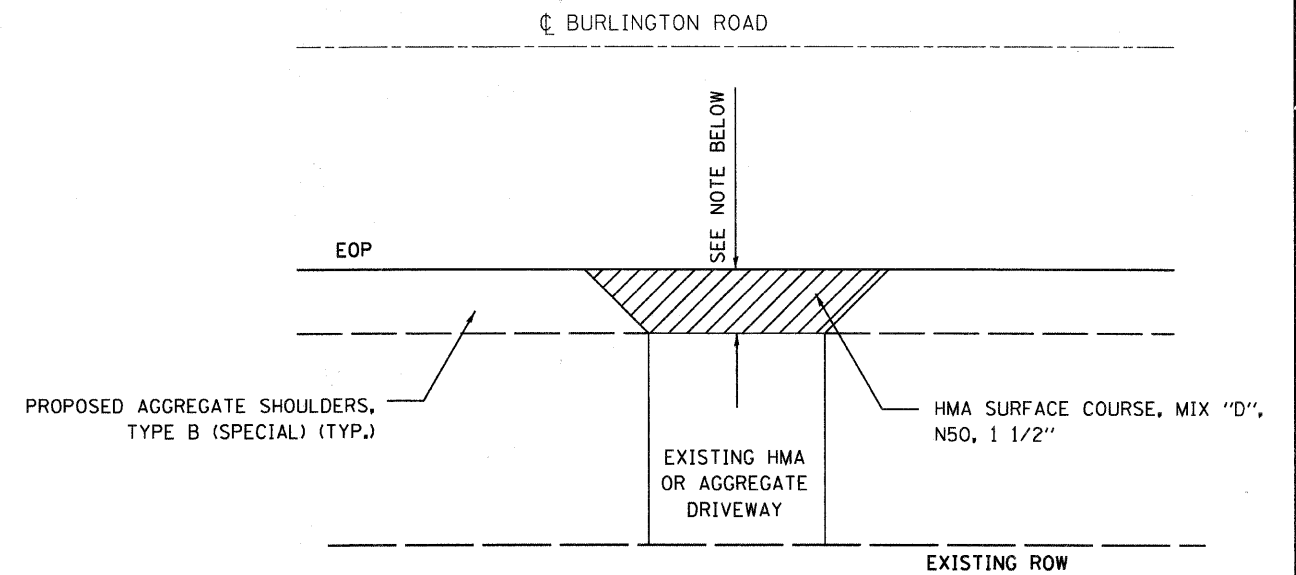
- THE CONTRACTOR SHALL UTILIZE A MECHANICAL SWEEPER TO CLEAN STREETS AFFECTED BY CONTRACTOR'S OPERATIONS, INCLUDING HAUL ROUTE, AT ALL TIMES. THIS WORK SHALL BE INCLUDED IN THE COST OF CONSTRUCTION.
- THE CONTRACTOR SHALL BE RESPONSIBLE FOR DISPOSING OF ALL SURPLUS MATERIALS RELATED TO THE JOB AFTER COMPLETING THE PAVING PROJECT.
- THE THERMOPLASTIC PAVEMENT MARKINGS MAY BE ADJUSTED FROM THE PLANS BY THE ENGINEER. THERMOPLASTIC PAVEMENT MARKINGS SHALL BE INSTALLED BY HAND-OPERATED METHOD ONLY.
- CONTRACTOR SHALL INSTALL NOTCHED WEDGE LONGITUDINAL JOINTS (12 INCHES MINIMUM) IN ACCORDANCE TO SUPPLEMENTAL SPECIFICATIONS SECTION 406. A MINIMUM OF 600 POUNDS COMPACTION IS REQUIRED.
- CONTRACTOR SHALL KEEP ONE LANE OF TRAFFIC OPEN AT ALL TIMES.

FILE NAME =	USER NAME = *USER*	DESIGNED -	REVISED - 5-6-2011	McHENRY COUNTY DIVISION OF TRANSPORTATION BURLINGTON ROAD IMPROVEMENT	INDEX OF SHEETS, STATE STANDARDS, AND GENERAL NOTES	F.A.U. RTE.	SECTION	COUNTY	TOTAL SHEETS	SHEET NO.	
#FILE#		DRAWN -	REVISED - 5-24-2011(PER IDOT)			4061	09-00371-00-RS	McHENRY	12	2	
	PLOT SCALE = *SCALE*	CHECKED -	REVISED -			CONTRACT NO. 63386					
	PLOT DATE = *DATE*	DATE - 12-4-2009	REVISED -			SCALE:	SHEET NO.	OF	SHEETS	STA.	TO STA.

SUMMARY OF QUANTITIES

CODE NO.	ITEM	UNIT	TOTAL QUANTITY	CONSTR. CODE
				ROADWAY 0005
40600100	BITUMINOUS MATERIALS (PRIME COAT)	GALLON	1120	1120
40600300	AGGREGATE (PRIME COAT)	TON	14	14
40600625	LEVELING BINDER (MACHINE METHOD), N50	TON	100	100
40600982	HOT-MIX ASPHALT SURFACE REMOVAL - BUTT JOINT	SQ YD	67	67
40603080	HOT-MIX ASPHALT BINDER COURSE, IL-19.0, N50	TON	882	882
40603335	HOT-MIX ASPHALT SURFACE COURSE, MIX "D", N50	TON	588	588
44201723	CLASS D PATCHES, TYPE IV, 6 INCH	SQ YD	140	140
67100100	MOBILIZATION	L SUM	1	1
70100450	TRAFFIC CONTROL AND PROTECTION, STANDARD 701201	L SUM	1	1
70100460	TRAFFIC CONTROL AND PROTECTION, STANDARD 701306	L SUM	1	1
* 78000200	THERMOPLASTIC PAVEMENT MARKING - LINE 4"	FOOT	8557	8557
Z0030850	TEMPORARY INFORMATION SIGNING	SQ FT	78	78
X4400196	HOT-MIX ASPHALT SURFACE REMOVAL, SPECIAL	SQ YD	7003	7003
X4811300	AGGREGATE SHOULDERS, TYPE B (SPECIAL)	TON	200	200
X7030200	SHORT-TERM PAVEMENT MARKING (SPECIAL)	FOOT	1597	1597

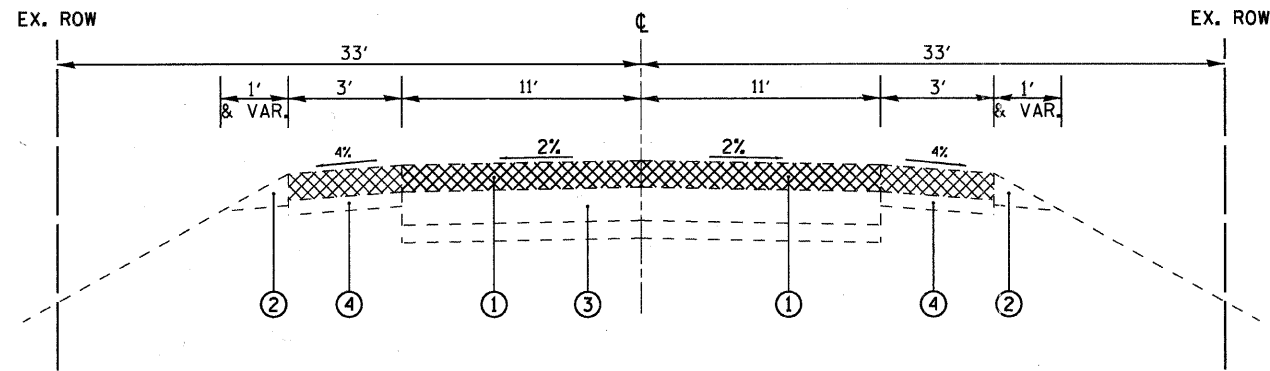
* SPECIALTY ITEMS



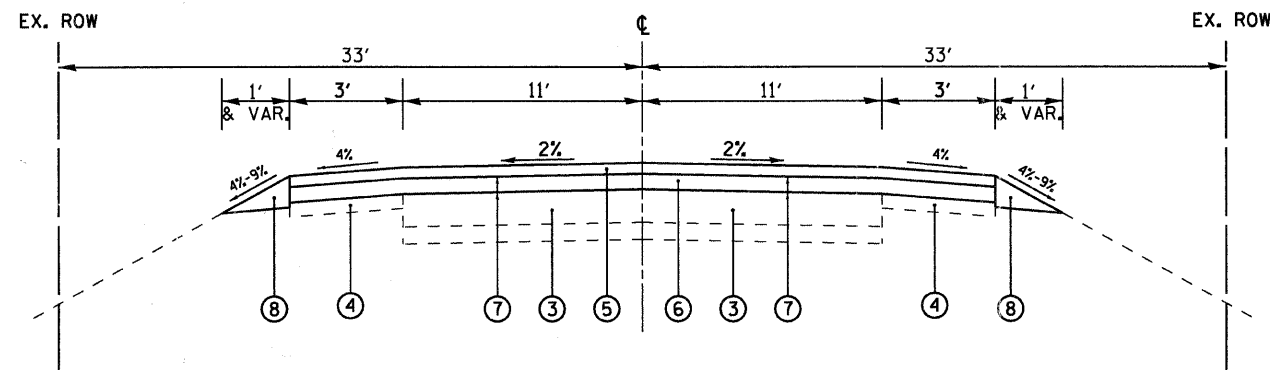
DRIVEWAY DETAIL

NOTE: 3' MAX. WHEN MATCHING EXISTING DRIVEWAY OR WHATEVER DIMENSION IS NECESSARY TO CREATE AND MAINTAIN A SATISFACTORY RIDING CONDITION. VARIABLE DIMENSIONS ARE SUBJECT TO ENGINEER APPROVAL.

FILE NAME =	USER NAME = #USER#	DESIGNED -	REVISED - 3-8-2010	McHENRY COUNTY DIVISION OF TRANSPORTATION BURLINGTON ROAD IMPROVEMENT	SUMMARY OF QUANTITIES AND DRIVEWAY DETAIL				F.A.U. RTE.	SECTION	COUNTY	TOTAL SHEETS	SHEET NO.
#FILEL#		DRAWN -	REVISED - 5-6-2011		4061	09-00371-00-RS	McHENRY	12	3				
	PLOT SCALE = #SCALE#	CHECKED -	REVISED - 5/24/2011 (PER IDOT)		SCALE: SHEET NO. OF SHEETS STA. TO STA.				CONTRACT NO. 63386				
	PLOT DATE = #DATE#	DATE - 12-4-2009	REVISED -		FED. ROAD DIST. NO. ILLINOIS FED. AID PROJECT								



**EXISTING TYPICAL SECTION
BURLINGTON ROAD**



**PROPOSED TYPICAL SECTION
BURLINGTON ROAD**

LEGEND

- ① HOT-MIX ASPHALT SURFACE REMOVAL, SPECIAL, 3 3/4"
- ② EXISTING AGGREGATE SHOULDERS
- ③ EXISTING HOT-MIX ASPHALT BASE COURSE
- ④ EXISTING HOT-MIX ASPHALT SHOULDERS
- ⑤ PROPOSED HOT-MIX ASPHALT SURFACE COURSE, MIX D, N50, 1 1/2"
- ⑥ PROPOSED HOT-MIX ASPHALT BINDER COURSE, IL-19.0, N50, 2 1/4"
- ⑦ PROPOSED BITUMINOUS MATERIALS (PRIME COAT) AND AGGREGATE (PRIME COAT)
- ⑧ PROPOSED AGGREGATE SHOULDERS, TYPE B, (SPECIAL)
- ⑨ PROPOSED LEVELING BINDER (MACHINE METHOD), N50 (AS NECESSARY FOR SLOPE CORRECTION)



PROPOSED HOT-MIX ASPHALT SURFACE REMOVAL, SPECIAL, 3 3/4"

NOTE:
CONTRACTOR SHALL MILL BEFORE PATCHING.

HOT-MIX ASPHALT MIXTURE REQUIREMENTS

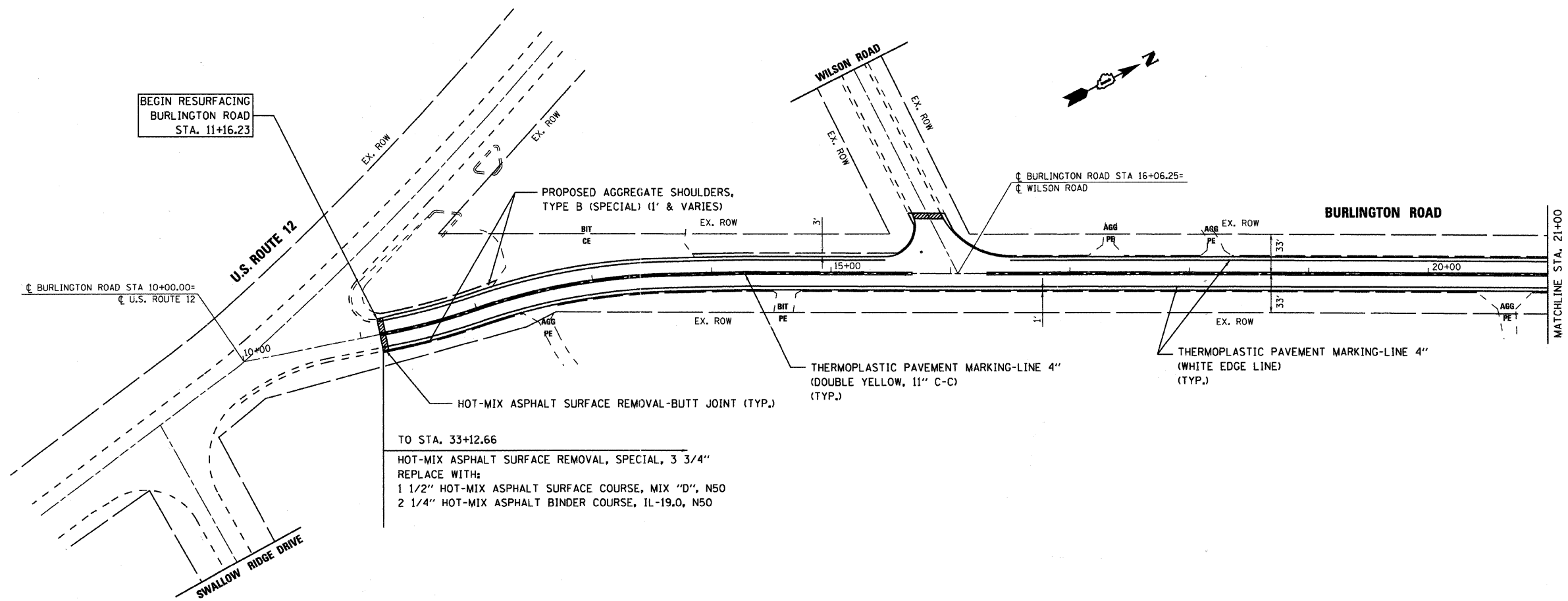
MIXTURE TYPE	AIR VOIDS @ Ndes
PAVEMENT RESURFACING:	
HOT-MIX ASPHALT SURFACE COURSE, MIX "D", N50 (IL 9.5 mm), 1 1/2"	4% @ 50 GYR.
HOT-MIX ASPHALT BINDER COURSE, IL-19.0, N50, 2 1/4"	4% @ 50 GYR.
SLOPE CORRECTION:	
LEVELING BINDER (MACHINE METHOD), N50 (IL 9.5 mm)	4% @ 50 GYR.
PATCHING:	
CLASS D PATCHES (HMA BINDER IL-19mm), 6" (IN 2" LIFTS)	4% @ 70 GYR.

THE UNIT WEIGHT USED TO CALCULATE ALL HMA SURFACE MIXTURE QUANTITIES IS 112 LBS/50 YD/IN.

THE "AC TYPE" FOR POLYMERIZED HMA MIXES SHALL BE "SBS/SBR PG 70-22" AND FOR NON-POLYMERIZED HMA THE "AC TYPE" SHALL BE "PG 64-22" UNLESS MODIFIED BY DISTRICT ONE SPECIAL PROVISIONS.

FOR "PERCENT OF RAP" SEE DISTRICT ONE SPECIAL PROVISIONS.

FILE NAME =	USER NAME = *USER*	DESIGNED -	REVISED - 5-6-2011	MCHENRY COUNTY DIVISION OF TRANSPORTATION BURLINGTON ROAD IMPROVEMENT	TYPICAL SECTIONS			F.A.U. RTE.	SECTION	COUNTY	TOTAL SHEETS	SHEET NO.
#FILEL*		DRAWN -	REVISED - 5/24/2011(PER IDOT)					4061	09-00371-00-RS	MCHENRY	12	4
PLOT SCALE = *SCALE*		CHECKED -	REVISED -		SCALE: NTS			CONTRACT NO. 63386				
PLOT DATE = *DATE*		DATE - 12-4-2009	REVISED -		SHEET NO. OF SHEETS STA. TO STA.			FED. ROAD DIST. NO. [ILLINOIS] FED. AID PROJECT				

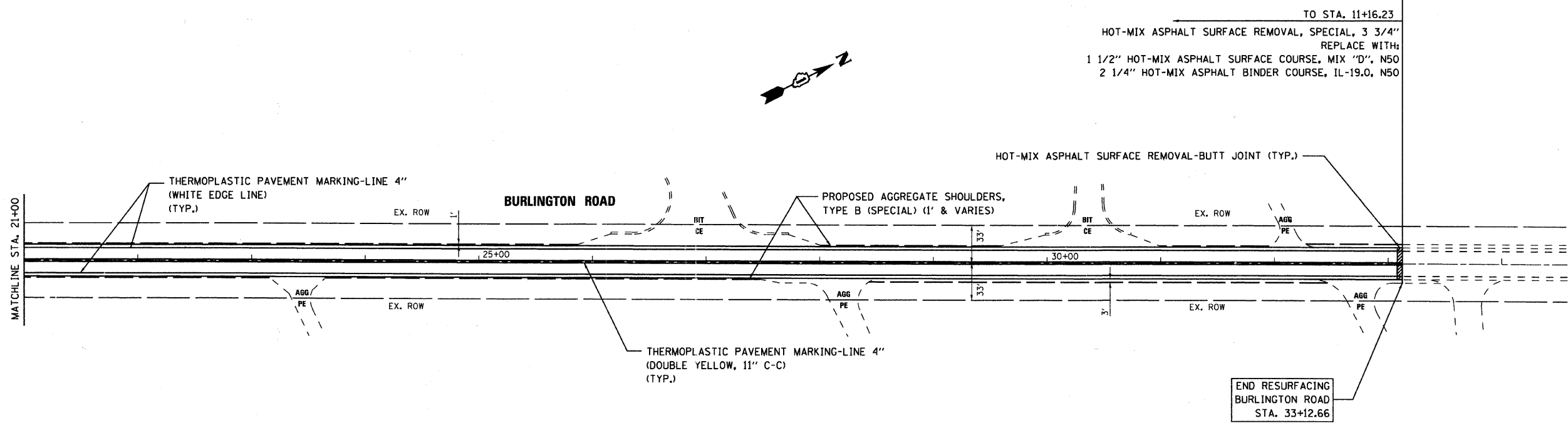


TO STA. 33+12.66
 HOT-MIX ASPHALT SURFACE REMOVAL, SPECIAL, 3 3/4"
 REPLACE WITH:
 1 1/2" HOT-MIX ASPHALT SURFACE COURSE, MIX "D", N50
 2 1/4" HOT-MIX ASPHALT BINDER COURSE, IL-19.0, N50

NOTES:

- 1) FOR PAVEMENT MARKING DETAILS, FOLLOW DISTRICT 1 STANDARD TC-13 "DISTRICT ONE TYPICAL PAVEMENT MARKINGS", WHERE APPLICABLE.

FILE NAME =	USER NAME = #USER*	DESIGNED -	REVISED - 3-8-2010	McHENRY COUNTY DIVISION OF TRANSPORTATION BURLINGTON ROAD IMPROVEMENT	PROPOSED PLAN			F.A.J. RTE.	SECTION	COUNTY	TOTAL SHEETS	SHEET NO.
#FILEL*		DRAWN -	REVISED - 5-6-2011					4061	09-00371-00-RS	McHENRY	12	5
		CHECKED -	REVISED -		SCALE: 1" = 50' SHEET NO. 1 OF 2 SHEETS STA. 10+00.00 TO STA. 21+00.00			CONTRACT NO. 63386				
		DATE - 12-4-2009	REVISED -		FED. ROAD DIST. NO. [ILLINOIS] FED. AID PROJECT							

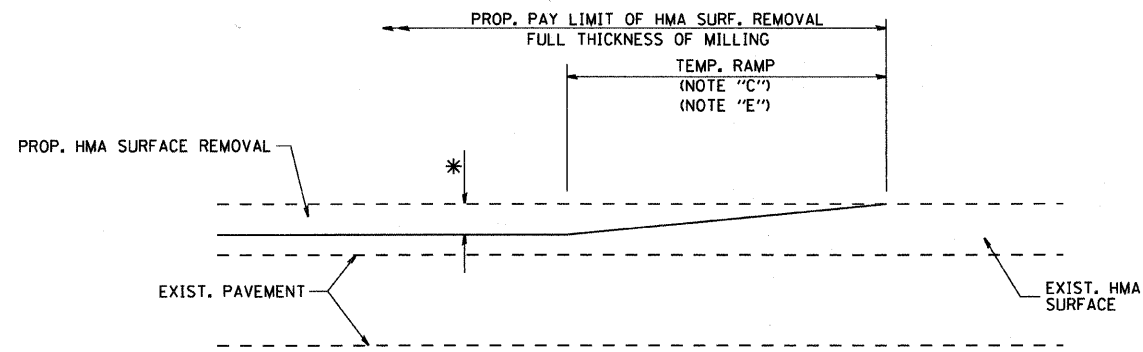


TO STA. 11+16.23
 HOT-MIX ASPHALT SURFACE REMOVAL, SPECIAL, 3 3/4"
 REPLACE WITH:
 1 1/2" HOT-MIX ASPHALT SURFACE COURSE, MIX "D", N50
 2 1/4" HOT-MIX ASPHALT BINDER COURSE, IL-19.0, N50

NOTES:

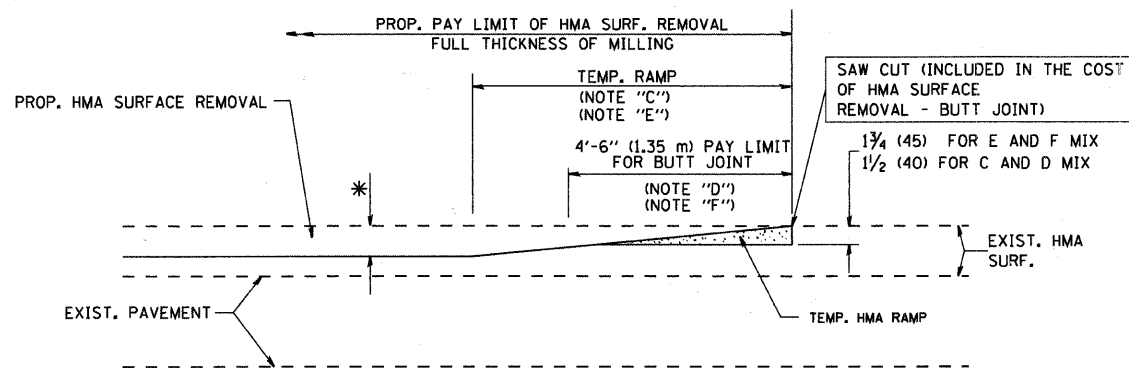
- 1) FOR PAVEMENT MARKING DETAILS, FOLLOW DISTRICT 1 STANDARD TC-13 "DISTRICT ONE TYPICAL PAVEMENT MARKINGS", WHERE APPLICABLE.

FILE NAME =	USER NAME = #USER#	DESIGNED -	REVISED - 3-8-2010	McHENRY COUNTY DIVISION OF TRANSPORTATION BURLINGTON ROAD IMPROVEMENT	PROPOSED PLAN	F.A.J. RTE.	SECTION	COUNTY	TOTAL SHEETS	SHEET NO.	
#FILE#		DRAWN -	REVISED -			4061	09-00371-00-RS	McHENRY	12	6	
		CHECKED -	REVISED -			SCALE: 1" = 50' SHEET NO. 2 OF 2 SHEETS STA. 21+00.00 TO STA. 34+00.00					
		DATE - 12-4-2009	REVISED -			FED. ROAD DIST. NO. ILLINOIS FED. AID PROJECT					
						CONTRACT NO. 63386					



MILLED TEMPORARY RAMP
(FOR BUTT JOINT AND HMA TAPER SEE DETAIL BELOW)

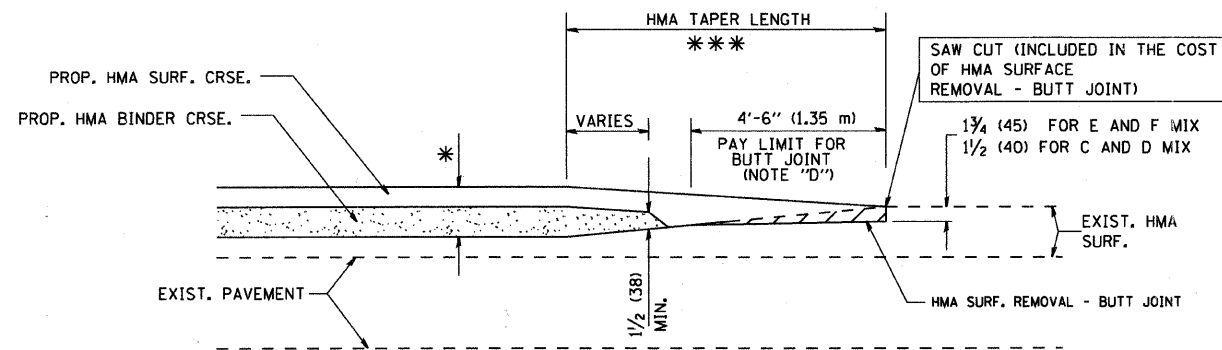
OPTION 1



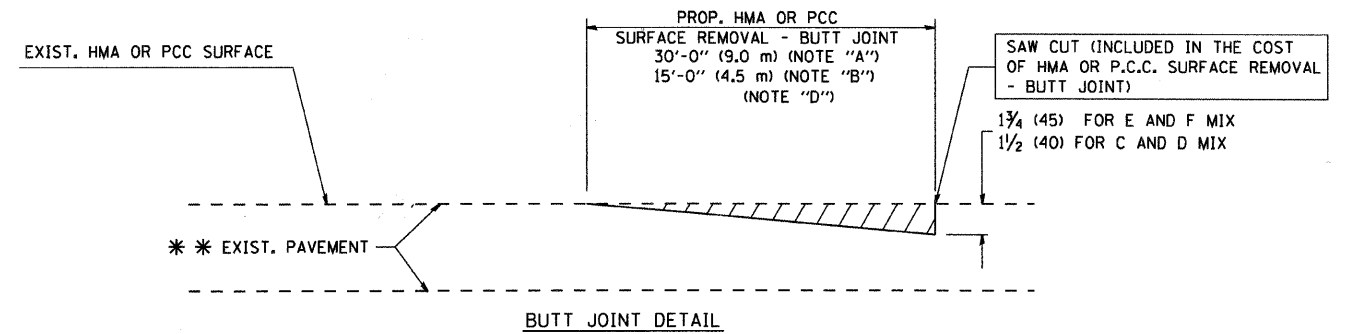
HMA CONSTRUCTED TEMPORARY RAMP
(FOR BUTT JOINT AND HMA TAPER SEE DETAIL BELOW)

OPTION 2

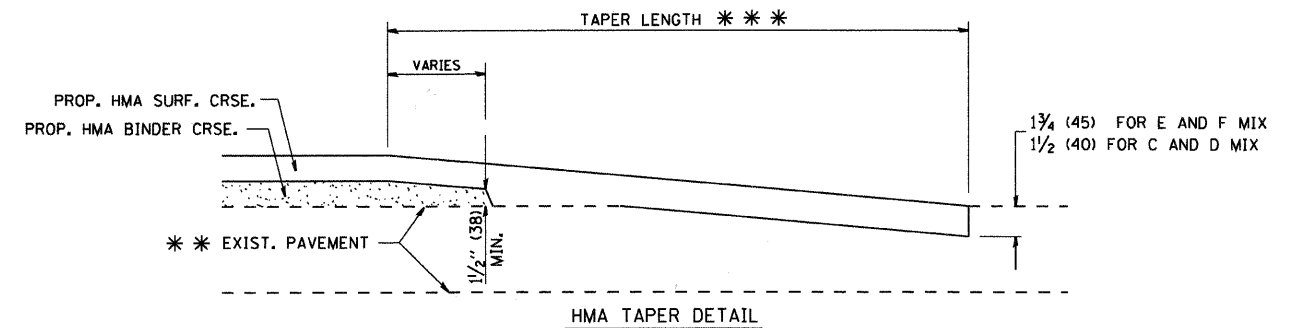
TYPICAL TEMPORARY RAMP



BUTT JOINT AND HMA TAPER
TYPICAL BUTT JOINT AND HMA TAPER FOR MILLING AND RESURFACING



BUTT JOINT DETAIL



HMA TAPER DETAIL

TYPICAL BUTT JOINT AND HMA TAPER FOR RESURFACING ONLY

*** PC CONCRETE, HMA OR HMA RESURFACED PAVEMENT.

NOTES

- A: MAINLINE ROADWAYS AND MAJOR SIDE ROADS.
 - B: MINOR SIDE ROADS.
 - C: THE TEMP. RAMP SHALL BE CONSTRUCTED IMMEDIATELY UPON REMOVAL OF THE EXISTING HMA SURFACE.
 - D: THE BUTT JOINT SHALL BE CONSTRUCTED IMMEDIATELY PRIOR TO PLACING THE PROPOSED HMA COURSES.
 - E: TAPER THE TEMP. RAMP AT A RATE OF 3'-0" (900 mm) PER 1 INCH (25 mm) OF MILLING THICKNESS.
 - F: INSTALLATION AND REMOVAL OF THE 4'-6" (1.35 m) TEMP. RAMP IS INCLUDED IN COST OF HMA SURFACE REMOVAL - BUTT JOINT
 - G: SEE ARTICLE 406.08 AND 406.14 OF THE STANDARD SPECIFICATIONS FOR "HMA AND/OR PCC SURFACE REMOVAL, BUTT JOINT".
- * SEE TYPICAL SECTIONS FOR MILLING THICKNESS.
- *** 20'-0" (6.1 m) PER 1 (25) RESURFACING (NOTE "A")
10'-0" (3.0 m) PER 1 (25) RESURFACING (NOTE "B")

BASIS OF PAYMENT:

THE BUTT JOINT WILL BE PAID FOR AT THE CONTRACT UNIT PRICE PER SQUARE YARD (SQUARE METER) FOR "HOT-MIX ASPHALT SURFACE REMOVAL - BUTT JOINT" OR FOR "PORTLAND CEMENT CONCRETE SURFACE REMOVAL - BUTT JOINT".

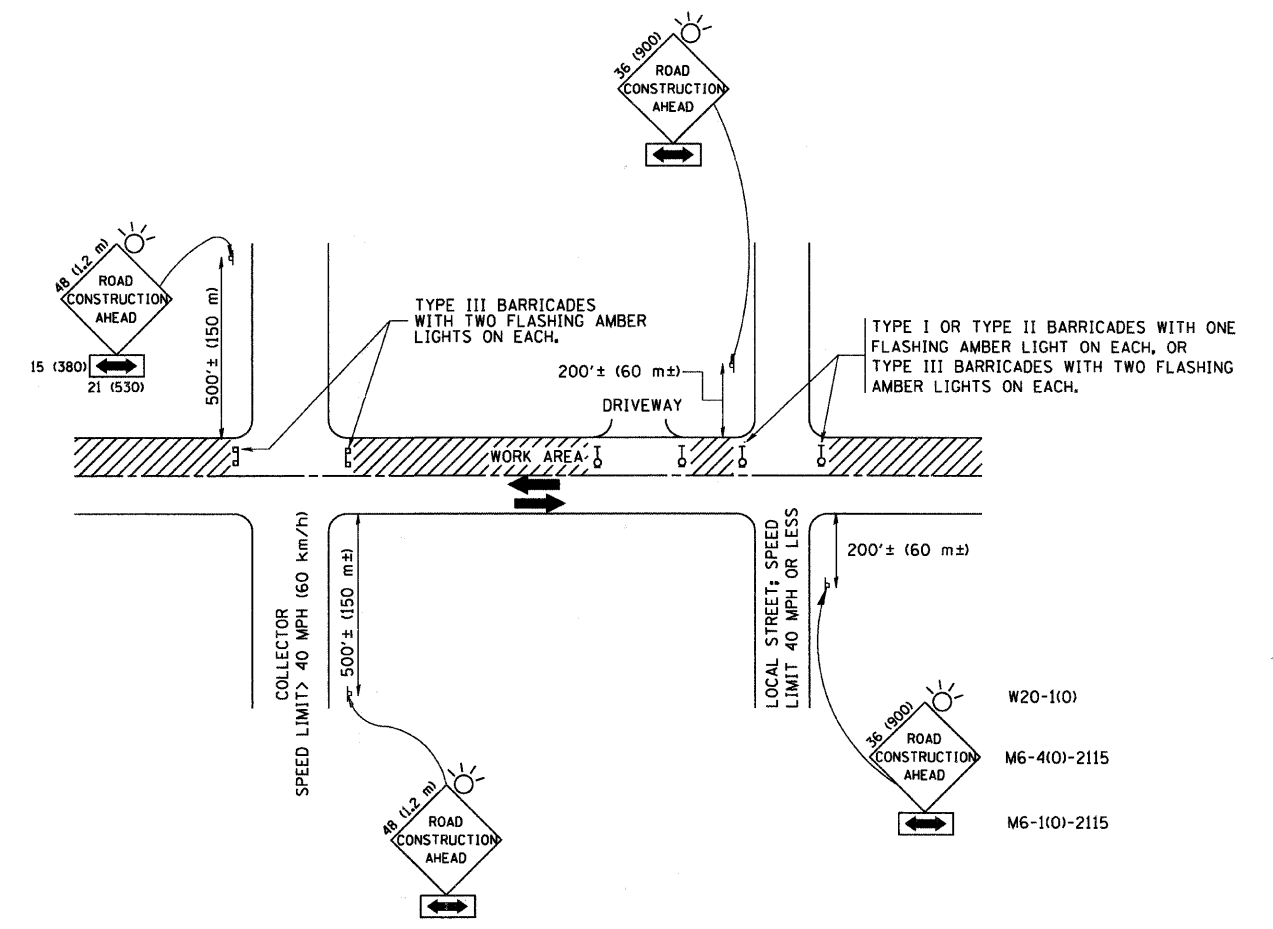
ALL DIMENSIONS ARE IN INCHES (MILLIMETERS) UNLESS OTHERWISE SHOWN.

FILE NAME = W:\distatd\22x34\bd32.dgn	USER NAME = gagl1enobt	DESIGNED - M. DE YONG	REVISED - R. SHAH 10-25-94
		DRAWN -	REVISED - A. ABBAS 03-21-97
	PLOT SCALE = 50,000 ' / IN.	CHECKED -	REVISED - M. GOMEZ 04-06-01
	PLOT DATE = 1/4/2008	DATE - 06-13-90	REVISED - R. BORO 01-01-07

**STATE OF ILLINOIS
DEPARTMENT OF TRANSPORTATION**

BUTT JOINT AND HMA TAPER DETAILS	
SCALE: NONE	SHEET NO. 1 OF 1 SHEETS
STA.	TO STA.

F.A.U. RTE.	SECTION	COUNTY	TOTAL SHEETS	SHEET NO.
4061	09-00371-00-RS	McHENRY	12	7
BD400-05 BD32			CONTRACT NO. 63386	
FED. ROAD DIST. NO. 1 ILLINOIS FED. AID PROJECT				



TRAFFIC CONTROL AND PROTECTION FOR SIDE ROADS, INTERSECTIONS, AND DRIVEWAYS

NOTES:

A. FOR NO LANE RESTRICTION ON THE SIDE ROAD OR DRIVEWAYS

1. SIDE ROAD WITH A SPEED LIMIT OF 40 MPH (60 km/h) OR LESS AS SHOWN ON THE DRAWING AND AS DIRECTED BY THE ENGINEER:
 - a) ONE ROAD CONSTRUCTION AHEAD SIGN 36 x 36 (900x900) WITH A FLASHER AND FLAG MOUNTED ON IT APPROXIMATELY 200' (60 m) IN ADVANCE OF THE MAIN ROUTE.
 - b) THE CLOSED PORTION OF THE MAIN ROUTE SHALL BE PROTECTED BY BLOCKING WITH TYPE I, TYPE II OR TYPE III BARRICADES, 1/3 OF THE CROSS SECTION OF THE CLOSED PORTION.
2. SIDE ROAD WITH A SPEED LIMIT GREATER THAN 40 MPH (60 km/h) AS SHOWN ON THE DRAWING AND AS DIRECTED BY THE ENGINEER:
 - a) ONE ROAD CONSTRUCTION AHEAD SIGN 48 x 48 (1,2 m x 1,2 m) WITH A FLASHER MOUNTED ON IT APPROXIMATELY 500' (150 m) IN ADVANCE OF THE MAIN ROUTE.
 - b) THE CLOSED PORTION OF THE MAIN ROUTE SHALL BE PROTECTED BY BLOCKING WITH TYPE III BARRICADES, 1/2 OF THE CROSS SECTION OF THE CLOSED PORTION.
3. WHEN THE SIDE ROAD LIES BETWEEN THE BEGINNING OF THE MAINLINE SIGNING AND THE WORK ZONE, A SINGLE HEADED ARROW (M6-1) SHALL BE USED IN LIEU OF THE DOUBLE HEADED ARROW (M6-4).

B. FOR A LANE CLOSURE ON A SIDE ROAD OR DRIVEWAY:

- USE APPLICABLE PORTIONS OF THE TYPICAL APPLICATION OF TRAFFIC CONTROL DEVICES (STD. 701501, STD. 701606 OR THE APPROPRIATE STANDARD). THE SPACING OF SIGNS AND BARRICADES SHALL BE ADJUSTED FOR FIELD CONDITIONS AS DIRECTED BY THE ENGINEER. THE DIRECTIONAL ARROW SHALL BE COVERED OR REMOVED WHEN NO LONGER CONSISTENT WITH THE SIDE ROAD LANE CLOSURE.
- C. ADVANCE WARNING SIGNS ARE TO BE OMITTED ON DRIVEWAY UNLESS OTHERWISE NOTED.
- D. THE TRAFFIC CONTROL AND PROTECTION FOR SIDE ROADS, INTERSECTIONS, AND DRIVEWAYS SHALL BE INCIDENTAL TO THE COST OF SPECIFIED TRAFFIC CONTROL STANDARDS OR ITEMS.

All dimensions are in millimeters (inches) unless otherwise shown.

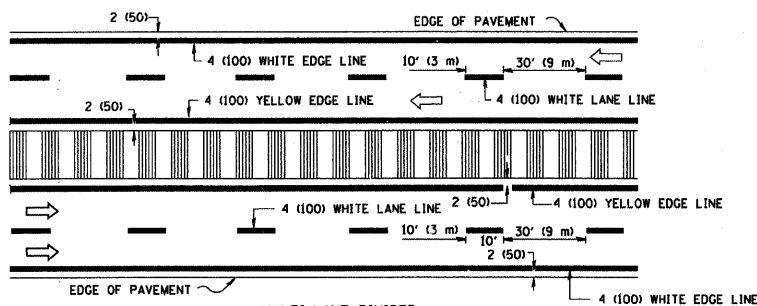
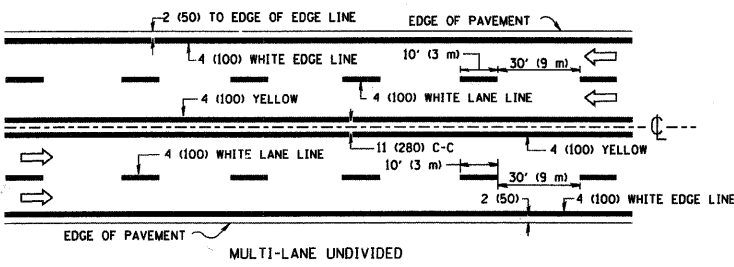
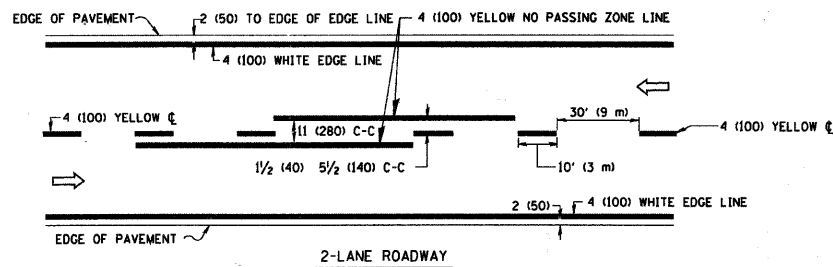
FILE NAME = W:\diststd\22x34\to18.dgn	USER NAME = geg1enobt	DESIGNED - LHA	REVISED - J. OBERLE 10-18-95
		DRAWN -	REVISED - A. HOUSEH 03-06-96
	PLOT SCALE = 50,000 / IN.	CHECKED -	REVISED - A. HOUSEH 10-15-96
	PLOT DATE = 1/4/2008	DATE - 06-89	REVISED - T. RAMMACHER 01-06-00

STATE OF ILLINOIS
DEPARTMENT OF TRANSPORTATION

TRAFFIC CONTROL AND PROTECTION FOR
SIDE ROADS, INTERSECTIONS, AND DRIVEWAYS

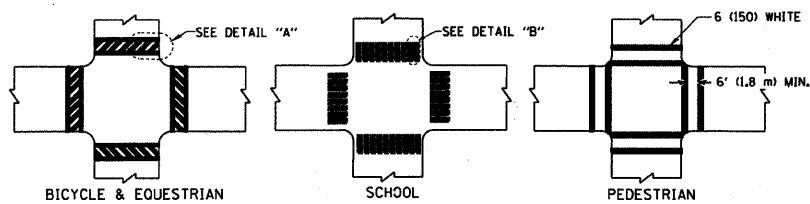
SCALE: NONE SHEET NO. 1 OF 1 SHEETS STA. TO STA.

F.A.U. RTE.	SECTION	COUNTY	TOTAL SHEETS	SHEET NO.
4061	09-00371-00-RS	MCHEMRY	12	8
TC-10			CONTRACT NO. 63386	
FED. ROAD DIST. NO. 1 ILLINOIS FED. AID PROJECT				

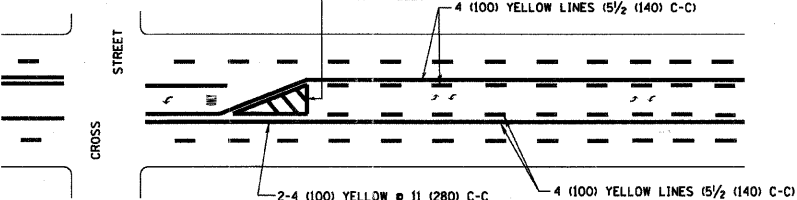
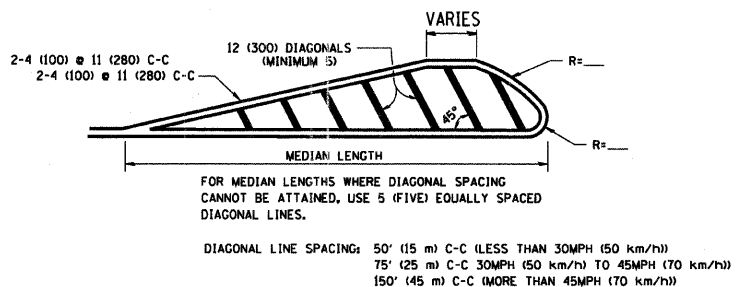
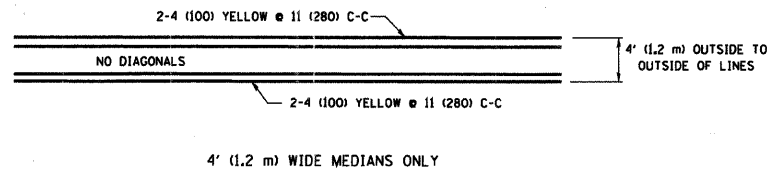


NOTE: MEDIANS WITH BARRIER CURB DO NOT REQUIRE AN EDGE LINE

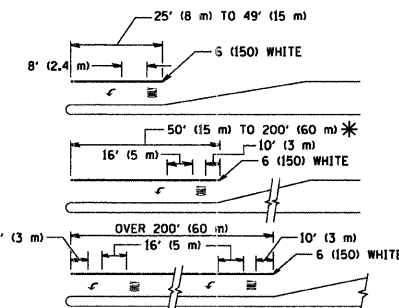
TYPICAL LANE AND EDGE LINE MARKING



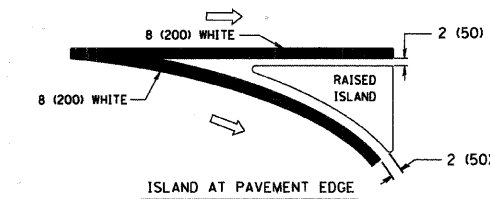
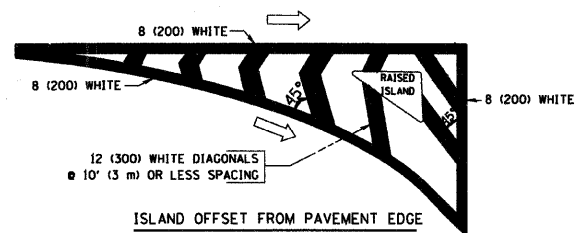
TYPICAL CROSSWALK MARKING



TYPICAL PAINTED MEDIAN MARKING



TYPICAL TURN LANE MARKING



TYPICAL ISLAND MARKING

TYPE OF MARKING	WIDTH OF LINE	PATTERN	COLOR	SPACING / REMARKS
CENTERLINE ON 2 LANE PAVEMENT	4 (100)	SKIP-DASH	YELLOW	10' (3 m) LINE WITH 30' (9 m) SPACE
CENTERLINE ON MULTI-LANE UNDIVIDED PAVEMENT	2 @ 4 (100)	SOLID	YELLOW	11 (280) C-C
NO PASSING ZONE LINES: FOR ONE DIRECTION FOR BOTH DIRECTIONS	4 (100) 2 @ 4 (100)	SOLID SOLID	YELLOW YELLOW	5/2 (140) C-C FROM SKIP-DASH CENTERLINE 11 (280) C-C OMIT SKIP-DASH CENTERLINE BETWEEN
LANE LINES	4 (100) 5 (125) ON FREEWAYS	SKIP-DASH SKIP-DASH	WHITE WHITE	10' (3 m) LINE WITH 30' (9 m) SPACE
DOTTED LINES (EXTENSIONS OF CENTER, LANE OR TURN LANE MARKINGS)	SAME AS LINE BEING EXTENDED	SKIP-DASH	SAME AS LINE BEING EXTENDED	2' (600) LINE WITH 6' (1.8 m) SPACE
EDGE LINES	4 (100)	SOLID	YELLOW-LEFT WHITE-RIGHT	OUTLINE MOUNTABLE MEDIANS IN YELLOW; EDGE LINES ARE NOT USED NEXT TO BARRIER CURB
TURN LANE MARKINGS	6 (150) LINE; FULL SIZE LETTERS & SYMBOLS (8' (2.4m))	SOLID	WHITE	SEE TYPICAL TURN LANE MARKING DETAIL
TWO WAY LEFT TURN MARKING	2 @ 4 (100) EACH DIRECTION 8' (2.4m) LEFT ARROW	SKIP-DASH AND SOLID IN PAIRS	YELLOW WHITE	10' (3 m) LINE WITH 30' (9 m) SPACE FOR SKIP-DASH; 5/2 (140) C-C BETWEEN SOLID LINE AND SKIP-DASH LINE SEE TYPICAL TWO-WAY LEFT TURN MARKING DETAIL
CROSSWALK LINES (PEDESTRIAN) A. DIAGONALS (BIKE & EQUESTRIAN) B. LONGITUDINAL BARS (SCHOOL)	2 @ 6 (150) 12 (300) @ 45° 12 (300) @ 90°	SOLID SOLID SOLID	WHITE WHITE WHITE	NOT LESS THAN 6' (1.8 m) APART 2' (600) APART 2' (600) APART SEE TYPICAL CROSSWALK MARKING DETAILS.
STOP LINES	24 (600)	SOLID	WHITE	PLACE 4' (1.2 m) IN ADVANCE OF AND PARALLEL TO CROSSWALK, IF PRESENT, OTHERWISE, PLACE AT DESIRED STOPPING POINT, PARALLEL TO CROSSROAD CENTERLINE, WHERE POSSIBLE
PAINTED MEDIANS	2 @ 4 (100) WITH 12 (300) DIAGONALS @ 45° NO DIAGONALS USED FOR 4' (1.2 m) WIDE MEDIANS	SOLID	YELLOW; TWO WAY TRAFFIC WHITE; ONE WAY TRAFFIC	11 (280) C-C FOR THE DOUBLE LINE SEE TYPICAL PAINTED MEDIAN MARKING.
GORE MARKING AND CHANNELIZING LINES	8 (200) WITH 12 (300) DIAGONALS @ 45°	SOLID	WHITE	DIAGONALS: 15' (4.5 m) C-C (LESS THAN 30MPH (50 km/h)) 20' (6 m) C-C 30MPH (50 km/h) TO 45MPH (70 km/h) 30' (9 m) C-C (OVER 45MPH (70 km/h))
RAILROAD CROSSING	24 (600) TRANSVERSE LINES; "RR" IS 6' (1.8 m) LETTERS; 16 (400) LINE FOR "X"	SOLID	WHITE	SEE STATE STANDARD 780001 AREA OF: "R": 3.6 SQ. FT. (0.33 m ²) EACH "X": 54.0 SQ. FT. (5.0 m ²)
SHOULDER DIAGONALS	12 (300) @ 45°	SOLID	WHITE - RIGHT YELLOW - LEFT	50' (15 m) C-C (LESS THAN 30MPH (50 km/h)) 75' (25 m) C-C (30 MPH (50 km/h) TO 45MPH (70 km/h)) 150' (45 m) C-C (OVER 45MPH (70 km/h))

FOR FURTHER DETAILS ON PAVEMENT MARKING REFER TO STANDARD SPECIFICATIONS FOR ROAD AND BRIDGE CONSTRUCTION AND STATE STANDARD 780001.

All dimensions are in inches (millimeters) unless otherwise shown.

FILE NAME =	USER NAME = drivakosen	DESIGNED - EVERS	REVISED - T. RAMMACHER 10-27-94
C:\pwork\pedit\drivakosgn\d0108315\to3.dgn		DRAWN -	REVISED - C. JUCIUS 09-09-09
	PLOT SCALE = 50,000' / IN.	CHECKED -	REVISED -
	PLOT DATE = 9/9/2009	DATE - 03-19-90	REVISED -

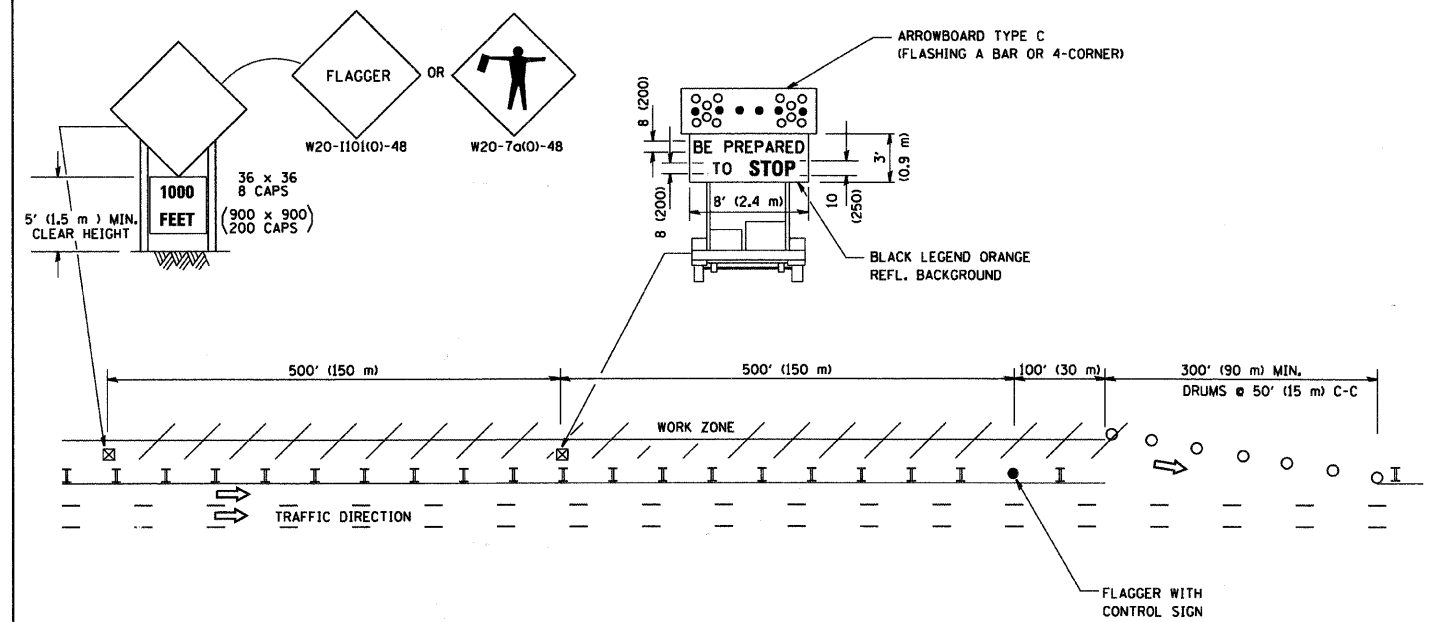
**STATE OF ILLINOIS
DEPARTMENT OF TRANSPORTATION**

DISTRICT ONE			
TYPICAL PAVEMENT MARKINGS			
SCALE: NONE	SHEET NO. 1 OF 1 SHEETS	STA.	TO STA.

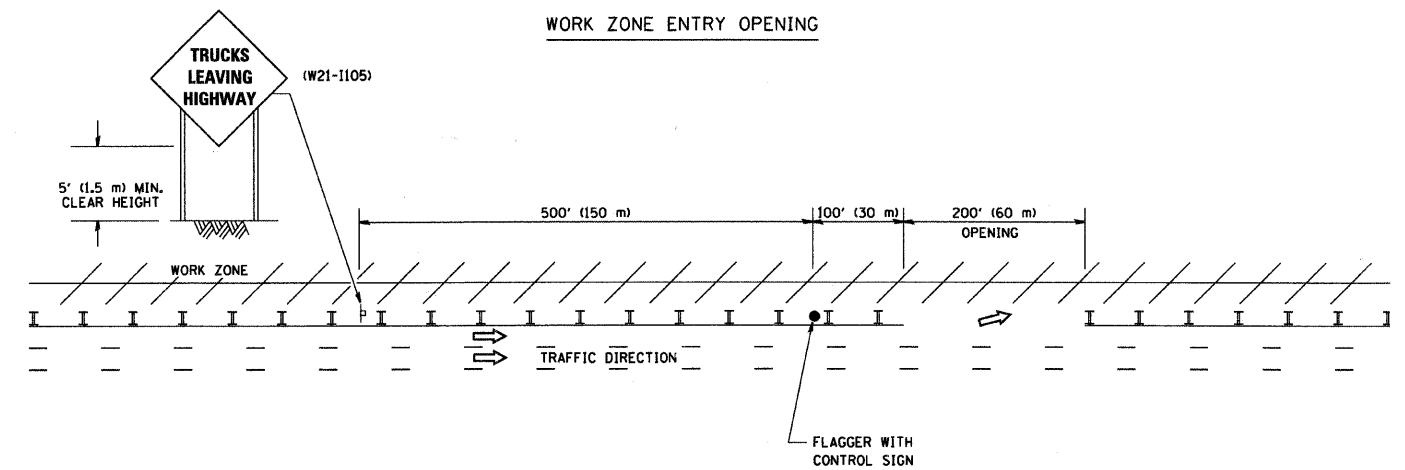
F.A.U. RTE.	SECTION	COUNTY	TOTAL SHEETS	SHEET NO.
4061	09-00371-00-RS	McHENRY	12	9
TC-13			CONTRACT NO. 63386	
FED. ROAD DIST. NO. 1 ILLINOIS FED. AID PROJECT				

SIGNING FOR FLAGGING OPERATIONS AT WORK ZONE OPENINGS

WORK ZONE EXIT OPENING



WORK ZONE ENTRY OPENING



NOTES:

1. THE ARROWBOARD, THE FLAGGER AHEAD SIGN AND THE TRUCKS LEAVING HIGHWAY SIGN SHALL BE REMOVED OR TURNED AWAY FROM TRAFFIC AND THE EXIT AND ENTRY NON OPERATING EQUIPMENT SHALL BE CLOSED WHEN THE FLAGGING OPERATION CEASES. NON OPERATING EQUIPMENT SHALL COMPLY WITH ARTICLE 701.11
2. WORK ZONE OPENINGS SHOULD BE A MINIMUM OF ONE HALF MILE APART.
3. EXITING THE WORK ZONE AT ANY PLACE OTHER THAN AT A WORK ZONE EXIT OPENING WILL BE PROHIBITED
4. ALL VEHICLES SHALL ENTER THE WORK ZONE AT ENTRY OPENINGS, USING THEIR TURN SIGNALS TO WARN MOTORISTS.

ALL DIMENSIONS ARE IN INCHES (MILLIMETERS)
UNLESS OTHERWISE SHOWN

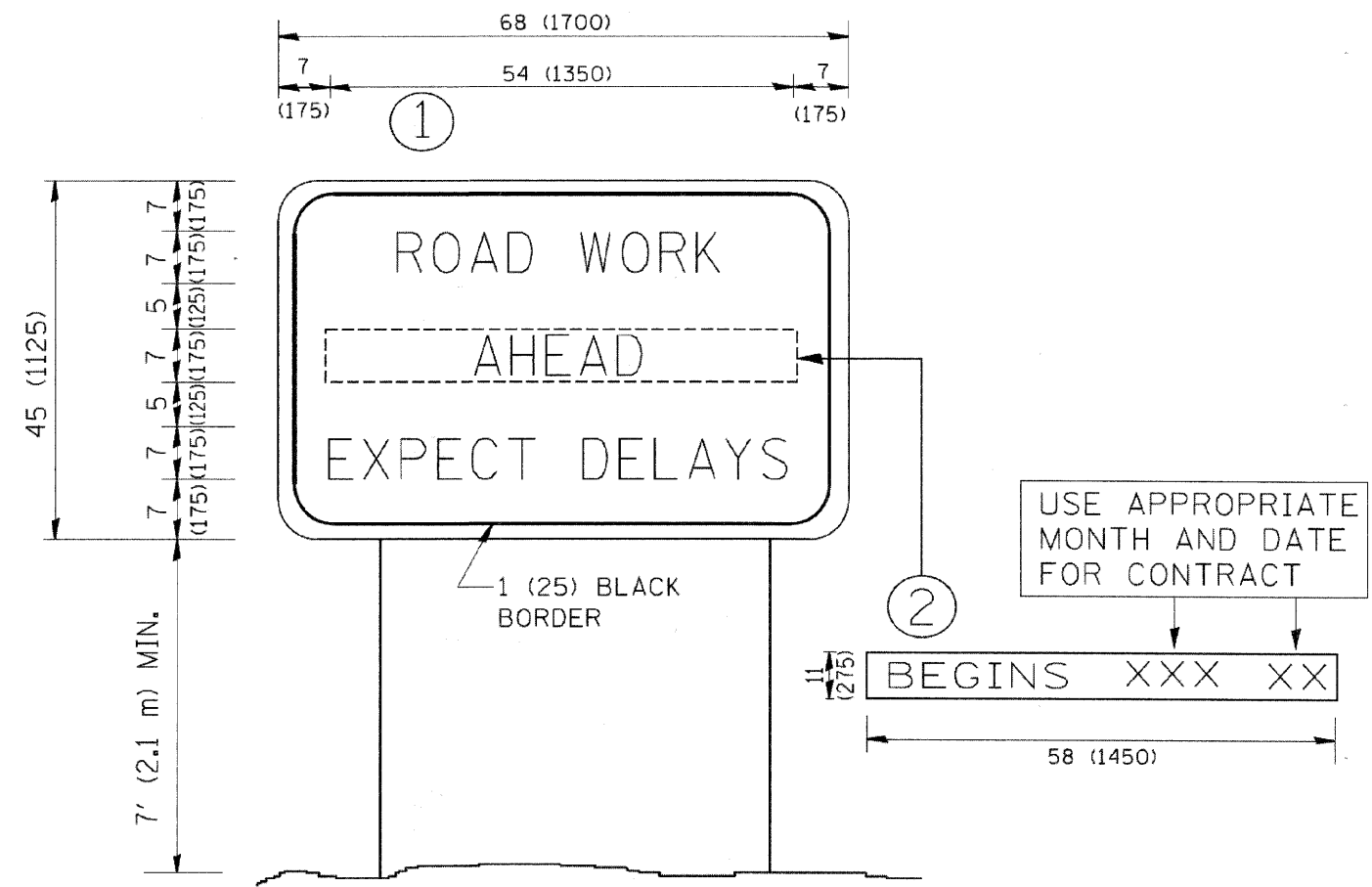
FILE NAME = W:\distatd\22x34\to18.dgn	USER NAME = layso	DESIGNED -	REVISED - J.A.F. 04-03
		DRAWN -	REVISED - J.A.F. 02-06
	PLOT SCALE = 50,000' / IN.	CHECKED -	REVISED - S.P.B. 01-07
	PLOT DATE = 1/26/2010	DATE -	REVISED - S.P.B. 12-09

**STATE OF ILLINOIS
DEPARTMENT OF TRANSPORTATION**

**SIGNING FOR FLAGGING OPERATIONS
AT WORK ZONE OPENINGS**

SCALE: NONE SHEET NO. 1 OF 1 SHEETS STA. TO STA.

F.A.U. RTE.	SECTION	COUNTY	TOTAL SHEETS	SHEET NO.
4061	09-00371-00-RS	McHENRY	12	10
TC-18			CONTRACT NO. 63386	
FED. ROAD DIST. NO. 1 ILLINOIS FED. AID PROJECT				



NOTES:

1. USE BLACK LETTERING ON ORANGE BACKGROUND.
2. ERECT SIGNS IN ADVANCE OF THE LOCATION FOR THE "ROAD CONSTRUCTION AHEAD" SIGN AT LOCATIONS AS DIRECTED BY THE ENGINEER.
3. ERECT SIGN ① WITH INSTALLED PANEL ② ONE WEEK PRIOR TO THE START OF CONSTRUCTION.
4. REMOVE PANEL ② SOON AFTER THE START OF CONSTRUCTION.
5. SEE SPECIAL PROVISION FOR "TEMPORARY INFORMATION SIGNING" FOR ADDITIONAL INFORMATION.
6. ONE SIGN ASSEMBLY EQUALS 25.70 SQ. FT. (2.3 SQ. M.)
7. SHALL BE PAID FOR AS TEMPORARY INFORMATION SIGNING.

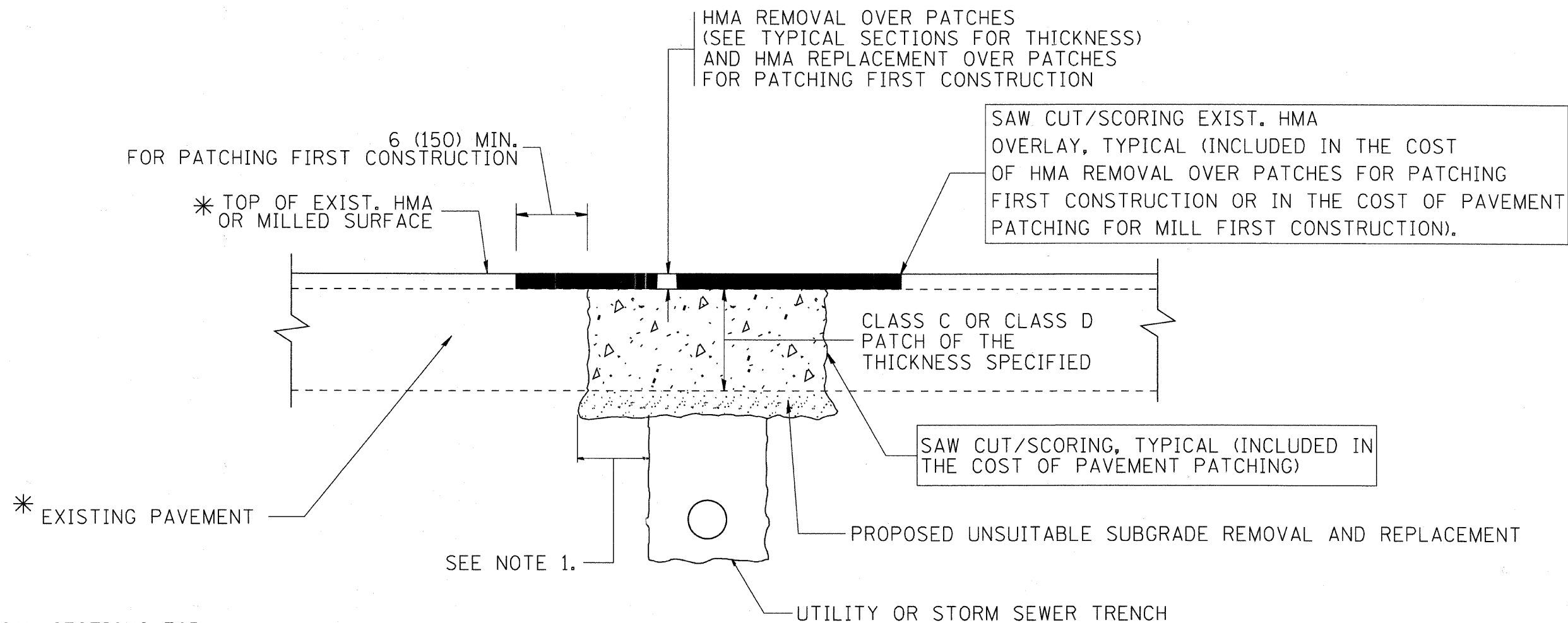
ALL DIMENSIONS ARE IN INCHES (MILLIMETERS) UNLESS OTHERWISE SHOWN.

FILE NAME = W:\diststd\22x34\tc22.dgn	USER NAME = geglienobt	DESIGNED - DRAWN -	REVISED - REVISED -
		REVISOR - CHECKED -	REVISOR - CHECKED -
		DATE - DATE -	REVISOR - REVISOR -

STATE OF ILLINOIS
DEPARTMENT OF TRANSPORTATION

ARTERIAL ROAD INFORMATION SIGN			
SCALE: NONE	SHEET NO. 1 OF 1 SHEETS	STA.	TO STA.

F.A.U. RTE. 4061	SECTION 09-00371-00-RS	COUNTY MCHENRY	TOTAL SHEETS 12	SHEET NO. 11
TC-22		CONTRACT NO. 63386		
FED. ROAD DIST. NO. 1 ILLINOIS FED. AID PROJECT				



* SEE TYPICAL SECTIONS FOR THICKNESS AND MATERIALS

NOTES:

1. THE WIDTH OF THE FULL DEPTH PATCH OVER A TRENCH SHALL BE 12 (300) WIDER ON EACH SIDE OF THE TRENCH.
2. FOR METHOD OF MEASUREMENT AND BASIS OF PAYMENT, SEE RECURRING SPECIAL PROVISION "PATCHING WITH HOT-MIX ASPHALT OVERLAY REMOVAL".

SEQUENCE OF CONSTRUCTION (PATCHING FIRST)

1. REMOVE THE EXISTING HMA MATERIAL OVER THE AREA TO BE PATCHED.
2. REMOVE AND REPLACE WITH CLASS C OR D PATCH.
3. REPLACE HMA MATERIAL OVER THE AREA TO BE PATCHED.

SEQUENCE OF CONSTRUCTION (MILLING FIRST)

1. MILL HMA FIRST IF THERE IS AT LEAST 4 1/2 INCHES OR MORE OF HMA MATERIAL ON TOP OF THE EXISTING PAVEMENT OR IF THE PAVEMENT IS FULL DEPTH HMA. A MINIMUM OF 2 INCHES OF HMA MATERIAL SHALL BE IN PLACE AFTER MILLING.
2. REMOVE AND REPLACE WITH FULL DEPTH CLASS D PATCHES TO TOP OF MILLED SURFACE.

ALL DIMENSIONS ARE IN INCHES (MILLIMETERS) UNLESS OTHERWISE SHOWN.

FILE NAME = c:\projects\distatd22x34\bd22.dgn	USER NAME = bauerdl	DESIGNED - R. SHAH	REVISED - A. ABBAS 04-27-98	STATE OF ILLINOIS DEPARTMENT OF TRANSPORTATION	PAVEMENT PATCHING FOR HMA SURFACED PAVEMENT		F.A.U. RTE.	SECTION	COUNTY	TOTAL SHEETS	SHEET NO.	
		DRAWN -	REVISED - R. BORO 01-01-07		SCALE: NONE	SHEET NO. 1 OF 1 SHEETS	STA.	TO STA.	09-003971-00-RS	MCHENRY	12	12
		PLOT SCALE = 50,000' / IN.	REVISED - R. BORO 09-04-07						BD400-04 (BD-22)	CONTRACT NO. 63386		
		PLOT DATE = 10/27/2008	REVISED - K. ENG 10-27-08						FED. ROAD DIST. NO. 1 ILLINOIS FED. AID PROJECT			