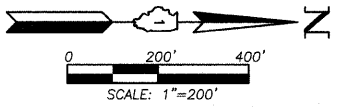


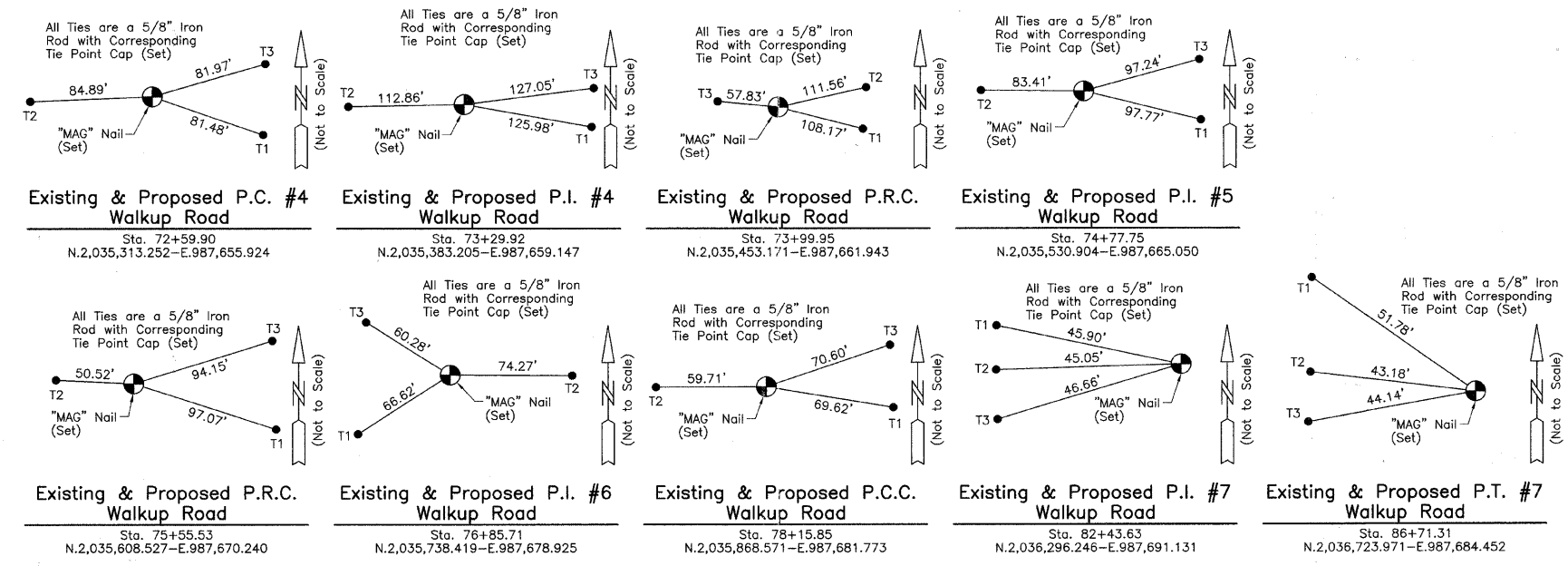
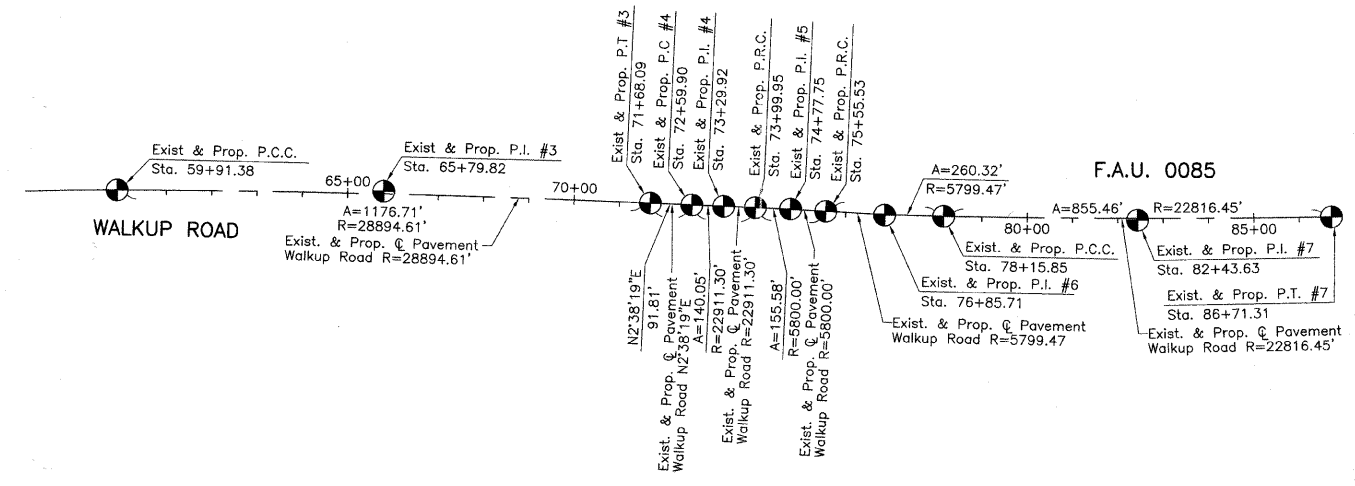
F.A.U. RTE.	SECTION	COUNTY	TOTAL SHEETS	SHEET NO.
0085	00-00246-02-FP	MCHENRY	292	030
STA. 59+91.38		TO STA. 86+71.31		
FED. ROAD DIST. NO. 1		ILLINOIS	FED. AID PROJECT	
CONTRACT NO: 63522				



Christian H. Jorgensen 7/26/10
 PRESIDENT
 ILLINOIS PROFESSIONAL LAND SURVEYOR NO. 35-2797
 LICENSE EXPIRATION DATE: NOVEMBER 30, 2010



Existing & Proposed Pavement Walkup Road Curve #3	Existing & Proposed Pavement Walkup Road Curve #4	Existing & Proposed Pavement Walkup Road Curve #5	Existing & Proposed Pavement Walkup Road Curve #6	Existing & Proposed Pavement Walkup Road Curve #7
P.I. = Sta. 65+79.82	P.I. = Sta. 73+29.92	P.I. = Sta. 74+77.75	P.I. = Sta. 76+85.71	P.I. = Sta. 82+43.63
Δ = 2°20'00"	Δ = 0°21'01"	Δ = 1°32'13"	Δ = 2°34'19"	Δ = 2°08'54"
R = 28894.61'	R = 22911.30'	R = 5800.00'	R = 5799.47'	R = 22816.45'
T = 588.44'	T = 70.02'	T = 77.80'	T = 130.18'	T = 427.78'
L = 1176.71'	L = 140.05'	L = 155.58'	L = 260.32'	L = 855.46'
E = 5.99'	E = 0.11'	E = 0.52'	E = 1.46'	E = 4.01'
P.C.C. = Sta. 59+91.38	P.C. = Sta. 72+59.90	P.R.C. = Sta. 73+99.95	P.R.C. = Sta. 75+55.53	P.C.C. = Sta. 78+15.85
P.T. = Sta. 71+68.09	P.R.C. = Sta. 73+99.95	P.R.C. = Sta. 75+55.53	P.C.C. = Sta. 78+15.85	P.T. = Sta. 86+71.31



REVISIONS	
NAME	DATE

MCHENRY COUNTY DIVISION OF TRANSPORTATION
 WALKUP ROAD F.A.U. 0085

ALIGNMENT AND TIES

SCALE: 1"=200' DRAWN BY: KLK
 DATE: July 26, 2010 CHECKED BY: CHJ

JORGENSEN & ASSOCIATES, INC. 120 PARK AVENUE
 (847) 356-3371 LAKE VILLA, ILLINOIS 60046