

F.A.U. SECTION	COUNTY	TOTAL SHEETS	SHEET NO.
0085 00-00246-02-FP	MCHENRY	292	033
STA. TO STA.	FED. ROAD DIST. NO. 1 ILLINOIS	FED. AID PROJECT	
	CONTRACT NO: 63522		

PLAN

REVISED	
NOTED	
ALIGNED	
CHECKED	
DATE	
FILE NAME	

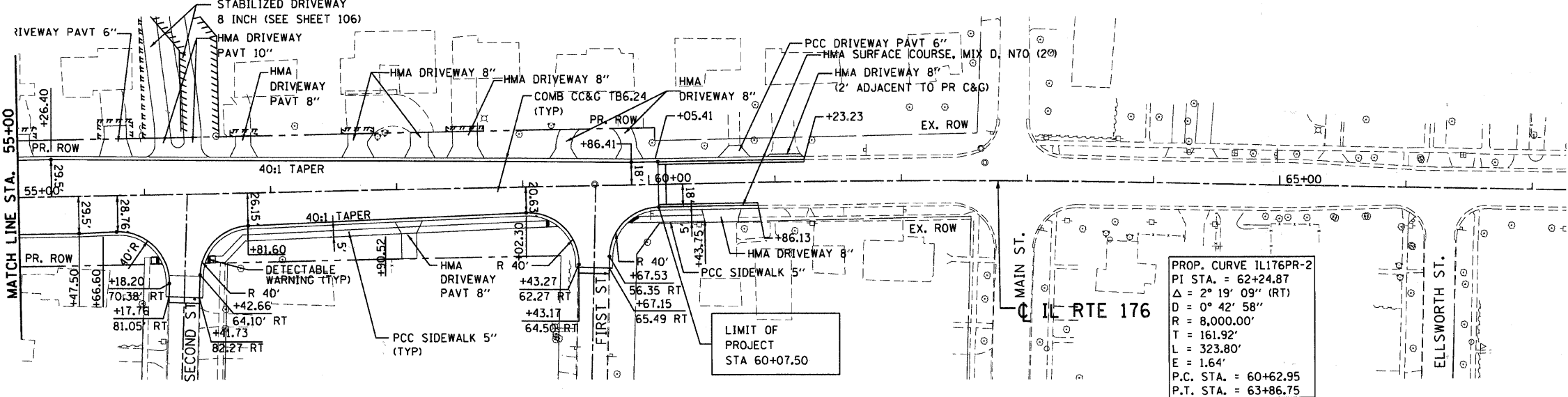
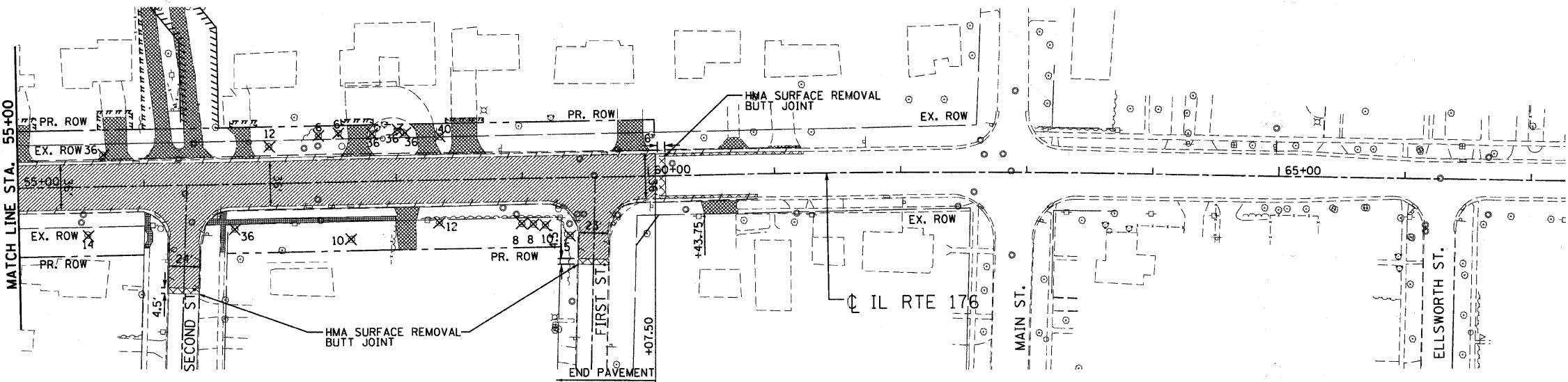
PROFILE

REVISED	
NOTED	
GRADES	
CHECKED	
STRUCTURE	
DATE	
NOTATIONS	

AL02A002.DGN
 V:\S-004\AMVA\J.L.D. TRANS.07.2202.300-03\CIVIL\CAD.02 CONTRACT\1\A TENG SHEET\PROJ24002\2\51\ANR\1
 1 2 3 4 5 6 7 8 9 10 11 12 13 14 15 16 17 18 19 20 21 22 23 24 25 26 27 28 29 30 31 32 33 34 35 36 37 38 39 40 41 42 43 44 45 46 47 48 49 50 51 52 53 54 55 56 57 58 59 60 61 62 63

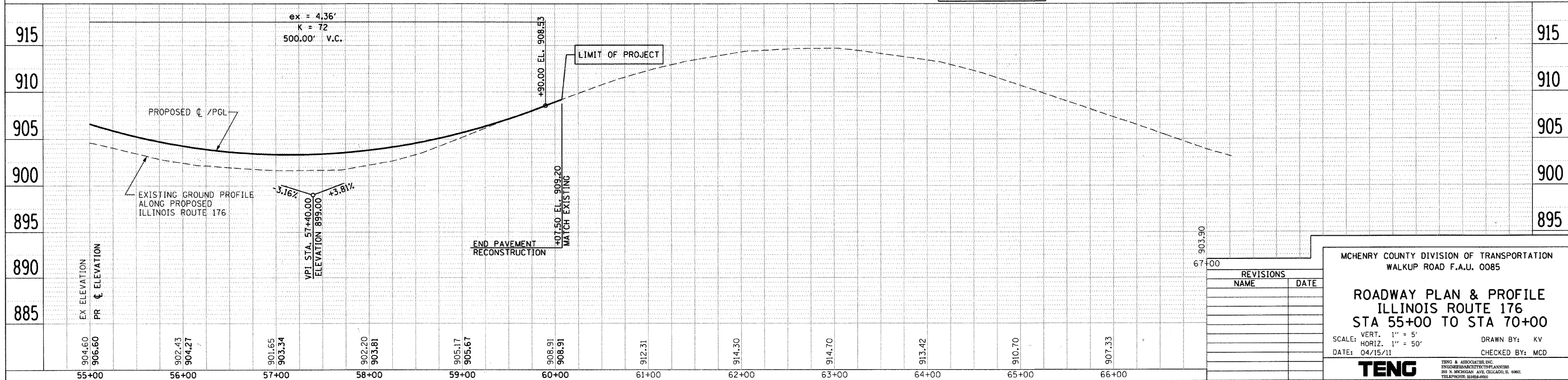
EXISTING PLAN

PROPOSED PLAN



REMOVAL LEGEND

- [Hatched Box] PAVEMENT REMOVAL
- [Cross-hatched Box] HOT-MIX ASPHALT SURFACE REMOVAL, VARIABLE DEPTH (SEE NOTE 1 SHEET 032)
- [Diagonal Lines] DRIVEWAY PAVEMENT REMOVAL
- [Solid Grey Box] SIDEWALK REMOVAL
- [Dashed Line] LINEAR REMOVALS
- [Circle with X] TREE REMOVAL (WITH DIAMETER)



REVISIONS	
NAME	DATE

MCHENRY COUNTY DIVISION OF TRANSPORTATION
 WALKUP ROAD F.A.U. 0085

**ROADWAY PLAN & PROFILE
 ILLINOIS ROUTE 176
 STA 55+00 TO STA 70+00**

SCALE: VERT. 1" = 5'
 HORIZ. 1" = 50'

DATE: 04/15/11
 DRAWN BY: KV
 CHECKED BY: MCD

TENG
 TENG & ASSOCIATES, INC.
 393 N. MICHIGAN AVE., CHICAGO, IL 60606
 TEL: (312) 620-6600