

DATE: _____
 PLAN: _____
 REVISIONS: _____
 CHECKED: _____
 DATE: _____

DATE: _____
 PROFILE: _____
 REVISIONS: _____
 CHECKED: _____
 DATE: _____

DATE: _____
 PLAN: _____
 REVISIONS: _____
 CHECKED: _____
 DATE: _____

DATE: _____
 PROFILE: _____
 REVISIONS: _____
 CHECKED: _____
 DATE: _____

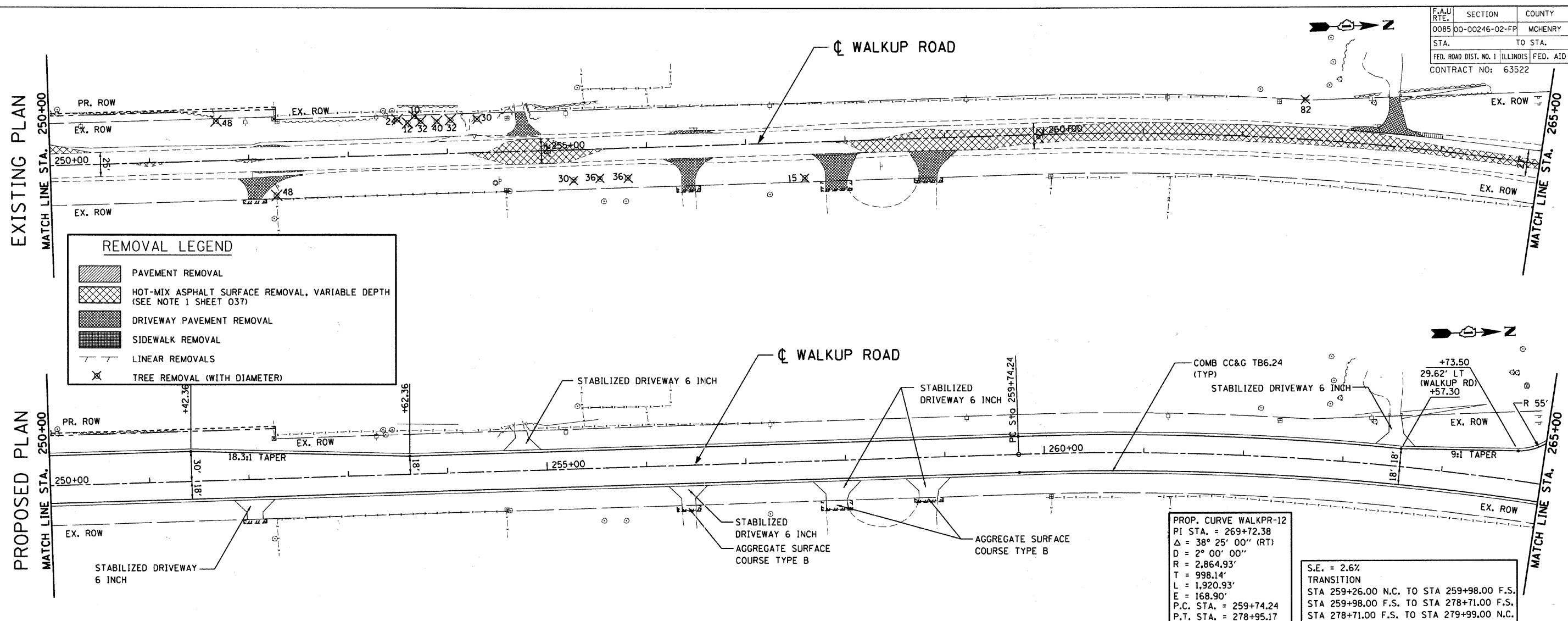
F.A.U. RTE.	SECTION	COUNTY	TOTAL SHEETS	SHEET NO.
0085 00-00246-02-FP	MCHENRY	ILLINOIS	292	039
STA.	TO STA.			
FED. ROAD DIST. NO. 1	FED. AID PROJECT			
CONTRACT NO: 63522				

EXISTING PLAN

PROPOSED PLAN

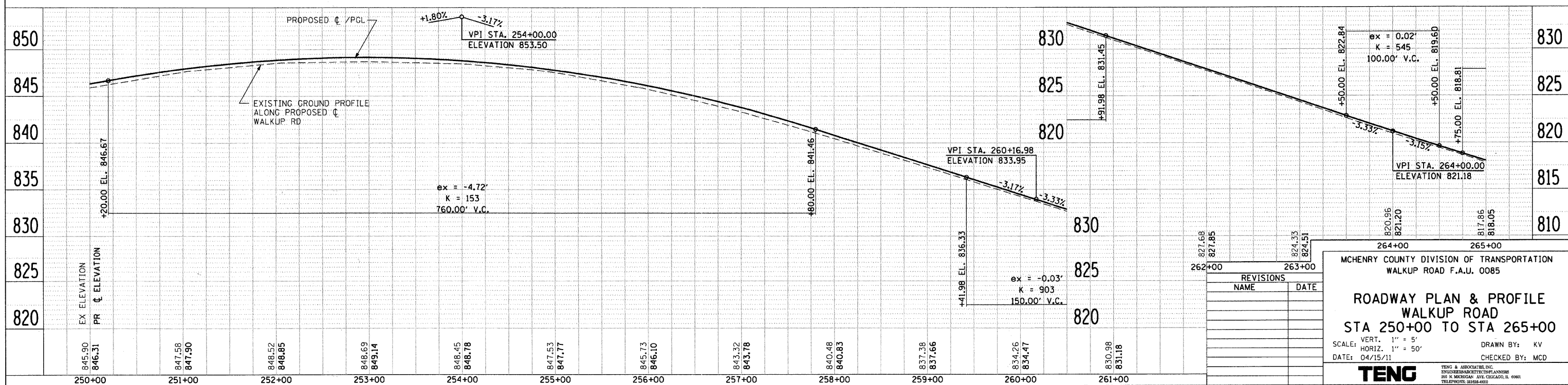
REMOVAL LEGEND

- PAVEMENT REMOVAL
- HOT-MIX ASPHALT SURFACE REMOVAL, VARIABLE DEPTH (SEE NOTE 1 SHEET 037)
- DRIVEWAY PAVEMENT REMOVAL
- SIDEWALK REMOVAL
- LINEAR REMOVALS
- TREE REMOVAL (WITH DIAMETER)



PROP. CURVE WALKPR-12
 PI STA. = 269+72.38
 $\Delta = 38^\circ 25' 00''$ (RT)
 $D = 2^\circ 00' 00''$
 $R = 2,864.93'$
 $L = 1,920.93'$
 $E = 168.90'$
 P.C. STA. = 259+74.24
 P.T. STA. = 278+95.17

S.E. = 2.6%
 TRANSITION
 STA 259+26.00 N.C. TO STA 259+98.00 F.S.
 STA 259+98.00 F.S. TO STA 278+71.00 F.S.
 STA 278+71.00 F.S. TO STA 279+99.00 N.C.



REVISIONS	
NAME	DATE

MCHENRY COUNTY DIVISION OF TRANSPORTATION
 WALKUP ROAD F.A.U. 0085

ROADWAY PLAN & PROFILE
WALKUP ROAD
STA 250+00 TO STA 265+00

SCALE: VERT. 1" = 5'
 HORIZ. 1" = 50'

DATE: 04/15/11

DRAWN BY: KV
 CHECKED BY: MCD

TENG

TENG & ASSOCIATES, INC.
 ENGINEERS ARCHITECTS AND SURVEYORS
 302 N. MICHIGAN AVE. CHICAGO, IL 60610
 TELEPHONE: 312.666-4600