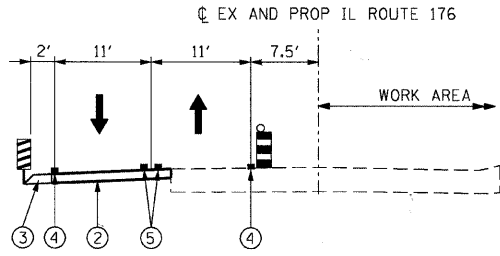
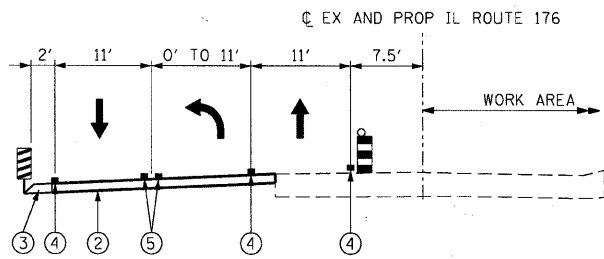


F.A.U. RTE.	SECTION	COUNTY	TOTAL SHEETS	SHEET NO.
0085	00-00246-02-FP	MCHENRY	292	055
STA.		TO STA.		
FED. ROAD DIST. NO. 1		ILLINOIS	FED. AID PROJECT	
CONTRACT NO: 63522				



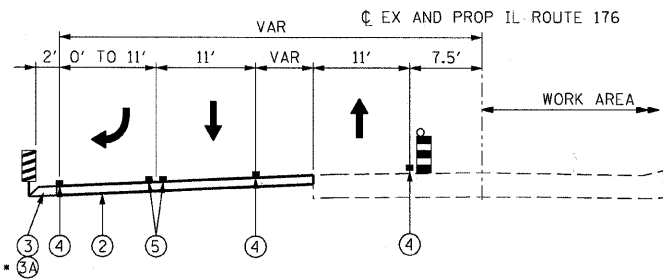
MOT TYPICAL SECTION

STAGE 1
 STA 40+88.73 TO STA 45+54.09
 STA 54+95.33 TO STA 60+63.86



MOT TYPICAL SECTION

STAGE 1
 STA 45+54.09 TO STA 50+00.00 (WALKUP RD)



MOT TYPICAL SECTION

STAGE 1
 STA 50+00.00 (WALKUP RD) TO STA 54+95.33

SEE PLAN SHEETS FOR LOCATION

LEGEND:

- VERTICAL PANEL W/
STEADY BURNING LIGHT
- DRUM W/
STEADY BURNING LIGHT
- DIRECTION OF TRAFFIC

- ① EXISTING PAVEMENT MARKING
- ② TEMPORARY PAVEMENT
- ③ TEMPORARY SHOULDER (PAID AS TEMP PAVEMENT)
- ④A COMBINATION CURB & GUTTER, TYPE B-6.24 (TEMPORARY)
- ④ TEMPORARY PAVEMENT MARKING - 4" (WHITE)
- ⑤ TEMPORARY PAVEMENT MARKING - 4" (YELLOW)
- ⑥ PROPOSED PAVEMENT MARKING

REVISIONS	
NAME	DATE

MCHENRY COUNTY DIVISION OF TRANSPORTATION
 WALKUP ROAD F.A.U. 0085

MAINTENANCE OF TRAFFIC
 TYPICAL SECTIONS
 STAGE 1, SHEET 1 OF 2

SCALE: N.T.S. DRAWN BY: TL
 DATE: 06/10/11 CHECKED BY: KA

TENG

TENG & ASSOCIATES, INC.
 ENGINEERS/ARCHITECTS/PLANNERS
 205 N. MICHIGAN AVE. CHICAGO, IL 60611
 TELEPHONE: 312.587.9000

\\S:\0344\AMVAULT_ID-TRANS-07\2202\300-03\CIVIL\CAD\02 CONTRACT\A_TENG\SHEET\M\02\A004.SHT
 6-09-2011 6:36:03
 1 2 3 4 5 6 7 8 9 10 11 12 13 14 15 16 17 18 19 20 21 22 23 24 25 26 27 28 29 30 31 32 33 34 35 36 37 38 39 40 41 42 43 44 45 46 47 48 49 50 51 52 53 54 55 56 57 58 59 60 61 62 63
 S:\ANKR\J