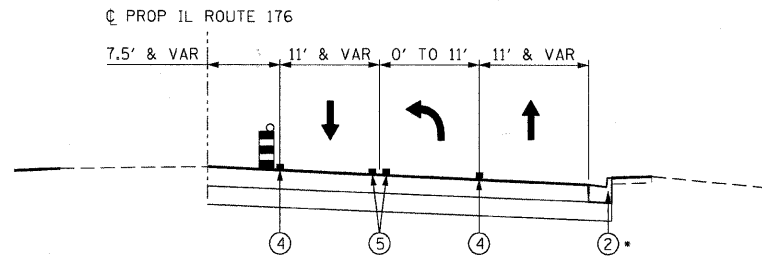
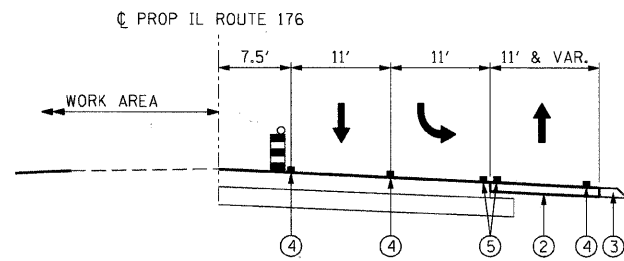


F.A.U. RTE.	SECTION	COUNTY	TOTAL SHEETS	SHEET NO.
0085	00-00246-02-FP	MCHENRY	292	057
STA.		TO STA.		
FED. ROAD DIST. NO. 1		ILLINOIS FED. AID PROJECT		
CONTRACT NO: 63522				



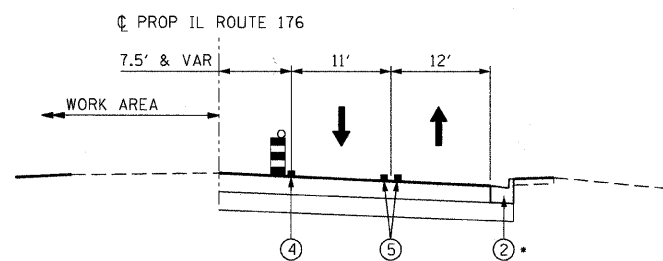
MOT TYPICAL SECTION

STAGE 2  
 STA 40+88.69 TO STA 50+00.00 (WALKUP RD)  
 STA 41+00.00 TO STA 43+76.22 (TEMP PAVEMENT 2' MIN, SEE PLAN SHEETS)



MOT TYPICAL SECTION

STAGE 2  
 STA 50+00.00 (WALKUP ROAD) TO STA 53+56.48



MOT TYPICAL SECTION

STAGE 2  
 STA 53+56.48 TO STA 61+23.21  
 STA 57+27.50 TO STA 60+86.06 (TEMP PAVEMENT 2' MIN)

LEGEND:

- VERTICAL PANEL W/ STEADY BURNING LIGHT
- DRUM W/ STEADY BURNING LIGHT
- DIRECTION OF TRAFFIC

- ① EXISTING PAVEMENT MARKING
- ② TEMPORARY PAVEMENT
- ③ TEMPORARY SHOULDER (PAID AS TEMP PAVEMENT)
- ④A COMBINATION CURB & GUTTER, TYPE B-6.24 (TEMPORARY)
- ④ TEMPORARY PAVEMENT MARKING - 4" (WHITE)
- ⑤ TEMPORARY PAVEMENT MARKING - 4" (YELLOW)
- ⑥ PROPOSED PAVEMENT MARKING

REVISIONS	
NAME	DATE

MCHENRY COUNTY DIVISION OF TRANSPORTATION  
 WALKUP ROAD F.A.U. 0085

MAINTENANCE OF TRAFFIC  
 TYPICAL SECTIONS  
 STAGE 2, SHEET 1 OF 2

SCALE: N.T.S. DRAWN BY: TL  
 DATE: 06/10/11 CHECKED BY: KA

**TENG**

TENG & ASSOCIATES, INC.  
 ENGINEERS AND ARCHITECTS  
 200 N. MICHIGAN AVE. CHICAGO, IL 60601  
 TELEPHONE: 312.666.6600

:N102024008.DGN, ..BD919A00.DGN  
 6-09-2011 16:36:09  
 1 2 3 4 5 6 7 8 9 10 11 12 13 14 15 16 17 18 19 20 21 22 23 24 25 26 27 28 29 30 31 32 33 34 35 36 37 38 39 40 41 42 43 44 45 46 47 48 49 50 51 52 53 54 55 56 57 58 59 60 61 62 63