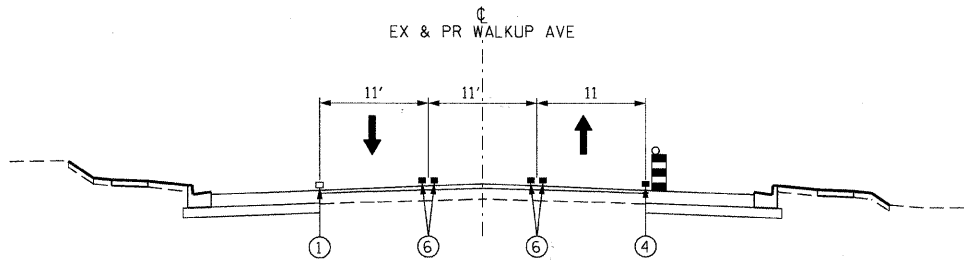
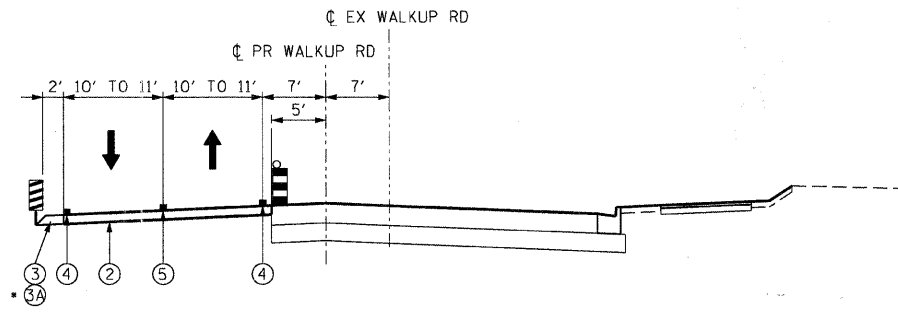


F.A.U. RTE.	SECTION	COUNTY	TOTAL SHEETS	SHEET NO.
0085	00-00246-02-FP	MCHENRY	292	058
STA.		TO STA.		
FED. ROAD DIST. NO. 1 ILLINOIS FED. AID PROJECT				
CONTRACT NO: 63522				



MOT TYPICAL SECTION

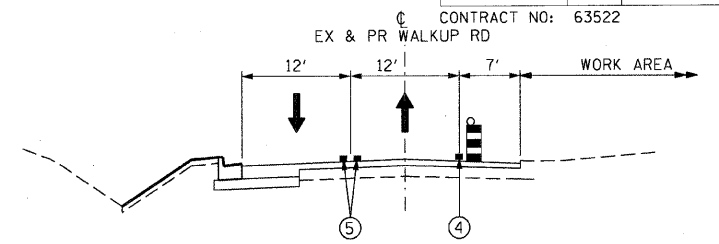
STAGE 2  
STA 43+22.55 TO STA 46+40.46 (GATES ST)



MOT TYPICAL SECTION

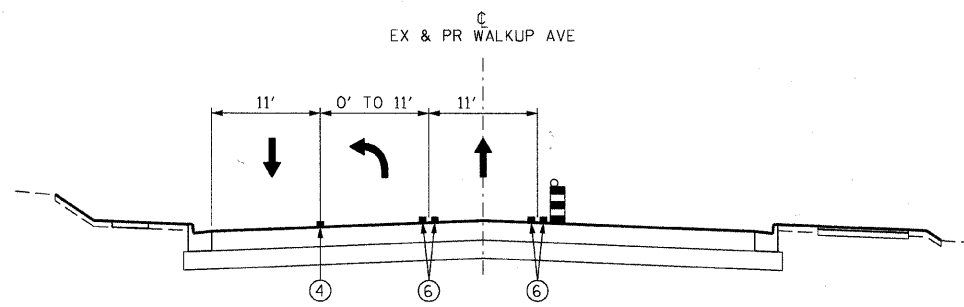
STAGE 2  
STA 54+11.15 TO STA 59+96.66  
STA 59+96.66 TO STA 63+38.86 (VETERANS ACRE PARK ENTRANCE)

SEE PLAN SHEETS FOR LOCATION



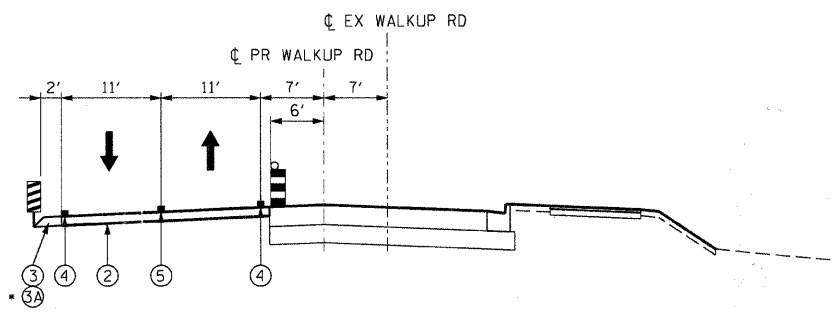
MOT TYPICAL SECTION

STAGE 2  
STA 225+00.00 TO STA 227+92.45 (ANVIL DR)  
STA 232+85.92 TO STA 235+58.90 (COACHLIGHT RD)  
STA 240+51.56 TO STA 244+20.00  
STA 244+20.00 TO STA 245+80.00 (LANES SHIFT TO RT OF C)



MOT TYPICAL SECTION

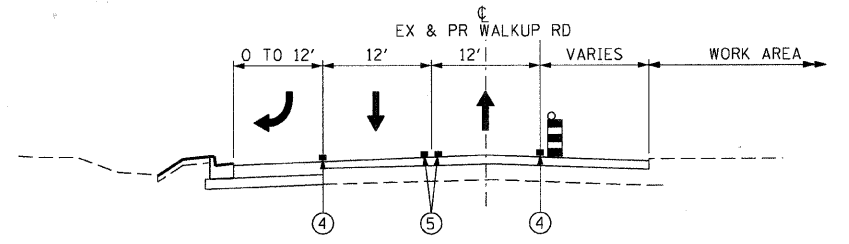
STAGE 2  
STA 46+40.46 (GATES ST) TO STA 50+00.00 (IL RTE 176)



MOT TYPICAL SECTION

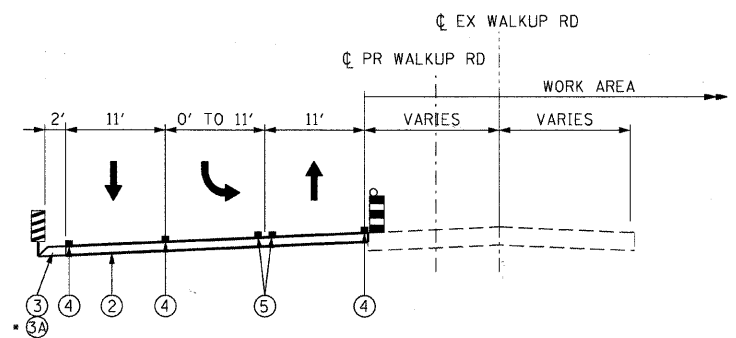
STAGE 2  
STA 63+38.86 TO STA 76+42.41

SEE PLAN SHEETS FOR LOCATION



MOT TYPICAL SECTION

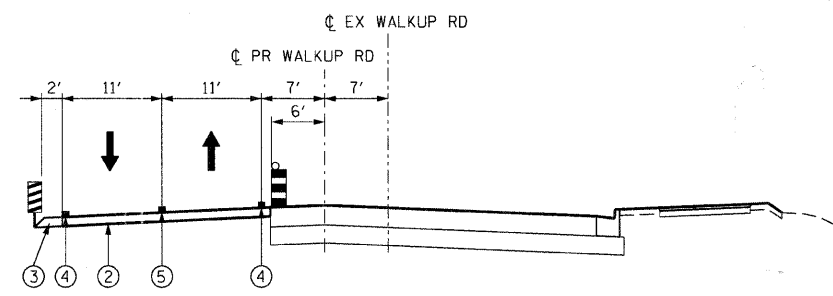
STAGE 2  
STA 229+21.74 (ANVIL DR) TO STA 232+85.92  
STA 236+81.04 (COACHLIGHT RD) TO STA 240+51.56



MOT TYPICAL SECTION

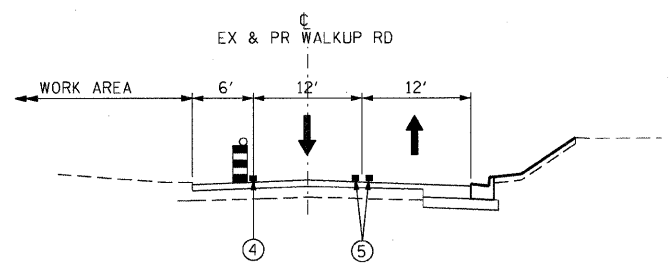
STAGE 2  
STA 50+00.00 TO STA 54+11.15

SEE PLAN SHEETS FOR LOCATION



MOT TYPICAL SECTION

STAGE 2  
STA 76+42.41 TO STA 81+53.97 (BURNING BUSH TR)



MOT TYPICAL SECTION

STAGE 2  
STA 245+80.00 TO STA 265+22.74 (MASON HILL RD)  
STA 265+95.55 TO STA 307+45.00

LEGEND:

- VERTICAL PANEL W/  
STEADY BURNING LIGHT
- DRUM W/  
STEADY BURNING LIGHT
- DIRECTION OF TRAFFIC

- ① EXISTING PAVEMENT MARKING
- ② TEMPORARY PAVEMENT
- ③ TEMPORARY SHOULDER (PAID AS TEMP PAVEMENT)
- ③A COMBINATION CURB & GUTTER, TYPE B-6.24 (TEMPORARY)
- ④ TEMPORARY PAVEMENT MARKING - 4" (WHITE)
- ⑤ TEMPORARY PAVEMENT MARKING - 4" (YELLOW)
- ⑥ PROPOSED PAVEMENT MARKING

\* LEFT TURN LANE/ PAINTED MEDIAN/ TWO WAY LEFT TURN LANE

REVISIONS	
NAME	DATE

MCHENRY COUNTY DIVISION OF TRANSPORTATION  
WALKUP ROAD F.A.U. 0085

MAINTENANCE OF TRAFFIC  
TYPICAL SECTIONS  
STAGE 2, SHEET 2 OF 2

SCALE: N.T.S. DRAWN BY: TL  
DATE: 06/10/11 CHECKED BY: KA



TENG & ASSOCIATES, INC.  
ENGINEERS/ARCHITECTS/PLANNERS  
200 N. MICHIGAN AVE. CHICAGO, IL 60601  
TELEPHONE: 312.587.6000

N:\MTO2\008.DGN - N:\B099\A00\JON - TRANS - 07\2202\300-03\CIVIL\CAAD\02 CONTRACT\IA TENC\SHEET\MTO2A005.SH  
 6-09-2011 16:36:05  
 12 3 14 15 16 17 18 19 20 21 22 23 24 25 26 27 28 29 30 31 32 33 34 35 36 37 38 39 40 41 42 43 44 45 46 47 48 49 50 51 52 53 54 55 56 57 58 59 60 61 62 63