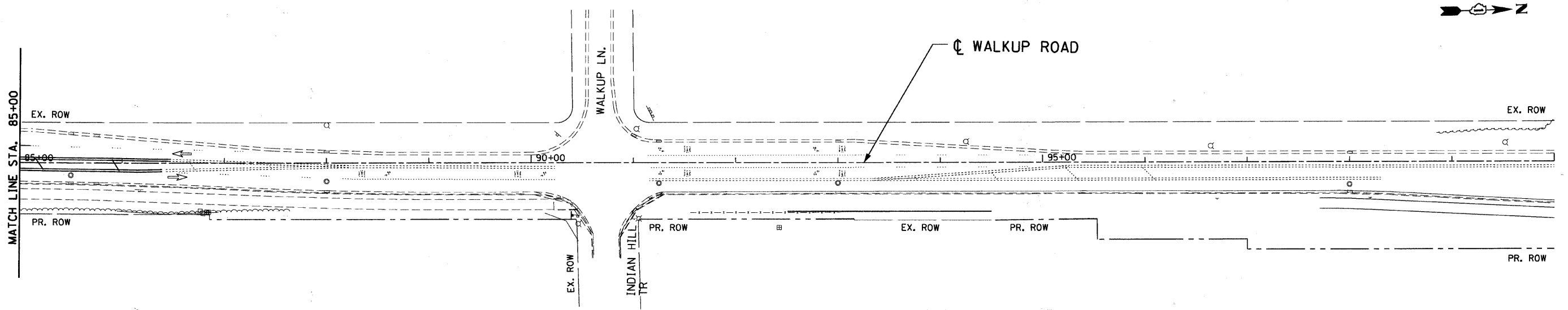
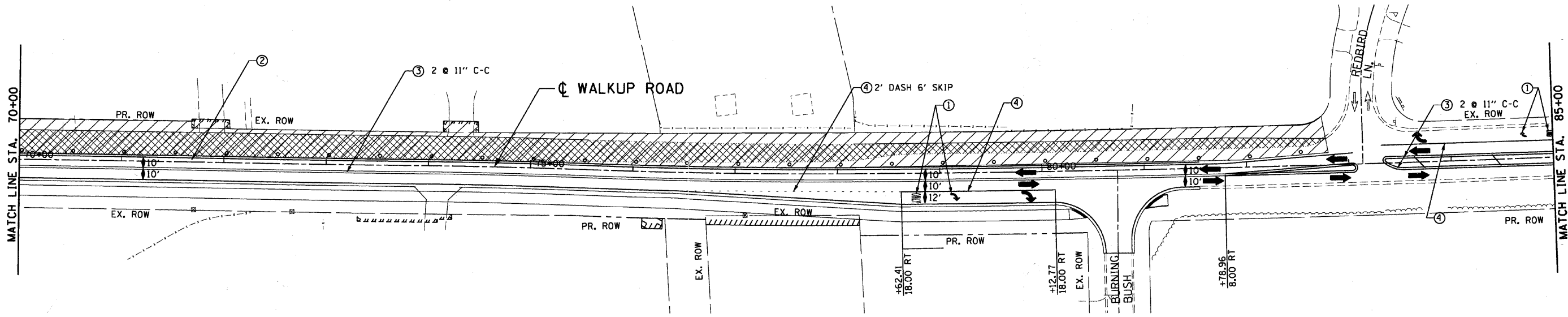


F.A.U. RTE.	SECTION	COUNTY	TOTAL SHEETS	SHEET NO.
0085 00-00246-02-FP	MCHENRY		292	077
STA.	TO STA.			
FED. ROAD DIST. NO. 1	ILLINOIS	FED. AID PROJECT		
CONTRACT NO: 63522				



**LEGEND**

- WORK AREA
- TEMPORARY PAVEMENT
- TEMPORARY PAVEMENT FROM PREVIOUS STAGE
- BARRICADE, TYPE III, W/ TY A FLASHER
- PREVIOUS TRAFFIC PATTERN
- PR TRAFFIC PATTERN
- SIGN
- VERTICAL PANEL W/ STEADY BURNING LIGHT
- DRUMS WITH STEADY BURNING LIGHT @ 50' C-C
- TYPE B MONODIRECTIONAL FLASHING LIGHT

**PAVEMENT MARKING LEGEND**

- ① TEMPORARY PAVEMENT MARKING LETTERS AND SYMBOLS
- ② TEMPORARY PAVEMENT MARKING -LINE 4 inch (WHITE)
- ③ TEMPORARY PAVEMENT MARKING -LINE 4 inch (YELLOW)
- ④ TEMPORARY PAVEMENT MARKING -LINE 6 inch (WHITE)
- ⑤ TEMPORARY PAVEMENT MARKING -LINE 8 inch (YELLOW)
- ⑥ TEMPORARY PAVEMENT MARKING -LINE 12 inch (YELLOW)
- ⑦ TEMPORARY PAVEMENT MARKING -LINE 24 inch (WHITE)

REVISIONS	
NAME	DATE

MCHENRY COUNTY DIVISION OF TRANSPORTATION  
WALKUP ROAD F.A.U. 0085

**MOT & STAGE 3 CONSTRUCTION**  
**WALKUP ROAD**  
**STA 70+00 TO STA 100+00**

SCALE: 1" = 50'      DRAWN BY: CC  
DATE: 06/10/11      CHECKED BY: KA

**TENG**  
TENG & ASSOCIATES, INC.  
ENGINEERS/ARCHITECTS/PLANNERS  
300 N. MICHIGAN AVE. CHICAGO, IL 60601  
TELEPHONE: 312.664.6000

\\AL02A002.DGN, \\FR02A002.DGN, \\RW02A002.DGN, \\MT02A002.DGN, \\AL02A003.DGN, \\FR02A003.DGN, \\RW02A003.DGN, \\MT02A003.DGN, \\AL02A004.DGN, \\FR02A004.DGN, \\RW02A004.DGN, \\MT02A004.DGN, \\AL02A005.DGN, \\FR02A005.DGN, \\RW02A005.DGN, \\MT02A005.DGN, \\AL02A006.DGN, \\FR02A006.DGN, \\RW02A006.DGN, \\MT02A006.DGN, \\AL02A007.DGN, \\FR02A007.DGN, \\RW02A007.DGN, \\MT02A007.DGN, \\AL02A008.DGN, \\FR02A008.DGN, \\RW02A008.DGN, \\MT02A008.DGN, \\AL02A009.DGN, \\FR02A009.DGN, \\RW02A009.DGN, \\MT02A009.DGN, \\AL02A010.DGN, \\FR02A010.DGN, \\RW02A010.DGN, \\MT02A010.DGN, \\AL02A011.DGN, \\FR02A011.DGN, \\RW02A011.DGN, \\MT02A011.DGN, \\AL02A012.DGN, \\FR02A012.DGN, \\RW02A012.DGN, \\MT02A012.DGN, \\AL02A013.DGN, \\FR02A013.DGN, \\RW02A013.DGN, \\MT02A013.DGN, \\AL02A014.DGN, \\FR02A014.DGN, \\RW02A014.DGN, \\MT02A014.DGN, \\AL02A015.DGN, \\FR02A015.DGN, \\RW02A015.DGN, \\MT02A015.DGN, \\AL02A016.DGN, \\FR02A016.DGN, \\RW02A016.DGN, \\MT02A016.DGN, \\AL02A017.DGN, \\FR02A017.DGN, \\RW02A017.DGN, \\MT02A017.DGN, \\AL02A018.DGN, \\FR02A018.DGN, \\RW02A018.DGN, \\MT02A018.DGN, \\AL02A019.DGN, \\FR02A019.DGN, \\RW02A019.DGN, \\MT02A019.DGN, \\AL02A020.DGN, \\FR02A020.DGN, \\RW02A020.DGN, \\MT02A020.DGN, \\AL02A021.DGN, \\FR02A021.DGN, \\RW02A021.DGN, \\MT02A021.DGN, \\AL02A022.DGN, \\FR02A022.DGN, \\RW02A022.DGN, \\MT02A022.DGN, \\AL02A023.DGN, \\FR02A023.DGN, \\RW02A023.DGN, \\MT02A023.DGN, \\AL02A024.DGN, \\FR02A024.DGN, \\RW02A024.DGN, \\MT02A024.DGN, \\AL02A025.DGN, \\FR02A025.DGN, \\RW02A025.DGN, \\MT02A025.DGN, \\AL02A026.DGN, \\FR02A026.DGN, \\RW02A026.DGN, \\MT02A026.DGN, \\AL02A027.DGN, \\FR02A027.DGN, \\RW02A027.DGN, \\MT02A027.DGN, \\AL02A028.DGN, \\FR02A028.DGN, \\RW02A028.DGN, \\MT02A028.DGN, \\AL02A029.DGN, \\FR02A029.DGN, \\RW02A029.DGN, \\MT02A029.DGN, \\AL02A030.DGN, \\FR02A030.DGN, \\RW02A030.DGN, \\MT02A030.DGN, \\AL02A031.DGN, \\FR02A031.DGN, \\RW02A031.DGN, \\MT02A031.DGN, \\AL02A032.DGN, \\FR02A032.DGN, \\RW02A032.DGN, \\MT02A032.DGN, \\AL02A033.DGN, \\FR02A033.DGN, \\RW02A033.DGN, \\MT02A033.DGN, \\AL02A034.DGN, \\FR02A034.DGN, \\RW02A034.DGN, \\MT02A034.DGN, \\AL02A035.DGN, \\FR02A035.DGN, \\RW02A035.DGN, \\MT02A035.DGN, \\AL02A036.DGN, \\FR02A036.DGN, \\RW02A036.DGN, \\MT02A036.DGN, \\AL02A037.DGN, \\FR02A037.DGN, \\RW02A037.DGN, \\MT02A037.DGN, \\AL02A038.DGN, \\FR02A038.DGN, \\RW02A038.DGN, \\MT02A038.DGN, \\AL02A039.DGN, \\FR02A039.DGN, \\RW02A039.DGN, \\MT02A039.DGN, \\AL02A040.DGN, \\FR02A040.DGN, \\RW02A040.DGN, \\MT02A040.DGN, \\AL02A041.DGN, \\FR02A041.DGN, \\RW02A041.DGN, \\MT02A041.DGN, \\AL02A042.DGN, \\FR02A042.DGN, \\RW02A042.DGN, \\MT02A042.DGN, \\AL02A043.DGN, \\FR02A043.DGN, \\RW02A043.DGN, \\MT02A043.DGN, \\AL02A044.DGN, \\FR02A044.DGN, \\RW02A044.DGN, \\MT02A044.DGN, \\AL02A045.DGN, \\FR02A045.DGN, \\RW02A045.DGN, \\MT02A045.DGN, \\AL02A046.DGN, \\FR02A046.DGN, \\RW02A046.DGN, \\MT02A046.DGN, \\AL02A047.DGN, \\FR02A047.DGN, \\RW02A047.DGN, \\MT02A047.DGN, \\AL02A048.DGN, \\FR02A048.DGN, \\RW02A048.DGN, \\MT02A048.DGN, \\AL02A049.DGN, \\FR02A049.DGN, \\RW02A049.DGN, \\MT02A049.DGN, \\AL02A050.DGN, \\FR02A050.DGN, \\RW02A050.DGN, \\MT02A050.DGN, \\AL02A051.DGN, \\FR02A051.DGN, \\RW02A051.DGN, \\MT02A051.DGN, \\AL02A052.DGN, \\FR02A052.DGN, \\RW02A052.DGN, \\MT02A052.DGN, \\AL02A053.DGN, \\FR02A053.DGN, \\RW02A053.DGN, \\MT02A053.DGN, \\AL02A054.DGN, \\FR02A054.DGN, \\RW02A054.DGN, \\MT02A054.DGN, \\AL02A055.DGN, \\FR02A055.DGN, \\RW02A055.DGN, \\MT02A055.DGN, \\AL02A056.DGN, \\FR02A056.DGN, \\RW02A056.DGN, \\MT02A056.DGN, \\AL02A057.DGN, \\FR02A057.DGN, \\RW02A057.DGN, \\MT02A057.DGN, \\AL02A058.DGN, \\FR02A058.DGN, \\RW02A058.DGN, \\MT02A058.DGN, \\AL02A059.DGN, \\FR02A059.DGN, \\RW02A059.DGN, \\MT02A059.DGN, \\AL02A060.DGN, \\FR02A060.DGN, \\RW02A060.DGN, \\MT02A060.DGN, \\AL02A061.DGN, \\FR02A061.DGN, \\RW02A061.DGN, \\MT02A061.DGN, \\AL02A062.DGN, \\FR02A062.DGN, \\RW02A062.DGN, \\MT02A062.DGN, \\AL02A063.DGN, \\FR02A063.DGN, \\RW02A063.DGN, \\MT02A063.DGN, \\AL02A064.DGN, \\FR02A064.DGN, \\RW02A064.DGN, \\MT02A064.DGN, \\AL02A065.DGN, \\FR02A065.DGN, \\RW02A065.DGN, \\MT02A065.DGN, \\AL02A066.DGN, \\FR02A066.DGN, \\RW02A066.DGN, \\MT02A066.DGN, \\AL02A067.DGN, \\FR02A067.DGN, \\RW02A067.DGN, \\MT02A067.DGN, \\AL02A068.DGN, \\FR02A068.DGN, \\RW02A068.DGN, \\MT02A068.DGN, \\AL02A069.DGN, \\FR02A069.DGN, \\RW02A069.DGN, \\MT02A069.DGN, \\AL02A070.DGN, \\FR02A070.DGN, \\RW02A070.DGN, \\MT02A070.DGN, \\AL02A071.DGN, \\FR02A071.DGN, \\RW02A071.DGN, \\MT02A071.DGN, \\AL02A072.DGN, \\FR02A072.DGN, \\RW02A072.DGN, \\MT02A072.DGN, \\AL02A073.DGN, \\FR02A073.DGN, \\RW02A073.DGN, \\MT02A073.DGN, \\AL02A074.DGN, \\FR02A074.DGN, \\RW02A074.DGN, \\MT02A074.DGN, \\AL02A075.DGN, \\FR02A075.DGN, \\RW02A075.DGN, \\MT02A075.DGN, \\AL02A076.DGN, \\FR02A076.DGN, \\RW02A076.DGN, \\MT02A076.DGN, \\AL02A077.DGN, \\FR02A077.DGN, \\RW02A077.DGN, \\MT02A077.DGN, \\AL02A078.DGN, \\FR02A078.DGN, \\RW02A078.DGN, \\MT02A078.DGN, \\AL02A079.DGN, \\FR02A079.DGN, \\RW02A079.DGN, \\MT02A079.DGN, \\AL02A080.DGN, \\FR02A080.DGN, \\RW02A080.DGN, \\MT02A080.DGN, \\AL02A081.DGN, \\FR02A081.DGN, \\RW02A081.DGN, \\MT02A081.DGN, \\AL02A082.DGN, \\FR02A082.DGN, \\RW02A082.DGN, \\MT02A082.DGN, \\AL02A083.DGN, \\FR02A083.DGN, \\RW02A083.DGN, \\MT02A083.DGN, \\AL02A084.DGN, \\FR02A084.DGN, \\RW02A084.DGN, \\MT02A084.DGN, \\AL02A085.DGN, \\FR02A085.DGN, \\RW02A085.DGN, \\MT02A085.DGN, \\AL02A086.DGN, \\FR02A086.DGN, \\RW02A086.DGN, \\MT02A086.DGN, \\AL02A087.DGN, \\FR02A087.DGN, \\RW02A087.DGN, \\MT02A087.DGN, \\AL02A088.DGN, \\FR02A088.DGN, \\RW02A088.DGN, \\MT02A088.DGN, \\AL02A089.DGN, \\FR02A089.DGN, \\RW02A089.DGN, \\MT02A089.DGN, \\AL02A090.DGN, \\FR02A090.DGN, \\RW02A090.DGN, \\MT02A090.DGN, \\AL02A091.DGN, \\FR02A091.DGN, \\RW02A091.DGN, \\MT02A091.DGN, \\AL02A092.DGN, \\FR02A092.DGN, \\RW02A092.DGN, \\MT02A092.DGN, \\AL02A093.DGN, \\FR02A093.DGN, \\RW02A093.DGN, \\MT02A093.DGN, \\AL02A094.DGN, \\FR02A094.DGN, \\RW02A094.DGN, \\MT02A094.DGN, \\AL02A095.DGN, \\FR02A095.DGN, \\RW02A095.DGN, \\MT02A095.DGN, \\AL02A096.DGN, \\FR02A096.DGN, \\RW02A096.DGN, \\MT02A096.DGN, \\AL02A097.DGN, \\FR02A097.DGN, \\RW02A097.DGN, \\MT02A097.DGN, \\AL02A098.DGN, \\FR02A098.DGN, \\RW02A098.DGN, \\MT02A098.DGN, \\AL02A099.DGN, \\FR02A099.DGN, \\RW02A099.DGN, \\MT02A099.DGN, \\AL02A100.DGN, \\FR02A100.DGN, \\RW02A100.DGN, \\MT02A100.DGN