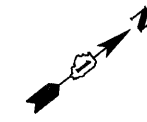
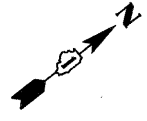
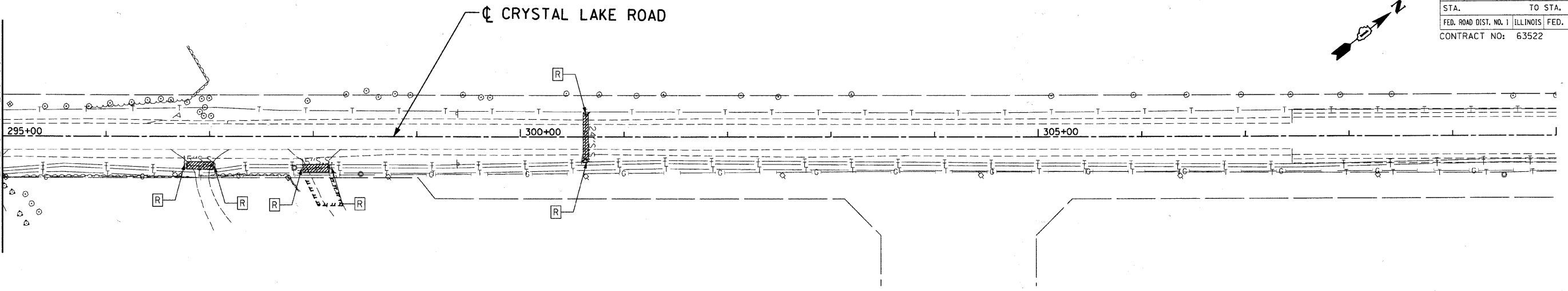


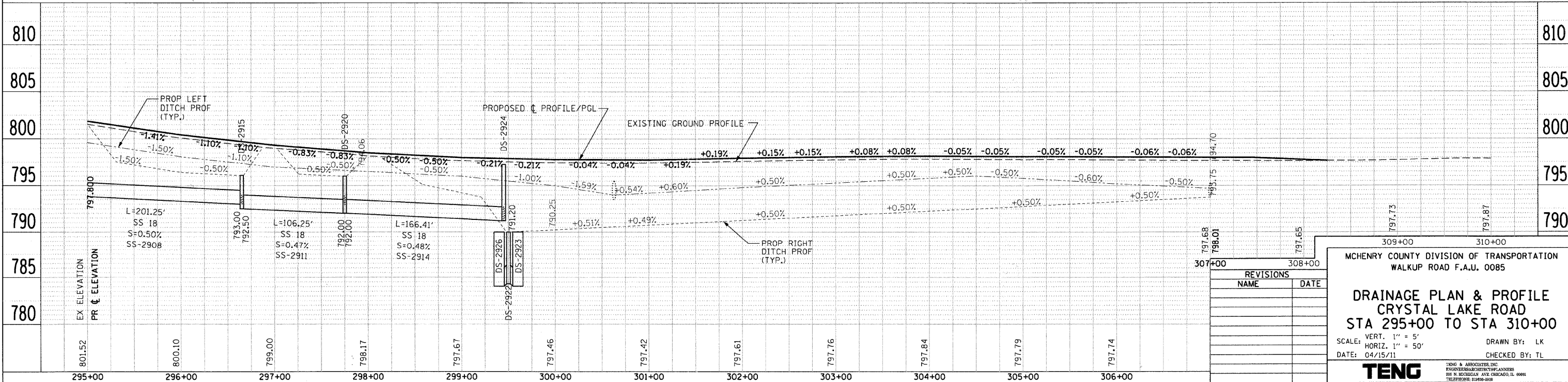
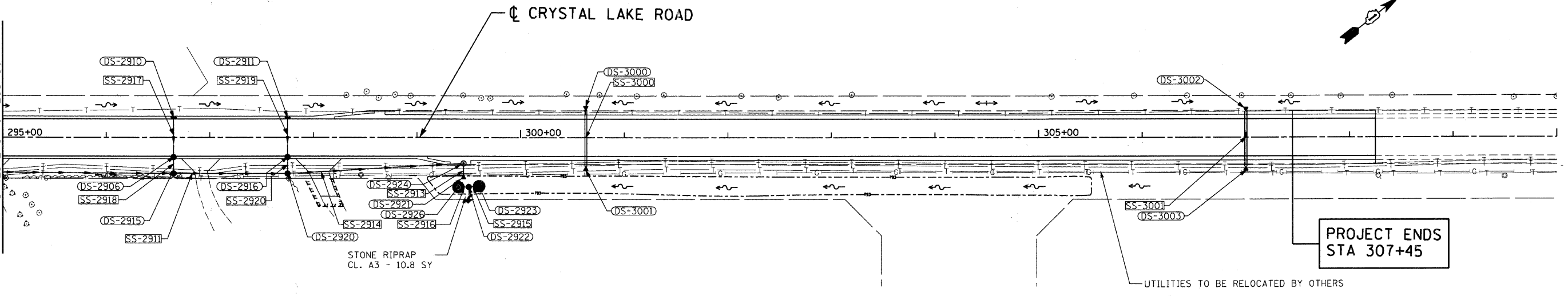
F.A.U. RTE.	SECTION	COUNTY	TOTAL SHEETS	SHEET NO.
0085	00-00246-02-FP	MCHENRY	292	104
STA.		TO STA.		
FED. ROAD DIST. NO. 1		ILLINOIS FED. AID PROJECT		
CONTRACT NO: 63522				



EXISTING PLAN  
MATCH LINE STA. 295+00



PROPOSED PLAN  
MATCH LINE STA. 295+00



REVISIONS	
NAME	DATE

MCHENRY COUNTY DIVISION OF TRANSPORTATION  
WALKUP ROAD F.A.U. 0085

**DRAINAGE PLAN & PROFILE  
CRYSTAL LAKE ROAD  
STA 295+00 TO STA 310+00**

SCALE: VERT. 1" = 5'  
HORIZ. 1" = 50'

DATE: 04/15/11

DRAWN BY: LK  
CHECKED BY: TL

**TENG**

TENG & ASSOCIATES, INC.  
ENGINEERS ARCHITECTS PLANNERS  
205 N. MICHIGAN AVE. CHICAGO, IL 60601  
TELEPHONE: 312-466-9000

PLAN	DATE
NO.	BY
NO.	DATE
NO.	DATE
NO.	DATE
NO.	DATE
NO.	DATE
NO.	DATE
NO.	DATE
NO.	DATE

PROFILE	DATE
NO.	BY
NO.	DATE
NO.	DATE
NO.	DATE
NO.	DATE
NO.	DATE
NO.	DATE
NO.	DATE
NO.	DATE

\AL02A002.DGN, \P02A002.DGN, \R02A002.DGN, \S02A002.DGN, \T02A002.DGN, \V02A002.DGN, \X02A002.DGN, \Y02A002.DGN, \Z02A002.DGN, \03A002.DGN, \04A002.DGN, \05A002.DGN, \06A002.DGN, \07A002.DGN, \08A002.DGN, \09A002.DGN, \10A002.DGN, \11A002.DGN, \12A002.DGN, \13A002.DGN, \14A002.DGN, \15A002.DGN, \16A002.DGN, \17A002.DGN, \18A002.DGN, \19A002.DGN, \20A002.DGN, \21A002.DGN, \22A002.DGN, \23A002.DGN, \24A002.DGN, \25A002.DGN, \26A002.DGN, \27A002.DGN, \28A002.DGN, \29A002.DGN, \30A002.DGN, \31A002.DGN, \32A002.DGN, \33A002.DGN, \34A002.DGN, \35A002.DGN, \36A002.DGN, \37A002.DGN, \38A002.DGN, \39A002.DGN, \40A002.DGN, \41A002.DGN, \42A002.DGN, \43A002.DGN, \44A002.DGN, \45A002.DGN, \46A002.DGN, \47A002.DGN, \48A002.DGN, \49A002.DGN, \50A002.DGN, \51A002.DGN, \52A002.DGN, \53A002.DGN, \54A002.DGN, \55A002.DGN, \56A002.DGN, \57A002.DGN, \58A002.DGN, \59A002.DGN, \60A002.DGN, \61A002.DGN, \62A002.DGN, \63A002.DGN, \64A002.DGN, \65A002.DGN, \66A002.DGN, \67A002.DGN, \68A002.DGN, \69A002.DGN, \70A002.DGN, \71A002.DGN, \72A002.DGN, \73A002.DGN, \74A002.DGN, \75A002.DGN, \76A002.DGN, \77A002.DGN, \78A002.DGN, \79A002.DGN, \80A002.DGN, \81A002.DGN, \82A002.DGN, \83A002.DGN, \84A002.DGN, \85A002.DGN, \86A002.DGN, \87A002.DGN, \88A002.DGN, \89A002.DGN, \90A002.DGN, \91A002.DGN, \92A002.DGN, \93A002.DGN, \94A002.DGN, \95A002.DGN, \96A002.DGN, \97A002.DGN, \98A002.DGN, \99A002.DGN, \00A002.DGN