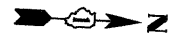
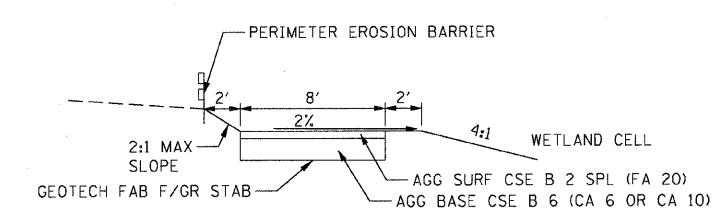
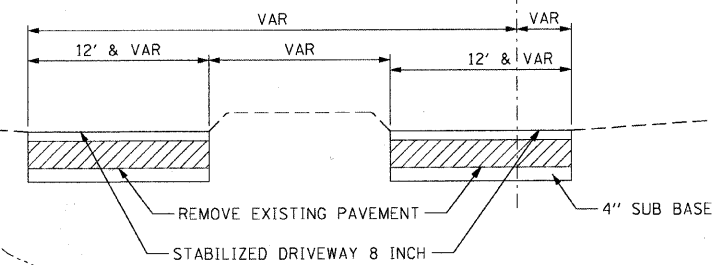
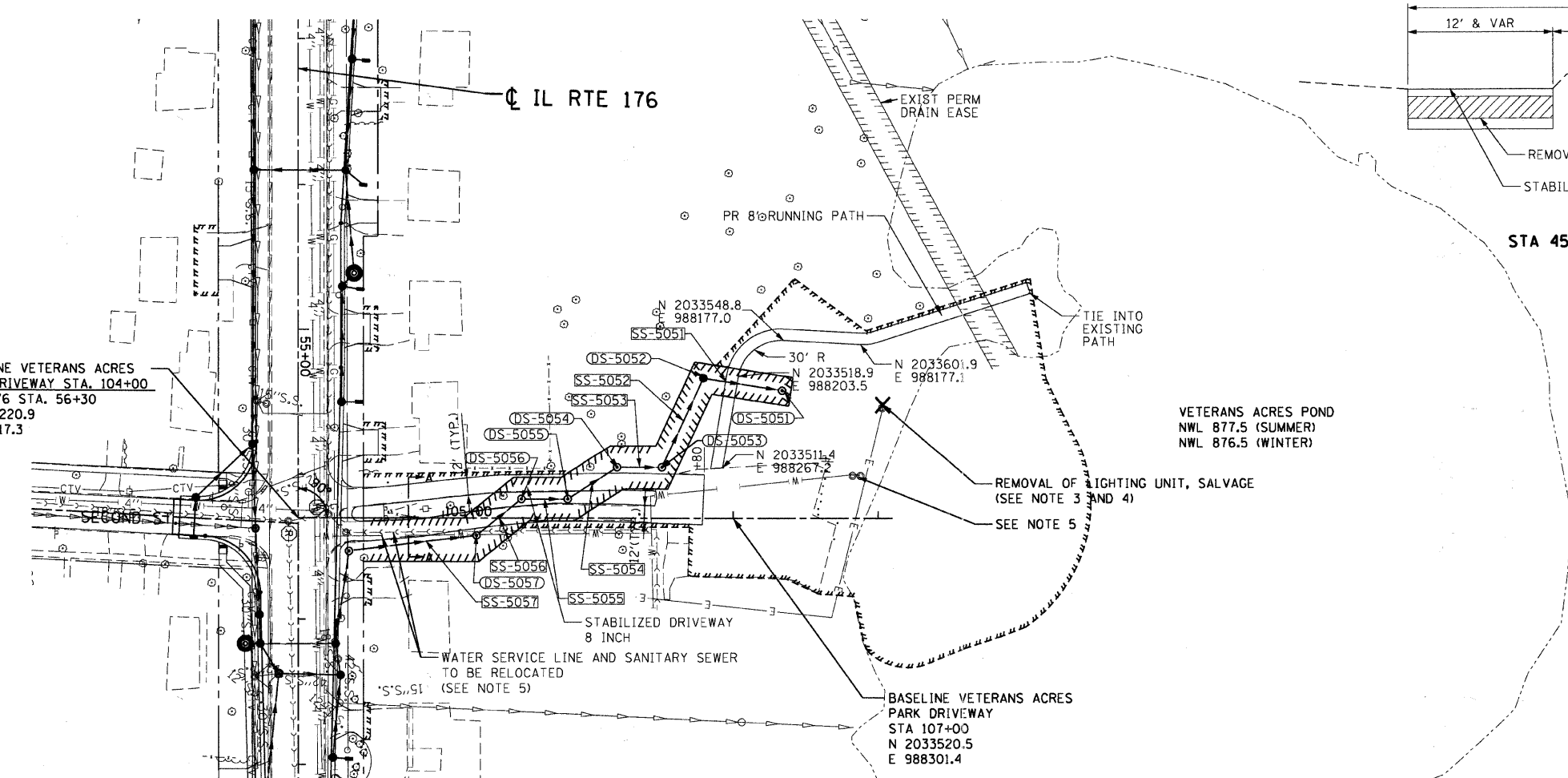


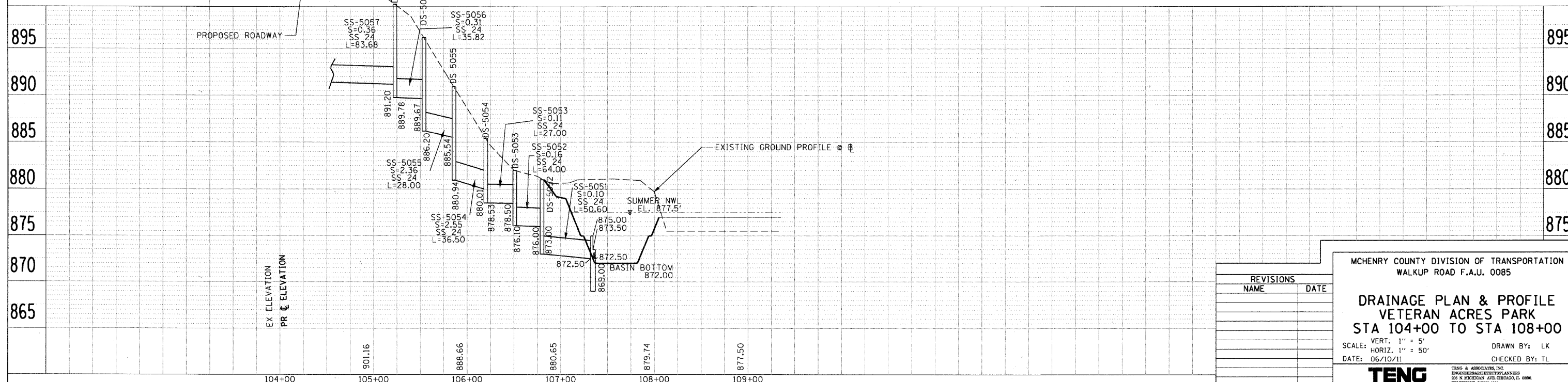
F.A.U. RTE.	SECTION	COUNTY	TOTAL SHEETS	SHEET NO.
0085	00-00246-02-FP	MCHENRY	292	106
STA. TO STA.		FED. ROAD DIST. NO. 1 ILLINOIS FED. AID PROJECT		
CONTRACT NO: 63522				



DATE: _____ BY: _____
 SURVEYED: _____ CHECKED: _____
 PLAN: _____ NO. _____
 NOTE BOOK: _____
 NO. _____
 DATE: _____ BY: _____
 SURVEYED: _____ CHECKED: _____
 PROFILE: _____ NO. _____
 NOTE BOOK: _____
 NO. _____



- NOTES:
- EXISTING UTILITIES ARE APPROXIMATE AND MUST BE VERIFIED IN THE FIELD.
 - EXCAVATION FOR THE RUNNING PATH AND WETLAND CELL TO BE PAID FOR AS CHANNEL EXCAVATION (SPECIAL) AND TO BE USED AS FILL FOR THE NORTHERN POND.
 - DELIVER LIGHT POLE TO CLPD STORAGE FACILITY AT 877 W RTE 176
 - EXISTING ELECTRIC CIRCUIT SHALL BE DISCONNECTED AT REMAINING LIGHTING UNIT PROVIDING POWER FEED TO THIS LIGHTING UNIT. EXISTING ELECTRICAL CABLE BETWEEN REMAINING LIGHTING UNIT AND LIGHTING UNIT TO BE REMOVED. THIS WORK SHALL BE INCLUDED IN THE CONTRACT UNIT PRICE FOR REMOVAL OF LIGHTING UNIT, SALVAGE.
 - RELOCATION OF EXISTING VETERAN ACRES PARK WATER SERVICE LINE AND SANITARY SEWER IN CONFLICT WITH THE PROPOSED CONSTRUCTION WILL BE PAID FOR ACCORDING TO ARTICLE 109.04 OF THE STANDARD SPECIFICATIONS.



MCHENRY COUNTY DIVISION OF TRANSPORTATION
 WALKUP ROAD F.A.U. 0085

DRAINAGE PLAN & PROFILE
VETERAN ACRES PARK
STA 104+00 TO STA 108+00

VERT. 1" = 5'
 HORIZ. 1" = 50'
 DATE: 06/10/11

DRAWN BY: LK
 CHECKED BY: TL

TENG

TENG & ASSOCIATES, INC.
 ENGINEERS/ARCHITECTS/PLANNERS
 865 N MICHIGAN AVE. CHICAGO, IL 60610
 TELEPHONE: 312.467.4000