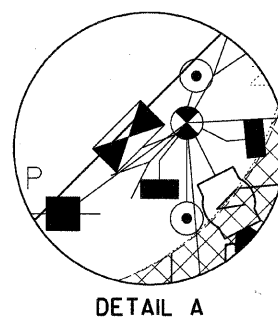
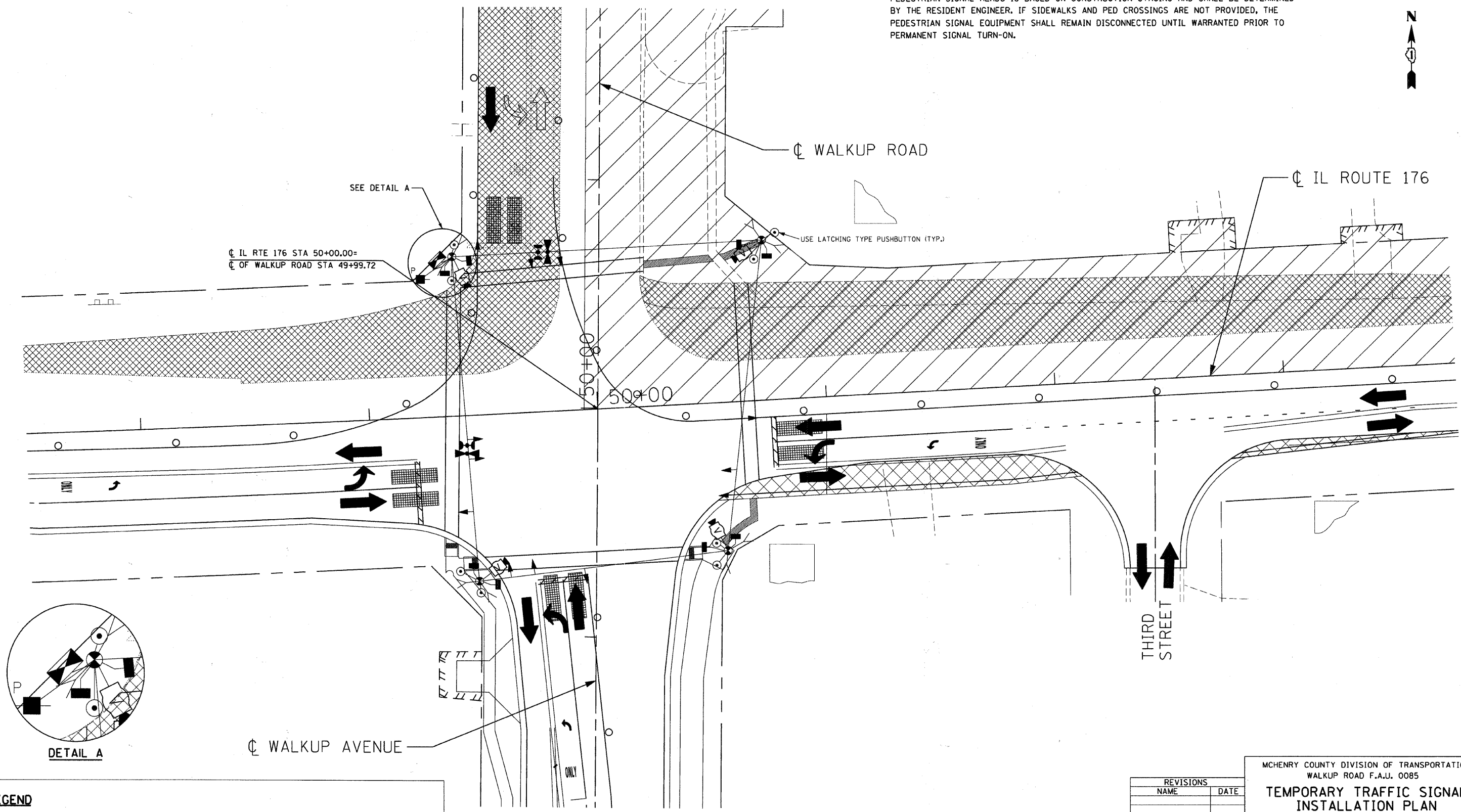


F.A.U. RTE.	SECTION	COUNTY	TOTAL SHEETS	SHEET NO.
0085	00-00246-02-FP	MCHENRY	292	180
STA.	TO STA.			
FED. ROAD DIST. NO. 1	ILLINOIS	FED. AID PROJECT		
CONTRACT NO:		63522		

NOTES:
 1. ALL PEDESTRIAN SIGNAL HEADS SHALL BE BAGGED AND DISCONNECTED AT LOCATIONS WHERE EXISTING PAVEMENT IS REMOVED. ALL PEDESTRIAN SIGNAL HEADS SHALL REMAIN BAGGED UNTIL THE PAVEMENT IS RESTORED TO PROVIDE A SAFE CROSSING AREA. USAGE OF PEDESTRIAN SIGNAL HEADS IS BASED ON CONSTRUCTION STAGING AND SHALL BE DETERMINED BY THE RESIDENT ENGINEER. IF SIDEWALKS AND PED CROSSINGS ARE NOT PROVIDED, THE PEDESTRIAN SIGNAL EQUIPMENT SHALL REMAIN DISCONNECTED UNTIL WARRANTED PRIOR TO PERMANENT SIGNAL TURN-ON.



DETAIL A

LEGEND

- TEMPORARY SIDEWALK (3' WIDTH)
- TEMPORARY PAVEMENT
- TEMPORARY PAVEMENT FROM PREVIOUS STAGE
- PREVIOUS TRAFFIC PATTERN
- PR TRAFFIC PATTERN

REVISIONS	
NAME	DATE

MCHENRY COUNTY DIVISION OF TRANSPORTATION
 WALKUP ROAD F.A.U. 0085
**TEMPORARY TRAFFIC SIGNAL
 INSTALLATION PLAN
 STAGE 2**
 IL ROUTE 176 & WALKUP ROAD
 SCALE: 1" = 20'
 DATE: 06/10/11
 DRAWN BY: SNB
 CHECKED BY: RRM
TENG
TENG & ASSOCIATES, INC.
 ENGINEERS/ARCHITECTS/PLANNERS
 995 N. MICHIGAN AVE. CHICAGO, IL 60606
 TELEPHONE: 312.664.6000

\\AL02\A002.DGN, \\TPO2\A002.DGN, \\M1\02\A002.DGN, \\AL02\A002.DGN, \\NB9\BIA001.DGN, \\AL02\A002.DGN, \\M1\02\A002.DGN, \\RWD\02\A002.DGN, \\TPO2\A002.DGN
 6-24-2011 9:39:30 AM
 \\S-0046\ANYS\VAL\10-TRANS\02\2202-300-03\CIVIL\CAAD\02-CONTRACT\VA_TEN\10-22\02\A002.DGN
 12 13 14 15 16 17 18 19 20 21 22 23 24 25 26 27 28 29 30 31 32 33 34 35 36 37 38 39 40 41 42 43 44 45 46 47 48 49 50 51 52 53 54 55 56 57 58 59 60 61 62 63