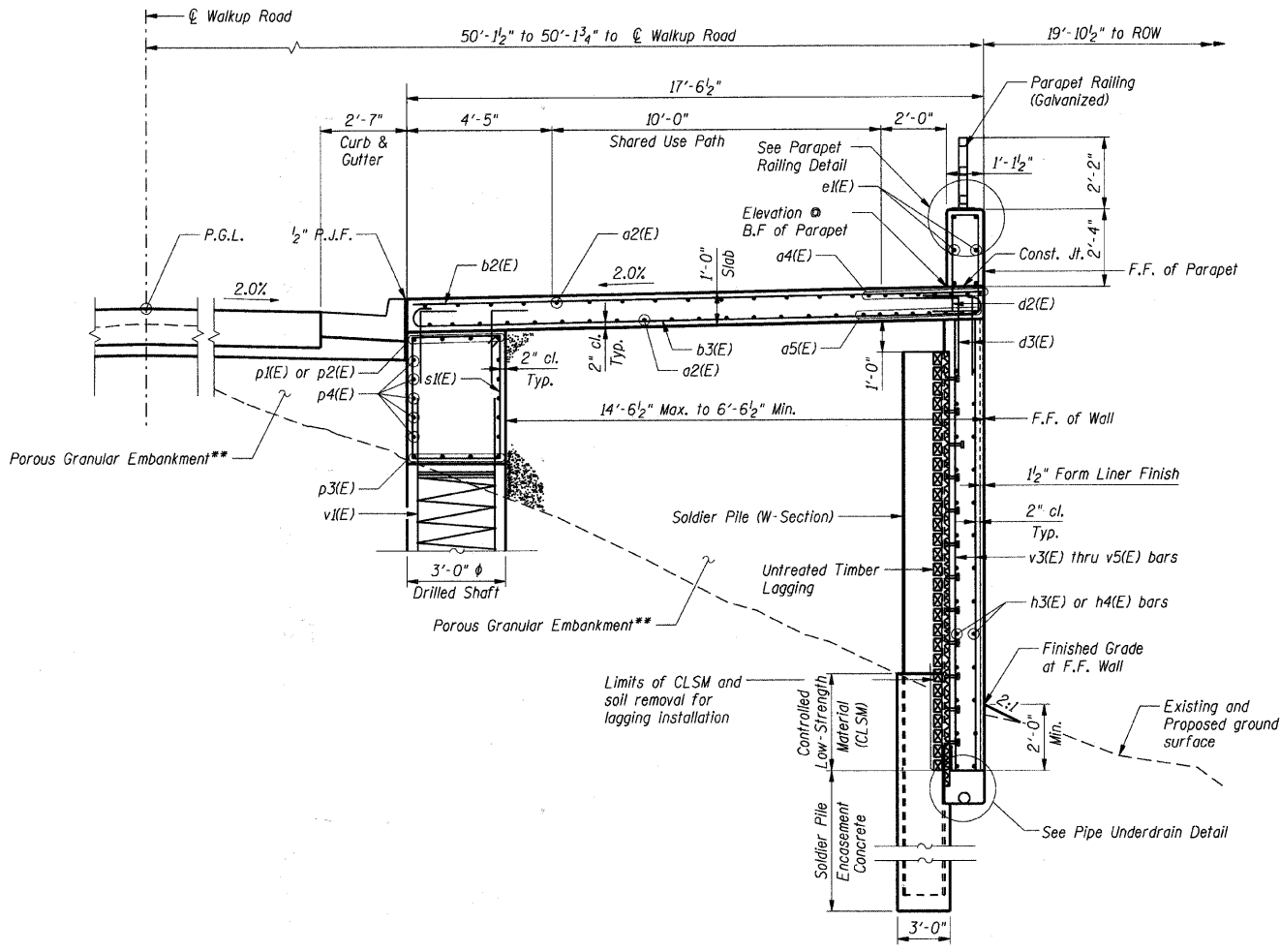
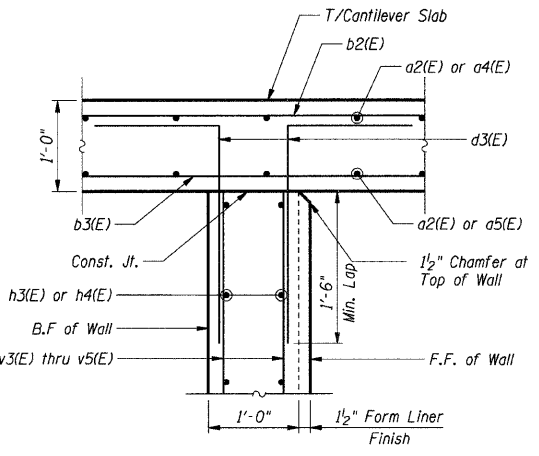


**SECTION A-A**  
Sta. 55+31.60 to Sta. 56+05.62



**SECTION B-B**  
Sta. 55+31.60 to Sta. 56+05.62



**DETAIL 1**

\*\* Porous Granular Embankment and Embankment to be placed and compacted prior to construction of concrete facing.

\* Cost of Existing Concrete Block Wall to be removed is included with Earth Excavation

Limits of CLSM and soil removal for lagging installation

- Notes:**
1. Work this sheet with sheets SB-1 thru SB-14.
  2. F.F. denotes Front Face of wall  
B.F. denotes Back Face of wall

**SHT. SB-9**

REVISIONS	
NAME	DATE

MCHENRY COUNTY DIVISION OF TRANSPORTATION  
WALKUP ROAD F.A.U. 0085  
SECTION 00-00246-02-FP  
STATION 54+85.02 TO 59+49.91  
VETERAN ACRES PARK RETAINING WALL

**CANTILEVERED SLAB SECTIONS**

SCALE: N.T.S. DRAWN BY: CPB  
DATE: 04/15/11 CHECKED BY: TCC

**TENG**  
TENG & ASSOCIATES, INC.  
ENGINEERS/ARCHITECTS/PLANNERS  
816 N. WICKLIFF AVE. CHICAGO, IL 60614  
TELEPHONE: 312-644-0000

A:\BDS\1002\1002.DWG...NRS05\VALIGHT  
 4-15-2011 10:56:54  
 \S:\0044\MA\VALU.L.D.-FRANS.07\2202\300-03\STRUCT\CAD\02 CONTRACT\VA VETERAN ACRES PARK WALL\SHEET\SB9\SB9.DWG