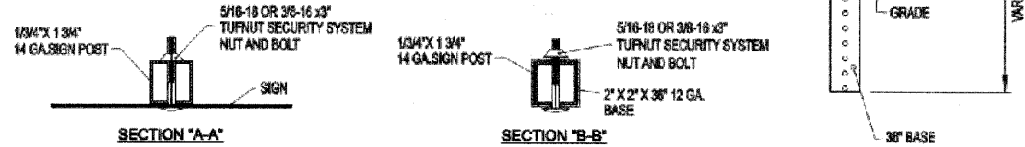


F.A.U. RTE.	SECTION	COUNTY	TOTAL SHEETS	SHEET NO.
0085	00-00246-02-FP	MCHENRY	292	230
STA.		TO STA.		
FED. ROAD DIST. NO. 1		ILLINOIS FED. AID PROJECT		
CONTRACT NO: 63522				

SPECIFICATIONS

- ALL TRAFFIC CONTROL SIGNS AND POSTS SHALL BE INSTALLED PRIOR TO OCCUPANCY AND SHALL BE INSTALLED ACCORDING TO THE LATEST EDITION OF THE MANUAL ON UNIFORM TRAFFIC CONTROL DEVICES (MUTCD), IDOT STANDARD SPECIFICATIONS FOR ROAD AND BRIDGE CONSTRUCTION SECTION 728 (LATEST EDITION), AND IDOT POLICY ON ESTABLISHING AND POSTING SPEED LIMITS ON THE STATE HIGHWAY SYSTEM, MAY 2002 EDITION (SPEED LIMIT SIGNS SPACING, PAGE 5).
- POSTS SHALL BE TELESCOPING SIGNS POSTS, 14 GAUGE 1 3/4" x 1 3/4" x 10' (OR 11' OR 12') WITH A 12 GAUGE 2" x 2" x 36" BASE. TELESCOPING SIGN SUPPORTS SHALL CONFORM TO SECTION 728 OF THE IDOT STANDARD SPECIFICATIONS FOR ROAD AND BRIDGE CONSTRUCTION (LATEST EDITION).
- MOUNTING HOLES SHALL BE 1/4" IN DIAMETER +/- 1/64" AND WILL BE SPACED 1" ON CENTER ON ALL SIDES FOR THE ENTIRE LENGTH OF THE POSTS. HOLES SHALL BE ON THE CENTERLINE OF EACH SIDE IN TRUE ALIGNMENT AND OPPOSITE EACH OTHER TO ACCEPT A 3/8" BOLT THROUGH THE POST AT ANY LOCATION. THE POST SHALL HAVE A SMOOTH GALVANIZED FINISH APPLIED EITHER BEFORE OR AFTER FORMING.
- ALL SIGN PANELS SHALL BE IDOT STANDARD 0.080" ALUMINUM BLANKS WITH 1/2" RADIUS ON ALL CORNERS. SIGN FACE MATERIAL SHALL BE 3M DG3 REFLECTORIZED SHEETING (ASTM PROPOSED TYPE 11, ILLINOIS TYPE Z2).
 - STANDARD STOP SIGN (R1-1), YIELD SIGN (R1-2), AND DO NOT ENTER (R5-1) SHALL BE 30" x 30"
 - STANDARD WARNING SIGNS SHALL BE 30" x 30"
 - NO PARKING SIGNS SHALL BE 12" x 18" (R7-2a)
 - SCHOOL ZONE AND PEDESTRIAN CROSSING SIGNS SHALL BE 30" x 30" WITH SUPPLEMENTAL PLATES 24" x 12"
 - SPEED LIMIT SIGNS SHALL BE 24" x 30" (R2-1)
 - SPEED LIMIT SIGNS FOR 30-MPH OR LESS IN URBAN AREAS SHALL BE SPACED 600 FEET TO 1,320 FEET (2-4 BLOCKS). REFER TO IDOT POLICY ON ESTABLISHING AND POSTING SPEED LIMITS ON THE STATE HIGHWAY SYSTEM, MAY 2002 EDITION (SPEED LIMIT SIGNS SPACING, PAGE 5).



Approved: City Engineer

Drawing Name

Drawing Number

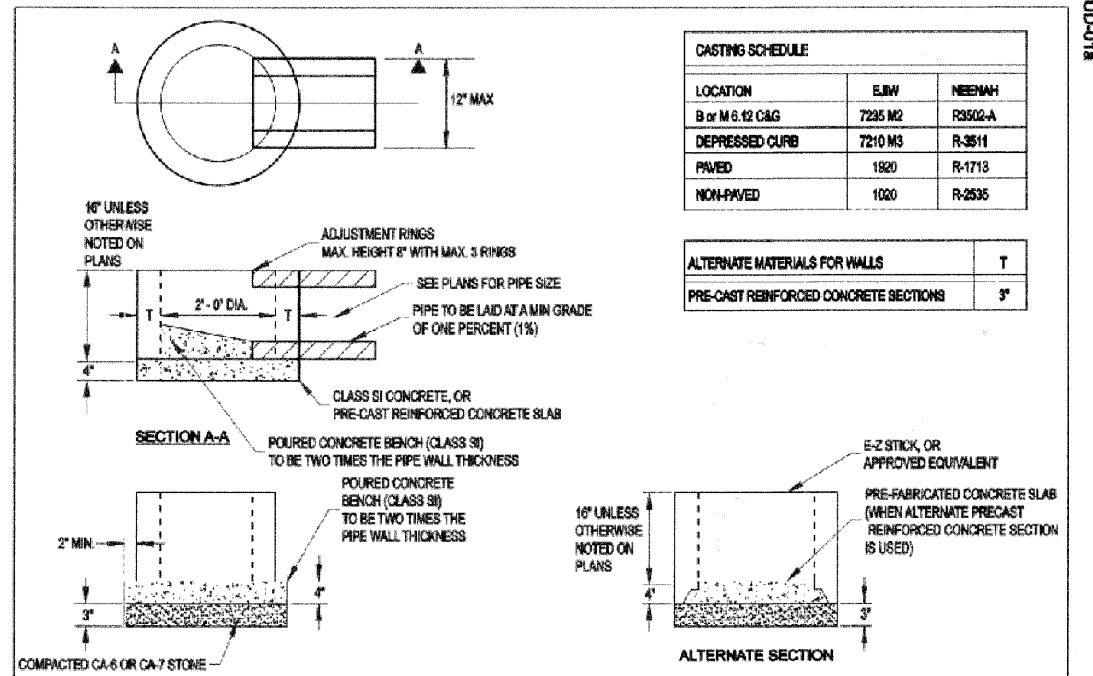
Victor C. Ramirez, P.E.
Victor C. Ramirez, P.E.
Director of Engineering and Building

TRAFFIC CONTROL SIGN AND POST

TR-03

Date: 4/15/2007

Drawn EM Checked TR



Approved: City Engineer

Drawing Name

Drawing Number

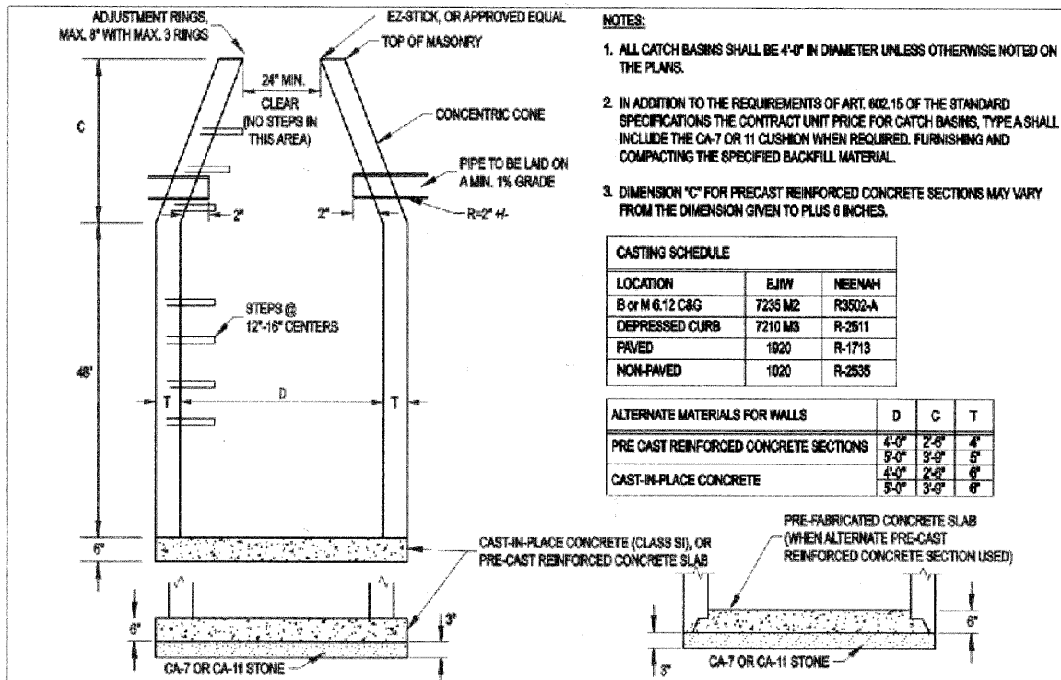
Victor C. Ramirez, P.E.
Victor C. Ramirez, P.E.
Director of Engineering and Building

DRAINAGE STRUCTURES: INLET, TYPE A

UD-01a

Date: 4/15/2007

Drawn EM Checked LZ



Approved: City Engineer

Drawing Name

Drawing Number

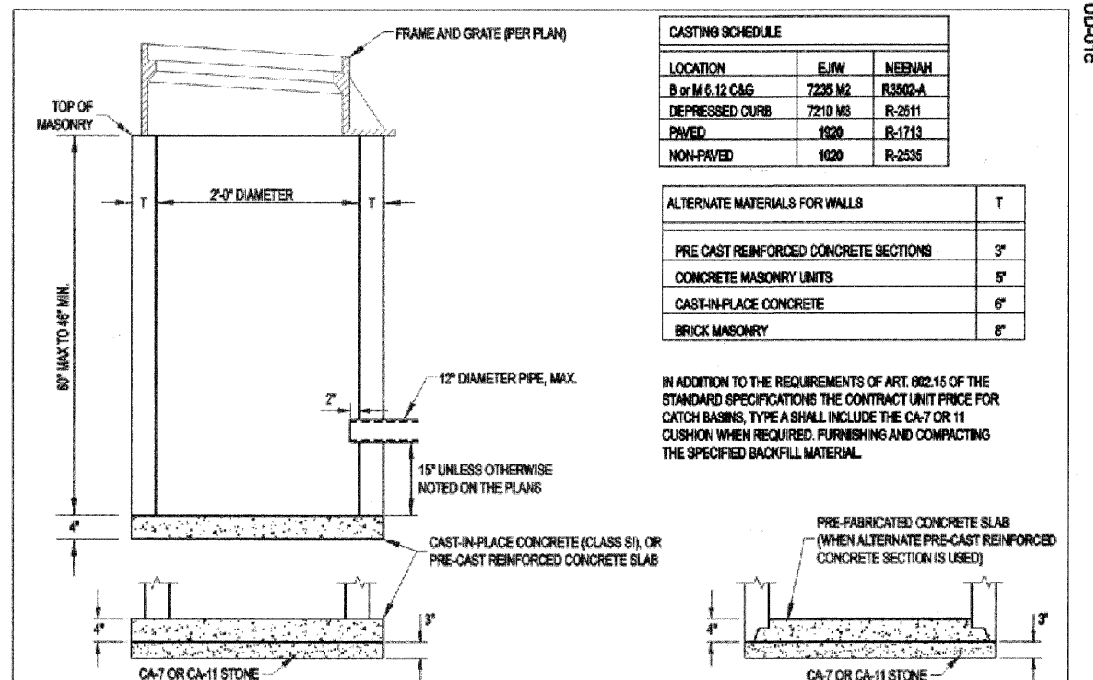
Victor C. Ramirez, P.E.
Victor C. Ramirez, P.E.
Director of Engineering and Building

CATCH BASIN, TYPE A

UD-01b

Date: 4/15/2007

Drawn EM Checked LZ



Approved: City Engineer

Drawing Name

Drawing Number

Victor C. Ramirez, P.E.
Victor C. Ramirez, P.E.
Director of Engineering and Building

CATCH BASIN, TYPE C

UD-01c

Date: 4/15/2007

Drawn EM Checked SC

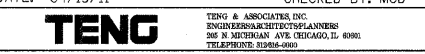


REVISIONS	
NAME	DATE

MCHENRY COUNTY DIVISION OF TRANSPORTATION
WALKUP ROAD F.A.U. 0085

CITY OF CRYSTAL LAKE DETAILS SHEET 3 OF 8

SCALE: N.T.S. DRAWN BY: MZD
DATE: 04/15/11 CHECKED BY: MCD



I:\Projects\04-04\04-001\04-001-03\CIVIL\CAD\02 CONTRACT\TENS\SHEET\002A033.SHT
 STAMPER
 4-15-2007 10:50:20
 1 2 3 4 5 6 7 8 9 10 11 12 13 14 15 16 17 18 19 20 21 22 23 24 25 26 27 28 29 30 31 32 33 34 35 36 37 38 39 40 41 42 43 44 45 46 47 48 49 50 51 52 53 54 55 56 57 58 59 60 61 62 63